

Iron Body (ASTM A 126, CLASS B)

| | |
|--------------------------------------|---|
| Style B 250# Threaded ¼” – 4” | 2 |
| Technical Data | 3 |
| Style B7 250# Threaded ¼” – 3” | 4 |
| Technical Data | 5 |
| Style A-7 125# Flange 2” – 24” | 6 |
| Technical Data | 7 |
| Style A 250# Flange 2” – 16” | 8 |
| Technical Data | 9 |

Ductile Iron Body (ASTM A 536, GRADE 65-45-12)

| | |
|---------------------------------------|----|
| Style BDI 300# Threaded ½” – 2” | 10 |
| Technical Data | 11 |

Bronze Body (ASTM B 584, C84400)

| | |
|---|----|
| Style F-150 125# Threaded ¼” – 3” | 12 |
| Style E-150 125# Solder Joint ¼” – 3” | 12 |
| Technical Data | 13 |

Lead Free Bronze Body (ASTM B 584, C89833)

| | |
|--|----|
| Style F7 125# Threaded ¼” – 3” | 14 |
| Style E7 125# Solder Joint ¼” – 3” | 14 |
| Technical Data | 15 |

Bronze Body (ASTM B 62, C83600)

| | |
|---|----|
| Style F-300 250# Threaded ¼” – 3” | 16 |
| Style E-300 250# Solder Joint ¼” – 3” | 16 |
| Technical Data | 17 |
| Style BA 150# Flange 2” – 6” | 18 |
| Style BA 300# Flange 2” – 6” | 18 |
| Technical Data | 19 |

Nickel Aluminum Bronze Body (ASTM B 148, C95800)

| | |
|---------------------------------------|----|
| Style BA-7 150# Flange ½” – 12” | 20 |
| Style BA-7 300# Flange ½” – 12” | 20 |
| Technical Data | 21 |

Carbon Steel Body (ASTM A 216, GRADE WCB)

| | |
|---|----|
| Style SB-7 600# Threaded ¼” – 3” | 22 |
| Style SB-7 600# Socket Weld ¼” – 3” | 22 |
| Technical Data | 23 |
| Style SB-7BC 600# Threaded ¼” – 3” | 24 |
| Style SB-7BC 600# Socket Weld ¼” – 3” | 24 |
| Technical Data | 25 |

Carbon Steel Body (Cont.) (ASTM A 216, GRADE WCB)

| | |
|--|----|
| Style SB 1500# Threaded ½” – 3” | 26 |
| Style SB 1500# Socket Weld ½” – 3” | 26 |
| Technical Data | 27 |
| Style SA-7 150# Flange ½” – 14” | 28 |
| Style SA-7 300# Flange ½” – 14” | 28 |
| Technical Data | 29 |
| Style SA 600# Flange ½” – 12” | 30 |
| Technical Data | 31 |
| Style SA-7 150# Butt Weld ½” – 12” | 32 |
| Style SA-7 300# Butt Weld ½” – 12” | 32 |
| Technical Data | 33 |

| | |
|--|----|
| Style SA 600# Butt Weld ½” – 12” | 34 |
| Technical Data | 35 |

316 Stainless Steel Body (ASTM A 351, GRADE CF8M)

| | |
|--|----|
| Style SSB-7 600# Threaded ¼” – 3” | 36 |
| Style SSB-7 600# Socket Weld ¼” – 3” | 36 |
| Technical Data | 37 |
| Style SSB-7BC 600# Threaded ¼” – 3” | 38 |
| Style SSB-7BC 600# Socket Weld ¼” – 3” | 38 |
| Technical Data | 39 |
| Style SSB 1500# Threaded ½” – 3” | 40 |
| Style SSB 1500# Socket Weld ½” – 3” | 40 |
| Technical Data | 41 |

| | |
|--|----|
| Style SSA-7 150# Flange ½” – 14” | 42 |
| Style SSA-7 300# Flange ½” – 14” | 42 |
| Technical Data | 43 |

| | |
|--------------------------------------|----|
| Style SSA 600# Flange ½” – 12” | 44 |
| Technical Data | 45 |

| | |
|---|----|
| Style SSA-7 150# Butt Weld ½” – 12” | 46 |
| Style SSA-7 300# Butt Weld ½” – 12” | 46 |
| Technical Data | 47 |

| | |
|---|----|
| Style SSA 600# Butt Weld ½” – 12” | 48 |
| Technical Data | 49 |

Pressure Drop Charts

| | |
|------------------------------|----|
| Threaded “Y” Strainers | 50 |
| Flanged “Y” Strainers | 51 |
| Style B7 | 52 |

Style B

Y-Strainer

Cast Iron (ASTM A 126, Class B)

250 lb. Threaded



Cast Iron Y-Strainer

APPLICATIONS

Steam, water, oil or gas where protection from foreign matter in a pipeline is required.

CONSTRUCTION

The Keckley Style B strainers are constructed from rugged cast iron castings that are machined to exacting specifications.

FEATURES

The Keckley Style B features a tapered bushing in sizes 1/4" thru 2" and bolted cover with gasket for sizes 2-1/2", 3" and 4". All Keckley Style B strainers are furnished standard with a NPT blow-off connection and can be supplied with a cast iron blow-off plug upon request.

SCREENS

Standard screens are 20 mesh 304 stainless steel through size 2". Sizes 2-1/2", 3" and 4" are furnished with 1/16" perforated 304 stainless steel screens. All screens are spot welded for maximum strength. Different size perforations and meshes are available in stainless steel, monel, and brass to meet specific media requirements. If media is not indicated, screens for *water* will be supplied.

SELF CLEANING

Self cleaning is accomplished by opening the valve or drain plug connected to the blow-off port. **Warning:** See Maintenance Instructions on page **S6** of the Strainer Information Section for additional precautions and detailed information on servicing the strainer.

WORKING PRESSURES - NON SHOCK

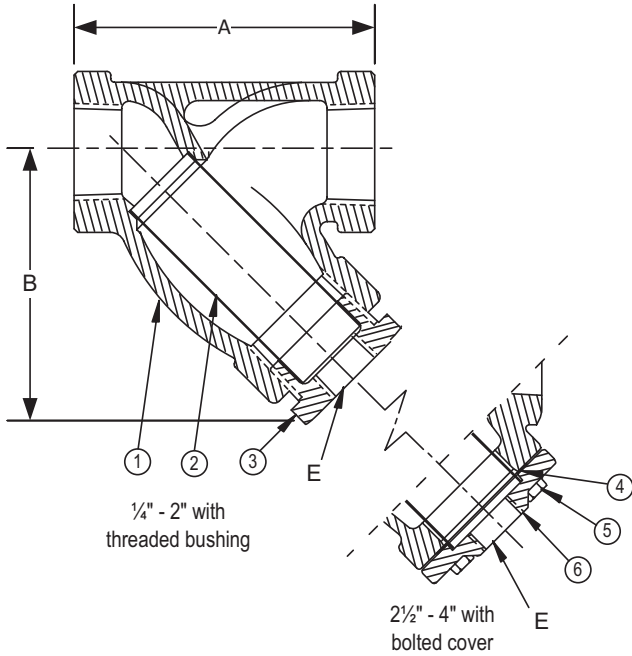
| NOM. RATING | MEDIA | 1/4" to 4" | 8 mm to 100 mm |
|-----------------|--------|-----------------|------------------|
| 250# (Threaded) | STEAM | 250 PSI @ 406°F | 1724 KPa @ 208°C |
| | W.O.G. | 400 PSI @ 150°F | 2759 KPa @ 66°C |

GOVERNMENT/MILITARY SPECIFICATIONS

Style B cast iron threaded strainers meet or exceed government specification WW-S-2739 (Supersedes MIL-S-16293).

Style B

Y-Strainer, 250 lb. Threaded
Cast Iron (ASTM A 126, Class B)



PARTS LIST

| ITEM | DESCRIPTION | MATERIAL |
|------|-------------|---------------------------------|
| 1 | Body | Cast Iron (ASTM A 126, Class B) |
| 2 | Screen | Stainless Steel (304) |
| 3 | Bushing | Malleable Iron |
| 4 | Gasket* | Composition |
| 5 | Cap Screw* | Steel |
| 6 | Cover* | Cast Iron (ASTM A 126, Class B) |

Optional: Blow-off Plug, Malleable Iron

*2 1/2", 3" & 4" only.

STANDARD SCREENS SUPPLIED

| SIZE | | SCREEN PERFORATION | | | |
|----------|---------|-------------------------|----|-----------|-------------|
| | | FOR STEAM | | OPEN AREA | FOR LIQ-UID |
| in | mm | in | mm | in | mm |
| 1/4 to 2 | 8 to 50 | 20 MESH STAINLESS STEEL | | | 49% |

Standard screens supplied are for **liquid service**, unless otherwise specified.
Options: Other meshes, perforations, and screen materials are available.

| SIZE | | DIMENSIONS | | | | | | WEIGHTS | |
|-------|-----|------------|-----|--------|-----|-------|----|---------|------|
| | | A | | B | | E | | | |
| in | mm | in | mm | in | mm | in | mm | lbs | kgs |
| 1/4 | 8 | 3 | 76 | 2-5/8 | 67 | 3/8 | 10 | 2 | 0.9 |
| 3/8 | 10 | 3 | 76 | 2-5/8 | 67 | 3/8 | 10 | 2 | 0.9 |
| 1/2 | 15 | 3 | 76 | 2-5/8 | 67 | 3/8 | 10 | 2 | 0.9 |
| 3/4 | 20 | 4 | 102 | 3-5/8 | 92 | 1/2 | 15 | 3 | 1.4 |
| 1 | 25 | 4-7/8 | 124 | 4-1/2 | 114 | 3/4 | 20 | 4.5 | 2.0 |
| 1-1/4 | 32 | 5-1/8 | 130 | 4-3/4 | 121 | 3/4 | 20 | 6 | 2.7 |
| 1-1/2 | 40 | 5-3/4 | 146 | 4-7/8 | 124 | 1 | 25 | 8 | 3.6 |
| 2 | 50 | 7-1/4 | 184 | 5-3/4 | 146 | 1-1/4 | 32 | 15.5 | 7.0 |
| 2-1/2 | 65 | 8-7/8 | 225 | 7-1/2 | 191 | 1-1/4 | 32 | 25 | 11.3 |
| 3 | 80 | 10 | 254 | 8 | 203 | 1-1/2 | 40 | 36 | 16.3 |
| 4 | 100 | 15-1/4 | 387 | 12-1/2 | 318 | 2 | 50 | 95 | 43.1 |

Certified dimensional drawings are available upon request.

†This table reflects only the nearest metric equivalents.

FLOW COEFFICIENTS

| Size | C _v | Size | C _v | Size | C _v |
|------|----------------|--------|----------------|--------|----------------|
| 1/2" | 9.5 | 1-1/4" | 44.9 | 2-1/2" | 129.7 |
| 3/4" | 18.7 | 1-1/2" | 61 | 3" | 161.3 |
| 1" | 30 | 2" | 98 | 4" | 256.2 |

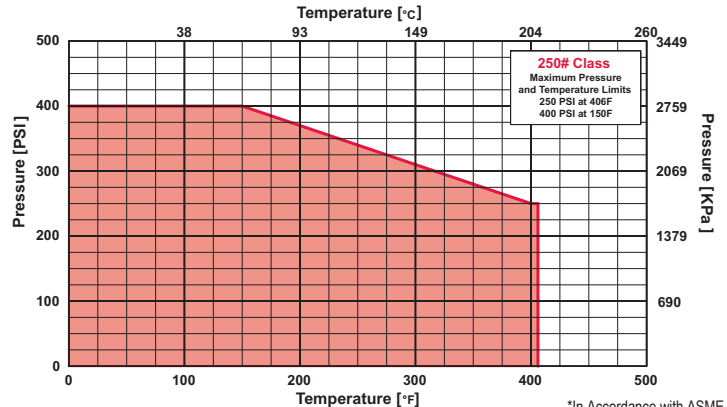
TOTAL SCREEN AREA

| Size | (in ²) | Size | (in ²) | Size | (in ²) |
|------|--------------------|--------|--------------------|--------|--------------------|
| 1/2" | 5.50 | 1-1/4" | 18.69 | 2-1/2" | 54.13 |
| 3/4" | 8.59 | 1-1/2" | 23.37 | 3" | 73.51 |
| 1" | 15.22 | 2" | 36.23 | 4" | 154.98 |

*See DETERMINING RATIOS on page S5 of the Strainer Information Section for calculating NET FREE AREA of the screen to inside pipe area.

PRESSURE vs. TEMPERATURE CHART

250# Threaded Cast Iron (ASTM A 126, Class B)



*In Accordance with ASME B16.4

Style B7

Y-Strainer

Cast Iron (ASTM A 126, Class B)

250 lb. Threaded



Cast Iron Y-Strainer

APPLICATIONS

Steam, water, oil or gas where protection from foreign matter in a pipeline is required.

CONSTRUCTION

The Keckley Style B7 strainers are constructed from rugged cast iron castings that are machined to exacting specifications.

FEATURES

The Keckley Style B7 strainer features a straight thread bushing in sizes 1/4" thru 3". All Keckley Style B7 strainers are furnished standard with a NPT blow-off connection and can be supplied with a cast iron blow-off plug upon request.

SCREENS

Standard screens are 20 mesh 304 stainless steel through size 2". Sizes 2-1/2" and 3" are furnished with 1/16" perforated 304 stainless steel screens. All screens are spot welded for maximum strength. Different size perforations and meshes are available in stainless steel, monel, and brass to meet specific media requirements. If media is not indicated, screens for *water* will be supplied.

SELF CLEANING

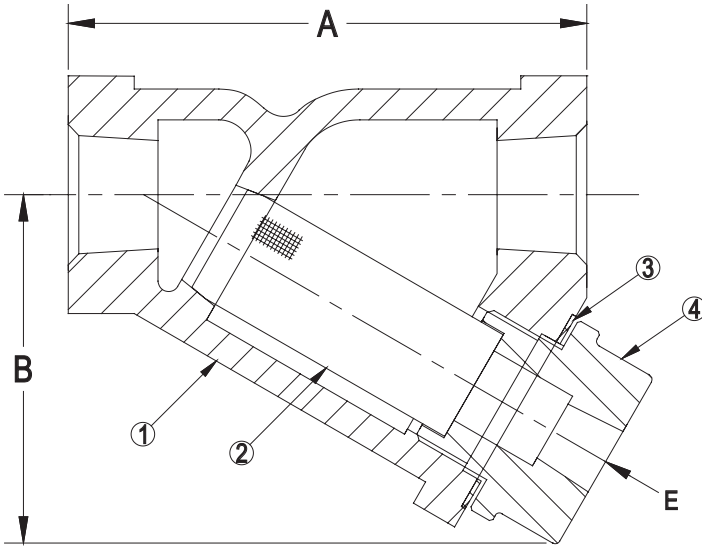
Self cleaning is accomplished by opening the valve or drain plug connected to the blow-off port. **Warning:** See Maintenance Instructions on page **S6** of the Strainer Information Section for additional precautions and detailed information on servicing the strainer.

WORKING PRESSURES - NON SHOCK

| NOM. RATING | MEDIA | 1/4" to 3" | 8 mm to 80 mm |
|-----------------|--------|-----------------|------------------|
| 250# (Threaded) | STEAM | 250 PSI @ 406°F | 1724 KPa @ 208°C |
| | W.O.G. | 400 PSI @ 150°F | 2759 KPa @ 66°C |

Style B7

Y-Strainer, 250 lb. Threaded
Cast Iron (ASTM A 126, Class B)



PARTS LIST

| ITEM | DESCRIPTION | MATERIAL |
|------|-------------|---------------------------------|
| 1 | Body | Cast Iron (ASTM A 126, Class B) |
| 2 | Screen | Stainless Steel (304) |
| 3 | Gasket | Graphite |
| 4 | Bushing | Cast Iron (ASTM A 126, Class B) |

Optional: Blow-off Plug, Malleable Iron

STANDARD SCREENS SUPPLIED

| SIZE | | SCREEN PERFORATION | | | |
|----------|---------|-------------------------|-----------|-------------|-----------|
| | | FOR STEAM | OPEN AREA | FOR LIQ-UID | OPEN AREA |
| in | mm | in | mm | in | mm |
| 1/4 to 2 | 8 to 50 | 20 MESH STAINLESS STEEL | | | 49% |

Standard screens supplied are for **liquid service**, unless otherwise specified.
Options: Other meshes, perforations, and screen materials are available.

| SIZE | | DIMENSIONS | | | | | | WEIGHTS | |
|-------|----|------------|-----|--------|-----|-------|----|---------|------|
| | | A | | B | | E | | | |
| in | mm | in | mm | in | mm | in | mm | lbs | kgs |
| 1/4 | 8 | 3-3/16 | 81 | 2-1/16 | 52 | 1/4 | 8 | 2 | 0.7 |
| 3/8 | 10 | 3-3/16 | 81 | 2-1/16 | 52 | 1/4 | 8 | 2 | 0.7 |
| 1/2 | 15 | 3-3/16 | 81 | 2-1/16 | 52 | 1/4 | 8 | 2 | 0.7 |
| 3/4 | 20 | 3-3/4 | 95 | 2-7/16 | 61 | 3/8 | 10 | 3 | 1.0 |
| 1 | 25 | 4 | 102 | 2-5/8 | 66 | 3/8 | 10 | 3 | 1.4 |
| 1-1/4 | 32 | 5 | 127 | 3-3/8 | 85 | 3/4 | 20 | 5 | 2.3 |
| 1-1/2 | 40 | 5-3/4 | 146 | 3-7/8 | 98 | 3/4 | 20 | 7 | 3.0 |
| 2 | 50 | 7- | 177 | 4-3/4 | 121 | 1 | 25 | 13 | 5.7 |
| 2-1/2 | 65 | 9-1/4 | 235 | 5-7/8 | 149 | 1-1/2 | 40 | 26 | 11.4 |
| 3 | 80 | 10 | 254 | 6 | 152 | 1-1/2 | 40 | 30 | 13.6 |

Certified dimensional drawings are available upon request.

[†]This table reflects only the nearest metric equivalents.

FLOW COEFFICIENTS

| Size | C _v | Size | C _v | Size | C _v |
|------|----------------|--------|----------------|--------|----------------|
| 1/4" | 0.7 | 1" | 22 | 2-1/2" | 110 |
| 3/8" | 2 | 1-1/4" | 38 | 3" | 160 |
| 1/2" | 8 | 1-1/2" | 42 | | |
| 3/4" | 15 | 2" | 71 | | |

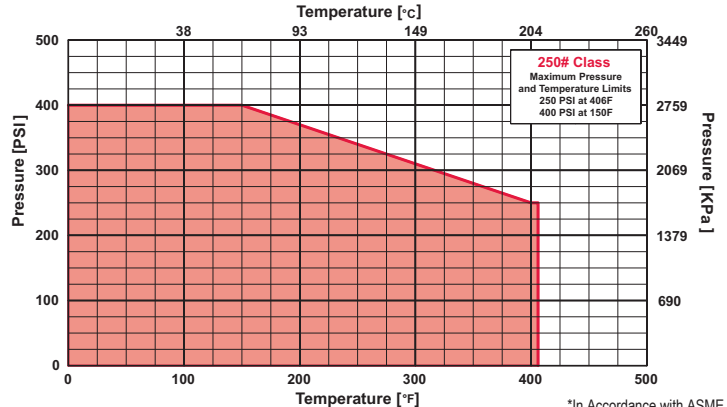
TOTAL SCREEN AREA

| Size | (in ²) | Size | (in ²) | Size | (in ²) |
|------|--------------------|--------|--------------------|--------|--------------------|
| 1/4" | 3.57 | 1" | 8.06 | 2-1/2" | 47.12 |
| 3/8" | 3.57 | 1-1/4" | 12.94 | 3" | 47.12 |
| 1/2" | 3.57 | 1-1/2" | 18.85 | | |
| 3/4" | 6.05 | 2" | 27.44 | | |

*See DETERMINING RATIOS on page S5 of the Strainer Information Section for calculating NET FREE AREA of the screen to inside pipe area.

PRESSURE vs. TEMPERATURE CHART

250# Threaded Cast Iron (ASTM A 126, Class B)



*In Accordance with ASME B16.4

Style A-7

Y-Strainer

Cast Iron (ASTM A 126, Class B)

125 lb.



Cast Iron Y-Strainer

APPLICATIONS

Steam, water, oil or gas where protection from foreign matter in a pipeline is required.

CONSTRUCTION

The Keckley Style A-7 strainers are constructed from rugged cast iron castings that are machined to exacting specifications. These bodies have drilled flanges that are in accordance with ASME B16.1.

FEATURES

The Keckley Style A-7 strainer features a machined groove in both the body and cover for proper screen alignment and to ensure accurate reseating when servicing is required. Style A-7 strainers are furnished with a synthetic fiber that is compressed between the body and cover for maximum strength and durability. Keckley Style A-7 strainers can be furnished with a blow-off plug upon request.

SCREENS

Standard perforated 304 stainless steel screens are spot welded along the seam for maximum strength. Different size perforations and meshes are available in stainless steel, monel, and brass to meet specific media requirements. If the media is not indicated, screens for *water* will be supplied.

SELF CLEANING

Self cleaning is accomplished by opening the valve or drain plug connected to the blow-off port. **Warning:** See Maintenance Instructions on page S6 of the Strainer Information Section for additional precautions and detailed information on servicing the strainer.

WORKING PRESSURES - NON SHOCK

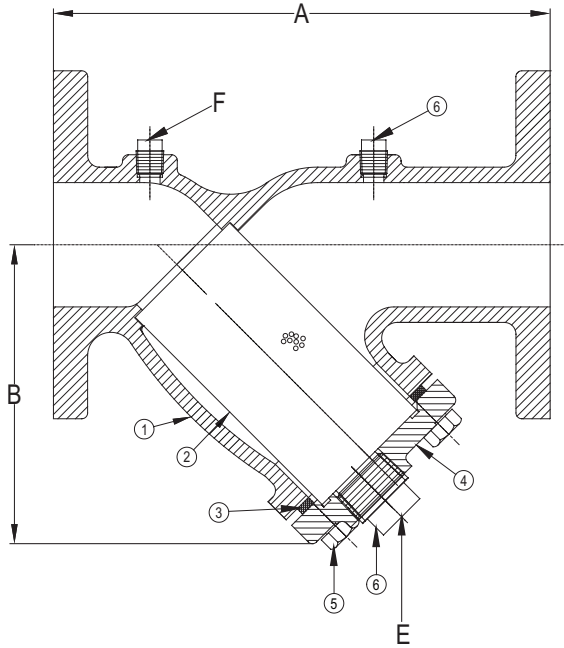
| NOM. RATING | MEDIA | 2" to 12" | 50 mm to 300 mm |
|-------------------------------------|--------------|-------------------|----------------------|
| 125# F.F. & D. (STANDARD FLANGE) | STEAM | 125 PSI @ 450°F | 862 KPa @ 232°C |
| | W.O.G. | 200 PSI @ 150°F | 1379 KPa @ 66°C |
| | MEDIA | 14" and UP | 350 mm and UP |
| | STEAM | 100 PSI @ 353°F | 690 KPa @ 178°C |
| | W.O.G. | 150 PSI @ 150°F | 1035 KPa @ 66°C |

GOVERNMENT/MILITARY SPECIFICATIONS

Style A-7 cast iron flanged strainers meet or exceed government specification WW-S-2739 (Supersedes MIL-S-16293).

Style A-7

Y-Strainer, 125 lb. Flanged
Cast Iron (ASTM A 126, Class B)



PARTS LIST

| ITEM | DESCRIPTION | MATERIAL |
|------|--------------------|---------------------------------|
| 1 | Body | Cast Iron (ASTM A 126, Class B) |
| 2 | Screen | Stainless Steel (304) |
| 3 | Gasket | Composition |
| 4 | Cover | Cast Iron (ASTM A 126, Class B) |
| 5 | Hex Head Cap Screw | Steel |
| 6 | Plug | Carbon Steel (ASTM A 105) |

STANDARD SCREENS SUPPLIED

| SIZE | | SCREEN GAGE | SCREEN PERFORATION | | | | | |
|---------|------------|-------------|--------------------|-----|-----------------|------|-----------|-----|
| | | | FOR STEAM | | OPEN FOR LIQUID | | OPEN AREA | |
| in | mm | | in | mm | in | mm | in | mm |
| 2 to 4 | 50 to 100 | 28 | 3/64 | 1.2 | 33% | 1/16 | 1.6 | 30% |
| 5 to 10 | 125 to 250 | 24 | 3/64 | 1.2 | 33% | 1/8 | 3.2 | 43% |
| 12 | 300 | 24 | 1/16 | 1.6 | 30% | 1/8 | 3.2 | 43% |
| 14 & up | 350 & UP | 20 | 1/8 | 3.2 | 43% | 1/8 | 3.2 | 43% |

Standard screens supplied are for **liquid service**, unless otherwise specified.
Options: Other perforations, meshes, and screen materials are available.

| SIZE | | DIMENSIONS | | | | | | | | WEIGHTS | |
|-------|-----|------------|------|---------|------|-------|----|-----|----|---------|------|
| | | A | | B | | E | | F | | | |
| in | mm | in | mm | in | mm | in | mm | in | mm | lbs | kgs |
| 2 | 50 | 7-7/8 | 200 | 5-1/16 | 129 | 1/2 | 15 | 1/4 | 8 | 17 | 8 |
| 2-1/2 | 65 | 10 | 254 | 6-1/8 | 156 | 1 | 25 | 1/4 | 8 | 24 | 11 |
| 3 | 80 | 10-1/8 | 257 | 6-9/16 | 167 | 1 | 25 | 1/4 | 8 | 31 | 14 |
| 4 | 100 | 12-1/8 | 308 | 8-1/16 | 205 | 1-1/2 | 40 | 1/4 | 8 | 50 | 23 |
| 5 | 125 | 15-5/8 | 397 | 11 | 278 | 2 | 50 | 1/4 | 8 | 86 | 39 |
| 6 | 150 | 18-1/2 | 470 | 12-5/8 | 322 | 2 | 50 | 1/4 | 8 | 114 | 52 |
| 8 | 200 | 21-5/8 | 549 | 15-5/8 | 396 | 2 | 50 | 1/4 | 8 | 203 | 92 |
| 10 | 250 | 25-3/4 | 654 | 17-3/4 | 451 | 2 | 50 | 1/4 | 8 | 293 | 133 |
| 12 | 300 | 29-7/8 | 759 | 21-5/16 | 542 | 2 | 50 | 1/4 | 8 | 489 | 222 |
| 14 | 350 | 33-1/4 | 846 | 26-3/4 | 680 | 2 | 50 | N/A | | 772 | 350 |
| 16 | 400 | 38-3/4 | 984 | 30-1/8 | 765 | 2 | 50 | N/A | | 994 | 451 |
| 18 | 450 | 43-1/2 | 1105 | 33-1/4 | 845 | 2 | 50 | N/A | | 1379 | 626 |
| 20 | 500 | 49-1/2 | 1257 | 39-1/4 | 997 | 2 | 50 | N/A | | 1652 | 750 |
| 24 | 600 | 55-13/16 | 1418 | 41 | 1041 | 2 | 50 | N/A | | 3400 | 1542 |

Certified dimensional drawings are available upon request.

†This table reflects only the nearest metric equivalents.

FLOW COEFFICIENTS

| Size | C _v | Size | C _v | Size | C _v | Size | C _v |
|--------|----------------|------|----------------|------|----------------|------|----------------|
| 2" | 62 | 5" | 364 | 12" | 2261 | 20" | 8064 |
| 2 1/2" | 98 | 6" | 585 | 14" | 3479 | | |
| 3" | 155 | 8" | 942 | 16" | 5060 | | |
| 4" | 269 | 10" | 1572 | 18" | 6008 | | |

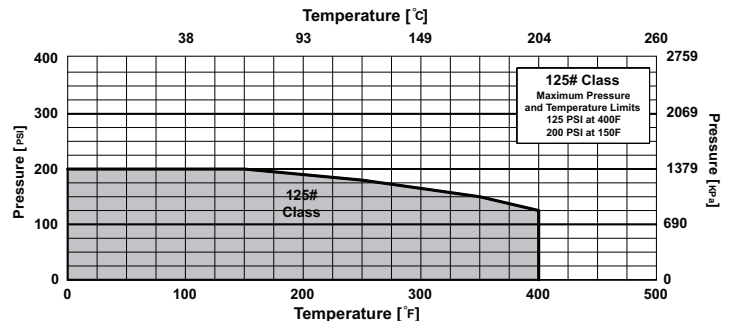
TOTAL SCREEN AREA

| Size | (in ²) | Size | (in ²) | Size | (in ²) | Size | (in ²) |
|--------|--------------------|------|--------------------|------|--------------------|------|--------------------|
| 2" | 28.84 | 5" | 143.94 | 12" | 596.07 | 20" | 2768 |
| 2 1/2" | 45.47 | 6" | 237.76 | 14" | 1041 | | |
| 3" | 54.68 | 8" | 345.30 | 16" | 1341 | | |
| 4" | 91.12 | 10" | 537.30 | 18" | 1697 | | |

*See DETERMINING RATIOS on page S5 of the Strainer Information Section for calculating NET FREE AREA of the screen to inside pipe area.

PRESSURE vs. TEMPERATURE CHART

125# Flanged Cast Iron (ASTM A 126, Class B)
Suitable for use with pipe sizes up to 12"



*In Accordance with ASME B16.1

Style A

Y-Strainer

Cast Iron (ASTM A 126, Class B)

250 lb.



Cast Iron Y-Strainer

APPLICATIONS

Steam, water, oil or gas where protection from foreign matter in a pipeline is required.

CONSTRUCTION

The Keckley Style A strainers are constructed from rugged cast iron castings that are machined to exacting specifications. These bodies have drilled flanges that are in accordance with ASME B16.1.

FEATURES

The Keckley Style A strainer features a machined groove in both the body and cover for proper screen alignment and to ensure accurate reseating when servicing is required. The gasket is a synthetic fiber that is compressed between the body and cover for maximum strength and durability. Keckley Style A strainers can be furnished with a blow-off plug upon request.

SCREENS

Standard perforated 304 stainless steel screens are spot welded along the seam for maximum strength. Different size perforations and meshes are available in stainless steel, monel, and brass to meet specific media requirements. If the media is not indicated, screens for *water* will be supplied.

SELF CLEANING

Self cleaning is accomplished by opening the valve or drain plug connected to the blow-off port. **Warning:** See Maintenance Instructions on page S6 of the Strainer Information Section for additional precautions and detailed information on servicing the strainer.

WORKING PRESSURES - NON SHOCK

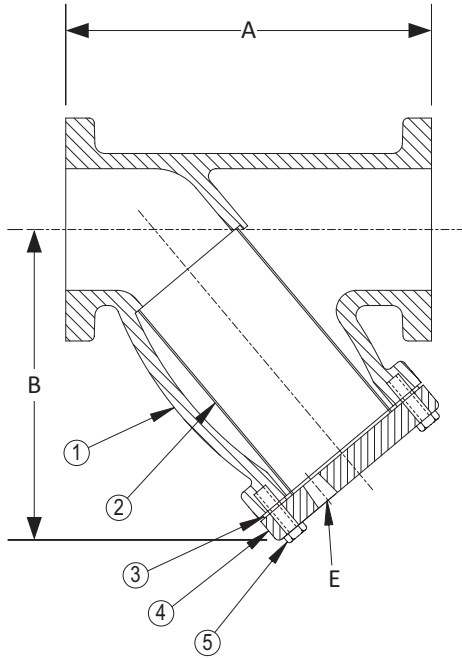
| NOM. RATING | MEDIA | 2" to 12" | 50 mm to 300 mm |
|--------------------------------------|--------|-----------------|-------------------|
| 250# R.F. & D. (EX. HEAVY FLANGE) | STEAM | 250 PSI @ 450°F | 1724 KPa @ 232°C |
| | W.O.G. | 500 PSI @ 150°F | 3449 KPa @ 66°C |
| | MEDIA | 14" and 16" | 350 mm and 400 mm |
| | STEAM | 200 PSI @ 406°F | 1379 KPa @ 208°C |
| | W.O.G. | 300 PSI @ 150°F | 2069 KPa @ 66°C |

GOVERNMENT/MILITARY SPECIFICATIONS

Style A cast iron flanged strainers meet or exceed government specification WW-S-2739 (Supersedes MIL-S-16293).

Style A

Y-Strainer, 250 lb. Flanged
Cast Iron (ASTM A 126, Class B)



PARTS LIST

| ITEM | DESCRIPTION | MATERIAL |
|------|--------------------|---------------------------------|
| 1 | Body | Cast Iron (ASTM A 126, Class B) |
| 2 | Screen | Stainless Steel (304) |
| 3 | Gasket | Composition |
| 4 | Cover | Cast Iron (ASTM A 126, Class B) |
| 5 | Hex Head Cap Screw | Steel |

Optional: Blow-off Plug (Malleable Iron).

STANDARD SCREENS SUPPLIED

| SIZE | | SCREEN GAGE | SCREEN PERFORATION | | | | | |
|---------|------------|-------------|--------------------|-----|------------|------|-----------|-----|
| | | | FOR STEAM | | FOR LIQUID | | OPEN AREA | |
| in | mm | | in | mm | in | mm | in | mm |
| 2 to 4 | 50 to 100 | 28 | 3/64 | 1.2 | 33% | 1/16 | 1.6 | 30% |
| 5 to 10 | 125 to 250 | 24 | 3/64 | 1.2 | 33% | 1/8 | 3.2 | 43% |
| 12 | 300 | 24 | 1/16 | 1.6 | 30% | 1/8 | 3.2 | 43% |
| 14 & 16 | 350 & 400 | 20 | 1/8 | 3.2 | 43% | 1/8 | 3.2 | 43% |

Standard screens supplied are for **liquid service**, unless otherwise specified.
Options: Other perforations, meshes, and screen materials are available.

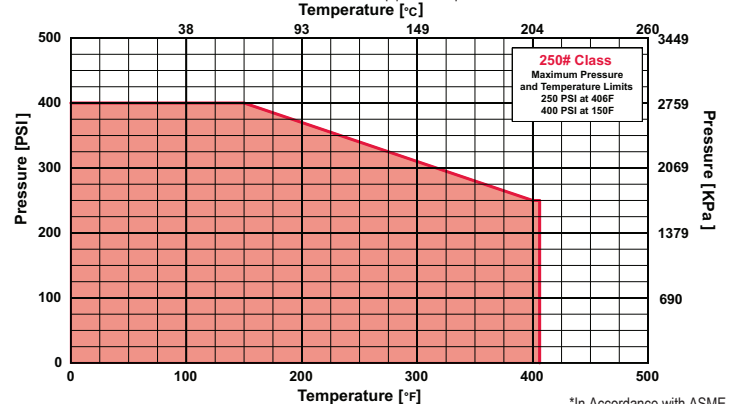
| SIZE | | DIMENSIONS | | | | | | WEIGHTS | |
|-------|-----|------------|------|--------|-----|-------|----|---------|-----|
| | | A | | B | | E | | | |
| in | mm | in | mm | in | mm | in | mm | lbs | kgs |
| 2 | 50 | 9-7/8 | 251 | 6-1/4 | 159 | 1/2 | 15 | 33 | 15 |
| 2-1/2 | 65 | 11-1/4 | 286 | 7-3/4 | 197 | 1 | 25 | 49 | 22 |
| 3 | 80 | 12-1/2 | 318 | 8-1/4 | 210 | 1 | 25 | 57 | 26 |
| 4 | 100 | 14-5/8 | 371 | 10-1/8 | 257 | 1-1/4 | 32 | 106 | 48 |
| 5 | 125 | 18 | 457 | 12-1/2 | 318 | 1-1/4 | 32 | 157 | 71 |
| 6 | 150 | 20-3/8 | 518 | 14-3/8 | 365 | 1-1/2 | 40 | 215 | 98 |
| 8 | 200 | 23-7/8 | 606 | 17-1/2 | 445 | 1-1/2 | 40 | 315 | 143 |
| 10 | 250 | 29-5/8 | 752 | 21 | 533 | 2 | 50 | 525 | 238 |
| 12 | 300 | 33-3/4 | 857 | 23-5/8 | 600 | 2 | 50 | 700 | 318 |
| 14 | 350 | 38 | 965 | 27-1/8 | 689 | 2 | 50 | 1400 | 635 |
| 16 | 400 | 42-3/8 | 1076 | 29-1/4 | 743 | 2 | 50 | 1850 | 839 |

Certified dimensional drawings are available upon request.

[†]This table reflects only the nearest metric equivalents.

PRESSURE vs. TEMPERATURE CHART

250# Flanged Cast Iron (ASTM A 126, Class B)
Suitable for use with pipe sizes up to 12"



[†]In Accordance with ASME B16.1

Style BDI

Y-Strainer

Ductile Iron (ASTM A 536, Grade 65-45-12)

300 lb. Threaded



Ductile Iron Y-Strainer

APPLICATIONS

Steam, water, oil or gas where protection from foreign matter in a pipeline is required.

CONSTRUCTION

The Keckley Style BDI strainers are constructed from rugged ductile iron castings that are machined to exacting specifications.

FEATURES

The Keckley Style BDI features a tapered bushing and is furnished standard with a NPT blow-off connection and can be supplied with an iron blow-off plug upon request.

SCREENS

Standard screens are 20 mesh 304 stainless steel and are spot welded for maximum strength. Different size perforations and meshes are available in stainless steel, monel, and brass to meet specific media requirements. If media is not indicated, screens for *water* will be supplied.

SELF CLEANING

Self cleaning is accomplished by opening the valve or drain plug connected to the blow-off port. **Warning:** See Maintenance Instructions on page **S6** of the Strainer Information Section for additional precautions and detailed information on servicing the strainer.

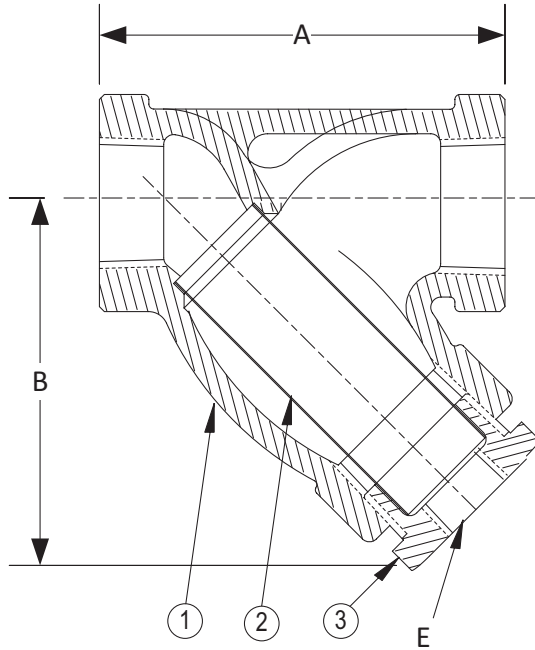
WORKING PRESSURES - NON SHOCK

| NOM. RATING | MEDIA | 1/2" to 2" | 15 mm to 50 mm |
|-----------------|--------|-----------------|------------------|
| 300# (Threaded) | STEAM | 450 PSI @ 650°F | 3104 KPa @ 343°C |
| | W.O.G. | 640 PSI @ 100°F | 4414 KPa @ 38°C |

Style BDI

Y-Strainer, 300 lb. Threaded

Ductile Iron (ASTM A 536, Grade 65-45-12)



PARTS LIST

| ITEM | DESCRIPTION | MATERIAL |
|------|-------------|---|
| 1 | Body | Ductile Iron (ASTM A 536, Grade 65-45-12) |
| 2 | Screen | Stainless Steel (304) |
| 3 | Bushing | Ductile Iron |

Optional: Blow-off Plug, Malleable Iron.

STANDARD SCREENS SUPPLIED

| SIZE | | SCREEN PERFORATION | | | |
|------|----|--------------------|-----------|-------------|-----------|
| | | FOR STEAM | OPEN AREA | FOR LIQ-UID | OPEN AREA |
| in | mm | in | mm | in | mm |

Options: Other meshes, perforations, and screen materials are available.

| SIZE | | DIMENSIONS | | | | | | WEIGHTS | |
|-------|----|------------|-----|-------|-----|-------|----|---------|-----|
| | | A | | B | | E | | | |
| in | mm | in | mm | in | mm | in | mm | lbs | kgs |
| 1/2 | 15 | 3 | 76 | 2-5/8 | 67 | 3/8 | 10 | 2 | 0.9 |
| 3/4 | 20 | 4 | 102 | 3-5/8 | 92 | 1/2 | 15 | 3 | 1.4 |
| 1 | 25 | 4-7/8 | 124 | 4-1/2 | 114 | 3/4 | 20 | 4.5 | 2.0 |
| 1-1/4 | 32 | 5-1/8 | 130 | 4-3/4 | 121 | 3/4 | 20 | 6 | 2.7 |
| 1-1/2 | 40 | 5-3/4 | 146 | 4-7/8 | 124 | 1 | 25 | 8 | 3.6 |
| 2 | 50 | 7-1/4 | 184 | 5-3/4 | 146 | 1-1/4 | 32 | 15.5 | 7.0 |

*This table reflects only the nearest metric equivalents.

FLOW COEFFICIENTS

| Size | C _v | Size | C _v | Size | C _v |
|------|----------------|--------|----------------|--------|----------------|
| 1/2" | 9.5 | 1" | 30 | 1-1/2" | 61 |
| 3/4" | 18.7 | 1-1/4" | 44.9 | 2" | 98 |

TOTAL SCREEN AREA

| Size | (in ²) | Size | (in ²) | Size | (in ²) |
|------|--------------------|--------|--------------------|--------|--------------------|
| 1/2" | 5.50 | 1" | 15.22 | 1-1/2" | 23.37 |
| 3/4" | 8.59 | 1-1/4" | 18.69 | 2" | 36.23 |

*See DETERMINING RATIOS on page S5 of the Strainer Information Section for calculating NET FREE AREA of the screen to inside pipe area.

Tensile Strength: 60/80,000 PSI

Yield Strength: 45/60,000 PSI

Elongation: 10/30%

Certified Dimensional Drawings are Available Upon Request.

Style F-150

Y-Strainer

Cast Bronze (ASTM B 584, C84400)

125 lb. Threaded



Style E-150

Y-Strainer

Cast Bronze (ASTM B 584, C84400)

125 lb. Solder Joint



Cast Bronze Y-Strainer

APPLICATIONS

Steam, water, oil or gas where protection from foreign matter in a pipeline is required.

CONSTRUCTION

The Keckley Style F-150 & E-150 strainers are constructed from the finest bronze castings and are machined to exacting specifications.

Solder Joint Ends are in compliance with ASME B16.18 unless otherwise specified.

FEATURES

The Keckley Style F-150 & E-150 strainers feature a machined seat in the body and cap for proper alignment and to ensure accurate reseating when servicing is required. These strainers have a straight threaded cap and are furnished standard with a NPT blow-off connection. The gasket is a flat fiber gasket that is compressed between the body and cap for maximum strength and durability. Keckley Style F-150 & E-150 strainers are furnished with a bronze blow-off plug unless otherwise specified.

SCREENS

Standard screens are 20 mesh 304 stainless steel through size 2". Sizes 2-1/2", 3" and 4" are furnished with 3/64" perforated 304 stainless steel screens. All screens are spot welded for maximum strength. Different size perforations and meshes are available in stainless steel, monel, and brass to meet specific media requirements.

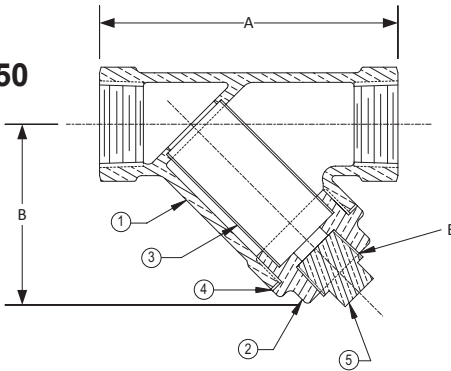
SELF CLEANING

Self cleaning is accomplished by opening the valve or drain plug connected to the blow-off port. **Warning:** See Maintenance Instructions on page S6 of the Strainer Information Section for additional precautions and detailed information on servicing the strainer.

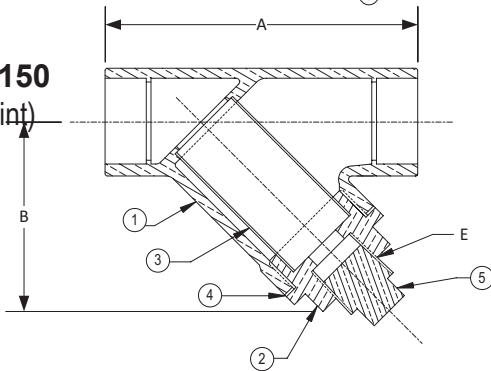
WORKING PRESSURES - NON SHOCK

| NOM. RATING | MEDIA | 1/4" to 3" | 8 mm to 80 mm |
|--------------------------------|--------|-----------------|-----------------|
| 125# (THREADED & SOLDER JOINT) | STEAM | 125 PSI @ 400°F | 862 KPa @ 204°C |
| | W.O.G. | 200 PSI @ 150°F | 1379 KPa @ 66°C |

Style F-150 (Threaded)



Style E-150 (Solder Joint)



Style F-150 & E-150

Y-Strainer, 125 lb. Threaded & Solder Joint
Cast Bronze (ASTM B 584, C84400)

PARTS LIST

| ITEM | DESCRIPTION | MATERIAL |
|------|-------------|------------------------------|
| 1 | Body | Bronze (ASTM A B584, C84400) |
| 2 | Cap | Bronze (ASTM A B584, C84400) |
| 3 | Screen | Stainless Steel (304) |
| 4 | Gasket | Composition |
| 5 | Plug | Bronze (ASTM A B584, C84400) |

STANDARD SCREENS SUPPLIED

| SIZE | | SCREEN PERFORATION | | | |
|----------|---------|-------------------------|----|-----------|-------------|
| | | FOR STEAM | | OPEN AREA | FOR LIQ-UID |
| in | mm | in | mm | in | mm |
| 1/4 to 2 | 8 to 50 | 20 MESH STAINLESS STEEL | | | |
| | | | | | 49% |

Options: Other meshes, perforations, and screen materials are available.

| SIZE | | DIMENSIONS | | | | | | | | | | | | WEIGHTS | | | |
|-------|----|------------|-----|--------|-----|--------|-----|--------|-----|-------|----|-------|----|---------|-----|-------|-----|
| | | A | | | | B | | | | E | | | | | | | |
| | | F-150 | | E-150 | | F-150 | | E-150 | | F-150 | | E-150 | | F-150 | | E-150 | |
| in | mm | in | mm | in | mm | in | mm | in | mm | in | mm | in | mm | lbs | kgs | lbs | kgs |
| 1/4 | 8 | 3-3/16 | 81 | 3-3/8 | 86 | 2-1/4 | 57 | 2-1/4 | 57 | 3/8 | 10 | 3/8 | 10 | 0.80 | 0.4 | 0.75 | 0.3 |
| 3/8 | 10 | 3-3/16 | 81 | 3-3/8 | 86 | 2-1/4 | 57 | 2-1/4 | 57 | 3/8 | 10 | 3/8 | 10 | 0.80 | 0.4 | 0.75 | 0.3 |
| 1/2 | 15 | 3-3/16 | 81 | 3-3/8 | 86 | 2-1/4 | 57 | 2-1/4 | 57 | 3/8 | 10 | 3/8 | 10 | 0.80 | 0.4 | 0.75 | 0.3 |
| 3/4 | 20 | 3-15/16 | 100 | 4-1/4 | 108 | 2-5/8 | 67 | 2-5/8 | 67 | 3/8 | 10 | 3/8 | 10 | 1.20 | 0.5 | 1.00 | 0.5 |
| 1 | 25 | 4-1/2 | 114 | 5 | 127 | 3 | 76 | 3-3/16 | 81 | 1/2 | 15 | 1/2 | 15 | 1.80 | 0.8 | 2.25 | 1.0 |
| 1-1/4 | 32 | 5-5/16 | 135 | 5-7/8 | 149 | 3-9/16 | 90 | 3-3/4 | 95 | 1/2 | 15 | 1/2 | 15 | 2.70 | 1.2 | 2.75 | 1.2 |
| 1-1/2 | 40 | 6-3/16 | 157 | 6-7/8 | 175 | 4 | 102 | 4-1/8 | 105 | 1/2 | 15 | 1/2 | 15 | 3.60 | 1.6 | 3.25 | 1.5 |
| 2 | 50 | 7-1/2 | 191 | 8-5/8 | 219 | 4-5/8 | 117 | 5-1/8 | 130 | 1/2 | 15 | 1/2 | 15 | 5.60 | 2.5 | 5.75 | 2.6 |
| 2-1/2 | 65 | 9 | 229 | 10-3/8 | 264 | 5-1/2 | 140 | 5-3/4 | 146 | 1/2 | 15 | 1/2 | 15 | 10.00 | 4.5 | 8.50 | 3.9 |
| 3 | 80 | 10-1/8 | 257 | 11-3/4 | 298 | 6-1/8 | 156 | 6-1/2 | 165 | 1/2 | 15 | 1/2 | 15 | 13.50 | 6.1 | 12.50 | 5.7 |

Certified dimensional drawings are available upon request.

†This table reflects only the nearest metric equivalents.

FLOW COEFFICIENTS

| Size | C _v | Size | C _v | Size | C _v |
|------|----------------|--------|----------------|--------|----------------|
| 1/4" | 9.5 | 1" | 30 | 2-1/2" | 129.7 |
| 3/8" | 9.5 | 1-1/4" | 44.9 | 3" | 161.3 |
| 1/2" | 9.5 | 1-1/2" | 61 | | |
| 3/4" | 18.7 | 2" | 98 | | |

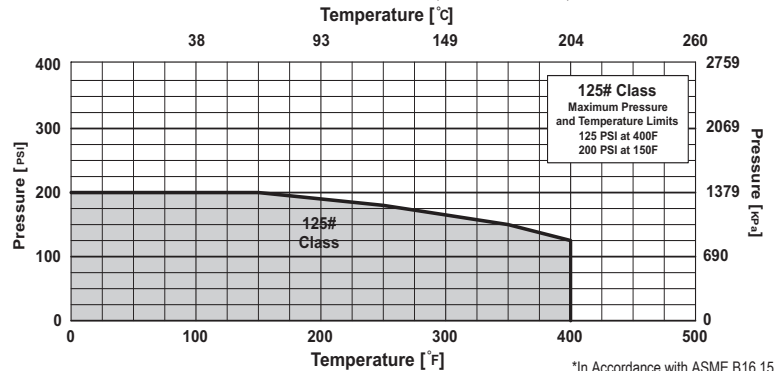
TOTAL SCREEN AREA

| Size | (in ²) | Size | (in ²) | Size | (in ²) |
|------|--------------------|--------|--------------------|--------|--------------------|
| 1/4" | 3.09 | 1" | 9.54 | 2-1/2" | 46.98 |
| 3/8" | 3.09 | 1-1/4" | 14.26 | 3" | 62.87 |
| 1/2" | 3.09 | 1-1/2" | 19.94 | | |
| 3/4" | 7.36 | 2" | 33.39 | | |

*See DETERMINING RATIOS on page S5 of the Strainer Information Section for calculating NET FREE AREA of the screen to inside pipe area.

PRESSURE vs. TEMPERATURE CHART

125# Threaded & Solder Joint Bronze (ASTM B 584, C84400)



Style F7

Y-Strainer

Cast Bronze (ASTM B 584, C89833)

125 lb. Threaded



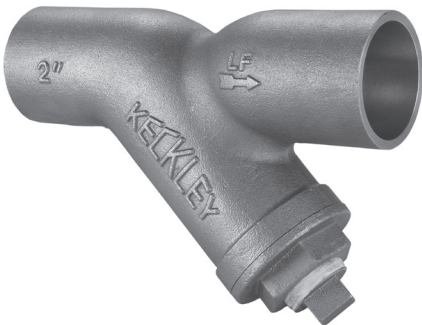
*The wetted surface of this product contacted by consumable water contains less than 0.25% of lead by weight.

Style E7

Y-Strainer

Cast Bronze (ASTM B 584, C89833)

125 lb. Solder Joint



*The wetted surface of this product contacted by consumable water contains less than 0.25% of lead by weight.

Cast Bronze Y-Strainer (Lead Free*)

APPLICATIONS

Steam, water, oil or gas where protection from foreign matter in a pipeline is required.

CONSTRUCTION

The Keckley Style F7 & E7 strainers are constructed from the finest bronze castings and are machined to exacting specifications.

Solder Joint Ends are in compliance with ASME B16.8 unless otherwise specified.

FEATURES

The Keckley Style F7 & E7 strainers feature a machined seat in the body and cap for proper alignment and to ensure accurate reseating when servicing is required. These strainers have a straight threaded cap and are furnished standard with a NPT blow-off connection. The gasket is a flat PTFE gasket that is compressed between the body and cap for maximum strength and durability. Keckley Style F7 & E7 strainers are furnished with a bronze blow-off plug unless otherwise specified.

SCREENS

Standard screens are 20 mesh 304 stainless steel through size 2". Sizes 2-1/2", 3" and 4" are furnished with 3/64" perforated 304 stainless steel screens. All screens are spot welded for maximum strength. Different size perforations and meshes are available in stainless steel, monel, and brass to meet specific media requirements.

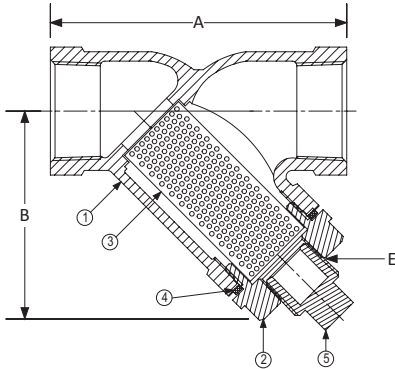
SELF CLEANING

Self cleaning is accomplished by opening the valve or drain plug connected to the blow-off port. **Warning:** See Maintenance Instructions on page S6 of the Strainer Information Section for additional precautions and detailed information on servicing the strainer.

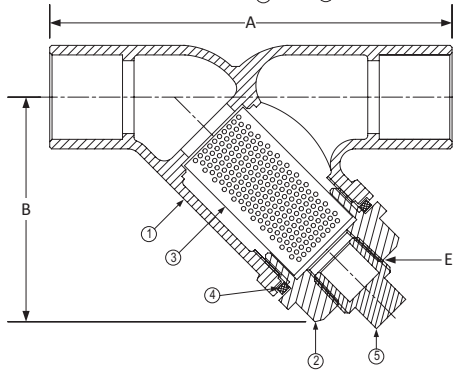
WORKING PRESSURES - NON SHOCK

| NOM. RATING | MEDIA | 1/4" to 3" | 8 mm to 80 mm |
|--------------------------------|--------|-----------------|-----------------|
| 125# (THREADED & SOLDER JOINT) | STEAM | 125 PSI @ 400°F | 862 KPa @ 204°C |
| | W.O.G. | 200 PSI @ 150°F | 1379 KPa @ 66°C |

Style F7
(Threaded)



Style E7
(Solder Joint)



Style F7 & E7

Y-Strainer, 125 lb. Threaded & Solder Joint
Cast Bronze (ASTM B 584, C89833) Lead Free*

PARTS LIST

| ITEM | DESCRIPTION | MATERIAL |
|------|-------------|-----------------------------|
| 1 | Body | Bronze (ASTM B 584, C89833) |
| 2 | Cap | Bronze (ASTM B 584, C89833) |
| 3 | Screen | Stainless Steel (304) |
| 4 | Gasket | PTFE |
| 5 | Plug | Bronze (ASTM B 584, C89833) |

*The wetted surface of this product contacted by consumable water contains less than 0.25% of lead by weight.

STANDARD SCREENS SUPPLIED

| SIZE | | SCREEN GAGE | SCREEN PERFORATION | | | |
|------------|---------|----------------|-------------------------|--------------|---------------------|--------------|
| in | mm | | FOR STEAM in mm | OPEN AREA | FOR LIQUID in mm | OPEN AREA |
| 1/4 to 2 | 8 to 50 | | 20 MESH STAINLESS STEEL | | | 49% |
| 2-1/2 to 3 | 65 & 80 | 28 | 3/64 1.2 | 33% | 3/64 1.2 | 33% |

Options: Other meshes, perforations, and screen materials are available.

| SIZE | | DIMENSIONS | | | | | | | | | | | | WEIGHTS | | | |
|-------|----|------------|-----|---------|-------|--------|-----|---------|-----|-------|----|-------|----|---------|------|-------|------|
| | | A | | | | B | | | | E | | | | | | | |
| | | F7 | | E7 | | F7 | | E7 | | F7 | | E7 | | F7 | | E7 | |
| in | mm | in | mm | in | mm | in | mm | in | mm | in | mm | in | mm | lbs | kgs | lbs | kgs |
| 1/4 | 8 | 2-9/16 | 65 | 2-1/16 | 53 | 1-7/8 | 48 | 1-3/8 | 35 | 1/4 | 8 | 1/8 | 6 | 0.63 | 0.29 | 0.20 | 0.09 |
| 3/8 | 10 | 2-9/16 | 65 | 3-1/8 | 80 | 1-7/8 | 48 | 1-13/16 | 46 | 1/4 | 8 | 1/4 | 8 | 0.58 | 0.26 | 0.46 | 0.21 |
| 1/2 | 15 | 2-9/16 | 65 | 3-1/8 | 80 | 1-7/8 | 48 | 1-15/16 | 49 | 1/4 | 8 | 1/4 | 8 | 0.55 | 0.25 | 0.48 | 0.22 |
| 3/4 | 20 | 3 | 77 | 4-1/8 | 105 | 2-1/4 | 57 | 2-5/16 | 59 | 3/8 | 10 | 3/8 | 10 | 0.87 | 0.39 | 0.86 | 0.39 |
| 1 | 25 | 3-3/4 | 95 | 4-15/16 | 125 | 2-7/16 | 62 | 2-5/8 | 67 | 1/2 | 15 | 1/2 | 15 | 1.38 | 0.63 | 1.25 | 0.57 |
| 1-1/4 | 32 | 4-7/16 | 113 | 5-11/16 | 145 | 3-3/8 | 86 | 3-1/4 | 83 | 1/2 | 15 | 1/2 | 15 | 2.90 | 1.32 | 2.06 | 0.93 |
| 1-1/2 | 40 | 4-7/8 | 123 | 6-5/8 | 170 | 3-9/16 | 91 | 3-11/16 | 94 | 3/4 | 20 | 3/4 | 20 | 3.27 | 1.48 | 2.93 | 1.33 |
| 2 | 50 | 5-1/4 | 133 | 8-1/4 | 210 | 4-5/16 | 110 | 4-1/2 | 114 | 1 | 25 | 1 | 25 | 4.99 | 2.26 | 5.48 | 2.49 |
| 2-1/2 | 65 | 6-15/16 | 175 | 9-3/4 | 247.5 | 5 | 127 | 5-3/8 | 137 | 1-1/4 | 32 | 1-1/4 | 32 | 9.88 | 4.48 | 10.16 | 4.61 |
| 3 | 80 | 7-7/8 | 200 | 11-3/8 | 289 | 5-5/8 | 143 | 6-1/8 | 156 | 1-1/2 | 40 | 1-1/2 | 40 | 14.20 | 6.44 | 14.30 | 6.49 |

Certified dimensional drawings are available upon request.

*This table reflects only the nearest metric equivalents.

FLOW COEFFICIENTS

| Size | C _v | Size | C _v | Size | C _v |
|------|----------------|--------|----------------|--------|----------------|
| 1/4" | 9.5 | 1" | 30 | 2-1/2" | 129.7 |
| 3/8" | 9.5 | 1-1/4" | 44.9 | 3" | 161.3 |
| 1/2" | 9.5 | 1-1/2" | 61 | | |
| 3/4" | 18.7 | 2" | 98 | | |

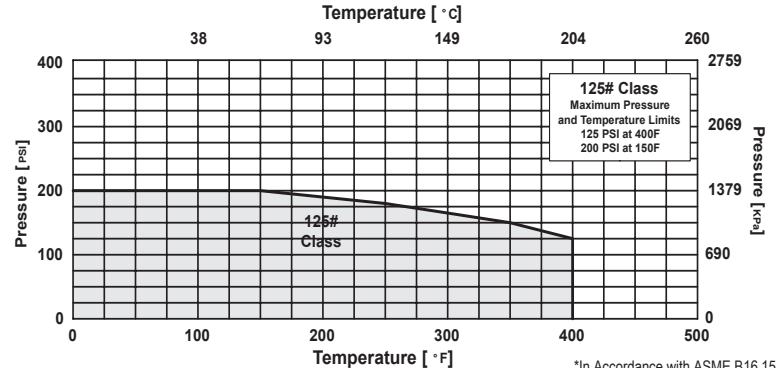
TOTAL SCREEN AREA

| Size | (in ²) | Size | (in ²) | Size | (in ²) |
|------|--------------------|--------|--------------------|--------|--------------------|
| 1/4" | 2.92 | 1" | 6.70 | 2-1/2" | 34.06 |
| 3/8" | 2.92 | 1-1/4" | 12.25 | 3" | 47.01 |
| 1/2" | 2.92 | 1-1/2" | 14.58 | | |
| 3/4" | 4.34 | 2" | 22.88 | | |

*See DETERMINING RATIOS on page S5 of the Strainer Information Section for calculating NET FREE AREA of the screen to inside pipe area.

PRESSURE vs. TEMPERATURE CHART

125# Threaded & Solder Joint Bronze (ASTM B 584, C89833)

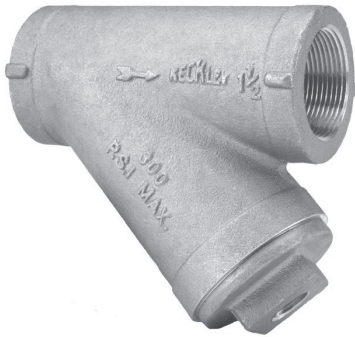


Style F-300

Y-Strainer

Cast Bronze (ASTM B 62, C83600)

250 lb. Threaded



Style E-300

Y-Strainer

Cast Bronze (ASTM B 62, C83600)

250 lb. Solder Joint



Cast Bronze Y-Strainer

APPLICATIONS

Steam, water, oil or gas where protection from foreign matter in a pipeline is required.

CONSTRUCTION

The Keckley Style F-300 & E-300 strainers are constructed from the finest bronze castings and are machined to exacting specifications.

Solder Joint Ends are in compliance with ASME B16.18 unless otherwise specified.

FEATURES

The Keckley Style F-300 & E-300 strainers feature a machined seat in the body and cap for proper alignment and to ensure accurate reseating when servicing is required. These strainers have a straight threaded cap and are furnished standard with a NPT blow-off connection. The gasket is a flat copper gasket that is compressed between the body and cap for a maximum strength and durability. Keckley Style F-300 & E-300 strainers can be furnished with a bronze blow-off plug upon request.

SCREENS

Standard perforated 304 stainless steel screens are spot welded along the seam for maximum strength. Different size perforations and meshes are available in stainless steel, monel, and brass to meet specific media requirements. If media is not indicated, screens for *water* will be supplied.

SELF CLEANING

Self cleaning is accomplished by opening the valve or drain plug connected to the blow-off port. **Warning:** See Maintenance Instructions on page **S6** of the Strainer Information Section for additional precautions and detailed information on servicing the strainer.

WORKING PRESSURES - NON SHOCK

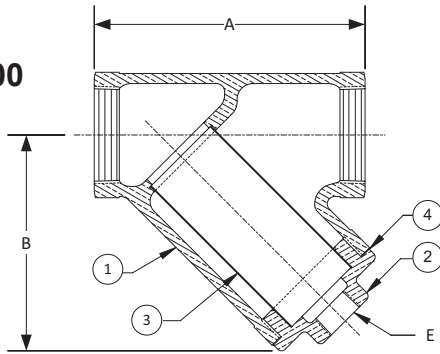
| NOM. RATING | MEDIA | 1/4" to 3" | 8 mm to 80 mm |
|--------------------------------|--------|------------------------------------|-------------------------------------|
| 250# (THREADED & SOLDER JOINT) | STEAM | 235 PSI @ 400°F | 1621 KPa @ 204°C |
| | W.O.G. | 400 PSI @ 150°F 250 PSI @ 400°F | 2759 KPa @ 66°C 1724 KPa @ 204°C |

GOVERNMENT/MILITARY SPECIFICATIONS

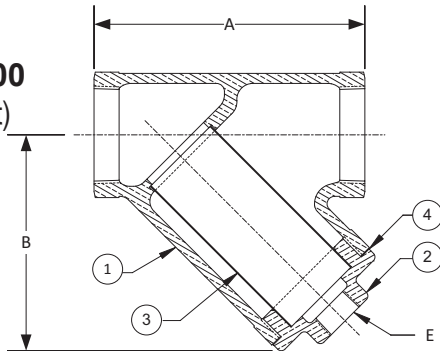
Specification: NAVSHIPS 810-841499.

Consult Factory for additional requirements.

Style F-300 (Threaded)



Style E-300 (Solder Joint)



Style F-300 & E-300

Y-Strainer, 250 lb. Threaded & Solder Joint
Cast Bronze (ASTM B 62, C83600)

PARTS LIST

| ITEM | DESCRIPTION | MATERIAL |
|------|-------------|----------------------------|
| 1 | Body | Bronze (ASTM B 62, C83600) |
| 2 | Cap | Bronze (ASTM B 62, C83600) |
| 3 | Screen | Stainless Steel (304) |
| 4 | Gasket | Copper |

Optional: Blow-off Plug, Brass.

STANDARD SCREENS SUPPLIED

| SIZE | | SCREEN PERFORATION | | | |
|------|----|--------------------|----|-----------|-------------|
| | | FOR STEAM | | OPEN AREA | FOR LIQ-UID |
| in | mm | in | mm | | in |

Standard screens supplied are for **liquid service**, unless otherwise specified.
Options: Other perforations, meshes, and screen materials are available.

| SIZE | | DIMENSIONS | | | | | | | | | | | | WEIGHTS | | | |
|-------|----|------------|-----|---------|-----|---------|-----|---------|-----|-------|----|-------|----|---------|------|-------|-----|
| | | A | | | | B | | | | E | | | | | | | |
| | | F-300 | | E-300 | | F-300 | | E-300 | | F-300 | | E-300 | | F-300 | | E-300 | |
| in | mm | in | mm | in | mm | in | mm | in | mm | in | mm | in | mm | lbs | kgs | lbs | kgs |
| 1/4 | 8 | 2-9/16 | 65 | 2-9/16 | 65 | 2 | 51 | 2 | 51 | 1/8 | 6 | 1/8 | 6 | 0.75 | 0.3 | 0.75 | 0.3 |
| 3/8 | 10 | 2-9/16 | 65 | 2-9/16 | 65 | 2 | 51 | 2 | 51 | 1/8 | 6 | 1/8 | 6 | 0.75 | 0.3 | 0.75 | 0.3 |
| 1/2 | 15 | 2-15/16 | 75 | 2-9/16 | 65 | 2-1/8 | 54 | 2 | 51 | 1/8 | 6 | 1/8 | 6 | 1.00 | 0.5 | 0.75 | 0.3 |
| 3/4 | 20 | 3-3/8 | 86 | 2-15/16 | 75 | 2-11/16 | 68 | 2-1/8 | 54 | 1/4 | 8 | 1/8 | 6 | 1.50 | 0.7 | 1.00 | 0.5 |
| 1 | 25 | 4-1/8 | 105 | 3-3/8 | 86 | 3 | 76 | 2-11/16 | 68 | 1/4 | 8 | 1/4 | 8 | 2.50 | 1.1 | 1.50 | 0.7 |
| 1-1/4 | 32 | 4-13/16 | 122 | 4-1/8 | 105 | 3-3/4 | 95 | 3 | 76 | 3/8 | 10 | 1/4 | 8 | 4.25 | 1.9 | 2.50 | 1.1 |
| 1-1/2 | 40 | 5-3/8 | 137 | 4-13/16 | 122 | 4-3/8 | 111 | 3-3/4 | 95 | 1/2 | 15 | 3/8 | 10 | 6.25 | 2.8 | 4.25 | 1.9 |
| 2 | 50 | 6-5/8 | 168 | 5-3/8 | 137 | 5-1/2 | 140 | 4-3/8 | 111 | 3/4 | 20 | 1/2 | 15 | 11.00 | 5.0 | 6.25 | 2.8 |
| 2-1/2 | 65 | 8-1/4 | 210 | 6-5/8 | 168 | 6-3/4 | 171 | 5-1/2 | 140 | 1-1/4 | 32 | 3/4 | 20 | 17.75 | 8.1 | 11.00 | 5.0 |
| 3 | 80 | 9-5/8 | 244 | 8-1/4 | 210 | 7-1/8 | 181 | 6-3/4 | 171 | 1-1/2 | 40 | 1-1/4 | 32 | 25.75 | 11.7 | 17.75 | 8.1 |

Certified dimensional drawings are available upon request.

[†]This table reflects only the nearest metric equivalents.

FLOW COEFFICIENTS

| Size | C _v | Size | C _v | Size | C _v |
|------|----------------|--------|----------------|--|----------------|
| 1/4" | 9.5 | 1" | 30 | 2-1/2" | 129.7 |
| 3/8" | 9.5 | 1-1/4" | 44.9 | 3" | 161.3 |
| 1/2" | 9.5 | 1-1/2" | 61 | (The flow coefficients listed are for Style F-300) | |
| 3/4" | 18.7 | 2" | 98 | | |

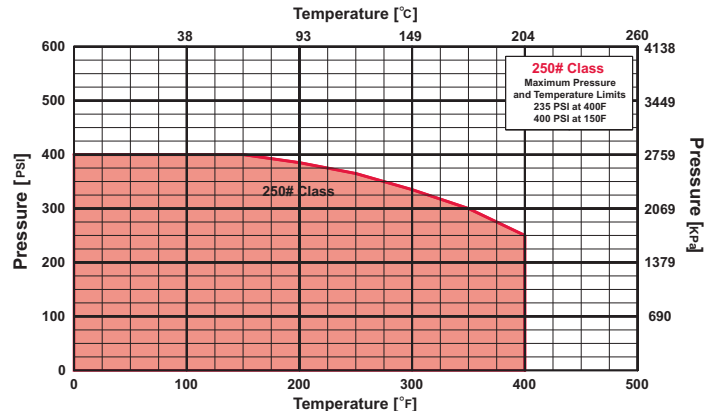
TOTAL SCREEN AREA

| Size | (in ²) | Size | (in ²) | Size | (in ²) |
|------|--------------------|--------|--------------------|--|--------------------|
| 1/4" | 2.36 | 1" | 9.54 | 2-1/2" | 45.09 |
| 3/8" | 2.36 | 1-1/4" | 14.11 | 3" | 56.56 |
| 1/2" | 3.44 | 1-1/2" | 19.88 | (Total screen area listed are for Style F-300) | |
| 3/4" | 5.67 | 2" | 32.97 | | |

*See DETERMINING RATIOS on page S5 of the Strainer Information Section for calculating NET FREE AREA of the screen to inside pipe area.

PRESSURE vs. TEMPERATURE CHART

250# Threaded & Solder Joint Cast Bronze (ASTM B 62, C83600)



*In Accordance with ASME B16.15

Style BA

Y-Strainer

Cast Bronze (ASTM B 62, C83600)

150 lb. & 300 lb. Flanged



Cast Bronze Y-Strainer

APPLICATIONS

Steam, water, oil or gas where protection from foreign matter in a pipeline is required.

CONSTRUCTION

The Keckley Style BA strainers are constructed from the finest bronze castings and are machined to exacting specifications. These bodies have drilled flanges that are in accordance with ASME B16.24.

FEATURES

The Keckley Style BA strainer features a machined groove in both the body and cover for proper alignment and to ensure accurate reseating when servicing is required. The gasket is a flexible laminated sheet that is compressed between the body and cover for maximum strength and durability. All Keckley Style BA strainers can be supplied with a brass blow-off plug upon request.

SCREENS

Standard perforated brass screens are spot welded along the seam for maximum strength. Different size perforations and meshes are available in stainless steel, monel, and brass to meet specific media requirements. If media is not indicated, screens for *water* will be supplied.

SELF CLEANING

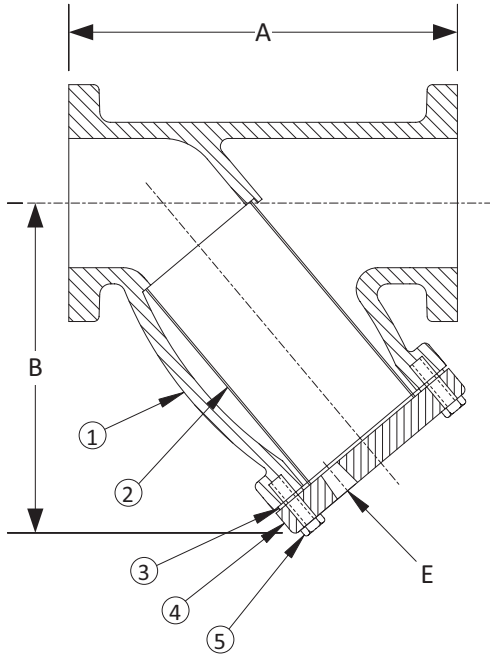
Self cleaning is accomplished by opening the valve or drain plug connected to the blow-off port. **Warning:** See Maintenance Instructions on page **S6** of the Strainer Information Section for additional precautions and detailed information on servicing the strainer.

WORKING PRESSURES - NON SHOCK

| NOM. RATING | MEDIA | 2" to 6" | 50 mm to 150 mm |
|--------------------------------------|--------|-----------------|------------------|
| 150# F.F. & D. (STANDARD FLANGE) | STEAM | 150 PSI @ 406°F | 1035 KPa @ 208°C |
| | W.O.G. | 225 PSI @ 150°F | 1552 KPa @ 66°C |
| NOM. RATING | MEDIA | 2" to 6" | 50 mm to 150 mm |
| 300# F.F. & D. (EX. HEAVY FLANGE) | STEAM | 300 PSI @ 406°F | 2069 KPa @ 208°C |
| | W.O.G. | 500 PSI @ 150°F | 3449 KPa @ 66°C |

Style BA

Y-Strainer, 150 lb. & 300 lb. Flanged
Cast Bronze (ASTM B 62, C83600)



PARTS LIST

| ITEM | DESCRIPTION | MATERIAL |
|------|---------------------|---------------------------------|
| 1 | Body | Cast Bronze (ASTM B 62, C83600) |
| 2 | Screen | Brass |
| 3 | Gasket | Composition |
| 4 | Cover | Cast Bronze (ASTM B 62, C83600) |
| 5 | Hex Head Cap Screws | Steel |

Optional: Blow-off Plug, Brass.

STANDARD SCREENS SUPPLIED

| SIZE | | | SCREEN PERFORATION | | | | | |
|--------|-----------|----|--------------------|-----|-----------|-------------|-----|-----------|
| | | | FOR STEAM | | OPEN AREA | FOR LIQ-UID | | OPEN AREA |
| in | mm | | in | mm | | in | mm | |
| 2 to 4 | 50 to 100 | 28 | 3/64 | 1.2 | 33% | 1/16 | 1.6 | 30% |

Standard screens supplied are for **liquid service**, unless otherwise specified.
Options: Other perforations, meshes, and screen materials are available.

| SIZE | | DIMENSIONS | | | | | | | | WEIGHTS | | | |
|-------|-----|------------|-----|----------|-----|-------------|-----|-------------|----|---------|-----|------|-----|
| | | A | | | | B | | E | | | | | |
| | | 150# | | 300# | | 150# & 300# | | 150# & 300# | | 150# | | 300# | |
| in | mm | in | mm | in | mm | in | mm | in | mm | lbs | kgs | lbs | kgs |
| 2 | 50 | 8-1/8 | 206 | 8-5/8 | 219 | 8-1/4 | 210 | 1-1/4 | 32 | 34 | 15 | 39 | 18 |
| 2-1/2 | 65 | 9-5/8 | 244 | 10-1/8 | 257 | 8-1/2 | 216 | 1-1/4 | 32 | 40 | 18 | 57 | 26 |
| 3 | 80 | 10-3/8 | 264 | 10-15/16 | 278 | 8-1/2 | 216 | 1-1/4 | 32 | 51 | 23 | 74 | 34 |
| 4 | 100 | 14-7/8 | 378 | 15-1/4 | 387 | 12-1/2 | 318 | 2 | 50 | 109 | 49 | 149 | 68 |
| 5 | 125 | 16 | 406 | 16-3/4 | 425 | 14-1/2 | 368 | 2 | 50 | 161 | 73 | 221 | 100 |
| 6 | 150 | 18-9/16 | 471 | 18-1/8 | 460 | 15 | 381 | 2 | 50 | 198 | 88 | 253 | 115 |

Certified dimensional drawings are available upon request.

[†]This table reflects only the nearest metric equivalents.

FLOW COEFFICIENTS

| Size | C _v | Size | C _v | Size | C _v |
|--------|----------------|------|----------------|------|----------------|
| 2" | 62 | 3" | 155 | 5" | 364 |
| 2-1/2" | 98 | 4" | 269 | 6" | 585 |

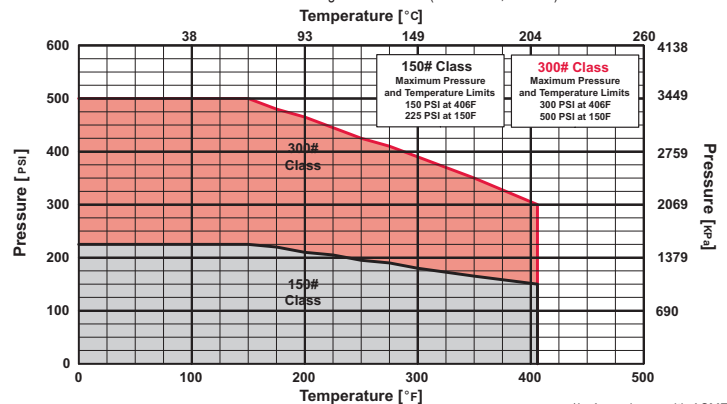
TOTAL SCREEN AREA

| Size | (in ²) | Size | (in ²) | Size | (in ²) |
|--------|--------------------|------|--------------------|------|--------------------|
| 2" | 51.55 | 3" | 85.86 | 5" | 219.79 |
| 2-1/2" | 70.01 | 4" | 154.98 | 6" | 245.08 |

*See DETERMINING RATIOS on page S5 of the Strainer Information Section for calculating NET FREE AREA of the screen to inside pipe area.

PRESSURE vs. TEMPERATURE CHART

150# & 300# Flanged Cast Bronze (ASTM B 62, C83600)



*In Accordance with ASME B16.24

Style BA-7

Y-Strainer

Nickel Aluminum Bronze
(ASTM B 148, C95800)

150 lb. & 300 lb. Flanged



Cast Nickel Aluminum Bronze Y-Strainer

APPLICATIONS

Steam, water, oil or gas where protection from foreign matter in a pipeline is required.

CONSTRUCTION

The Keckley Style BA-7 strainers are constructed from rugged nickel aluminum bronze castings and are machined to exacting specifications. These bodies have drilled flanges that are in accordance with ASME B16.24. All flanges come standard with back-faced bolt holes.

FEATURES

The Keckley Style BA-7 strainer features a machined groove in both the body and cover for proper screen alignment and to ensure accurate reseating when servicing is required. The gasket is spiral wound 316 stainless steel and is compressed between the body and cover (for maximum strength and durability) and designed for high pressure and high temperature service. All Keckley Style BA-7 strainers have cap screws and can be furnished with a brass blow-off plug upon request.

SCREENS

Standard perforated 304 stainless steel screens are spot welded along the seam for maximum strength. Different size perforations and meshes are available in stainless steel, monel, and brass to meet specific media requirements. If media is not indicated, screens for *water* will be supplied.

SELF CLEANING

Self cleaning is accomplished by opening the valve or drain plug connected to the blow-off port. **Warning:** See Maintenance Instructions on page **S6** of the Strainer Information Section for additional precautions and detailed information on servicing the strainer.

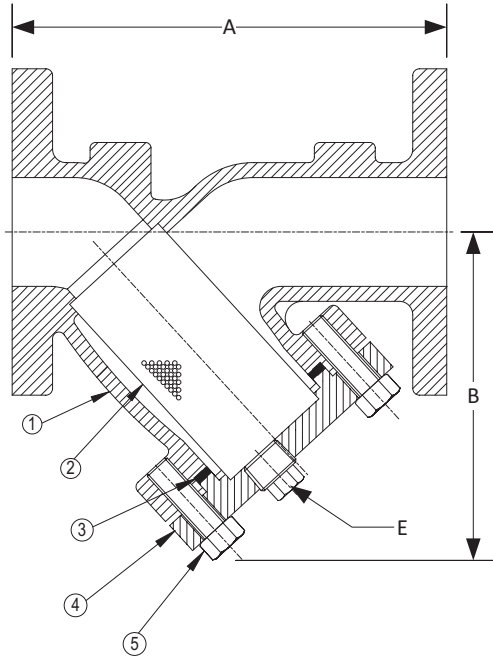
WORKING PRESSURES - NON SHOCK

| NOM. RATING | MEDIA | 1/2" to 12" | 15 mm to 300 mm |
|--------------------------------------|--------|-----------------|------------------|
| 150# F.F. & D. (STANDARD FLANGE) | STEAM | 150 PSI @ 225°F | 1034 KPa @ 107°C |
| | W.O.G. | 195 PSI @ 100°F | 1344 KPa @ 38°C |
| NOM. RATING | MEDIA | 1/2" to 12" | 15 mm to 300 mm |
| 300# F.F. & D. (EX. HEAVY FLANGE) | STEAM | 360 PSI @ 500°F | 2482 KPa @ 260°C |
| | W.O.G. | 515 PSI @ 100°F | 3551 KPa @ 38°C |

Style BA-7

Y-Strainer, 150 lb. & 300 lb. Flanged

Cast Nickel Aluminum Bronze (ASTM B 148, C95800)



PARTS LIST

| ITEM | DESCRIPTION | MATERIAL |
|------|-------------|---|
| 1 | Body | Nickel Aluminum Bronze (ASTM B 148, C95800) |
| 2 | Screen | Stainless Steel (304) |
| 3 | Gasket | Spiral Wound Stainless Steel (304) |
| 4 | Cover | Nickel Aluminum Bronze (ASTM B 148, C95800) |
| 5 | Cap Screw | Stainless Steel (ASTM A 193, Grade B8) |

Optional: Blow-off Plug, Brass.

STANDARD SCREENS SUPPLIED

| SIZE | | SCREEN GAGE | SCREEN PERFORATION | | | |
|----------|------------|-------------|--------------------|-----------|------------|-----------|
| | | | FOR STEAM | OPEN AREA | FOR LIQUID | OPEN AREA |
| in | mm | | in | mm | in | mm |
| 1/2 to 4 | 15 to 100 | 28 | 3/64 | 1.2 | 33% | 1/16 |
| 5 to 10 | 125 to 250 | 22 | 3/64 | 1.2 | 33% | 1/8 |
| 12 | 300 | 22 | 1/16 | 1.6 | 30% | 1/8 |

Standard screens supplied are for **liquid service**, unless otherwise specified.

Options: Other perforations, meshes, and screen materials are available.

| SIZE | | DIMENSIONS | | | | | | | | | | WEIGHTS | | | |
|-------|-----|------------|-----|---------|-----|--------|-----|---------|-----|-------------|----|---------|--------|------|------|
| | | A | | | | B | | | | E | | | | | |
| | | 150# | | 300# | | 150# | | 300# | | 150# & 300# | | 150# | | 300# | |
| in | mm | in | mm | in | mm | in | mm | in | mm | in | mm | lbs | kgs | lbs | kgs |
| 1/2 | 15 | 5-7/8 | 149 | 6 | 152 | 3-1/4 | 83 | 3-1/4 | 83 | 3/8 | 10 | 7 | 3.18 | 12 | 5.4 |
| 3/4 | 20 | 7-3/8 | 187 | 7-13/16 | 198 | 3-3/4 | 95 | 3-3/4 | 95 | 1/2 | 15 | 11 | 4.99 | 18 | 8.1 |
| 1 | 25 | 7-3/8 | 187 | 7-13/16 | 198 | 4-5/16 | 110 | 3-5/8 | 92 | 1/2 | 15 | 11 | 4.99 | 18 | 8.1 |
| 1-1/4 | 32 | 6-5/8 | 168 | 8 | 203 | 4-5/16 | 110 | 4-1/2 | 114 | 1/2 | 15 | 12 | 5.44 | 26 | 11 |
| 1-1/2 | 40 | 6-11/16 | 170 | 8-1/8 | 206 | 4-5/16 | 110 | 4-3/4 | 121 | 1/2 | 15 | 14 | 6.00 | 26 | 11 |
| 2 | 50 | 7-7/8 | 200 | 9 | 229 | 5-1/4 | 133 | 6 | 152 | 1/2 | 15 | 18 | 8.16 | 28 | 12.7 |
| 2-1/2 | 65 | 9-3/4 | 248 | 10-5/8 | 270 | 6-1/2 | 165 | 7-3/8 | 187 | 1 | 20 | 37 | 16.34 | 48 | 21 |
| 3 | 80 | 10 | 254 | 12-1/2 | 318 | 7 | 178 | 9-1/16 | 230 | 1-1/4 | 32 | 40 | 18.06 | 75 | 34 |
| 4 | 100 | 12-1/8 | 308 | 15-1/8 | 384 | 8-1/4 | 210 | 10-7/8 | 276 | 1-1/2 | 40 | 67 | 30.20 | 110 | 50 |
| 5 | 125 | 15-1/2 | 394 | 18-5/8 | 479 | 11-1/4 | 286 | 13-9/16 | 344 | 2 | 50 | 99 | 44.52 | 164 | 74 |
| 6 | 150 | 18-1/2 | 470 | 19-1/8 | 486 | 13-1/2 | 343 | 15-7/8 | 403 | 2 | 50 | 134 | 60.48 | 212 | 96 |
| 8 | 200 | 24 | 610 | 25-3/16 | 640 | 16-1/2 | 413 | 16-1/2 | 413 | 2 | 50 | 229 | 103.45 | 359 | 163 |
| 10 | 250 | 27-5/8 | 702 | 29-1/8 | 740 | 19-3/8 | 492 | 19-3/8 | 492 | 2 | 50 | 397 | 180.03 | 493 | 224 |
| 12 | 300 | 32-1/2 | 826 | 34 | 864 | 22-5/8 | 575 | 22-5/8 | 575 | 2 | 50 | 532 | 240.89 | 938 | 425 |

Larger sizes available upon request.

Certified dimensional drawings are available upon request.

*This table reflects only the nearest metric equivalents.

TOTAL SCREEN AREA

| Size | (in ²) | Size | (in ²) | Size | (in ²) | Size | (in ²) |
|--------|--------------------|--------|--------------------|------|--------------------|---|--------------------|
| 1/2" | -- | 1-1/2" | 18.66 | 4" | 88.15 | 10" | 564.46 |
| 3/4" | -- | 2" | 26.90 | 5" | 159.01 | 12" | 665.70 |
| 1" | -- | 2-1/2" | 46.88 | 6" | 235.95 | (Total screen area listed for 150 lb. class only) | |
| 1-1/4" | -- | 3" | 59.16 | 8" | 360.05 | | |

*See DETERMINING RATIOS on page S5 of the Strainer Information

Section for calculating NET FREE AREA of the screen to inside pipe area.

Style SB-7

Y-Strainer

Carbon Steel (ASTM A 216, Grade WCB)

600 lb. Threaded

600 lb. Socket Weld



Cast Carbon Steel Y-Strainer

APPLICATIONS

Steam, water, oil or gas where protection from foreign matter in a pipeline is required.

CONSTRUCTION

The Keckley Style SB-7 strainers are constructed from rugged carbon steel castings that are machined to exacting specifications.

Socket Weld bore is in compliance with ASME B16.11 unless otherwise specified.

FEATURES

The Keckley Style SB-7 strainer features a machined groove in the body and cap for proper alignment and to ensure accurate reseating when servicing is required. This strainer has a straight threaded cap and is furnished standard with a NPT blow-off connection. The gasket is 304 stainless steel spiral wound and is compressed between the body and cap (for maximum strength and durability) and designed for both high pressure and high temperature service. Keckley Style SB-7 strainers can be supplied with a carbon steel blow-off plug upon request.

SCREENS

Standard perforated 304 stainless steel screens are spot welded along the seam for maximum strength. Different size perforations and meshes are available in stainless steel, monel, and brass to meet specific media requirements. If media is not indicated, screens for *steam* will be supplied.

SELF CLEANING

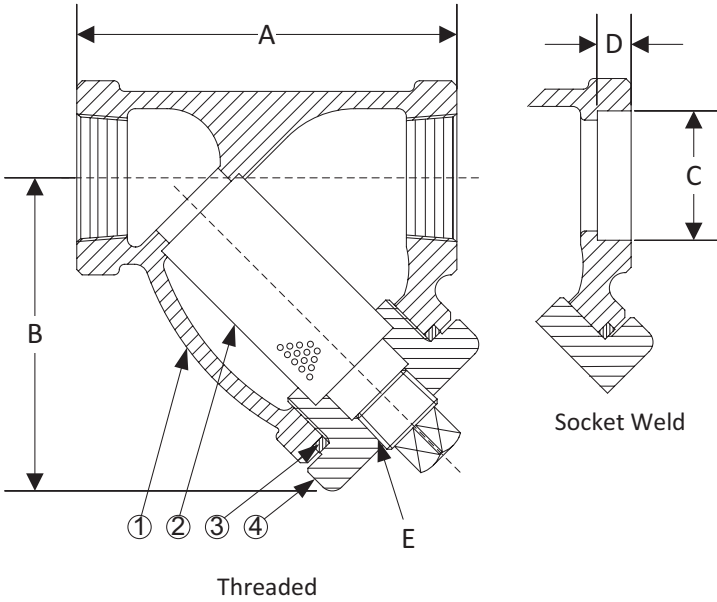
Self cleaning is accomplished by opening the valve or drain plug connected to the blow-off port. **Warning:** See Maintenance Instructions on page **S6** of the Strainer Information Section for additional precautions and detailed information on servicing the strainer.

WORKING PRESSURES - NON SHOCK

| NOM. RATING | MEDIA | 1/4" to 3" | 8 mm to 80 mm |
|-------------------------------|--------|------------------|------------------|
| 600# (THREADED & SOCKET WELD) | STEAM | 600 PSI @ 838°F | 4138 KPa @ 448°C |
| | W.O.G. | 1480 PSI @ 100°F | 10208 KPa @ 38°C |

Style SB-7

Y-Strainer, 600 lb. Threaded & Socket Weld Carbon Steel (ASTM A 216, Grade WCB)



PARTS LIST

| ITEM | DESCRIPTION | MATERIAL |
|------|-------------|--------------------------------------|
| 1 | Body | Carbon Steel (ASTM A 216, Grade WCB) |
| 2 | Screen | Stainless Steel (304) |
| 3 | Gasket | Spiral Wound Stainless Steel (304) |
| 4 | Cap | Carbon Steel (ASTM A 216, Grade WCB) |

Optional: Blow-off Plug, Carbon Steel (ASTM A 105).

*Optional Body Materials Available in LCB, WC6, and WC9.

STANDARD SCREENS SUPPLIED

| SIZE | | SCREEN PERFORATION | | | |
|------|----|--------------------|-----------|-------------|-----------|
| | | FOR STEAM | OPEN AREA | FOR LIQ-UID | OPEN AREA |
| in | mm | in | mm | in | mm |

Standard screens supplied are for **steam service**, unless otherwise specified.
Options: Other perforations, meshes, and screen materials are available.

| SIZE | | DIMENSIONS | | | | | | | | | | WEIGHTS | |
|-------|----|------------|-----|---------|-----|-------|----|-----|----|-------|----|---------|-------|
| | | A | | B | | C | | D | | E | | | |
| in | mm | in | mm | in | mm | in | mm | in | mm | in | mm | lbs | kgs |
| 1/4 | 8 | 2-15/16 | 75 | 2-7/16 | 62 | 0.555 | 14 | 3/8 | 10 | 1/4 | 8 | 2 | 0.76 |
| 3/8 | 10 | 2-15/16 | 75 | 2-7/16 | 62 | 0.690 | 18 | 3/8 | 10 | 1/4 | 8 | 2 | 0.76 |
| 1/2 | 15 | 2-15/16 | 75 | 2-7/16 | 62 | 0.855 | 22 | 3/8 | 10 | 1/4 | 8 | 2 | 0.76 |
| 3/4 | 20 | 3-11/16 | 94 | 3 | 76 | 1.065 | 27 | 1/2 | 13 | 3/8 | 10 | 3 | 1.21 |
| 1 | 22 | 4-9/16 | 116 | 4-5/16 | 110 | 1.330 | 34 | 1/2 | 13 | 3/8 | 10 | 6 | 2.33 |
| 1-1/4 | 32 | 4-15/16 | 125 | 4-3/16 | 106 | 1.675 | 43 | 1/2 | 13 | 3/4 | 20 | 7 | 3.02 |
| 1-1/2 | 40 | 5-9/16 | 141 | 4-11/16 | 119 | 1.915 | 49 | 1/2 | 13 | 3/4 | 20 | 9 | 3.98 |
| 2 | 50 | 6-15/16 | 176 | 6-1/4 | 159 | 2.406 | 61 | 5/8 | 16 | 1 | 25 | 15 | 6.80 |
| 2-1/2 | 65 | 12 | 305 | 9-3/8 | 238 | 2.906 | 74 | 5/8 | 16 | 1-1/4 | 32 | 34 | 15.03 |
| 3 | 80 | 12 | 305 | 9-3/8 | 238 | 3.535 | 90 | 5/8 | 16 | 1-1/4 | 32 | 36 | 15.97 |

Certified dimensional drawings are available upon request.

[†]This table reflects only the nearest metric equivalents.

FLOW COEFFICIENTS

| Size | C _v | Size | C _v | Size | C _v |
|------|----------------|--------|----------------|--------|----------------|
| 1/4" | 9.5 | 1" | 30 | 2-1/2" | 129.7 |
| 3/8" | 9.5 | 1-1/4" | 44.9 | 3" | 161.3 |
| 1/2" | 9.5 | 1-1/2" | 61 | | |
| 3/4" | 18.7 | 2" | 98 | | |

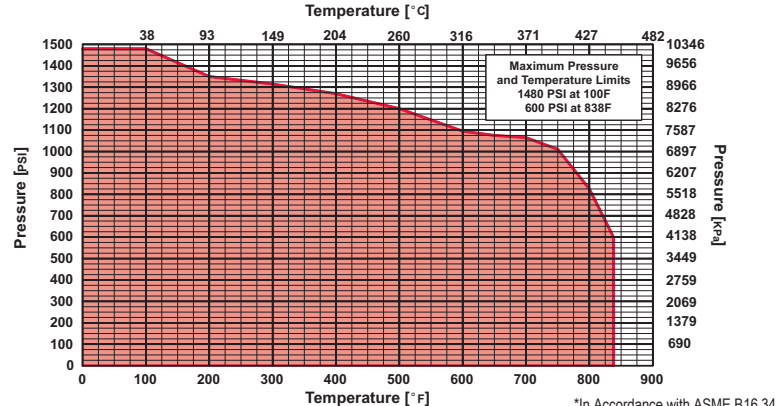
TOTAL SCREEN AREA

| Size | (in ²) | Size | (in ²) | Size | (in ²) |
|------|--------------------|--------|--------------------|--------|--------------------|
| 1/4" | 2.75 | 1" | 10.08 | 2-1/2" | 78.14 |
| 3/8" | 2.75 | 1-1/4" | 12.79 | 3" | 78.14 |
| 1/2" | 2.75 | 1-1/2" | 16.33 | | |
| 3/4" | 4.71 | 2" | 27.04 | | |

*See DETERMINING RATIOS on page S5 of the Strainer Information Section for calculating NET FREE AREA of the screen to inside pipe area.

PRESSURE vs. TEMPERATURE CHART

600# Threaded & Socket Weld Carbon Steel (ASTM A 216, Grade WCB)



Style SB-7BC

Y-Strainer

Carbon Steel (ASTM A 216, Grade WCB)

600 lb. Threaded Bolted Cover

600 lb. Socket Weld Bolted Cover



Cast Carbon Steel Y-Strainer

APPLICATIONS

Steam, water, oil or gas where protection from foreign matter in a pipeline is required.

CONSTRUCTION

The Keckley Style SB-7BC strainers are constructed from rugged carbon steel castings that are machined to exacting specifications.

Socket Weld bore is in compliance with ASME B16.11 unless otherwise specified.

FEATURES

The Keckley Style SB-7BC strainer features a machined groove in the body and cap for proper alignment and to ensure accurate reseating when servicing is required. This strainer has a bolted cover and is furnished standard with a NPT blow-off connection. The gasket is 304 stainless steel spiral wound and is compressed between the body and cover (for maximum strength and durability) and designed for both high pressure and high temperature service. Keckley Style SB-7BC strainers can be supplied with a carbon steel blow-off plug upon request.

SCREENS

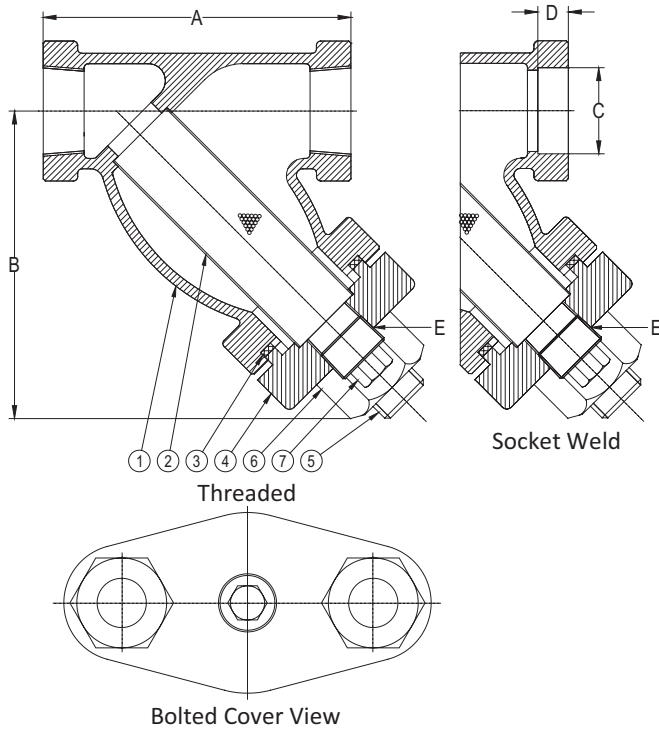
Standard perforated 304 stainless steel screens are spot welded along the seam for maximum strength. Different size perforations and meshes are available in stainless steel, monel, and brass to meet specific media requirements. If media is not indicated, screens for *steam* will be supplied.

SELF CLEANING

Self cleaning is accomplished by opening the valve or drain plug connected to the blow-off port. **Warning:** See Maintenance Instructions on page S6 of the Strainer Information Section for additional precautions and detailed information on servicing the strainer.

WORKING PRESSURES - NON SHOCK

| NOM. RATING | MEDIA | 1/4" to 3" | 8 mm to 80 mm |
|-------------------------------|--------|------------------|------------------|
| 600# (THREADED & SOCKET WELD) | STEAM | 600 PSI @ 838°F | 4138 KPa @ 448°C |
| | W.O.G. | 1480 PSI @ 100°F | 10208 KPa @ 38°C |



Style SB-7BC

Y-Strainer, 600 lb. Threaded & Socket Weld
Bolted Cover

Carbon Steel (ASTM A 216, Grade WCB)

PARTS LIST

| ITEM | DESCRIPTION | MATERIAL |
|------|-------------|--------------------------------------|
| 1 | Body | Carbon Steel (ASTM A 216, Grade WCB) |
| 2 | Screen | Stainless Steel (304) |
| 3 | Gasket | Spiral Wound Stainless Steel (304) |
| 4 | Cap | Carbon Steel (ASTM A 216, Grade WCB) |
| 5 | Stud | Carbon Steel (ASTM A 193, Grade B7) |
| 6 | Nut | Carbon Steel (ASTM A 194, Grade 2H) |
| 7 | Plug | Carbon Steel (ASTM A 105) |

*Optional Body Materials Available in LCB, WC6, and WC9.

STANDARD SCREENS SUPPLIED

| SIZE | | SCREEN PERFORATION | | | |
|------|----|--------------------|-----------|-------------|-----------|
| | | FOR STEAM | OPEN AREA | FOR LIQ-UID | OPEN AREA |
| in | mm | in | mm | in | mm |

Standard screens supplied are for **steam service**, unless otherwise specified.
Options: Other perforations, meshes, and screen materials are available.

| SIZE | | DIMENSIONS | | | | | | | | | | WEIGHTS | |
|-------|----|------------|-----|-------|-----|-------|----|-----|----|-------|----|---------|-------|
| | | A | | B | | C | | D | | E | | | |
| in | mm | in | mm | in | mm | in | mm | in | mm | in | mm | lbs | kgs |
| 1/4 | 8 | 3 | 76 | 2-1/2 | 63 | 0.555 | 14 | 3/8 | 10 | 1/4 | 8 | 3 | 1.14 |
| 3/8 | 10 | 3 | 76 | 2-1/2 | 63 | 0.690 | 18 | 3/8 | 10 | 1/4 | 8 | 3 | 1.14 |
| 1/2 | 15 | 3-7/8 | 99 | 3-1/4 | 83 | 0.855 | 22 | 3/8 | 10 | 1/4 | 8 | 3 | 1.14 |
| 3/4 | 20 | 4-1/4 | 108 | 4-1/4 | 108 | 1.065 | 27 | 1/2 | 13 | 3/8 | 10 | 3 | 1.32 |
| 1 | 22 | 4-15/16 | 125 | 4-5/8 | 117 | 1.330 | 34 | 1/2 | 13 | 1/2 | 15 | 6 | 2.33 |
| 1-1/4 | 32 | 5-5/8 | 143 | 5-1/2 | 140 | 1.675 | 43 | 1/2 | 13 | 3/4 | 20 | 10 | 4.30 |
| 1-1/2 | 40 | 6-1/4 | 159 | 6-1/4 | 159 | 1.915 | 49 | 1/2 | 13 | 3/4 | 20 | 12 | 5.43 |
| 2 | 50 | 7-1/2 | 191 | 7-1/4 | 184 | 2.406 | 61 | 5/8 | 16 | 1 | 25 | 18 | 7.74 |
| 2-1/2 | 65 | 12 | 305 | 9-3/8 | 238 | 2.906 | 74 | 5/8 | 16 | 1-1/4 | 32 | 49 | 22.00 |
| 3 | 80 | 12 | 305 | 9-3/8 | 238 | 3.535 | 90 | 5/8 | 16 | 1-1/4 | 32 | 49 | 22.00 |

Certified dimensional drawings are available upon request.

[†]This table reflects only the nearest metric equivalents.

FLOW COEFFICIENTS

| Size | C _v | Size | C _v | Size | C _v |
|------|----------------|--------|----------------|--------|----------------|
| 1/4" | 9.5 | 1" | 30 | 2-1/2" | 129.7 |
| 3/8" | 9.5 | 1-1/4" | 44.9 | 3" | 161.3 |
| 1/2" | 9.5 | 1-1/2" | 61 | | |
| 3/4" | 18.7 | 2" | 98 | | |

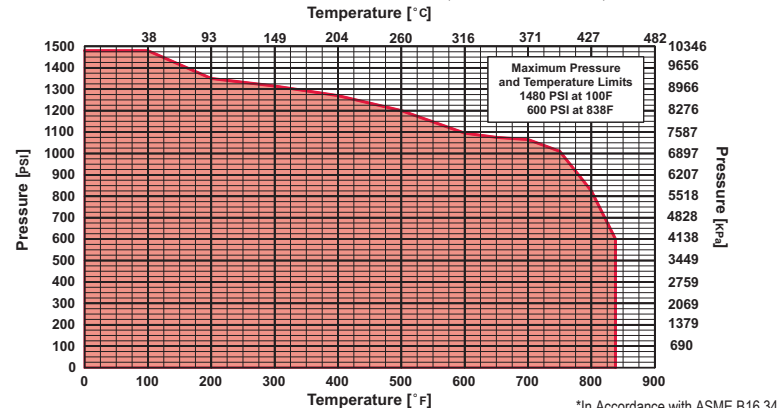
TOTAL SCREEN AREA

| Size | (in ²) | Size | (in ²) | Size | (in ²) |
|------|--------------------|--------|--------------------|--------|--------------------|
| 1/4" | 4.36 | 1" | 13.84 | 2-1/2" | 69.82 |
| 3/8" | 4.36 | 1-1/4" | 20.83 | 3" | 69.82 |
| 1/2" | 4.36 | 1-1/2" | 24.02 | | |
| 3/4" | 9.37 | 2" | 35.48 | | |

*See DETERMINING RATIOS on page S5 of the Strainer Information Section for calculating NET FREE AREA of the screen to inside pipe area.

PRESSURE vs. TEMPERATURE CHART

600# Threaded & Socket Weld Carbon Steel (ASTM A 216, Grade WCB)



Style SB

Cast Carbon Steel Y-Strainer

Y-Strainer

Carbon Steel (ASTM A 216, Grade WCB)

1500 lb. Threaded

1500 lb. Socket Weld



APPLICATIONS

Steam, water, oil or gas where protection from foreign matter in a pipeline is required.

CONSTRUCTION

The Keckley Style SB strainers are constructed from rugged carbon steel castings that are machined to exacting specifications.

Socket Weld bore is in compliance with ASME B16.11 unless otherwise specified.

FEATURES

The Keckley Style SB strainer features a machined groove in the body and cap for proper alignment and to ensure accurate reseating when servicing is required. The gasket is 304 stainless steel spiral wound and is compressed between the body and cover (for maximum strength and durability) and designed for both high pressure and high temperature service. The cover is not supplied with a blow-off hole.

SCREENS

Standard perforated 304 stainless steel screens are spot welded along the seam for maximum strength. Different size perforations and meshes are available in stainless steel, monel, and brass to meet specific media requirements. If media is not indicated, screens for *steam* will be supplied.

SELF CLEANING

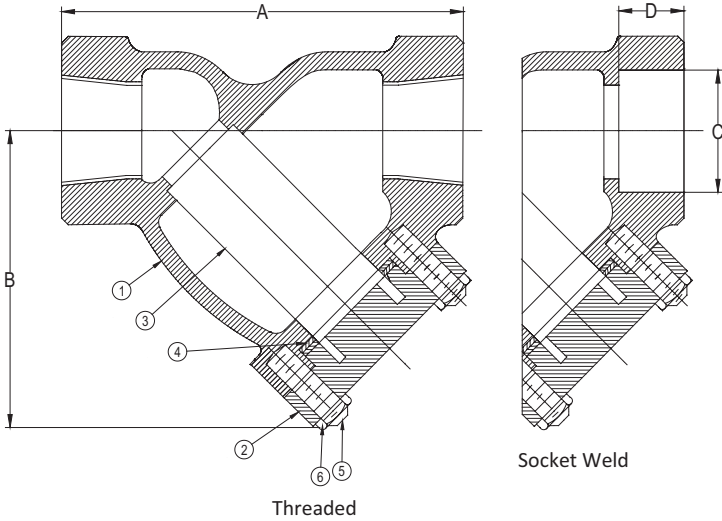
Warning: See Maintenance Instructions on page **S6** of the Strainer Information Section for additional precautions and detailed information on servicing the strainer.

WORKING PRESSURES - NON SHOCK

| NOM. RATING | MEDIA | 1/2" to 3" | 15 mm to 80 mm |
|--------------------------------|--------|------------------|-------------------|
| 1500# (THREADED & SOCKET WELD) | STEAM | 1500 PSI @ 838°F | 10346 KPa @ 448°C |
| | W.O.G. | 3705 PSI @ 100°F | 25553 KPa @ 38°C |

Style SB

Y-Strainer, 1500 lb. Threaded & Socket Weld
Carbon Steel (ASTM A 216, Grade WCB)



PARTS LIST

| ITEM | DESCRIPTION | MATERIAL |
|------|-------------|--------------------------------------|
| 1* | Body | Carbon Steel (ASTM A 216, Grade WCB) |
| 2 | Cover | Carbon Steel (ASTM A 216, Grade WCB) |
| 3 | Screen | Stainless Steel (304) |
| 4 | Gasket | Spiral Wound Stainless Steel (304) |
| 5 | Studs | Carbon Steel (ASTM A 193, Grade B16) |
| 6 | Nuts | Carbon Steel (ASTM A 194, Grade 4) |

*Optional Body Materials Available in LCB, WC6, and WC9.

STANDARD SCREENS SUPPLIED

| SIZE | | SCREEN PERFORATION | | | |
|------|----|--------------------|-----------|-------------|-----------|
| | | FOR STEAM | OPEN AREA | FOR LIQ-UID | OPEN AREA |
| in | mm | in | mm | in | mm |

Standard screens supplied are for **steam service**, unless otherwise specified.
Options: Other perforations, meshes, and screen materials are available.

| SIZE | | DIMENSIONS | | | | | | | | WEIGHTS | |
|-------|----|------------|-----|--------|-----|-------|----|-----|----|---------|-----|
| | | A | | B | | C | | D | | | |
| in | mm | in | mm | in | mm | in | mm | in | mm | lbs | kgs |
| 1/2 | 15 | 3-15/16 | 100 | 3 | 76 | 0.855 | 22 | 3/8 | 10 | 10 | 5 |
| 3/4 | 20 | 4-1/4 | 108 | 3-3/4 | 95 | 1.065 | 27 | 1/2 | 13 | 12 | 5 |
| 1 | 25 | 5 | 127 | 5 | 127 | 1.330 | 34 | 1/2 | 13 | 15 | 7 |
| 1-1/4 | 32 | 8-3/8 | 213 | 5-1/2 | 140 | 1.675 | 43 | 1/2 | 13 | 22 | 10 |
| 1-1/2 | 40 | 8-3/8 | 213 | 5-1/2 | 140 | 1.915 | 49 | 1/2 | 13 | 22 | 10 |
| 2 | 50 | 9-5/16 | 237 | 7-3/8 | 187 | 2.406 | 61 | 5/8 | 16 | 30 | 14 |
| 2-1/2 | 65 | 12 | 305 | 10-1/2 | 267 | 2.906 | 74 | 5/8 | 16 | 50 | 23 |
| 3 | 80 | 12 | 305 | 10-1/2 | 267 | 3.535 | 90 | 5/8 | 16 | 50 | 23 |

Certified dimensional drawings are available upon request.

†This table reflects only the nearest metric equivalents.

FLOW COEFFICIENTS

| Size | C _v | Size | C _v | Size | C _v |
|------|----------------|--------|----------------|--------|----------------|
| 1/2" | 9 | 1-1/4" | 45 | 2-1/2" | 129 |
| 3/4" | 18 | 1-1/2" | 60 | 3" | 170 |
| 1" | 30 | 2" | 98 | | |

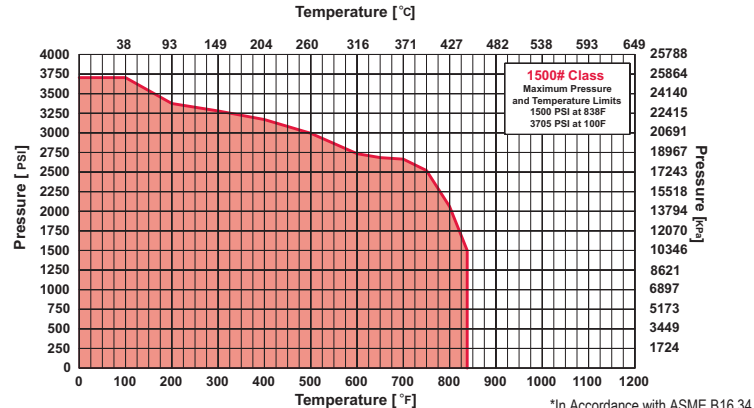
TOTAL SCREEN AREA

| Size | (in ²) | Size | (in ²) | Size | (in ²) |
|------|--------------------|--------|--------------------|--------|--------------------|
| 1/2" | 5.97 | 1-1/4" | 27.94 | 2-1/2" | 77.80 |
| 3/4" | 9.73 | 1-1/2" | 27.94 | 3" | 79.48 |
| 1" | 17.55 | 2" | 38.08 | | |

*See DETERMINING RATIOS on page S5 of the Strainer Information Section for calculating NET FREE AREA of the screen to inside pipe area.

PRESSURE vs. TEMPERATURE CHART

1500# Threaded & Socket Weld Carbon Steel (ASTM A 216, Grade WCB)



Style SA-7

Y-Strainer

Carbon Steel (ASTM A 216, Grade WCB)

150 lb. & 300 lb. Flanged



Cast Carbon Steel Y-Strainer

APPLICATIONS

Steam, water, oil or gas where protection from foreign matter in a pipeline is required.

CONSTRUCTION

The Keckley Style SA-7 strainers are constructed from rugged carbon steel castings and are machined to exacting specifications. These bodies have drilled flanges that are in accordance with ASME B16.5. All flanges come standard with back-faced bolt holes.

FEATURES

The Keckley Style SA-7 strainer features a machined groove in both the body and cover for proper screen alignment and to ensure accurate reseating when servicing is required. The gasket is 304 stainless steel spiral wound and is compressed between the body and cover (for maximum strength and durability) and designed for high pressure and high temperature service. All Keckley Style SA-7 strainers have cap screws and can be furnished with a steel blow-off plug upon request.

Blind covers are available upon request.

SCREENS

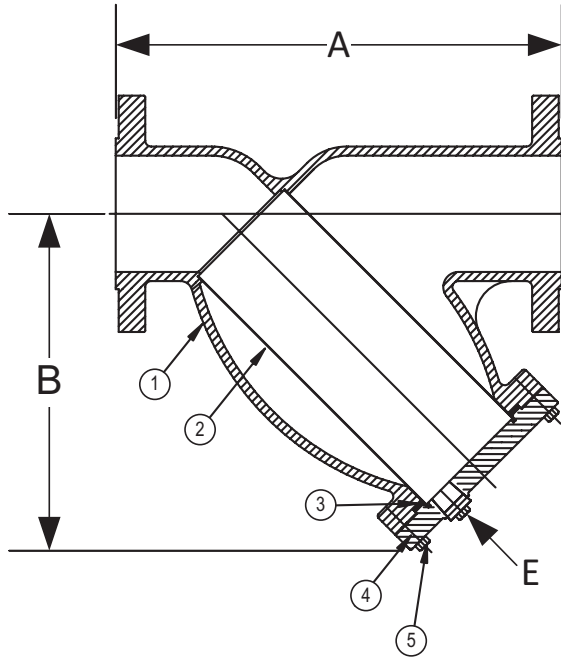
Standard perforated 304 stainless steel screens are spot welded along the seam for maximum strength. Different size perforations and meshes are available in stainless steel, monel, and brass to meet specific media requirements. If media is not indicated, screens for *steam* will be supplied.

SELF CLEANING

Self cleaning is accomplished by opening the valve or drain plug connected to the blow-off port. **Warning:** See Maintenance Instructions on page S6 of the Strainer Information Section for additional precautions and detailed information on servicing the strainer.

WORKING PRESSURES - NON SHOCK

| NOM. RATING | MEDIA | 1/2" to 14" | 15 mm to 350 mm |
|--------------------------------------|--------|-----------------|------------------|
| 150# R.F. & D. (STANDARD FLANGE) | STEAM | 150 PSI @ 565°F | 1035 KPa @ 296°C |
| | W.O.G. | 285 PSI @ 100°F | 1966 KPa @ 38°C |
| NOM. RATING | MEDIA | 1/2" to 14" | 15 mm to 350 mm |
| 300# R.F. & D. (EX. HEAVY FLANGE) | STEAM | 300 PSI @ 838°F | 2069 KPa @ 448°C |
| | W.O.G. | 740 PSI @ 100°F | 5104 KPa @ 38°C |



Style SA-7

Y-Strainer, 150 lb. & 300 lb. Flanged
Carbon Steel (ASTM A 216, Grade WCB)

PARTS LIST

| ITEM | DESCRIPTION | MATERIAL |
|------|--------------------|--------------------------------------|
| 1* | Body | Carbon Steel (ASTM A 216, Grade WCB) |
| 2 | Screen | Stainless Steel (304) |
| 3 | Gasket | Spiral Wound Stainless Steel (304) |
| 4 | Cover | Carbon Steel (ASTM A 216, Grade WCB) |
| 5 | Hex Head Cap Screw | Carbon Steel (ASTM A 193, Grade B7) |

Optional: Blow-off Plug, Carbon Steel.

*Optional Body Materials Available in LCB, WC6, and WC9.

STANDARD SCREENS SUPPLIED

| SIZE | | | SCREEN PERFORATION | | | | | |
|----------|------------|----|--------------------|-----|-----------|-------------|-----|-----------|
| | | | FOR STEAM | | OPEN AREA | FOR LIQ-UID | | OPEN AREA |
| in | mm | | in | mm | | in | mm | |
| 1/2 to 4 | 15 to 100 | 28 | 3/64 | 1.2 | 33% | 1/16 | 1.6 | 30% |
| 5 to 10 | 125 to 250 | 22 | 3/64 | 1.2 | 33% | 1/8 | 3.2 | 43% |

Standard screens supplied are for **steam service**, unless otherwise specified.

Options: Other perforations, meshes, and screen materials are available.

| SIZE | | DIMENSIONS | | | | | | | | | | WEIGHTS | | | |
|-------|-----|------------|-----|---------|-----|---------|-----|---------|-----|-------------|----|---------|--------|------|--------|
| | | A | | | | B | | | | E | | | | | |
| | | 150# | | 300# | | 150# | | 300# | | 150# & 300# | | 150# | | 300# | |
| in | mm | in | mm | in | mm | in | mm | in | mm | in | mm | lbs | kgs | lbs | kgs |
| 1/2 | 15 | 6-1/2 | 165 | 6-1/8 | 156 | 3-3/4 | 95 | 3-3/4 | 95 | 3/8 | 10 | 7 | 3.02 | 8 | 3.45 |
| 3/4 | 20 | 7-3/8 | 187 | 7-3/4 | 197 | 4-1/4 | 108 | 4-1/4 | 108 | 1/2 | 15 | 10 | 4.46 | 13 | 5.68 |
| 1 | 25 | 7-3/8 | 187 | 7-7/8 | 200 | 4-1/4 | 108 | 4-1/4 | 108 | 1/2 | 15 | 10 | 4.28 | 13 | 5.59 |
| 1-1/4 | 32 | 7 | 178 | 8-1/8 | 206 | 5-1/8 | 130 | 5-1/8 | 130 | 1/2 | 15 | 13 | 5.86 | 21 | 9.28 |
| 1-1/2 | 40 | 7-1/8 | 181 | 8-1/4 | 210 | 5-1/8 | 130 | 5-1/8 | 130 | 1/2 | 15 | 14 | 6.20 | 21 | 9.37 |
| 2 | 50 | 7-7/8 | 200 | 9-1/2 | 241 | 6 | 152 | 6 | 152 | 1/2 | 15 | 23 | 10.15 | 27 | 11.83 |
| 2-1/2 | 65 | 9-3/4 | 248 | 10-3/8 | 264 | 7 | 178 | 7 | 178 | 1 | 25 | 36 | 16.16 | 41 | 18.53 |
| 3 | 80 | 10-1/16 | 256 | 12 | 305 | 7-7/16 | 189 | 7-5/16 | 186 | 1 | 25 | 40 | 17.76 | 56 | 25.06 |
| 4 | 100 | 12-1/8 | 308 | 14-1/2 | 368 | 8-15/16 | 227 | 8-15/16 | 227 | 1-1/2 | 40 | 61 | 27.26 | 95 | 42.83 |
| 5 | 125 | 15-1/2 | 394 | 19-5/16 | 491 | 13-1/32 | 331 | 13-1/32 | 331 | 2 | 50 | 101 | 45.58 | 189 | 85.72 |
| 6 | 150 | 18-1/2 | 470 | 19-5/16 | 491 | 13-1/4 | 337 | 13-1/4 | 337 | 2 | 50 | 134 | 60.72 | 189 | 85.57 |
| 8 | 200 | 21-3/8 | 543 | 23-3/8 | 594 | 15-1/2 | 394 | 15-1/2 | 394 | 2 | 50 | 224 | 101.30 | 320 | 144.91 |
| 10 | 250 | 26 | 660 | 27-3/8 | 695 | 18-7/16 | 468 | 18-7/16 | 468 | 2 | 50 | 326 | 147.49 | 481 | 218.01 |
| 12 | 300 | 29-7/8 | 759 | 32 | 813 | 21-5/8 | 549 | 21-5/8 | 549 | 2 | 50 | 622 | 282.08 | 839 | 380.12 |
| 14 | 350 | 34-1/2 | 876 | 36 | 914 | 25 | 635 | 25 | 635 | 2 | 50 | 791 | 358.62 | 1017 | 460.96 |

Certified dimensional drawings are available upon request.

†This table reflects only the nearest metric equivalents.

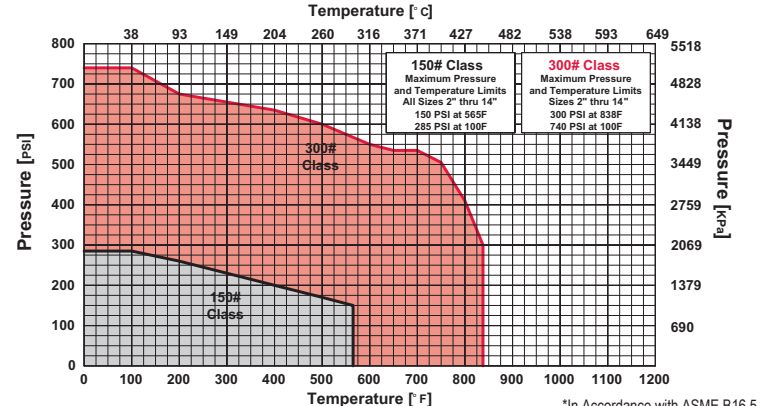
TOTAL SCREEN AREA

| Size | (in ²) | Size | (in ²) | Size | (in ²) | Size | (in ²) |
|--------|--------------------|--------|--------------------|------|--------------------|---|--------------------|
| 1/2" | 6.46 | 1-1/2" | 18.68 | 4" | 91.89 | 10" | 532.80 |
| 3/4" | 12.32 | 2" | 30.28 | 5" | 209.41 | 12" | 600.71 |
| 1" | 12.32 | 2-1/2" | 46.91 | 6" | 241.18 | (Total screen area listed for 150 lb. class only) | |
| 1-1/4" | 18.68 | 3" | 57.62 | 8" | 342.86 | | |

*See DETERMINING RATIOS on page S5 of the Strainer Information Section for calculating NET FREE AREA of the screen to inside pipe area.

PRESSURE vs. TEMPERATURE CHART

150# & 300# Flanged Carbon Steel (ASTM A 216, Grade WCB)



Style SA

Y-Strainer

Carbon Steel (ASTM A 216, Grade WCB)

600 lb. Flanged



Cast Carbon Steel Y-Strainer

APPLICATIONS

Steam, water, oil or gas where protection from foreign matter in a pipeline is required.

CONSTRUCTION

The Keckley Style SA strainers are constructed from rugged carbon steel castings and are machined to exacting specifications. These bodies have drilled flanges that are in accordance with ASME B16.5. All flanges come standard with back-faced bolt holes.

FEATURES

The Keckley Style SA strainer features a machined groove in both the body and cover for proper screen alignment and to ensure accurate reseating when servicing is required. The gasket is 304 stainless steel spiral wound and is compressed between the body and cover (for maximum strength and durability) and designed for high pressure and high temperature service. All Keckley Style SA strainers have cap screws and can be furnished with a steel blow-off plug upon request.

Blind covers are available upon request.

SCREENS

Standard perforated 304 stainless steel screens are spot welded along the seam for maximum strength. Different size perforations and meshes are available in stainless steel, monel, and brass to meet specific media requirements. If media is not indicated, screens for *steam* will be supplied.

SELF CLEANING

Self cleaning is accomplished by opening the valve or drain plug connected to the blow-off port. **Warning:** See Maintenance Instructions on page **S6** of the Strainer Information Section for additional precautions and detailed information on servicing the strainer.

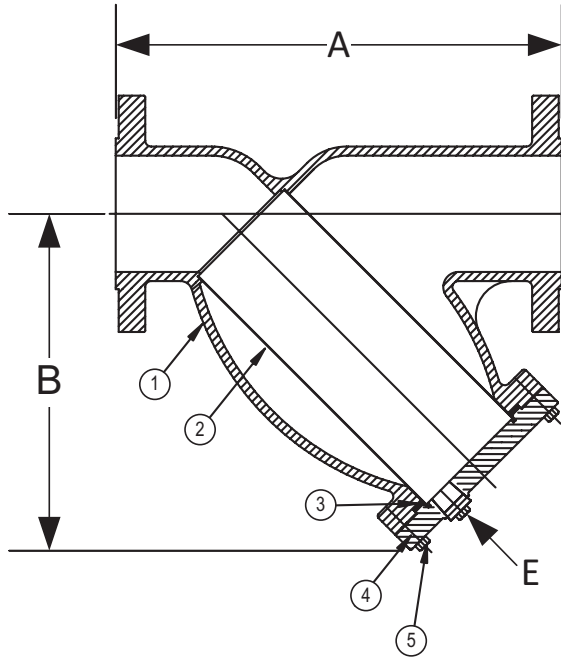
WORKING PRESSURES - NON SHOCK

| NOM. RATING | MEDIA | 1/2" to 12" | 15 mm to 300 mm |
|----------------------------|--------|------------------|------------------|
| 600# R.F. & D. (FLANGE) | STEAM | 600 PSI @ 838°F | 4138 KPa @ 448°C |
| | W.O.G. | 1480 PSI @ 100°F | 10208 KPa @ 38°C |

Style SA

Y-Strainer, 600 lb. Flanged

Carbon Steel (ASTM A 216, Grade WCB)



PARTS LIST

| ITEM | DESCRIPTION | MATERIAL |
|------|--------------------|--------------------------------------|
| 1 | Body | Carbon Steel (ASTM A 216, Grade WCB) |
| 2 | Screen | Stainless Steel (304) |
| 3 | Gasket | Spiral Wound Stainless Steel (304) |
| 4 | Cover | Carbon Steel (ASTM A 216, Grade WCB) |
| 5 | Hex Head Cap Screw | Carbon Steel (ASTM A 193, Grade B7) |

Optional: Blow-off Plug, Carbon Steel (ASTM A 105).

*Optional Body Materials Available in LCB, WC6, and WC9.

STANDARD SCREENS SUPPLIED

| SIZE | | | SCREEN PERFORATION | | | | | |
|---------|------------|----|--------------------|-----|-----------|-------------|-----|-----------|
| | | | FOR STEAM | | OPEN AREA | FOR LIQ-UID | | OPEN AREA |
| in | mm | | in | mm | | in | mm | |
| 2 to 4 | 50 to 100 | 28 | 3/64 | 1.2 | 33% | 1/16 | 1.6 | 30% |
| 5 to 10 | 125 to 250 | 22 | 3/64 | 1.2 | 33% | 1/8 | 3.2 | 43% |

Standard screens supplied are for **steam service**, unless otherwise specified.

Options: Other perforations, meshes, and screen materials are available.

| SIZE | | DIMENSIONS | | | | | | WEIGHTS | |
|-------|-----|------------|------|--------|-----|-------|----|---------|--------|
| | | A | | B | | E | | | |
| in | mm | in | mm | in | mm | in | mm | lbs | kgs |
| 1/2 | 15 | 6-5/8 | 168 | 3-1/2 | 89 | 3/8 | 10 | 15 | 6.80 |
| 3/4 | 20 | 8-3/8 | 213 | 3-3/4 | 95 | 1/2 | 15 | 20 | 9.07 |
| 1 | 25 | 8-3/8 | 213 | 3-3/4 | 95 | 1/2 | 15 | 20 | 9.07 |
| 1-1/4 | 32 | 10-1/8 | 257 | 5-1/2 | 140 | 1/2 | 15 | 27 | 12.25 |
| 1-1/2 | 40 | 10-1/4 | 360 | 5-1/2 | 140 | 1/2 | 15 | 27 | 12.25 |
| 2 | 50 | 11 | 279 | 7 | 178 | 1/2 | 15 | 31 | 13.83 |
| 2-1/2 | 65 | 12 | 305 | 8-1/4 | 210 | 1 | 25 | 49 | 21.92 |
| 3 | 80 | 13-1/2 | 343 | 9-1/4 | 235 | 1 | 25 | 63 | 28.17 |
| 4 | 100 | 18 | 457 | 12-1/2 | 318 | 1-1/2 | 40 | 127 | 57.53 |
| 6 | 150 | 25-5/8 | 651 | 20 | 508 | 2 | 50 | 339 | 153.51 |
| 8 | 200 | 31-3/4 | 806 | 24 | 610 | 2 | 50 | 748 | 338.84 |
| 10 | 250 | 37-3/4 | 959 | 28-1/2 | 724 | 2 | 50 | 1213 | 550.00 |
| 12 | 300 | 45-1/2 | 1156 | 34-1/2 | 876 | 2 | 50 | 1511 | 685.00 |

Larger sizes available upon request.

†This table reflects only the nearest metric equivalents.

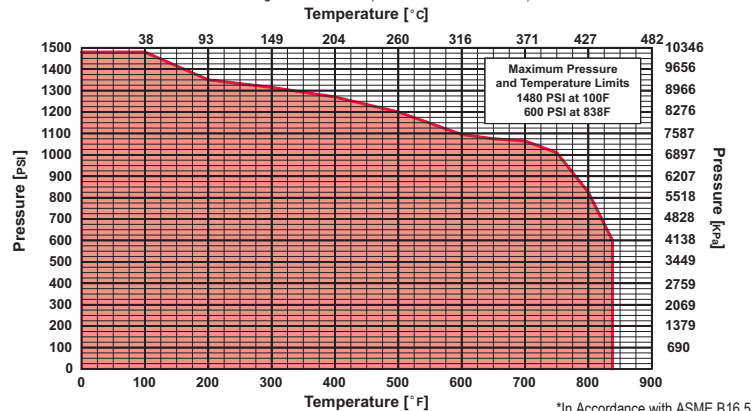
TOTAL SCREEN AREA

| Size | (in ²) | Size | (in ²) | Size | (in ²) | Size | (in ²) |
|--------|--------------------|--------|--------------------|------|--------------------|------|--------------------|
| 1/2" | -- | 1-1/2" | -- | 4" | 151.49 | 12" | 1313.88 |
| 3/4" | -- | 2" | 44.17 | 6" | 416.73 | | |
| 1" | -- | 2-1/2" | 64.14 | 8" | 630.23 | | |
| 1-1/4" | -- | 3" | 77.63 | 10" | 894.52 | | |

*See DETERMINING RATIOS on page S5 of the Strainer Information Section for calculating NET FREE AREA of the screen to inside pipe area.

PRESSURE vs. TEMPERATURE CHART

600# Flanged Carbon Steel (ASTM A 216, Grade WCB)



Style SA-7

Y-Strainer

Carbon Steel (ASTM A 216, Grade WCB)

150 lb. & 300 lb. Butt Weld



Cast Carbon Steel Y-Strainer

APPLICATIONS

Steam, water, oil or gas where protection from foreign matter in a pipeline is required.

CONSTRUCTION

The Keckley Style SA-7 strainers are constructed from rugged carbon steel castings and are machined to exacting specifications.

Style SA-7 butt weld connections will be machined to match schedule 40 pipe.

FEATURES

The Keckley Style SA-7 strainer features a machined groove in both the body and cover for proper screen alignment and to ensure accurate reseating when servicing is required. The gasket is 304 stainless steel spiral wound and is compressed between the body and cover (for maximum strength and durability) and designed for high pressure and high temperature service. All Keckley Style SA-7 strainers have cap screws and can be furnished with a steel blow-off plug upon request.

Blind covers are available upon request.

SCREENS

Standard perforated 304 stainless steel screens are spot welded along the seam for maximum strength. Different size perforations and meshes are available in stainless steel, monel, and brass to meet specific media requirements. If media is not indicated, screens for *steam* will be supplied.

SELF CLEANING

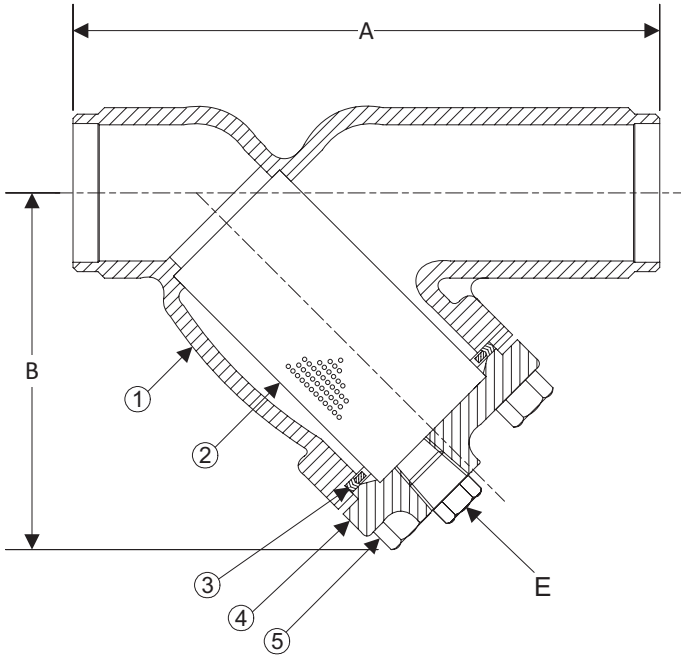
Self cleaning is accomplished by opening the valve or drain plug connected to the blow-off port. **Warning:** See Maintenance Instructions on page **S6** of the Strainer Information Section for additional precautions and detailed information on servicing the strainer.

WORKING PRESSURES - NON SHOCK

| NOM. RATING | MEDIA | 1/2" to 12" | 15 mm to 300 mm |
|------------------|--------|-----------------|------------------|
| 150# (BUTT WELD) | STEAM | 150 PSI @ 565°F | 1035 KPa @ 296°C |
| | W.O.G. | 285 PSI @ 100°F | 1966 KPa @ 38°C |
| NOM. RATING | MEDIA | 1/2" to 12" | 15 mm to 300 mm |
| 300# (BUTT WELD) | STEAM | 300 PSI @ 838°F | 2069 KPa @ 448°C |
| | W.O.G. | 740 PSI @ 100°F | 5104 KPa @ 38°C |

Style SA-7

Y-Strainer, 150 lb. & 300 lb. Butt Weld
Carbon Steel (ASTM A 216, Grade WCB)



PARTS LIST

| ITEM | DESCRIPTION | MATERIAL |
|------|--------------------|--------------------------------------|
| 1* | Body | Carbon Steel (ASTM A 216, Grade WCB) |
| 2 | Screen | Stainless Steel (304) |
| 3 | Gasket | Spiral Wound Stainless Steel (304) |
| 4 | Cover | Carbon Steel (ASTM A 216, Grade WCB) |
| 5 | Hex Head Cap Screw | Carbon Steel (ASTM A 193, Grade B7) |

Optional: Blow-off Plug, Carbon Steel.

*Optional Body Materials Available in LCB, WC6, and WC9.

STANDARD SCREENS SUPPLIED

| SIZE | | | SCREEN PERFORATION | | | | | |
|----------|------------|----|--------------------|-----|-----------|-------------|-----|-----------|
| | | | FOR STEAM | | OPEN AREA | FOR LIQ-UID | | OPEN AREA |
| in | mm | | in | mm | | in | mm | |
| 1/2 to 4 | 15 to 100 | 28 | 3/64 | 1.2 | 33% | 1/16 | 1.6 | 30% |
| 5 to 10 | 125 to 250 | 22 | 3/64 | 1.2 | 33% | 1/8 | 3.2 | 43% |

Standard screens supplied are for **steam service**, unless otherwise specified.

Options: Other perforations, meshes, and screen materials are available.

| SIZE | | DIMENSIONS | | | | | | | | | | WEIGHTS | | | |
|-------|-----|------------|-----|---------|-----|---------|-----|---------|-----|-------------|----|---------|--------|------|--------|
| | | A | | | | B | | | | E | | | | | |
| | | 150# | | 300# | | 150# | | 300# | | 150# & 300# | | 150# | | 300# | |
| in | mm | in | mm | in | mm | in | mm | in | mm | in | mm | lbs | kgs | lbs | kgs |
| 1/2 | 15 | 6-1/2 | 165 | 6-1/8 | 156 | 3-3/4 | 95 | 3-3/4 | 95 | 3/8 | 10 | 6 | 2.72 | 6 | 2.72 |
| 3/4 | 20 | 7-3/8 | 187 | 7-3/4 | 197 | 4-1/4 | 108 | 4-1/4 | 108 | 1/2 | 15 | 8 | 3.63 | 10 | 4.53 |
| 1 | 25 | 7-3/8 | 187 | 7-7/8 | 200 | 4-1/4 | 108 | 4-1/4 | 108 | 1/2 | 15 | 8 | 3.63 | 10 | 4.53 |
| 1-1/4 | 32 | 7 | 178 | 8-1/8 | 206 | 5-1/8 | 130 | 5-1/8 | 130 | 1/2 | 15 | 10 | 4.53 | 15 | 6.80 |
| 1-1/2 | 40 | 7-1/8 | 181 | 8-1/4 | 210 | 5-1/8 | 130 | 5-1/8 | 130 | 1/2 | 15 | 11 | 4.99 | 15 | 6.80 |
| 2 | 50 | 7-7/8 | 200 | 9-1/2 | 241 | 6 | 152 | 6 | 152 | 1/2 | 15 | 14 | 5.93 | 16 | 6.92 |
| 2-1/2 | 65 | 9-3/4 | 248 | 10-3/8 | 264 | 7 | 178 | 7 | 178 | 1 | 25 | 19 | 8.56 | 23 | 10.06 |
| 3 | 80 | 10-1/16 | 256 | 12 | 305 | 7-7/16 | 189 | 7-5/16 | 186 | 1 | 25 | 21 | 9.46 | 50 | 22.65 |
| 4 | 100 | 12-1/8 | 308 | 14-1/2 | 368 | 8-15/16 | 227 | 8-15/16 | 227 | 1-1/2 | 40 | 37 | 16.77 | 57 | 25.80 |
| 5 | 125 | 15-1/2 | 394 | 19-5/16 | 491 | 13-1/32 | 331 | 13-1/32 | 331 | 2 | 50 | 84 | 37.85 | 145 | 65.36 |
| 6 | 150 | 18-1/2 | 470 | 19-5/16 | 491 | 13-1/4 | 337 | 13-1/4 | 337 | 2 | 50 | 104 | 46.87 | 145 | 65.36 |
| 8 | 200 | 21-3/8 | 543 | 23-3/8 | 594 | 15-1/2 | 394 | 15-1/2 | 394 | 2 | 50 | 149 | 67.51 | 247 | 111.80 |
| 10 | 250 | 26 | 660 | 27-3/8 | 695 | 18-7/16 | 468 | 18-7/16 | 468 | 2 | 50 | 261 | 118.25 | 346 | 156.52 |
| 12 | 300 | 29-7/8 | 759 | 32 | 813 | 21-5/8 | 549 | 21-5/8 | 549 | 2 | 50 | 452 | 204.68 | 575 | 260.58 |

Certified dimensional drawings are available upon request.

*This table reflects only the nearest metric equivalents.

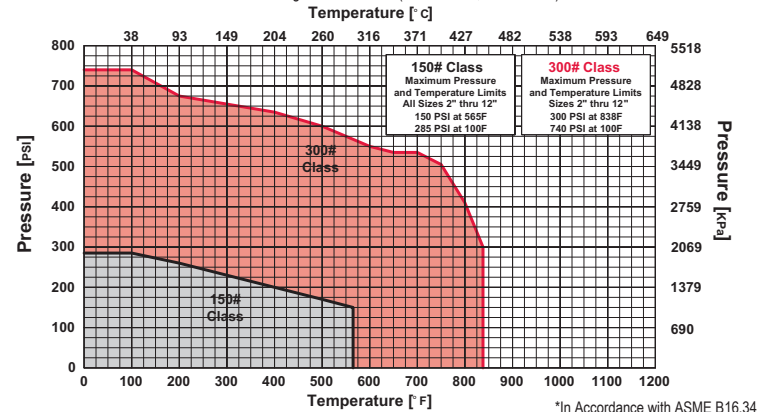
TOTAL SCREEN AREA

| Size | (in ²) | Size | (in ²) | Size | (in ²) | Size | (in ²) |
|--------|--------------------|--------|--------------------|------|--------------------|---|--------------------|
| 1/2" | 6.46 | 1-1/2" | 18.68 | 4" | 91.89 | 10" | 532.80 |
| 3/4" | 12.32 | 2" | 30.28 | 5" | 209.41 | 12" | 600.71 |
| 1" | 12.32 | 2-1/2" | 46.91 | 6" | 241.18 | (Total screen area listed for 150 lb. class only) | |
| 1-1/4" | 18.68 | 3" | 57.62 | 8" | 342.86 | | |

*See DETERMINING RATIOS on page S5 of the Strainer Information Section for calculating NET FREE AREA of the screen to inside pipe area.

PRESSURE vs. TEMPERATURE CHART

150# & 300# Flanged Carbon Steel (ASTM A 216, Grade WCB)



*In Accordance with ASME B16.34

Style SA

Y-Strainer

Carbon Steel (ASTM A 216, Grade WCB)

600 lb. Butt Weld



Cast Carbon Steel Y-Strainer

APPLICATIONS

Steam, water, oil or gas where protection from foreign matter in a pipeline is required.

CONSTRUCTION

The Keckley Style SA strainers are constructed from rugged carbon steel castings and are machined to exacting specifications.

Style SA 600 lb. butt weld connections will be machined to match schedule 80 pipe unless otherwise specified.

FEATURES

The Keckley Style SA strainer features a machined groove in both the body and cover for proper screen alignment and to ensure accurate reseating when servicing is required. The gasket is 304 stainless steel spiral wound and is compressed between the body and cover (for maximum strength and durability) and designed for high pressure and high temperature service. All Keckley Style SA strainers have cap screws and can be furnished with a steel blow-off plug upon request.

Blind covers are available upon request.

SCREENS

Standard perforated 304 stainless steel screens are spot welded along the seam for maximum strength. Different size perforations and meshes are available in stainless steel, monel, and brass to meet specific media requirements. If media is not indicated, screens for *steam* will be supplied.

SELF CLEANING

Self cleaning is accomplished by opening the valve or drain plug connected to the blow-off port. **Warning:** See Maintenance Instructions on page **S6** of the Strainer Information Section for additional precautions and detailed information on servicing the strainer.

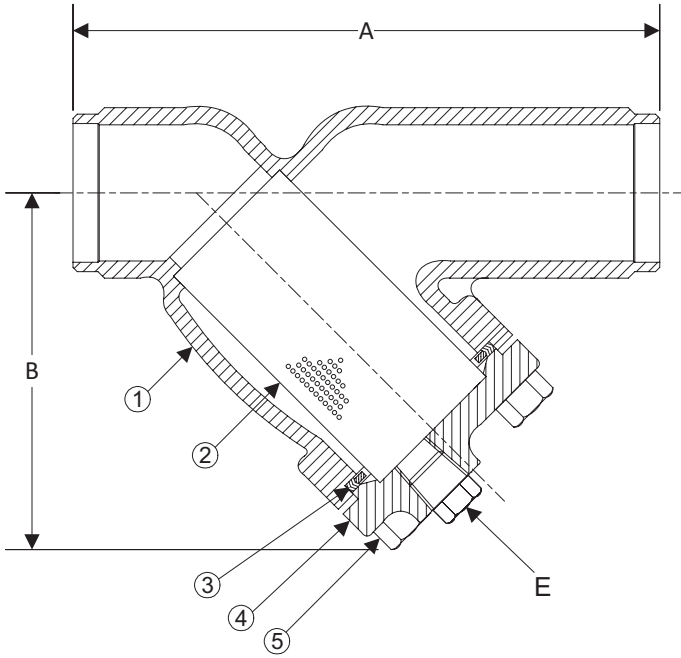
WORKING PRESSURES - NON SHOCK

| NOM. RATING | MEDIA | 1/2" to 12" | 15 mm to 300 mm |
|------------------|--------|------------------|------------------|
| 600# (BUTT WELD) | STEAM | 600 PSI @ 838°F | 4138 KPa @ 448°C |
| | W.O.G. | 1480 PSI @ 100°F | 10208 KPa @ 38°C |

Style SA

Y-Strainer, 600 lb. Butt Weld

Carbon Steel (ASTM A 216, Grade WCB)



PARTS LIST

| ITEM | DESCRIPTION | MATERIAL |
|------|--------------------|--------------------------------------|
| 1 | Body | Carbon Steel (ASTM A 216, Grade WCB) |
| 2 | Screen | Stainless Steel (304) |
| 3 | Gasket | Spiral Wound Stainless Steel (304) |
| 4 | Cover | Carbon Steel (ASTM A 216, Grade WCB) |
| 5 | Hex Head Cap Screw | Carbon Steel (ASTM A 193, Grade B7) |

Optional: Blow-off Plug, Carbon Steel (ASTM A 105).

*Optional Body Materials Available in LCB, WC6, and WC9.

STANDARD SCREENS SUPPLIED

| SIZE | | | SCREEN PERFORATION | | | | | |
|---------|------------|----|--------------------|-----|-----------|-------------|-----|-----------|
| | | | FOR STEAM | | OPEN AREA | FOR LIQ-UID | | OPEN AREA |
| in | mm | | in | mm | | in | mm | |
| 2 to 4 | 50 to 100 | 28 | 3/64 | 1.2 | 33% | 1/16 | 1.6 | 30% |
| 5 to 10 | 125 to 250 | 22 | 3/64 | 1.2 | 33% | 1/8 | 3.2 | 43% |

Standard screens supplied are for **steam service**, unless otherwise specified.

Options: Other perforations, meshes, and screen materials are available.

| SIZE | | DIMENSIONS | | | | | | WEIGHTS | |
|-------|-----|------------|------|--------|-----|-------|----|---------|--------|
| | | A | | B | | E | | | |
| in | mm | in | mm | in | mm | in | mm | lbs | kgs |
| 1/2 | 15 | 6-5/8 | 168 | 3-1/2 | 89 | 3/8 | 10 | 9 | 4.08 |
| 3/4 | 20 | 8-3/8 | 213 | 3-3/4 | 95 | 1/2 | 15 | 11 | 4.99 |
| 1 | 25 | 8-3/8 | 213 | 3-3/4 | 95 | 1/2 | 15 | 11 | 4.99 |
| 1-1/4 | 32 | 10-1/8 | 257 | 5-1/2 | 140 | 1/2 | 15 | 13 | 5.89 |
| 1-1/2 | 40 | 10-1/4 | 360 | 5-1/2 | 140 | 1/2 | 15 | 13 | 5.89 |
| 2 | 50 | 11 | 279 | 7 | 178 | 1/2 | 15 | 15 | 6.80 |
| 2-1/2 | 65 | 12 | 305 | 8-1/4 | 210 | 1 | 25 | 30 | 13.60 |
| 3 | 80 | 13-1/2 | 343 | 9-1/4 | 235 | 1 | 25 | 33 | 14.97 |
| 4 | 100 | 18 | 457 | 12-1/2 | 318 | 1-1/2 | 40 | 77 | 34.93 |
| 6 | 150 | 25-5/8 | 651 | 20 | 508 | 2 | 50 | 217 | 98.43 |
| 8 | 200 | 31-3/4 | 806 | 24 | 610 | 2 | 50 | 386 | 175.09 |
| 10 | 250 | 37-3/4 | 959 | 28-1/2 | 724 | 2 | 50 | 668 | 303.00 |
| 12 | 300 | 45-1/2 | 1156 | 34-1/2 | 876 | 2 | 50 | 831 | 376.94 |

Larger sizes available upon request.

†This table reflects only the nearest metric equivalents.

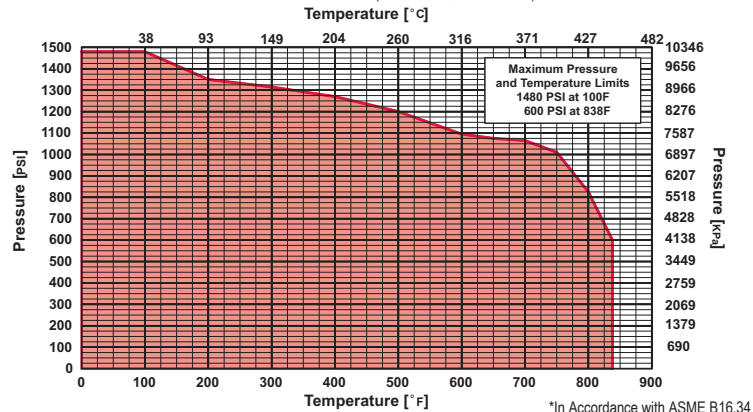
TOTAL SCREEN AREA

| Size | (in ²) | Size | (in ²) | Size | (in ²) | Size | (in ²) |
|--------|--------------------|--------|--------------------|------|--------------------|------|--------------------|
| 1/2" | -- | 1-1/2" | -- | 4" | 151.49 | 12" | 1313.88 |
| 3/4" | -- | 2" | 44.17 | 6" | 416.73 | | |
| 1" | -- | 2-1/2" | 64.14 | 8" | 630.23 | | |
| 1-1/4" | -- | 3" | 77.63 | 10" | 894.52 | | |

*See DETERMINING RATIOS on page S5 of the Strainer Information Section for calculating NET FREE AREA of the screen to inside pipe area.

PRESSURE vs. TEMPERATURE CHART

600# Butt Weld Carbon Steel (ASTM A 216, Grade WCB)



*In Accordance with ASME B16.34

Style SSB-7

Y-Strainer

Stainless Steel (ASTM A 351, Grade CF8M)

600 lb. Threaded

600 lb. Socket Weld



Cast 316 Stainless Steel Y-Strainer

APPLICATIONS

Steam, water, oil or gas where protection from foreign matter in a pipeline is required.

CONSTRUCTION

The Keckley Style SSB-7 strainers are constructed from rugged 316 stainless steel castings that are machined to exacting specifications.

Socket Weld bore is in compliance with ASME B16.11 unless otherwise specified.

FEATURES

The Keckley Style SSB-7 strainer features a machined groove in the body and cap for proper alignment and to ensure accurate reseating when servicing is required. This strainer has a straight threaded cap and is furnished standard with a NPT blow-off connection. The gasket is 304 stainless steel spiral wound and is compressed between the body and cap (for maximum strength and durability) and designed for both high pressure and high temperature service. Keckley Style SSB-7 strainers can be supplied with a stainless steel blow-off plug upon request.

SCREENS

Standard perforated 304 stainless steel screens are spot welded along the seam for maximum strength. Different size perforations and meshes are available in stainless steel, monel, and brass to meet specific media requirements. If media is not indicated, screens for *steam* will be supplied.

SELF CLEANING

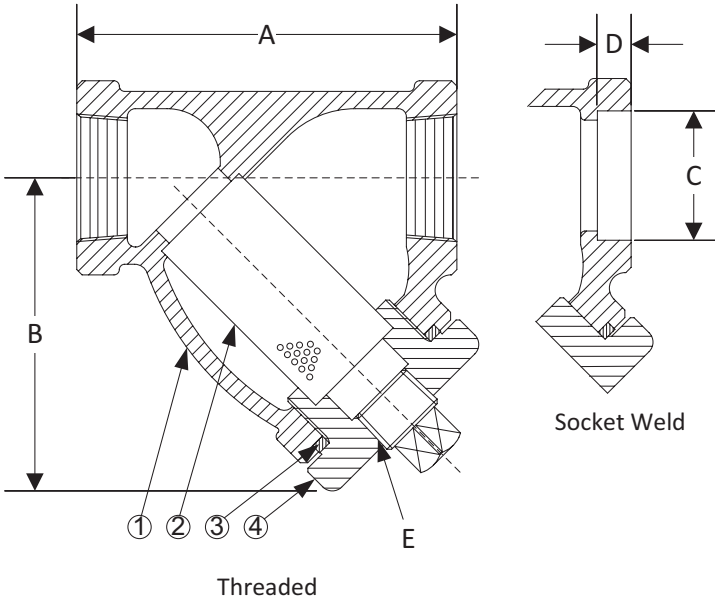
Self cleaning is accomplished by opening the valve or drain plug connected to the blow-off port. **Warning:** See Maintenance Instructions on page S6 of the Strainer Information Section for additional precautions and detailed information on servicing the strainer.

WORKING PRESSURES - NON SHOCK

| NOM. RATING | MEDIA | 1/4" to 3" | 8 mm to 80 mm |
|-------------------------------|--------|------------------|------------------|
| 600# (THREADED & SOCKET WELD) | STEAM | 600 PSI @ 1125°F | 4138 KPa @ 607°C |
| | W.O.G. | 1440 PSI @ 100°F | 9932 KPa @ 38°C |

Style SSB-7

Y-Strainer, 600 lb. Threaded & Socket Weld
Stainless Steel (ASTM A 351, Grade CF8M)



PARTS LIST

| ITEM | DESCRIPTION | MATERIAL |
|------|-------------|--|
| 1 | Body | Stainless Steel (ASTM A 351, Grade CF8M) |
| 2 | Screen | Stainless Steel (304) |
| 3 | Gasket | Spiral Wound Stainless Steel (304) |
| 4 | Cap | Stainless Steel (ASTM A 351, Grade CF8M) |

Optional: Blow-off Plug, Carbon Steel (ASTM A 105).

*Optional Body Materials Available in 304 and 400 Series SS, Alloy 20, Hastelloy, Inconel, Monel and Stellite..

STANDARD SCREENS SUPPLIED

| SIZE | | SCREEN PERFORATION | | | |
|------|----|--------------------|-----------|-------------|-----------|
| | | FOR STEAM | OPEN AREA | FOR LIQ-UID | OPEN AREA |
| in | mm | in | mm | in | mm |

Standard screens supplied are for **steam service**, unless otherwise specified.
Options: Other perforations, meshes, and screen materials are available.

| SIZE | | DIMENSIONS | | | | | | | | | | WEIGHTS | |
|-------|----|------------|-----|---------|-----|-------|----|-----|----|-------|----|---------|-------|
| | | A | | B | | C | | D | | E | | | |
| in | mm | in | mm | in | mm | in | mm | in | mm | in | mm | lbs | kgs |
| 1/4 | 8 | 2-15/16 | 75 | 2-7/16 | 62 | 0.555 | 14 | 3/8 | 10 | 1/4 | 8 | 2 | 0.76 |
| 3/8 | 10 | 2-15/16 | 75 | 2-7/16 | 62 | 0.690 | 18 | 3/8 | 10 | 1/4 | 8 | 2 | 0.76 |
| 1/2 | 15 | 2-15/16 | 75 | 2-7/16 | 62 | 0.855 | 22 | 3/8 | 10 | 1/4 | 8 | 2 | 0.76 |
| 3/4 | 20 | 3-11/16 | 94 | 3 | 76 | 1.065 | 27 | 1/2 | 13 | 3/8 | 10 | 3 | 1.21 |
| 1 | 22 | 4-9/16 | 116 | 4-5/16 | 110 | 1.330 | 34 | 1/2 | 13 | 3/8 | 10 | 6 | 2.33 |
| 1-1/4 | 32 | 4-15/16 | 125 | 4-3/16 | 106 | 1.675 | 43 | 1/2 | 13 | 3/4 | 20 | 7 | 3.02 |
| 1-1/2 | 40 | 5-9/16 | 141 | 4-11/16 | 119 | 1.915 | 49 | 1/2 | 13 | 3/4 | 20 | 9 | 3.98 |
| 2 | 50 | 6-15/16 | 176 | 6-1/4 | 159 | 2.406 | 61 | 5/8 | 16 | 1 | 25 | 15 | 6.80 |
| 2-1/2 | 65 | 12 | 305 | 9-3/8 | 238 | 2.906 | 74 | 5/8 | 16 | 1-1/4 | 32 | 34 | 15.03 |
| 3 | 80 | 12 | 305 | 9-3/8 | 238 | 3.535 | 90 | 5/8 | 16 | 1-1/4 | 32 | 36 | 15.97 |

Certified dimensional drawings are available upon request.

*This table reflects only the nearest metric equivalents.

FLOW COEFFICIENTS

| Size | C _v | Size | C _v | Size | C _v |
|------|----------------|--------|----------------|--------|----------------|
| 1/4" | 9.5 | 1" | 30 | 2-1/2" | 129.7 |
| 3/8" | 9.5 | 1-1/4" | 44.9 | 3" | 161.3 |
| 1/2" | 9.5 | 1-1/2" | 61 | | |
| 3/4" | 18.7 | 2" | 98 | | |

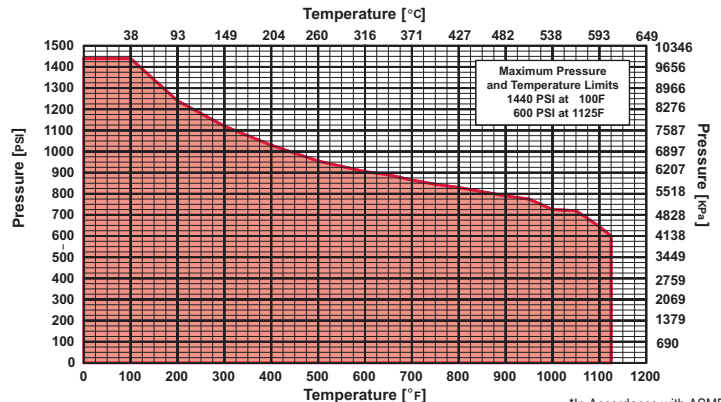
TOTAL SCREEN AREA

| Size | (in ²) | Size | (in ²) | Size | (in ²) |
|------|--------------------|--------|--------------------|--------|--------------------|
| 1/4" | 2.75 | 1" | 10.08 | 2-1/2" | 78.14 |
| 3/8" | 2.75 | 1-1/4" | 12.79 | 3" | 78.14 |
| 1/2" | 2.75 | 1-1/2" | 16.33 | | |
| 3/4" | 4.71 | 2" | 27.04 | | |

*See DETERMINING RATIOS on page S5 of the Strainer Information Section for calculating NET FREE AREA of the screen to inside pipe area.

PRESSURE vs. TEMPERATURE CHART

600# Threaded & Socket Weld Stainless Steel (ASTM A 351, Grade CF8M)



*In Accordance with ASME B16.34

Style SSB-7BC

Y-Strainer

Stainless Steel (ASTM A 351, Grade CF8M)

600 lb. Threaded Bolted Cover

600 lb. Socket Weld Bolted Cover



Cast 316 Stainless Steel Y-Strainer

APPLICATIONS

Steam, water, oil or gas where protection from foreign matter in a pipeline is required.

CONSTRUCTION

The Keckley Style SSB-7BC strainers are constructed from rugged 316 stainless steel castings that are machined to exacting specifications.

Socket Weld bore is in compliance with ASME B16.11 unless otherwise specified.

FEATURES

The Keckley Style SSB-7BC strainer features a machined groove in the body and cap for proper alignment and to ensure accurate reseating when servicing is required. This strainer has a straight threaded cap and is furnished standard with a NPT blow-off connection. The gasket is 304 stainless steel spiral wound and is compressed between the body and cap (for maximum strength and durability) and designed for both high pressure and high temperature service. Keckley Style SSB-7BC strainers can be supplied with a stainless steel blow-off plug upon request.

SCREENS

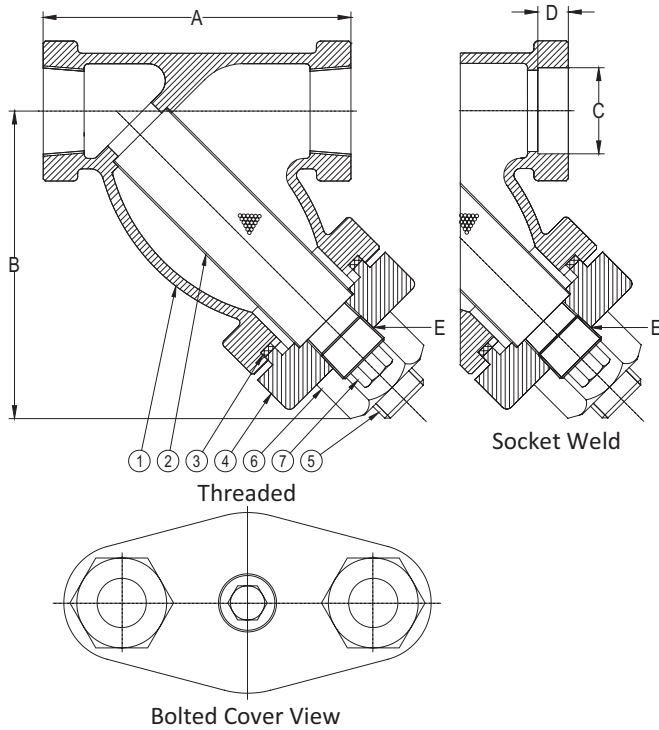
Standard perforated 304 stainless steel screens are spot welded along the seam for maximum strength. Different size perforations and meshes are available in stainless steel, monel, and brass to meet specific media requirements. If media is not indicated, screens for *steam* will be supplied.

SELF CLEANING

Self cleaning is accomplished by opening the valve or drain plug connected to the blow-off port. **Warning:** See Maintenance Instructions on page S6 of the Strainer Information Section for additional precautions and detailed information on servicing the strainer.

WORKING PRESSURES - NON SHOCK

| NOM. RATING | MEDIA | 1/4" to 3" | 8 mm to 80 mm |
|-------------------------------|--------|------------------|------------------|
| 600# (THREADED & SOCKET WELD) | STEAM | 600 PSI @ 1125°F | 4138 KPa @ 607°C |
| | W.O.G. | 1440 PSI @ 100°F | 9932 KPa @ 38°C |



Style SSB-7BC

Y-Strainer, 600 lb. Threaded & Socket Weld
Bolted Cover

Stainless Steel (ASTM A 351, Grade CF8M)

PARTS LIST

| ITEM | DESCRIPTION | MATERIAL |
|------|-------------|---|
| 1 | Body | Stainless Steel (ASTM A 351, Grade CF8M) |
| 2 | Screen | Stainless Steel (304) |
| 3 | Gasket | Spiral Wound Stainless Steel (304) |
| 4 | Cap | Stainless Steel (ASTM A 351, Grade CF8M) |
| 5 | Stud | Stainless Steel (ASTM A 193, Grade B8) |
| 6 | Nut | Stainless Steel (ASTM A 194, Grade 8) |
| 7 | Plug | Stainless Steel (ASTM A 182, Grade F-304) |

*Optional Body Materials Available in 304 and 400 Series SS, Alloy 20, Hastelloy, Inconel, Monel and Stellite..

STANDARD SCREENS SUPPLIED

| SIZE | | SCREEN PERFORATION | | | |
|------|----|--------------------|-----------|-------------|-----------|
| | | FOR STEAM | OPEN AREA | FOR LIQ-UID | OPEN AREA |
| in | mm | in | mm | in | mm |

Standard screens supplied are for **steam service**, unless otherwise specified.
Options: Other perforations, meshes, and screen materials are available.

| SIZE | | DIMENSIONS | | | | | | | | | | WEIGHTS | |
|-------|----|------------|-----|-------|-----|-------|----|-----|----|-------|----|---------|-------|
| | | A | | B | | C | | D | | E | | | |
| in | mm | in | mm | in | mm | in | mm | in | mm | in | mm | lbs | kgs |
| 1/4 | 8 | 3 | 76 | 2-1/2 | 63 | 0.555 | 14 | 3/8 | 10 | 1/4 | 8 | 3 | 1.14 |
| 3/8 | 10 | 3 | 76 | 2-1/2 | 63 | 0.690 | 18 | 3/8 | 10 | 1/4 | 8 | 3 | 1.14 |
| 1/2 | 15 | 3-7/8 | 99 | 3-1/4 | 83 | 0.855 | 22 | 3/8 | 10 | 1/4 | 8 | 3 | 1.14 |
| 3/4 | 20 | 4-1/4 | 108 | 4-1/4 | 108 | 1.065 | 27 | 1/2 | 13 | 3/8 | 10 | 3 | 1.32 |
| 1 | 22 | 4-15/16 | 125 | 4-5/8 | 117 | 1.330 | 34 | 1/2 | 13 | 1/2 | 15 | 6 | 2.33 |
| 1-1/4 | 32 | 5-5/8 | 143 | 5-1/2 | 140 | 1.675 | 43 | 1/2 | 13 | 3/4 | 20 | 10 | 4.30 |
| 1-1/2 | 40 | 6-1/4 | 159 | 6-1/4 | 159 | 1.915 | 49 | 1/2 | 13 | 3/4 | 20 | 12 | 5.43 |
| 2 | 50 | 7-1/2 | 191 | 7-1/4 | 184 | 2.406 | 61 | 5/8 | 16 | 1 | 25 | 18 | 7.74 |
| 2-1/2 | 65 | 12 | 305 | 9-3/8 | 238 | 2.906 | 74 | 5/8 | 16 | 1-1/4 | 32 | 49 | 22.00 |
| 3 | 80 | 12 | 305 | 9-3/8 | 238 | 3.535 | 90 | 5/8 | 16 | 1-1/4 | 32 | 49 | 22.00 |

Certified dimensional drawings are available upon request.

*This table reflects only the nearest metric equivalents.

FLOW COEFFICIENTS

| Size | C _v | Size | C _v | Size | C _v |
|------|----------------|--------|----------------|--------|----------------|
| 1/4" | 9.5 | 1" | 30 | 2-1/2" | 129.7 |
| 3/8" | 9.5 | 1-1/4" | 44.9 | 3" | 161.3 |
| 1/2" | 9.5 | 1-1/2" | 61 | | |
| 3/4" | 18.7 | 2" | 98 | | |

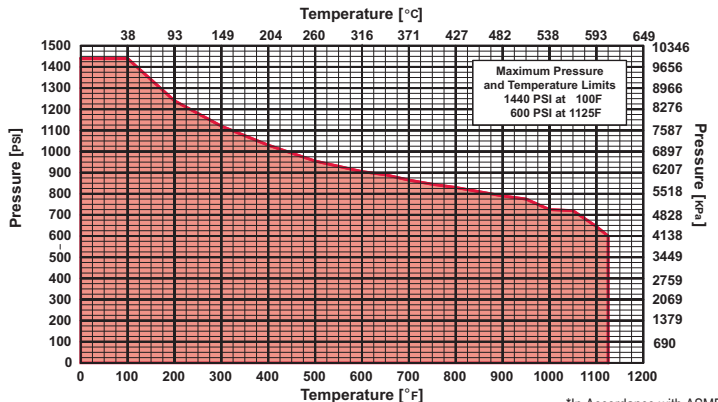
TOTAL SCREEN AREA

| Size | (in ²) | Size | (in ²) | Size | (in ²) |
|------|--------------------|--------|--------------------|--------|--------------------|
| 1/4" | 4.36 | 1" | 13.84 | 2-1/2" | 69.82 |
| 3/8" | 4.36 | 1-1/4" | 20.83 | 3" | 69.82 |
| 1/2" | 4.36 | 1-1/2" | 24.02 | | |
| 3/4" | 9.37 | 2" | 35.48 | | |

*See DETERMINING RATIOS on page S5 of the Strainer Information Section for calculating NET FREE AREA of the screen to inside pipe area.

PRESSURE vs. TEMPERATURE CHART

600# Threaded & Socket Weld Stainless Steel (ASTM A 351, Grade CF8M)



*In Accordance with ASME B16.34

Style SSB

Y-Strainer

Stainless Steel (ASTM A 351, Grade CF8M)

1500 lb. Threaded

1500 lb. Socket Weld



Cast 316 Stainless Steel Y-Strainer

APPLICATIONS

Steam, water, oil or gas where protection from foreign matter in a pipeline is required.

CONSTRUCTION

The Keckley Style SSB strainers are constructed from rugged 316 stainless steel castings that are machined to exacting specifications.

Socket Weld bore is in compliance with ASME B16.11 unless otherwise specified.

FEATURES

The Keckley Style SSB strainer features a machined groove in the body and cap for proper alignment and to ensure accurate reseating when servicing is required. The gasket is 304 stainless steel spiral wound and is compressed between the body and cover (for maximum strength and durability) and designed for both high pressure and high temperature service. The cover is not supplied with a blow-off hole.

SCREENS

Standard perforated 304 stainless steel screens are spot welded along the seam for maximum strength. Different size perforations and meshes are available in stainless steel, monel, and brass to meet specific media requirements. If media is not indicated, screens for *steam* will be supplied.

SELF CLEANING

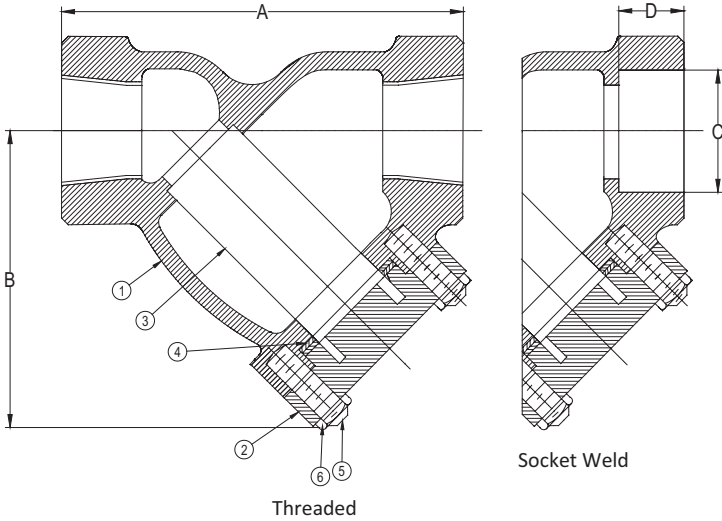
Warning: See Maintenance Instructions on page **S6** of the Strainer Information Section for additional precautions and detailed information on servicing the strainer.

WORKING PRESSURES - NON SHOCK

| NOM. RATING | MEDIA | 1/2" to 3" | 15 mm to 80 mm |
|--------------------------------|--------|-------------------|-------------------|
| 1500# (THREADED & SOCKET WELD) | STEAM | 1500 PSI @ 1125°F | 10346 KPa @ 607°C |
| | W.O.G. | 3600 PSI @ 100°F | 24829 KPa @ 38°C |

Style SSB

Y-Strainer, 1500 lb. Threaded & Socket Weld
Stainless Steel (ASTM A 351, Grade CF8M)



PARTS LIST

| ITEM | DESCRIPTION | MATERIAL |
|------|-------------|--|
| 1* | Body | Stainless Steel (ASTM A 351, Grade CF8M) |
| 2 | Cover | Stainless Steel (ASTM A 351, Grade CF8M) |
| 3 | Screen | Stainless Steel (304) |
| 4 | Gasket | Spiral Wound Stainless Steel (304) |
| 5 | Studs | Stainless Steel (ASTM A 193, Grade B8) |
| 6 | Nuts | Stainless Steel (ASTM A 194, Grade 8) |

*Optional Body Materials Available in 304 and 400 Series SS, Alloy 20, Hastelloy, Inconel, Monel and Stellite.

STANDARD SCREENS SUPPLIED

| SIZE | | SCREEN PERFORATION | | | |
|------|----|--------------------|-----------|-------------|-----------|
| | | FOR STEAM | OPEN AREA | FOR LIQ-UID | OPEN AREA |
| in | mm | in | mm | in | mm |

Standard screens supplied are for **steam service**, unless otherwise specified.
Options: Other perforations, meshes, and screen materials are available.

| SIZE | | DIMENSIONS | | | | | | | | WEIGHTS | |
|-------|----|------------|-----|--------|-----|-------|----|-----|----|---------|-----|
| | | A | | B | | C | | D | | | |
| in | mm | in | mm | in | mm | in | mm | in | mm | lbs | kgs |
| 1/2 | 15 | 3-15/16 | 100 | 3 | 76 | 0.855 | 22 | 3/8 | 10 | 10 | 5 |
| 3/4 | 20 | 4-1/4 | 108 | 3-3/4 | 95 | 1.065 | 27 | 1/2 | 13 | 12 | 5 |
| 1 | 25 | 5 | 127 | 5 | 127 | 1.330 | 34 | 1/2 | 13 | 15 | 7 |
| 1-1/4 | 32 | 8-3/8 | 213 | 5-1/2 | 140 | 1.675 | 43 | 1/2 | 13 | 22 | 10 |
| 1-1/2 | 40 | 8-3/8 | 213 | 5-1/2 | 140 | 1.915 | 49 | 1/2 | 13 | 22 | 10 |
| 2 | 50 | 9-5/16 | 237 | 7-3/8 | 187 | 2.406 | 61 | 5/8 | 16 | 30 | 14 |
| 2-1/2 | 65 | 12 | 305 | 10-1/2 | 267 | 2.906 | 74 | 5/8 | 16 | 50 | 23 |
| 3 | 80 | 12 | 305 | 10-1/2 | 267 | 3.535 | 90 | 5/8 | 16 | 50 | 23 |

Certified dimensional drawings are available upon request.

†This table reflects only the nearest metric equivalents.

FLOW COEFFICIENTS

| Size | C _v | Size | C _v | Size | C _v |
|------|----------------|--------|----------------|--------|----------------|
| 1/2" | 9 | 1-1/4" | 45 | 2-1/2" | 129 |
| 3/4" | 18 | 1-1/2" | 60 | 3" | 170 |
| 1" | 30 | 2" | 98 | | |

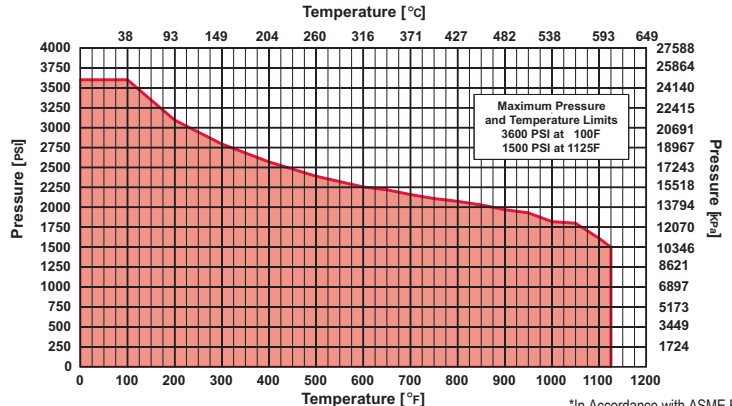
TOTAL SCREEN AREA

| Size | (in ²) | Size | (in ²) | Size | (in ²) |
|------|--------------------|--------|--------------------|--------|--------------------|
| 1/2" | 5.97 | 1-1/4" | 27.94 | 2-1/2" | 77.80 |
| 3/4" | 9.73 | 1-1/2" | 27.94 | 3" | 79.48 |
| 1" | 17.55 | 2" | 38.08 | | |

*See DETERMINING RATIOS on page S5 of the Strainer Information Section for calculating NET FREE AREA of the screen to inside pipe area.

PRESSURE vs. TEMPERATURE CHART

1500# Threaded & Socket Weld Stainless Steel (ASTM A 351, Grade CF8M)



*In Accordance with ASME B16.34

Style SSA-7

Y-Strainer

Stainless Steel (ASTM A 351, Grade CF8M)

150 lb. & 300 lb. Flanged



Cast 316 Stainless Steel Y-Strainer

APPLICATIONS

Steam, water, oil or gas where protection from foreign matter in a pipeline is required.

CONSTRUCTION

The Keckley Style SSA-7 strainers are constructed from rugged 316 stainless steel castings and are machined to exacting specifications. These bodies have drilled flanges that are in accordance with ASME B16.5. All flanges come standard with back-faced bolt holes.

FEATURES

The Keckley Style SSA-7 strainer features a machined groove in both the body and cover for proper screen alignment and to ensure accurate reseating when servicing is required. The gasket is 304 stainless steel spiral wound and is compressed between the body and cover (for maximum strength and durability) and designed for high pressure and high temperature service. All Keckley Style SSA-7 strainers have cap screws and can be furnished with a stainless steel blow-off plug upon request.

Blind covers are available upon request.

SCREENS

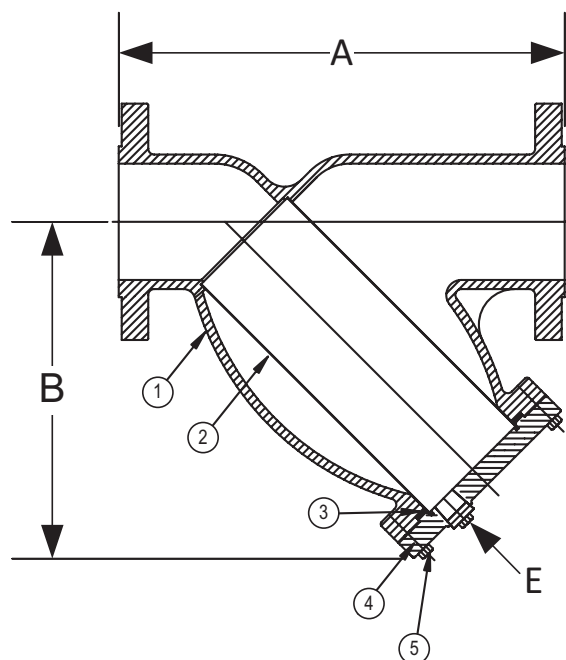
Standard perforated 304 stainless steel screens are spot welded along the seam for maximum strength. Different size perforations and meshes are available in stainless steel, monel, and brass to meet specific media requirements. If media is not indicated, screens for *steam* will be supplied.

SELF CLEANING

Self cleaning is accomplished by opening the valve or drain plug connected to the blow-off port. **Warning:** See Maintenance Instructions on page S6 of the Strainer Information Section for additional precautions and detailed information on servicing the strainer.

WORKING PRESSURES - NON SHOCK

| NOM. RATING | MEDIA | 1/2" to 12" | 15 mm to 300 mm |
|--------------------------------------|--------|------------------|------------------|
| 150# R.F. & D. (STANDARD FLANGE) | STEAM | 150 PSI @ 565°F | 1035 KPa @ 296°C |
| | W.O.G. | 275 PSI @ 100°F | 1897 KPa @ 38°C |
| NOM. RATING | MEDIA | 1/2" to 12" | 15 mm to 300 mm |
| 300# R.F. & D. (EX. HEAVY FLANGE) | STEAM | 300 PSI @ 1125°F | 2069 KPa @ 607°C |
| | W.O.G. | 720 PSI @ 100°F | 4966 KPa @ 38°C |



Style SSA-7

Y-Strainer, 150 lb. & 300 lb. Flanged
 Stainless Steel (ASTM A 351, Grade CF8M)

PARTS LIST

| ITEM | DESCRIPTION | MATERIAL |
|------|--------------------|--|
| 1* | Body | Stainless Steel (ASTM A 351, Grade CF8M) |
| 2 | Screen | Stainless Steel (304) |
| 3 | Gasket | Spiral Wound Stainless Steel (304) |
| 4 | Cover | Stainless Steel (ASTM A 351, Grade CF8M) |
| 5 | Hex Head Cap Screw | Stainless Steel (ASTM A 193, Grade B8) |

Optional: Blow-off Plug, Stainless Steel (304).

*Optional Body Materials Available in 304 and 400 Series SS, Alloy 20, Hastelloy, Inconel, Monel and Stellite.

STANDARD SCREENS SUPPLIED

| SIZE | | | SCREEN PERFORATION | | | | | |
|----------|------------|----|--------------------|-----|-----------|-------------|-----|-----------|
| | | | FOR STEAM | | OPEN AREA | FOR LIQ-UID | | OPEN AREA |
| in | mm | | in | mm | | in | mm | |
| 1/2 to 4 | 15 to 100 | 28 | 3/64 | 1.2 | 33% | 1/16 | 1.6 | 30% |
| 5 to 10 | 125 to 250 | 22 | 3/64 | 1.2 | 33% | 1/8 | 3.2 | 43% |

Standard screens supplied are for **steam service**, unless otherwise specified.
 Options: Other perforations, meshes, and screen materials are available.

| SIZE | | DIMENSIONS | | | | | | | | | | WEIGHTS | | | |
|-------|-----|------------|-----|---------|-----|---------|-----|---------|-----|-------------|----|---------|--------|------|--------|
| | | A | | | | B | | | | E | | | | | |
| | | 150# | | 300# | | 150# | | 300# | | 150# & 300# | | 150# | | 300# | |
| in | mm | in | mm | in | mm | in | mm | in | mm | in | mm | lbs | kgs | lbs | kgs |
| 1/2 | 15 | 6-1/2 | 165 | 6-1/8 | 156 | 3-3/4 | 95 | 3-3/4 | 95 | 3/8 | 10 | 7 | 3.02 | 8 | 3.45 |
| 3/4 | 20 | 7-3/8 | 187 | 7-3/4 | 197 | 4-1/4 | 108 | 4-1/4 | 108 | 1/2 | 15 | 10 | 4.46 | 13 | 5.68 |
| 1 | 25 | 7-3/8 | 187 | 7-7/8 | 200 | 4-1/4 | 108 | 4-1/4 | 108 | 1/2 | 15 | 10 | 4.28 | 13 | 5.59 |
| 1-1/4 | 32 | 7 | 178 | 8-1/8 | 206 | 5-1/8 | 130 | 5-1/8 | 130 | 1/2 | 15 | 13 | 5.86 | 21 | 9.28 |
| 1-1/2 | 40 | 7-1/8 | 181 | 8-1/4 | 210 | 5-1/8 | 130 | 5-1/8 | 130 | 1/2 | 15 | 14 | 6.20 | 21 | 9.37 |
| 2 | 50 | 7-7/8 | 200 | 9-1/2 | 241 | 6 | 152 | 6 | 152 | 1/2 | 15 | 23 | 10.15 | 27 | 11.83 |
| 2-1/2 | 65 | 9-3/4 | 248 | 10-3/8 | 264 | 7 | 178 | 7 | 178 | 1 | 25 | 36 | 16.16 | 41 | 18.53 |
| 3 | 80 | 10-1/16 | 256 | 12 | 305 | 7-7/16 | 189 | 7-5/16 | 186 | 1 | 25 | 40 | 17.76 | 56 | 25.06 |
| 4 | 100 | 12-1/8 | 308 | 14-1/2 | 368 | 8-15/16 | 227 | 8-15/16 | 227 | 1-1/2 | 40 | 61 | 27.26 | 95 | 42.83 |
| 5 | 125 | 15-1/2 | 394 | 19-5/16 | 491 | 13-1/32 | 331 | 13-1/32 | 331 | 2 | 50 | 101 | 45.58 | 189 | 85.72 |
| 6 | 150 | 18-1/2 | 470 | 19-5/16 | 491 | 13-1/4 | 337 | 13-1/4 | 337 | 2 | 50 | 134 | 60.72 | 189 | 85.57 |
| 8 | 200 | 21-3/8 | 543 | 23-3/8 | 594 | 15-1/2 | 394 | 15-1/2 | 394 | 2 | 50 | 224 | 101.30 | 320 | 144.91 |
| 10 | 250 | 26 | 660 | 27-3/8 | 695 | 18-7/16 | 468 | 18-7/16 | 468 | 2 | 50 | 326 | 147.49 | 481 | 218.01 |
| 12 | 300 | 29-7/8 | 759 | 32 | 813 | 21-5/8 | 549 | 21-5/8 | 549 | 2 | 50 | 622 | 282.08 | 839 | 380.12 |
| 14 | 350 | 34-1/2 | 876 | 36 | 914 | 25 | 635 | 25 | 635 | 2 | 50 | 791 | 358.62 | 1017 | 460.96 |

Certified dimensional drawings are available upon request.

†This table reflects only the nearest metric equivalents.

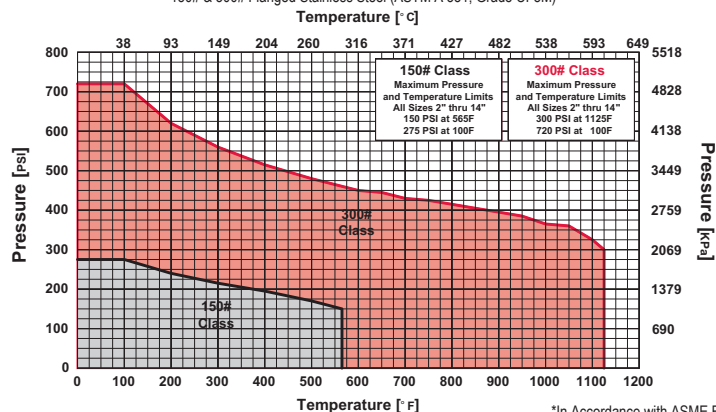
| TOTAL SCREEN AREA | | | | | |
|-------------------|--------------------|--------|--------------------|------|--------------------|
| Size | (in ²) | Size | (in ²) | Size | (in ²) |
| 1/2" | 6.46 | 1-1/2" | 18.68 | 4" | 91.89 |
| 3/4" | 12.32 | 2" | 30.28 | 5" | 209.41 |
| 1" | 12.32 | 2-1/2" | 46.91 | 6" | 241.18 |
| 1-1/4" | 18.68 | 3" | 57.62 | 8" | 342.86 |

(Total screen area listed for 150 lb. class only)

*See DETERMINING RATIOS on page S5 of the Strainer Information Section for calculating NET FREE AREA of the screen to inside pipe area.

PRESSURE vs. TEMPERATURE CHART

150# & 300# Flanged Stainless Steel (ASTM A 351, Grade CF8M)



*In Accordance with ASME B16.5

Style SSA

Y-Strainer

Stainless Steel (ASTM A 351, Grade CF8M)

600 lb. Flanged



Cast 316 Stainless Steel Y-Strainer

APPLICATIONS

Steam, water, oil or gas where protection from foreign matter in a pipeline is required.

CONSTRUCTION

The Keckley Style SSA strainers are constructed from rugged 316 stainless steel castings and are machined to exacting specifications. These bodies have drilled flanges that are in accordance with ASME B16.5. All flanges come standard with back-faced bolt holes.

FEATURES

The Keckley Style SSA strainer features a machined groove in both the body and cover for proper screen alignment and to ensure accurate reseating when servicing is required. The gasket is 304 stainless steel spiral wound and is compressed between the body and cover (for maximum strength and durability) and designed for high pressure and high temperature service. All Keckley Style SSA strainers have cap screws and can be furnished with a stainless steel blow-off plug upon request.

Blind covers are available upon request.

SCREENS

Standard perforated 304 stainless steel screens are spot welded along the seam for maximum strength. Different size perforations and meshes are available in stainless steel, monel, and brass to meet specific media requirements. If media is not indicated, screens for *steam* will be supplied.

SELF CLEANING

Self cleaning is accomplished by opening the valve or drain plug connected to the blow-off port. **Warning:** See Maintenance Instructions on page S6 of the Strainer Information Section for additional precautions and detailed information on servicing the strainer.

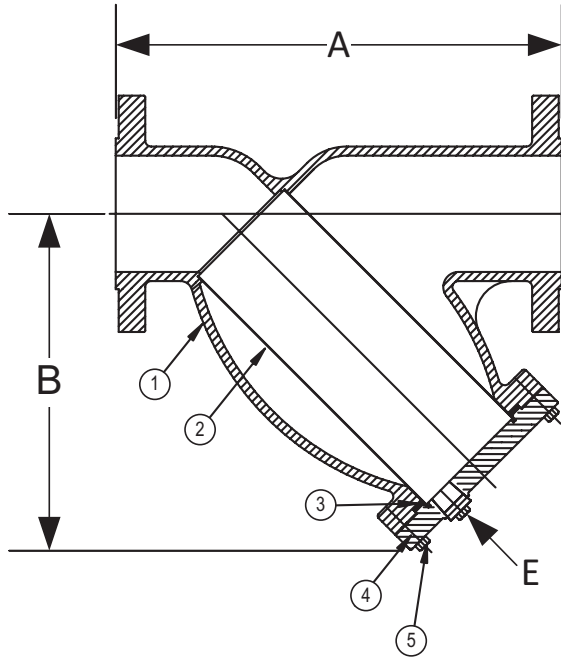
WORKING PRESSURES - NON SHOCK

| NOM. RATING | MEDIA | 1/2" to 12" | 15 mm to 300 mm |
|----------------------------|--------|------------------|------------------|
| 600# R.F. & D. (FLANGE) | STEAM | 600 PSI @ 1125°F | 4138 KPa @ 607°C |
| | W.O.G. | 1440 PSI @ 100°F | 9932 KPa @ 38°C |

Style SSA

Y-Strainer, 600 lb. Flanged

Stainless Steel (ASTM A 351, Grade CF8M)



PARTS LIST

| ITEM | DESCRIPTION | MATERIAL |
|------|--------------------|--|
| 1 | Body | Stainless Steel (ASTM A 351, Grade CF8M) |
| 2 | Screen | Stainless Steel (304) |
| 3 | Gasket | Spiral Wound Stainless Steel (304) |
| 4 | Cover | Stainless Steel (ASTM A 351, Grade CF8M) |
| 5 | Hex Head Cap Screw | Stainless Steel (ASTM A 193, Grade B8) |

Optional: Blow-off Plug, Stainless Steel (304).

*Optional Body Materials Available in 304 and 400 SS, Alloy 20, Hastelloy, Inconel, Monel and Stellite.

STANDARD SCREENS SUPPLIED

| SIZE | | | SCREEN PERFORATION | | | | | |
|---------|------------|----|--------------------|-----|-----------|-------------|-----|-----------|
| | | | FOR STEAM | | OPEN AREA | FOR LIQ-UID | | OPEN AREA |
| in | mm | | in | mm | | in | mm | |
| 2 to 4 | 50 to 100 | 28 | 3/64 | 1.2 | 33% | 1/16 | 1.6 | 30% |
| 5 to 10 | 125 to 250 | 22 | 3/64 | 1.2 | 33% | 1/8 | 3.2 | 43% |

Standard screens supplied are for **steam service**, unless otherwise specified.

Options: Other perforations, meshes, and screen materials are available.

| SIZE | | DIMENSIONS | | | | | | WEIGHTS | |
|-------|-----|------------|------|--------|-----|-------|----|---------|--------|
| | | A | | B | | E | | | |
| in | mm | in | mm | in | mm | in | mm | lbs | kgs |
| 1/2 | 15 | 6-5/8 | 168 | 3-1/2 | 89 | 3/8 | 10 | 15 | 6.80 |
| 3/4 | 20 | 8-3/8 | 213 | 3-3/4 | 95 | 1/2 | 15 | 20 | 9.07 |
| 1 | 25 | 8-3/8 | 213 | 3-3/4 | 95 | 1/2 | 15 | 20 | 9.07 |
| 1-1/4 | 32 | 10-1/8 | 257 | 5-1/2 | 140 | 1/2 | 15 | 27 | 12.25 |
| 1-1/2 | 40 | 10-1/4 | 360 | 5-1/2 | 140 | 1/2 | 15 | 27 | 12.25 |
| 2 | 50 | 11 | 279 | 7 | 178 | 1/2 | 15 | 31 | 13.83 |
| 2-1/2 | 65 | 12 | 305 | 8-1/4 | 210 | 1 | 25 | 49 | 21.92 |
| 3 | 80 | 13-1/2 | 343 | 9-1/4 | 235 | 1 | 25 | 63 | 28.17 |
| 4 | 100 | 18 | 457 | 12-1/2 | 318 | 1-1/2 | 40 | 127 | 57.53 |
| 6 | 150 | 25-5/8 | 651 | 20 | 508 | 2 | 50 | 339 | 153.51 |
| 8 | 200 | 31-3/4 | 806 | 24 | 610 | 2 | 50 | 748 | 338.84 |
| 10 | 250 | 37-3/4 | 959 | 28-1/2 | 724 | 2 | 50 | 1213 | 550.00 |
| 12 | 300 | 45-1/2 | 1156 | 34-1/2 | 876 | 2 | 50 | 1511 | 685.00 |

Larger sizes available upon request.

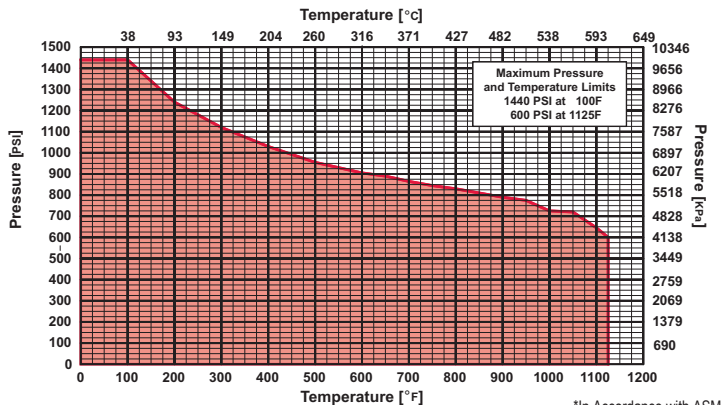
[†]This table reflects only the nearest metric equivalents.

| TOTAL SCREEN AREA | | | | | |
|-------------------|--------------------|--------|--------------------|------|--------------------|
| Size | (in ²) | Size | (in ²) | Size | (in ²) |
| 1/2" | -- | 1-1/2" | -- | 4" | 151.49 |
| 3/4" | -- | 2" | 44.17 | 6" | 416.73 |
| 1" | -- | 2-1/2" | 64.14 | 8" | 630.23 |
| 1-1/4" | -- | 3" | 77.63 | 10" | 894.52 |
| | | | | 12" | 1313.88 |

*See DETERMINING RATIOS on page S5 of the Strainer Information Section for calculating NET FREE AREA of the screen to inside pipe area.

PRESSURE vs. TEMPERATURE CHART

600# Flanged Stainless Steel (ASTM A 351, Grade CF8M)



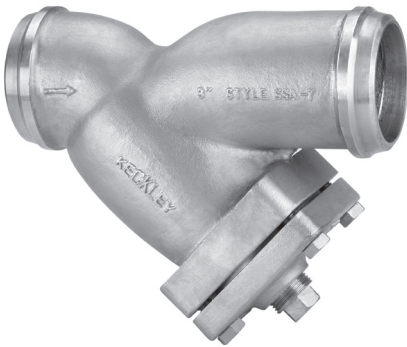
*In Accordance with ASME B16.5

Style SSA-7

Y-Strainer

Stainless Steel (ASTM A 351, Grade CF8M)

150 lb. & 300 lb. Butt Weld



Cast 316 Stainless Steel Y-Strainer

APPLICATIONS

Steam, water, oil or gas where protection from foreign matter in a pipeline is required.

CONSTRUCTION

The Keckley Style SSA-7 strainers are constructed from rugged 316 stainless steel castings and are machined to exacting specifications.

Style SSA-7 butt weld connections will be machined to match schedule 40 pipe.

FEATURES

The Keckley Style SSA-7 strainer features a machined groove in both the body and cover for proper screen alignment and to ensure accurate reseating when servicing is required. The gasket is 304 stainless steel spiral wound and is compressed between the body and cover (for maximum strength and durability) and designed for high pressure and high temperature service. All Keckley Style SSA-7 strainers have cap screws and can be furnished with a stainless steel blow-off plug upon request.

Blind covers are available upon request.

SCREENS

Standard perforated 304 stainless steel screens are spot welded along the seam for maximum strength. Different size perforations and meshes are available in stainless steel, monel, and brass to meet specific media requirements. If media is not indicated, screens for *steam* will be supplied.

SELF CLEANING

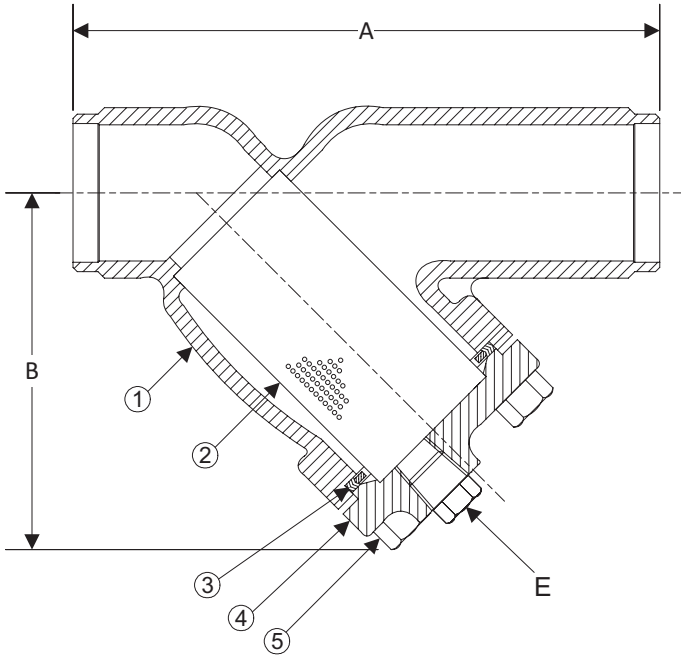
Self cleaning is accomplished by opening the valve or drain plug connected to the blow-off port. **Warning:** See Maintenance Instructions on page **S6** of the Strainer Information Section for additional precautions and detailed information on servicing the strainer.

WORKING PRESSURES - NON SHOCK

| NOM. RATING | MEDIA | 1/2" to 12" | 15 mm to 300 mm |
|------------------|--------|------------------|------------------|
| 150# (BUTT WELD) | STEAM | 150 PSI @ 565°F | 1035 KPa @ 296°C |
| | W.O.G. | 275 PSI @ 100°F | 1897 KPa @ 38°C |
| NOM. RATING | MEDIA | 1/2" to 12" | 15 mm to 300 mm |
| 300# (BUTT WELD) | STEAM | 300 PSI @ 1125°F | 2069 KPa @ 607°C |
| | W.O.G. | 720 PSI @ 100°F | 4977 KPa @ 38°C |

Style SSA-7

Y-Strainer, 150 lb. & 300 lb. Butt Weld
 Stainless Steel (ASTM A 351, Grade CF8M)



PARTS LIST

| ITEM | DESCRIPTION | MATERIAL |
|------|--------------------|--|
| 1* | Body | Stainless Steel (ASTM A 351, Grade CF8M) |
| 2 | Screen | Stainless Steel (304) |
| 3 | Gasket | Spiral Wound Stainless Steel (304) |
| 4 | Cover | Stainless Steel (ASTM A 351, Grade CF8M) |
| 5 | Hex Head Cap Screw | Stainless Steel (ASTM A 193, Grade B8) |

Optional: Blow-off Plug, Stainless Steel (304).

*Optional Body Materials Available in 304 and 400 Series SS, Alloy 20, Hastelloy, Inconel, Monel and Stellite.

STANDARD SCREENS SUPPLIED

| SIZE | | | SCREEN PERFORATION | | | | | |
|----------|------------|----|--------------------|-----|-----------|-------------|-----|-----------|
| | | | FOR STEAM | | OPEN AREA | FOR LIQ-UID | | OPEN AREA |
| in | mm | | in | mm | | in | mm | |
| 1/2 to 4 | 15 to 100 | 28 | 3/64 | 1.2 | 33% | 1/16 | 1.6 | 30% |
| 5 to 10 | 125 to 250 | 22 | 3/64 | 1.2 | 33% | 1/8 | 3.2 | 43% |

Standard screens supplied are for **steam service**, unless otherwise specified.
 Options: Other perforations, meshes, and screen materials are available.

| SIZE | | DIMENSIONS | | | | | | | | | | WEIGHTS | | | |
|-------|-----|------------|-----|---------|-----|---------|-----|---------|-----|-------------|----|---------|--------|------|--------|
| | | A | | | | B | | | | E | | | | | |
| | | 150# | | 300# | | 150# | | 300# | | 150# & 300# | | 150# | | 300# | |
| in | mm | in | mm | in | mm | in | mm | in | mm | in | mm | lbs | kgs | lbs | kgs |
| 1/2 | 15 | 6-1/2 | 165 | 6-1/8 | 156 | 3-3/4 | 95 | 3-3/4 | 95 | 3/8 | 10 | 6 | 2.72 | 6 | 2.72 |
| 3/4 | 20 | 7-3/8 | 187 | 7-3/4 | 197 | 4-1/4 | 108 | 4-1/4 | 108 | 1/2 | 15 | 8 | 3.63 | 10 | 4.53 |
| 1 | 25 | 7-3/8 | 187 | 7-7/8 | 200 | 4-1/4 | 108 | 4-1/4 | 108 | 1/2 | 15 | 8 | 3.63 | 10 | 4.53 |
| 1-1/4 | 32 | 7 | 178 | 8-1/8 | 206 | 5-1/8 | 130 | 5-1/8 | 130 | 1/2 | 15 | 10 | 4.53 | 15 | 6.80 |
| 1-1/2 | 40 | 7-1/8 | 181 | 8-1/4 | 210 | 5-1/8 | 130 | 5-1/8 | 130 | 1/2 | 15 | 11 | 4.99 | 15 | 6.80 |
| 2 | 50 | 7-7/8 | 200 | 9-1/2 | 241 | 6 | 152 | 6 | 152 | 1/2 | 15 | 14 | 5.93 | 16 | 6.92 |
| 2-1/2 | 65 | 9-3/4 | 248 | 10-3/8 | 264 | 7 | 178 | 7 | 178 | 1 | 25 | 19 | 8.56 | 23 | 10.06 |
| 3 | 80 | 10-1/16 | 256 | 12 | 305 | 7-7/16 | 189 | 7-5/16 | 186 | 1 | 25 | 21 | 9.46 | 50 | 22.65 |
| 4 | 100 | 12-1/8 | 308 | 14-1/2 | 368 | 8-15/16 | 227 | 8-15/16 | 227 | 1-1/2 | 40 | 37 | 16.77 | 57 | 25.80 |
| 5 | 125 | 15-1/2 | 394 | 19-5/16 | 491 | 13-1/32 | 331 | 13-1/32 | 331 | 2 | 50 | 84 | 37.85 | 145 | 65.36 |
| 6 | 150 | 18-1/2 | 470 | 19-5/16 | 491 | 13-1/4 | 337 | 13-1/4 | 337 | 2 | 50 | 104 | 46.87 | 145 | 65.36 |
| 8 | 200 | 21-3/8 | 543 | 23-3/8 | 594 | 15-1/2 | 394 | 15-1/2 | 394 | 2 | 50 | 149 | 67.51 | 247 | 111.80 |
| 10 | 250 | 26 | 660 | 27-3/8 | 695 | 18-7/16 | 468 | 18-7/16 | 468 | 2 | 50 | 261 | 118.25 | 346 | 156.52 |
| 12 | 300 | 29-7/8 | 759 | 32 | 813 | 21-5/8 | 549 | 21-5/8 | 549 | 2 | 50 | 452 | 204.68 | 575 | 260.58 |

Certified dimensional drawings are available upon request.

*This table reflects only the nearest metric equivalents.

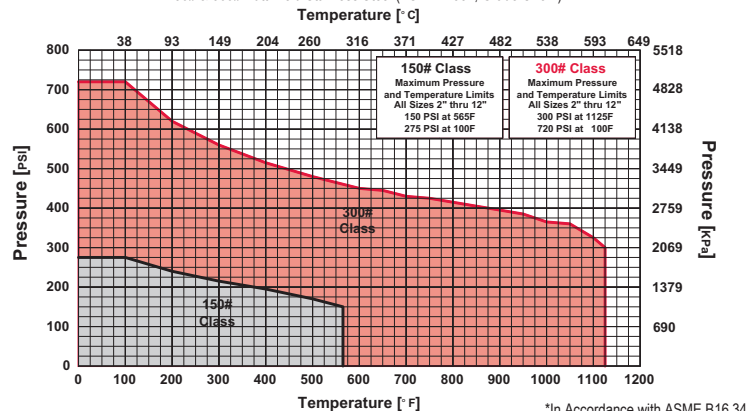
TOTAL SCREEN AREA

| Size | (in ²) | Size | (in ²) | Size | (in ²) | Size | (in ²) |
|--------|--------------------|--------|--------------------|------|--------------------|---|--------------------|
| 1/2" | 6.46 | 1-1/2" | 18.68 | 4" | 91.89 | 10" | 532.80 |
| 3/4" | 12.32 | 2" | 30.28 | 5" | 209.41 | 12" | 600.71 |
| 1" | 12.32 | 2-1/2" | 46.91 | 6" | 241.18 | (Total screen area listed for 150 lb. class only) | |
| 1-1/4" | 18.68 | 3" | 57.62 | 8" | 342.86 | | |

*See DETERMINING RATIOS on page S5 of the Strainer Information Section for calculating NET FREE AREA of the screen to inside pipe area.

PRESSURE vs. TEMPERATURE CHART

150# & 300# Butt Weld Stainless Steel (ASTM A 351, Grade CF8M)

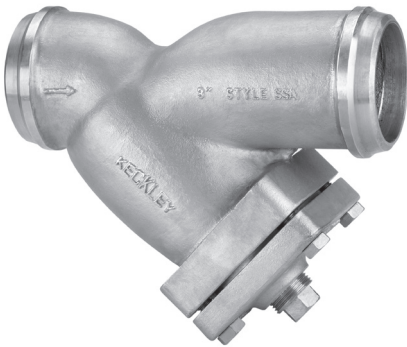


Style SSA

Y-Strainer

Stainless Steel (ASTM A 351, Grade CF8M)

600 lb. Butt Weld



Cast 316 Stainless Steel Y-Strainer

APPLICATIONS

Steam, water, oil or gas where protection from foreign matter in a pipeline is required.

CONSTRUCTION

The Keckley Style SSA strainers are constructed from rugged 316 stainless steel castings and are machined to exacting specifications.

Style SSA 600 lb. butt weld connections will be machined to match schedule 80 pipe unless otherwise specified.

FEATURES

The Keckley Style SSA strainer features a machined groove in both the body and cover for proper screen alignment and to ensure accurate reseating when servicing is required. The gasket is 304 stainless steel spiral wound and is compressed between the body and cover (for maximum strength and durability) and designed for high pressure and high temperature service. All Keckley Style SSA strainers have cap screws and can be furnished with a stainless steel blow-off plug upon request.

Blind covers are available upon request.

SCREENS

Standard perforated 304 stainless steel screens are spot welded along the seam for maximum strength. Different size perforations and meshes are available in stainless steel, monel, and brass to meet specific media requirements. If media is not indicated, screens for *steam* will be supplied.

SELF CLEANING

Self cleaning is accomplished by opening the valve or drain plug connected to the blow-off port. **Warning:** See Maintenance Instructions on page **S6** of the Strainer Information Section for additional precautions and detailed information on servicing the strainer.

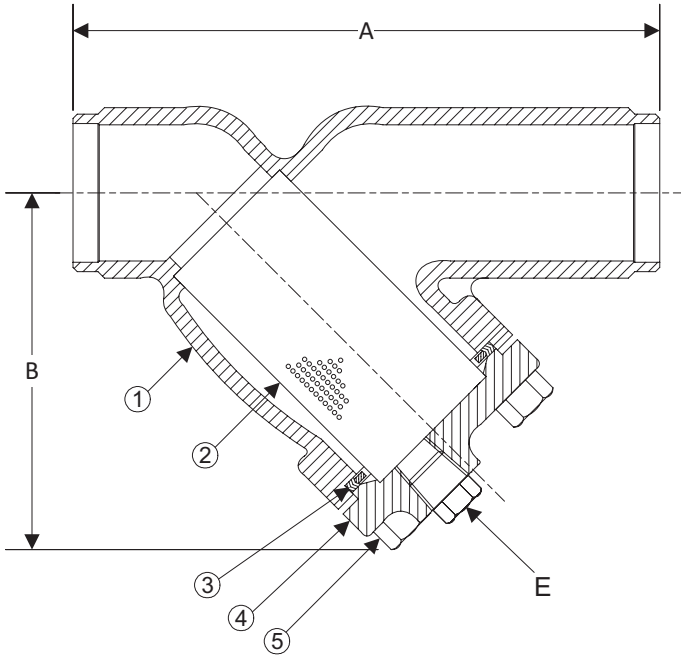
WORKING PRESSURES - NON SHOCK

| NOM. RATING | MEDIA | 1/2" to 12" | 15 mm to 300 mm |
|------------------|--------|------------------|------------------|
| 600# (BUTT WELD) | STEAM | 600 PSI @ 1125°F | 4138 KPa @ 607°C |
| | W.O.G. | 1440 PSI @ 100°F | 9932 KPa @ 38°C |

Style SSA

Y-Strainer, 600 lb. Butt Weld

Stainless Steel (ASTM A 351, Grade CF8M)



PARTS LIST

| ITEM | DESCRIPTION | MATERIAL |
|------|--------------------|--|
| 1 | Body | Stainless Steel (ASTM A 351, Grade CF8M) |
| 2 | Screen | Stainless Steel (304) |
| 3 | Gasket | Spiral Wound Stainless Steel (304) |
| 4 | Cover | Stainless Steel (ASTM A 351, Grade CF8M) |
| 5 | Hex Head Cap Screw | Stainless Steel (ASTM A 193, Grade B8) |

Optional: Blow-off Plug, Stainless Steel (304).

*Optional Body Materials Available in 304 and 400 Series SS, Alloy 20, Hastelloy, Inconel, Monel and Stellite.

STANDARD SCREENS SUPPLIED

| SIZE | | | SCREEN PERFORATION | | | | | |
|---------|------------|----|--------------------|-----|-----------|-------------|-----|-----------|
| | | | FOR STEAM | | OPEN AREA | FOR LIQ-UID | | OPEN AREA |
| in | mm | | in | mm | | in | mm | |
| 2 to 4 | 50 to 100 | 28 | 3/64 | 1.2 | 33% | 1/16 | 1.6 | 30% |
| 5 to 10 | 125 to 250 | 22 | 3/64 | 1.2 | 33% | 1/8 | 3.2 | 43% |

Standard screens supplied are for **steam service**, unless otherwise specified.

Options: Other perforations, meshes, and screen materials are available.

| SIZE | | DIMENSIONS | | | | | | WEIGHTS | |
|-------|-----|------------|------|--------|-----|-------|----|---------|--------|
| | | A | | B | | E | | | |
| in | mm | in | mm | in | mm | in | mm | lbs | kgs |
| 1/2 | 15 | 6-5/8 | 168 | 3-1/2 | 89 | 3/8 | 10 | 9 | 4.08 |
| 3/4 | 20 | 8-3/8 | 213 | 3-3/4 | 95 | 1/2 | 15 | 11 | 4.99 |
| 1 | 25 | 8-3/8 | 213 | 3-3/4 | 95 | 1/2 | 15 | 11 | 4.99 |
| 1-1/4 | 32 | 10-1/8 | 257 | 5-1/2 | 140 | 1/2 | 15 | 13 | 5.89 |
| 1-1/2 | 40 | 10-1/4 | 360 | 5-1/2 | 140 | 1/2 | 15 | 13 | 5.89 |
| 2 | 50 | 11 | 279 | 7 | 178 | 1/2 | 15 | 15 | 6.80 |
| 2-1/2 | 65 | 12 | 305 | 8-1/4 | 210 | 1 | 25 | 30 | 13.60 |
| 3 | 80 | 13-1/2 | 343 | 9-1/4 | 235 | 1 | 25 | 33 | 14.97 |
| 4 | 100 | 18 | 457 | 12-1/2 | 318 | 1-1/2 | 40 | 77 | 34.93 |
| 6 | 150 | 25-5/8 | 651 | 20 | 508 | 2 | 50 | 217 | 98.43 |
| 8 | 200 | 31-3/4 | 806 | 24 | 610 | 2 | 50 | 386 | 175.09 |
| 10 | 250 | 37-3/4 | 959 | 28-1/2 | 724 | 2 | 50 | 668 | 303.00 |
| 12 | 300 | 45-1/2 | 1156 | 34-1/2 | 876 | 2 | 50 | 831 | 376.94 |

Larger sizes available upon request.

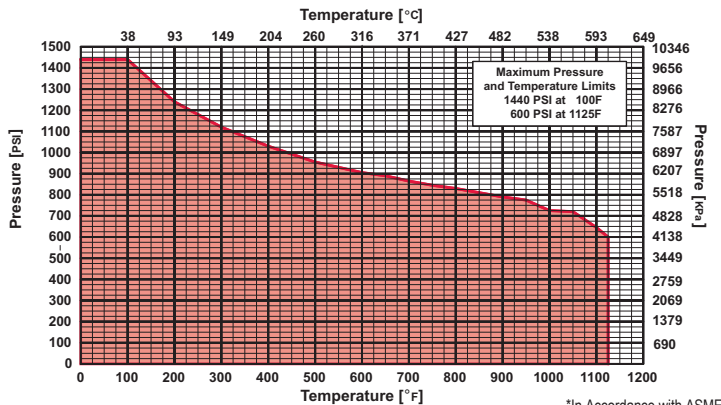
[†]This table reflects only the nearest metric equivalents.

| TOTAL SCREEN AREA | | | | | |
|-------------------|--------------------|--------|--------------------|------|--------------------|
| Size | (in ²) | Size | (in ²) | Size | (in ²) |
| 1/2" | -- | 1-1/2" | -- | 4" | 151.49 |
| 3/4" | -- | 2" | 44.17 | 6" | 416.73 |
| 1" | -- | 2-1/2" | 64.14 | 8" | 630.23 |
| 1-1/4" | -- | 3" | 77.63 | 10" | 894.52 |
| | | | | 12" | 1313.88 |

*See DETERMINING RATIOS on page S5 of the Strainer Information Section for calculating NET FREE AREA of the screen to inside pipe area.

PRESSURE vs. TEMPERATURE CHART

600# Butt Weld Stainless Steel (ASTM A 351, Grade CF8M)



*In Accordance with ASME B16.34

PRESSURE DROP CHART

Threaded “Y” Pattern Strainers (Styles B, BDI, E-150, F-150, F-300, SB, SB-7, SSB and SSB-7)

This pressure drop chart is based on the flow of clean water through the Keckley “Y” strainers listed above with screen perforations ranging from 3/64” through 1/8” and is additionally for use with those units equipped with a 20 mesh screen as standard.

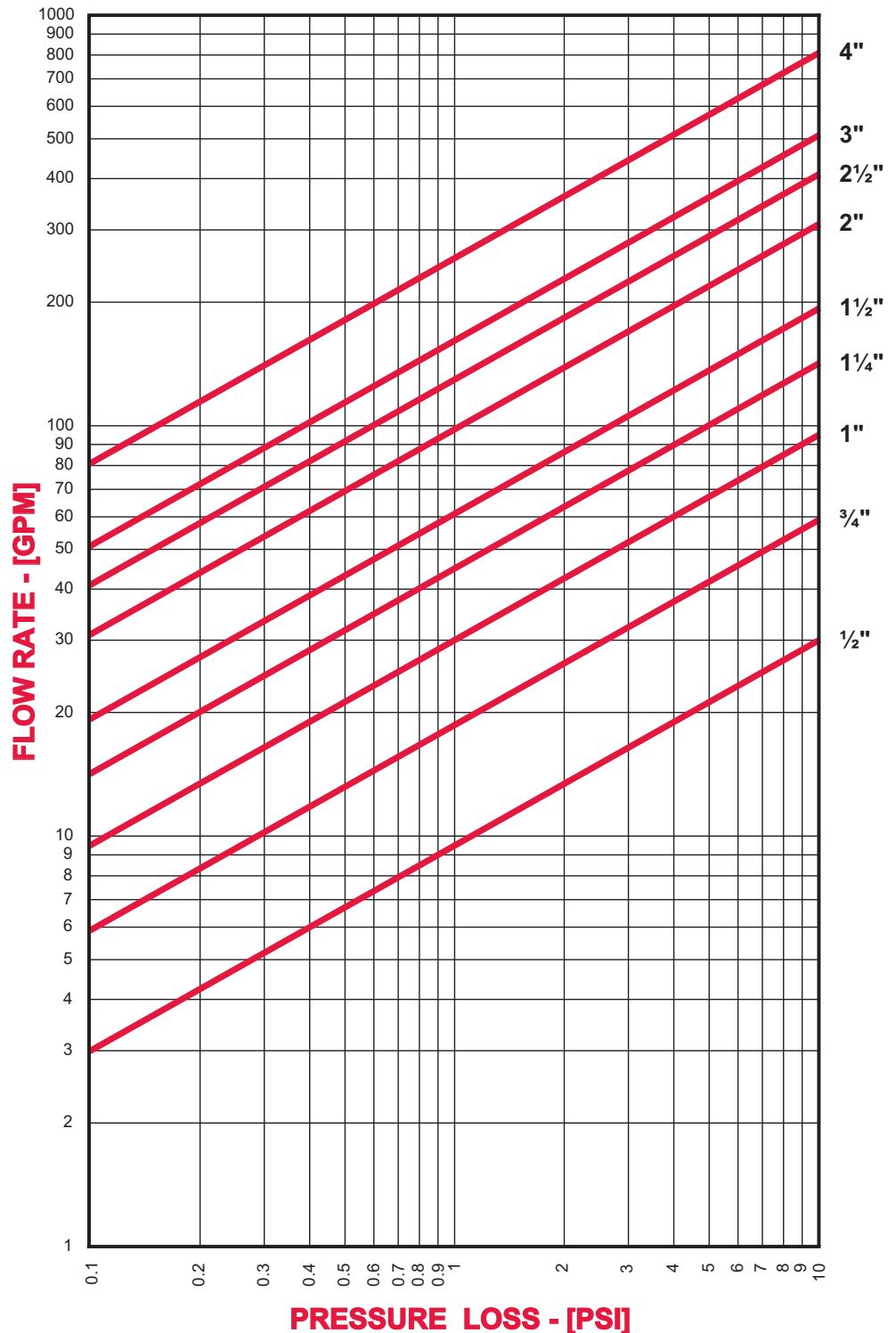
TO USE CHARTS:

Find your desired rate of flow (GPM) on the left hand side of the chart. Follow its corresponding horizontal line to the point where it intersects the diagonal line indicating the strainer pipe size. From this point of intersection, follow the vertical line down to the bottom of the chart to determine the approximate pressure drop.

CORRECTION FACTORS:

For finer mesh screens that are backed with a perforated sheet, multiply the pressure drops shown at right by the following:

| | |
|----------|-------|
| 40 mesh | x 1.2 |
| 60 mesh | x 1.4 |
| 80 mesh | x 1.6 |
| 100 mesh | x 1.7 |



PRESSURE DROP CHART

Flanged “Y” Pattern Strainers (Styles A, BA, BA-7, SA, SA-7, SSA and SSA-7)

This pressure drop chart is based on the flow of clean water through the Keckley “Y” strainers listed above with screen perforations ranging from 3/64” through 1/8”.

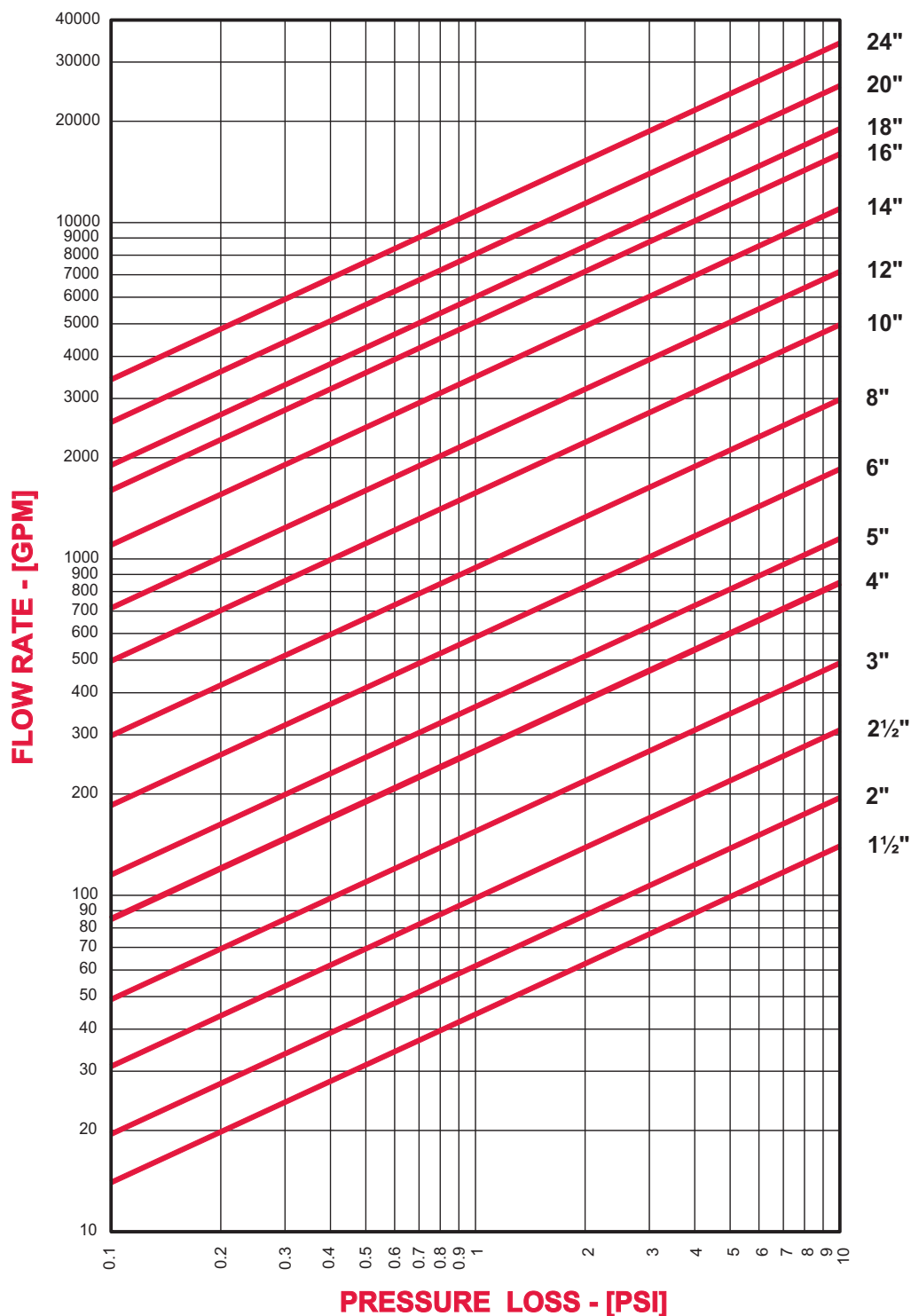
TO USE CHARTS:

Find your desired rate of flow (GPM) on the left hand side of the chart. Follow its corresponding horizontal line to the point where it intersects the diagonal line indicating the strainer pipe size. From this point of intersection, follow the vertical line down to the bottom of the chart to determine the approximate pressure drop.

CORRECTION FACTORS:

For finer mesh screens that are backed with a perforated sheet, multiply the pressure drops shown at right by the following:

| | |
|----------|-------|
| 40 mesh | x 1.2 |
| 60 mesh | x 1.4 |
| 80 mesh | x 1.6 |
| 100 mesh | x 1.7 |



PRESSURE DROP CHART

Threaded “Y” Pattern Strainers (Styles B7)

This pressure drop chart is based on the flow of clean water through the Keckley “Y” strainers listed above with screen perforations ranging from 3/64” through 1/8” and is additionally for use with those units equipped with a 20 mesh screen as standard.

TO USE CHARTS:

Find your desired rate of flow (GPM) on the left hand side of the chart. Follow its corresponding horizontal line to the point where it intersects the diagonal line indicating the strainer pipe size. From this point of intersection, follow the vertical line down to the bottom of the chart to determine the approximate pressure drop.

CORRECTION FACTORS:

For finer mesh screens that are backed with a perforated sheet, multiply the pressure drops shown at right by the following:

| | |
|----------|-------|
| 40 mesh | x 1.2 |
| 60 mesh | x 1.4 |
| 80 mesh | x 1.6 |
| 100 mesh | x 1.7 |

