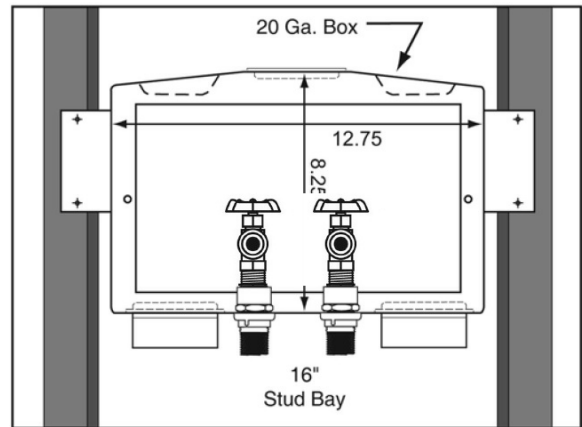
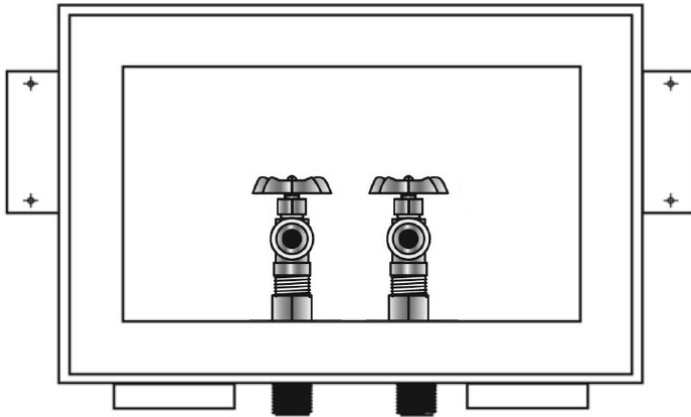


SPECIFICATION SUBMITTAL SHEET



"TT" SERIES DUAL OUTLET WHITE POWER COATED WMOB with Domestic Valves



Specifications:

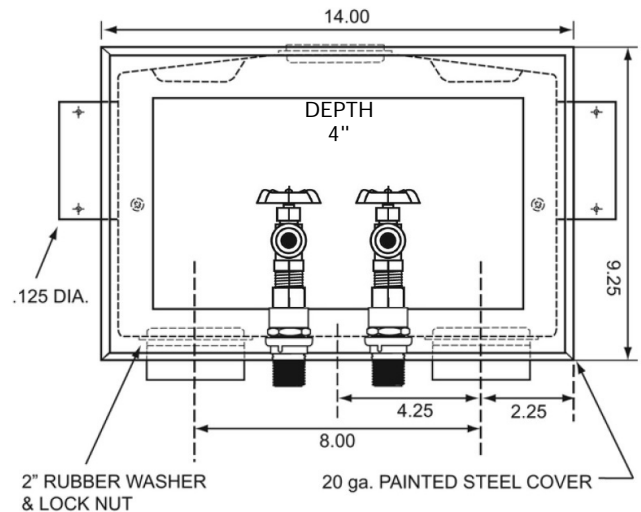
Furnish and install dual outlet white powder coated cold rolled steel washing machine outlet box. Unit shall be Guy Gray product code as manufactured by IPS Corp.

Box Material:

White Powder Coat on Cold Rolled Steel Finish
20 gauge box with 20 gauge faceplate

Valve & Drain Options:

Domestic Valve with 2" MIP/Sweat connection furnished. Slipnut, PVC or ABS drain and locknut kit included. Valves comply with ASME A112.18.1.



Item #	Product Description	Model #	Quantity
82340	Dual outlet w/2" Domestic Sweat Valve, 2" Slipnut Drain Kit	TT200	6
82342	Dual outlet w/2" Domestic Sweat Valve, 2" PVC Drain Fitting	TT200TPPVC	6
82346	Dual outlet w/2" Domestic Sweat Valve, 2" ABS Drain Fitting	TT200TPABS	6

