

# 400 CFH Commercial Gas Meter



## DESCRIPTION

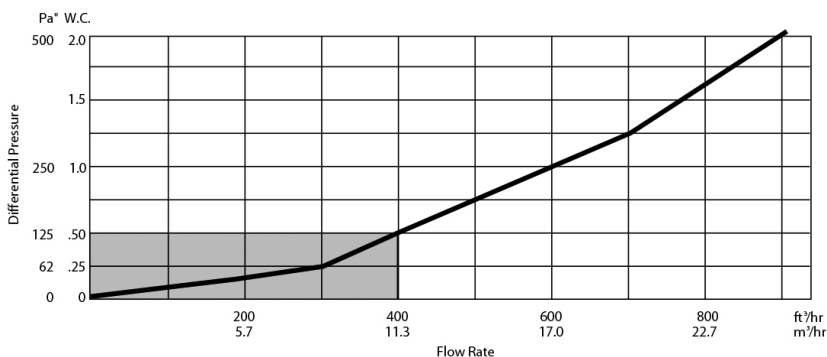
The 400 CFH Commercial Gas Meter uses proven, time-tested diaphragm meter technology in a 3-chamber design to provide accurate measurement across its respective flow range. Long life and low maintenance are assured by the combination of a self-lapping orbital valve, single convolution diaphragms, and lubrication-free bearings. Attention to design makes the meter compact and lightweight for its capacity rating. The 400 CFH Commercial Gas Meter is designed to be fully compatible with all volume and temperature-integrating instruments available on the market today.

The Easy Turn design allows 2 to 3 times more wrench swing than the competition—as much as a full 120 degrees for meters mounted directly against the wall, drastically simplifying installation.

## FEATURES

- 3-chamber design
- Wearless orbital valve
- One-piece, seamless, convoluted diaphragm
- Lubrication-free bearings
- EZ-VU adjustment port
- Instrumentation compatible
- Easy Turn top option for simple installation
- Easy handling
- Lightest 400 class meter
- AMR/AMI compatible
- Meets applicable ANSI B109.1 and ANSI B109.2 standards
- Industry Canada AG-0298 and AG-0385 approved
- State of New York Department of Public Service 91-G-0507, 96-G-0885

## CAPACITY AND PRESSURE LOSS

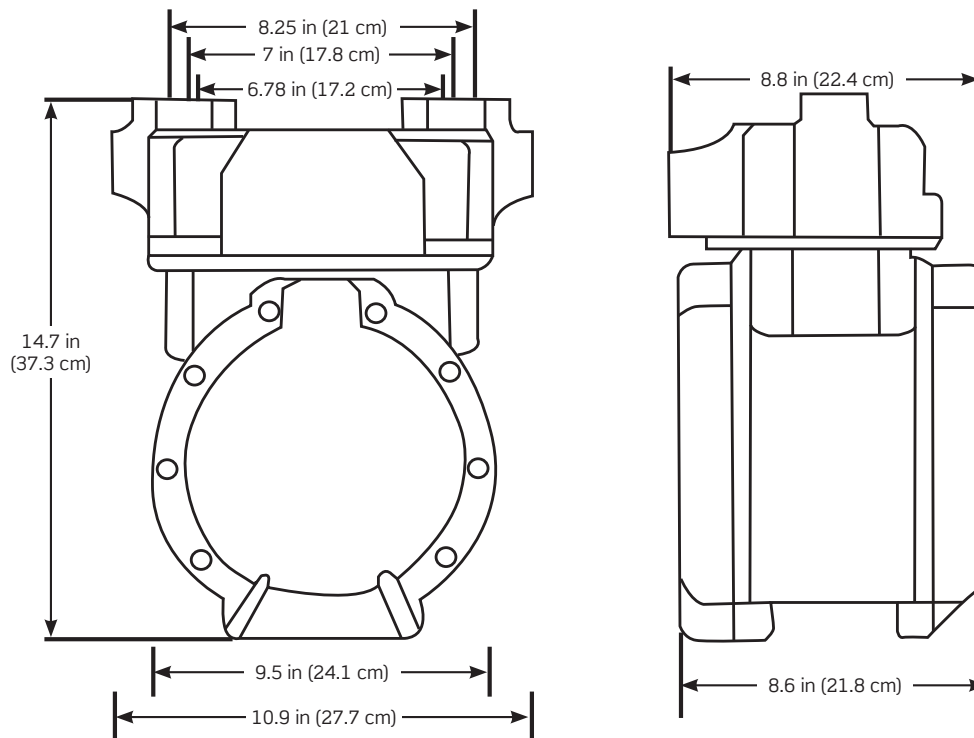


## PRODUCT DATA

### SPECIFICATIONS

Meter capacity	400 CFH @ 0.5 in (1.27 cm) w.c. Diff.
Hub, center-to-center	6-25/32 in, 7 in or 8.25 in (81 cm, 17.8 cm or 21 cm)
Hub sizes	20 LT, 30 LT, 45 LT, #4 Sprague
Meter type	(TC) Temperature Compensated or (NTC) Non-Temperature Compensated
Units	Imperial (cubic feet) or Metric (cubic meters)
Index drive	2 ft <sup>3</sup> /revolution (0.6 m <sup>3</sup> ); 50 cubic decimeters/revolution
Proving/test dials	ft <sup>3</sup> — 0.5 and 2 ft proving dials; m <sup>3</sup> — 10 dm <sup>3</sup> and 50 dm <sup>3</sup> proving dials
Tangent crank	9 revolutions/ft <sup>3</sup> or 0.111 ft <sup>3</sup> /revolution 3.2 revolutions/dm <sup>3</sup> or 0.32 l/revolution
Indexes	4 circle dial (ft <sup>3</sup> ) — Standard 7 in, 2 PSIG, 5 PSIG 4 digit direct read (ft <sup>3</sup> - standard pressure) 5 digit direct read (ft <sup>3</sup> or m <sup>3</sup> - standard pressure)
Meter M.A.O.P.	10 PSIG (25 PSIG optional)
Pulse transmitter	1 cubic ft/pulse
Operating temperature	-30° to 120° F (-34° to 49° C)
Surface treatment	ASA 49 gray polyester powder coat
Weight	14.1 lbs (6.4 kg)

### DIMENSIONS



### ORDERING INFORMATION

CAT. NO.	DESCRIPTION
GMP15-401	400 CFH Commercial Gas Meter with Temp Compensation and Pulse Output, includes 1 in or 1.5 in connector set

#### Leviton Manufacturing Co., Inc. Energy Management, Controls and Automation

20497 SW Teton Avenue, Tualatin, OR 97062 **tel** 800-736-6682 **fax** 503-404-5594 **tech line** (6:00AM-4:00PM PT Mon-Fri) 800-959-6004

#### Leviton Manufacturing Co., Inc. Global Headquarters

201 North Service Road, Melville, NY 11747-3138 **tel** 800-323-8920 **fax** 800-832-9538 **tech line** (8:30AM-7:00PM ET Mon-Fri) 800-824-3005

**Visit our Website at:** [www.leviton.com/verifeye](http://www.leviton.com/verifeye)

©2019 Leviton Manufacturing Co., Inc. All rights reserved. Subject to change without notice.

G-10497/D19-tb