

DIN Rail Enclosure—Small



DESCRIPTION

DIN Rail Enclosures are agency-listed cabinets designed to accept any equipment installable to ANSI-standard DIN rail. This allows highly flexible installations which can be custom tailored to your specific application without the need for expensive custom cabinetry. The Enclosures consist of a back cabinet with DIN rails and wiring space, a dead front that hides the wiring, and a locking cover. The dead front is specifically engineered to allow separation of powered wiring from the user, allowing the user to see the status of all installed equipment and operating test/bypass switches without being exposed to line voltage wiring and requiring Personal Protective Equipment (PPE). The locking door is provided to secure the panel. Leviton DIN Rail Enclosures are well suited for the Omni-Bus™ line of DIN rail mount architectural controls and can be provided either as empty enclosures for field installation of equipment or as factory pre-configured* enclosures with pre-installed modules and/or wiring for easy installation.

FEATURES

- Available in small, medium and large formats
- Small contains 1 rail (12.9"/33cm)
- Small is 14" x 10" x 4" (36cm x 26cm x 12cm)
- Can accommodate Omni-Bus modules or any other DIN rail mount load control or other 3rd party control equipment that is ANSI-standard
- Optionally pre-configured for easy installation and ensured compatibility*
- ETL and UL listed to UL and CSA Standards as an Industrial Controls Equipment Enclosure
- CE listed

APPLICATIONS

- Omni-Bus
- Third party ANSI-standard DIN rail installations
- DIN rail meters, such as the VeriEye™ Series 4000 and 4100

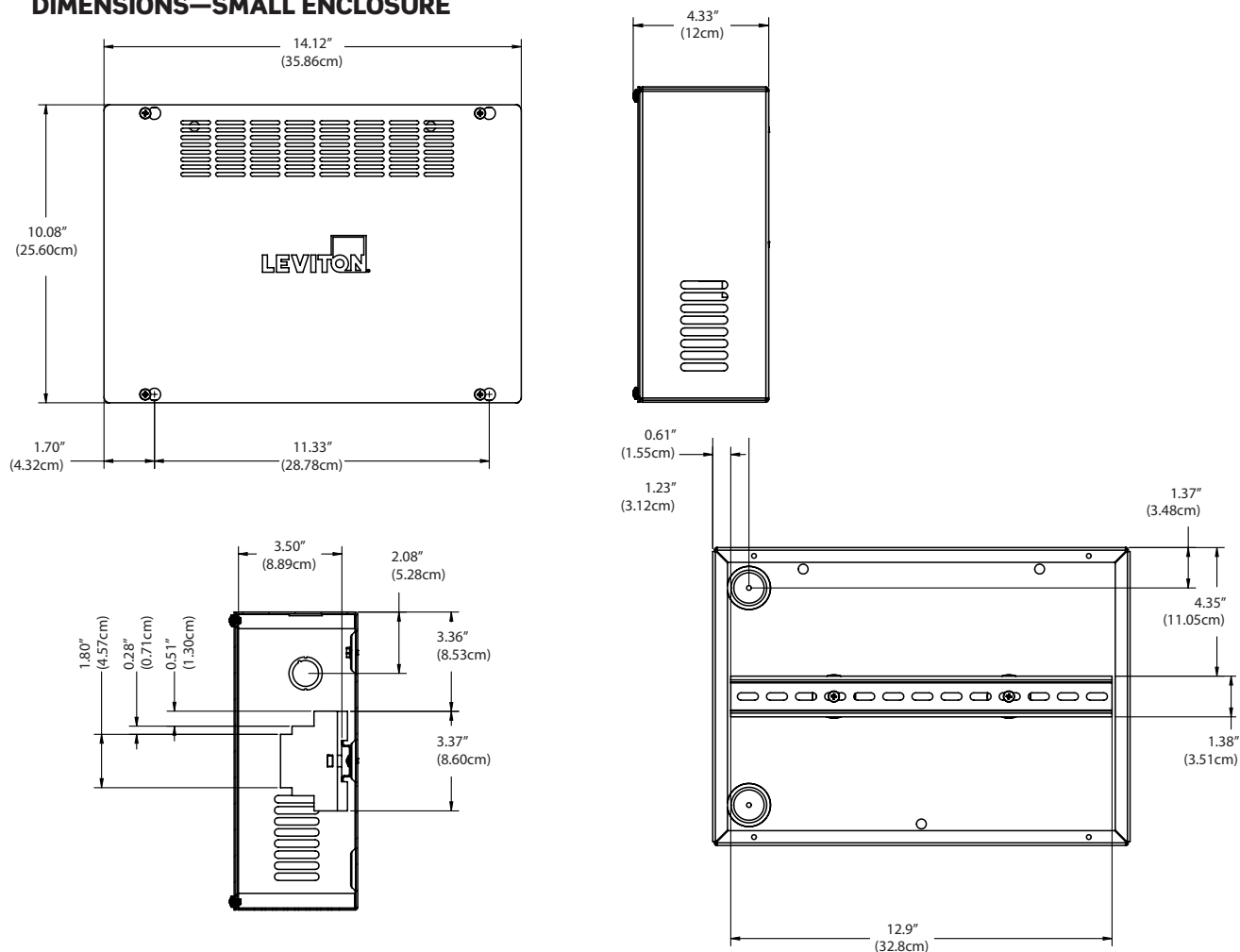
*Optionally pre-configured at the factory. Contact Leviton Quotes (EMCAQuotes@leviton.com) for ordering information.

Leviton Manufacturing Co., Inc. Energy Management, Controls and Automation

20497 SW Teton Avenue, Tualatin, OR 97062 tel 800-736-6682 fax 503-404-5594
© 2016 Leviton Manufacturing Co., Inc. All rights reserved. Subject to change without notice.

PRODUCT DATA

DIMENSIONS—SMALL ENCLOSURE



SPECIFICATIONS

ELECTRICAL	
Cabinet Dimensions	14" x 10" x 4" (36cm x 26cm x 12cm)
DIN Rail Quantity	1
DIN Rail Length	12.9" (33cm)
ENVIRONMENTAL	
Operating Temperature	32-104° F (0-122° C)
Storage Temperature	-4-185° F (-20-85° C)
Relative Humidity	0-90% non-condensing
OTHER	
Listings	ETL, cETL, CE, UL and RCM listed IP10 Rated for no water ingress protection
Warranty	5-Year Limited Warranty
Color	White

ORDERING INFORMATION

CAT. NO.	DESCRIPTION
DINRK-001	DIN Rail Rack Mount Enclosure, Small, 14" x 10" with (1) 12.9" (33cm) rail

NOTE: Optionally pre-configured at the factory. Contact Leviton Quotes (EMCAQuotes@leviton.com) for ordering information.

Leviton Manufacturing Co., Inc. Energy Management, Controls and Automation

20497 SW Teton Avenue, Tualatin, OR 97062 tel 800-736-6682 fax 503-404-5594 tech line (6:00AM-4:00PM PT Mon-Fri) 800-959-6004

Visit our Website at: www.leviton.com/emca

© 2016 Leviton Manufacturing Co., Inc. All rights reserved. Subject to change without notice.

G-9788A/D17-tb
REV APR 2017