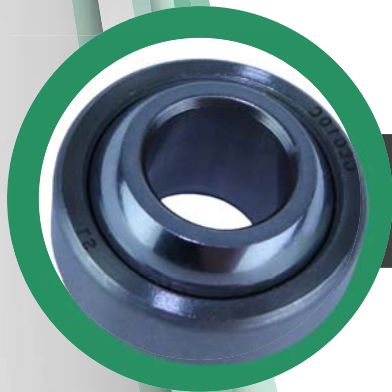


IDC SELECT®

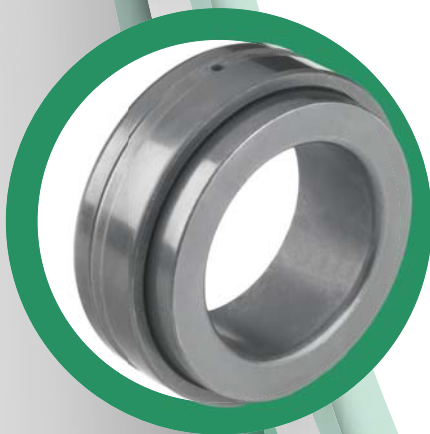
Spherical Plain Bearings

Quality Products. Right Price. Right Now.



IDC Select® spherical plain bearings are manufactured in a wide variety of materials to offer bearing solutions in almost any environment.

- IDC Select® offers a line of spherical bearings in inch and metric



- Models available include: GE-C, GE-ES, GEZ-ES, GEH-C, GEH-ES, GEG-ES, GSC-F, GAZ-SA, GEM-ES 2RS, GX-F and PTFE

- Designs offer misalignment, angular contact, an extended inner ring, case carburized, and enhanced lubrication groove

- Interchange with SKF®, INA/Elges™, Torrington™/Timken®, RBC®, NTN®, Sealmaster®, Aurora, and many others.



Ask your local AD Distributor about their broad inventory of high quality, competitively priced IDC Select® products.

®SKF is a registered trademark of the SKF Group.

™ INA/EGLES is a trademark of the Schaeffler Technologies AG & Co. KG

™ Torrington is a trademark of The Timken Company

® Timken is a registered trademark of The Timken Company

® RBC is a registered trademark of RBC Bearings Incorporated

® NTN is a registered trademark of NTN Bearing Corporation

® Sealmaster is a registered trademark of Regal Beloit Americas, Inc.

1-866-575-2025 | IDCselect.com