

Dual Quiet Fan/Light Control
Single Pole (One Location)
Cat. No. 66DF – LED/CFL 150W, Incandescent 300W, 1.5A Fan
120VAC, 60Hz
INSTALLATION INSTRUCTIONS

WARNINGS:

- **TO AVOID FIRE, SHOCK, OR DEATH; TURN OFF POWER** at circuit breaker or fuse and test that power is off before wiring or servicing fixture!
- To be installed and/or used in accordance with appropriate electrical codes and regulations.
- If you are unsure about any part of these instructions, consult an electrician.

CAUTIONS:

- To avoid overheating and possible damage to this device and other equipment, **DO NOT** use dimmer to control a receptacle, a motor- or a transformer-operated appliance, or any other lighting sources than those specified. Use only the fan control to control a fan.
- Use this device with **copper or copper clad wire only**.

CAUTIONS:

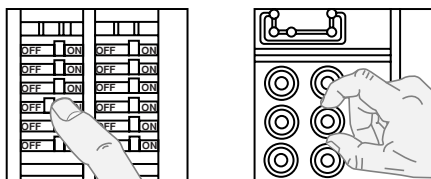
- Use with compatible **dimnable** LED, CFL bulbs, incandescent or 120V halogen fixtures only. For a complete list of compatible LED and CFL bulbs refer to www.leviton.com.
- When multiple bulbs are used with one dimmer **DO NOT** mix bulb types. All bulbs shall be either LED; CFL or incandescent. Using the same make/model of each bulb will enhance dimmer performance.
- This control is to be used with ceiling fans that are rated 120VAC, total load 1.5 amperes maximum
- For use on ceiling paddle fans with split-capacitor or shaded pole motors only. Please refer to manufacturer's instructions or rating label on the motor to confirm type. Use with any other types of motors or equipment may cause overheating and/or damage to the motors or equipment.

Tools needed to install your Dimmer

Slotted/Philips Screwdriver Electrical Tape Pliers
Pencil Cutters Ruler

INSTALLING YOUR FAN/LIGHT CONTROL

- Step 1** **WARNING:** To avoid fire, shock, or death; **TURN OFF POWER** at circuit breaker or fuse and test that power is off before wiring!

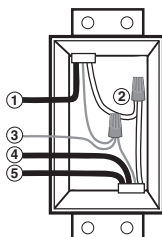


- Step 2** **Removing existing switch:** Remove existing wallplate and switch mounting screws. Carefully pull switch from wall box. **DO NOT** remove wires attached to the switch at this time.

Step 3 **Identifying your wiring application (most common)**

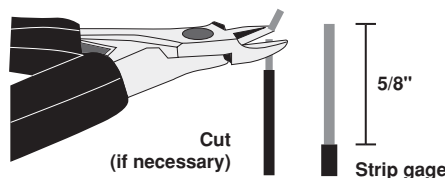
NOTE: If the wiring in the wall box does not resemble any of these configurations, consult an electrician

- Single Pole**
1. Line (Hot)
 2. Neutral
 3. Ground
 4. Load (Light)
 5. Load (Fan)



Step 4 **Preparing and connecting wires:**

- Make sure that the ends of the wires from the wall box are **straight (cut if necessary)**.
- Remove 5/8" (1.6 cm) of insulation from each wire in the wall box (shown).
- For Single-Pole Application, go to Step 5

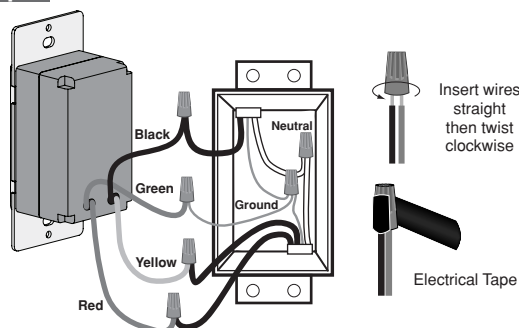


For non-standard wiring applications, refer to Wire Connector Size Chart

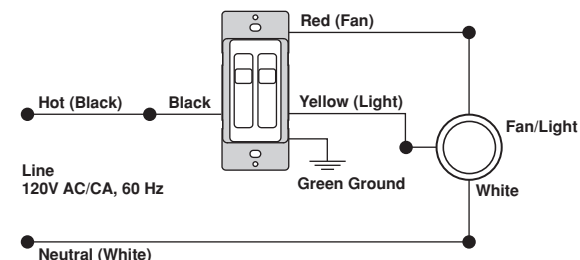
WIRE CONNECTOR / # OF COND. COMBINATION CHART

1- #12 w/ 1 to 3 #14, #16 or #18
2- #12 w/ 1 or 2 #16 or #18
1- #14 w/ 1 to 4 #16 or #18
2- #14 w/ 1 to 3 #16 or #18

Step 5 **Single-Pole Wiring Application:**



Wiring Diagram - Single Location Control Application

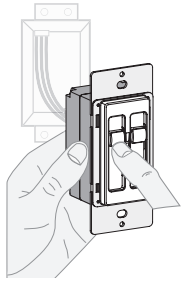


Connect wires per WIRING DIAGRAM as follows:

Screw wire connector on clockwise making sure no bare conductors show below the wire connectors. Secure each connector with electrical tape.

- Green fan/light control Ground lead to Green or bare copper wire in wall box.
- Black fan/light control lead to Line (Hot) wire in wall box.
- Yellow fan/light control lead to Load (Light) wire in wall box.
- Red fan/light control lead to Load (Fan) wire in wall box.

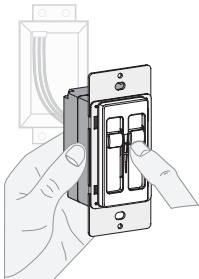
Step 6a Testing your dimmer prior to mounting in wall box:



- Restore power at circuit breaker or fuse.
- Carefully hold device as shown, slide dimmer control lever to highest position. Lights should turn on to the brightest level.

If lights do not turn ON, refer to the TROUBLESHOOTING section.

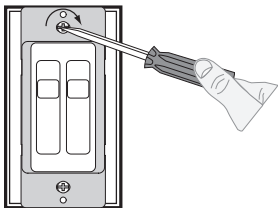
Step 6b Testing your fan control prior to mounting in wall box:



- Restore power at circuit breaker or fuse.
- Carefully hold device as shown, slide fan control lever to highest position. Fan should turn ON to the highest speed.

If fan does not turn ON, refer to the TROUBLESHOOTING section.

Step 7 Device Mounting:
TURN OFF POWER AT CIRCUIT BREAKER OR FUSE.



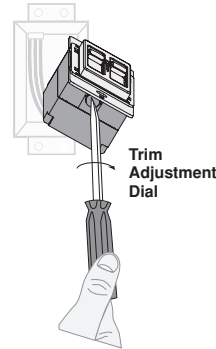
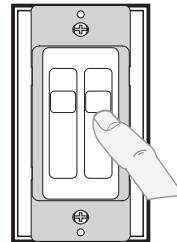
Installation may now be completed by carefully positioning all wires to provide room in wall box for dimmer. Mount dimmer into box with mounting screws supplied. Attach Decora® wallplate.

Step 8 Restore Power: Restore power at circuit breaker or fuse. Installation is complete.

OPERATION

Setting Minimum Light Level (Programming mode)

1. Locate the "Trim Adjustment" dial on the bottom of the dimmer.
2. Slide dimmer control lever to the lowest dimming level/setting.
3. Rotate the dial clockwise to increase the minimum light level. Rotate counter-clockwise to decrease the minimum light level.



The slider on the left side of the face is used to control the LIGHT. The slider on the right side of the face is used to control the FAN.

Fan Operation

- OFF:** Slide control lever down to the bottom position to turn the fan OFF.
- ON (Low):** Slide control lever up one position from the bottom to turn the fan ON at the lowest speed.
- ON (Medium):** Slide control lever up to the second position from the bottom to turn the fan ON to the medium speed.
- ON (High):** Slide control lever up to the top position to turn the fan ON to the highest speed.

Light Operation

- ON:** Slide control lever up to turn lights ON at desired level of light.
- OFF:** Slide control lever all the way down until it clicks to turn lights OFF.
- BRIGHTEN:** Raise slider control lever.
- DIM:** Lower slider control lever.

TROUBLESHOOTING

- **Lights Flickering**
 - Lamp has a bad connection.
 - Wires not secured firmly with wire connectors.
- **CFL and LED flickers at low end of dimming range**
 - Increase the low end of the dimming range. **Operation Section - setting minimum light level.**
- **CFL or LED bulb flickers throughout dimming range**
 - Please refer to recommended dimmable LED bulbs and CFL bulbs at www.leviton.com.
- **Light or Fan does not turn ON**
 - Circuit breaker or fuse has tripped.
 - Lamp is burned out.
 - Lamp Neutral connection is not wired.

For Technical Assistance Call: 1-800-824-3005 (U.S.A. Only)
www.leviton.com

Sureslide is a trademark of Leviton Manufacturing Co., Inc.
registered in the United States and Canada.

FOR CANADA ONLY

For warranty information and/or product returns, residents of Canada should contact Leviton in writing at **Leviton Manufacturing of Canada Ltd to the attention of the Quality Assurance Department, 165 Hymus Blvd, Pointe-Claire (Quebec), Canada H9R 1E9** or by telephone at 1 800 405-5320.

© 2019 Leviton Mfg. Co., Inc.

DI-000-066DF-02A

LIMITED 5 YEAR WARRANTY AND EXCLUSIONS

Leviton warrants to the original consumer purchaser and not for the benefit of anyone else that this product at the time of its sale by Leviton is free of defects in materials and workmanship under normal and proper use for five years from the purchase date. Leviton's only obligation is to correct such defects by repair or replacement, at its option, if within such five year period the product is returned prepaid, with proof of purchase date, and a description of the problem to **Leviton Mfg. Co., Inc. 201 North Service Road, Melville, N.Y. 11747**. This warranty excludes and there is disclaimed liability for labor for removal of this product or reinstallation. This warranty is void if this product is installed improperly or in an improper environment, overloaded, misused, opened, abused, or altered in any manner, or is not used under normal operating conditions or not in accordance with any labels or instructions. **There are no other or implied warranties of any kind, including merchantability and fitness for a particular purpose**, but if any implied warranty is required by the applicable jurisdiction, the duration of any such implied warranty, including merchantability and fitness for a particular purpose, is limited to five years. **Leviton is not liable for incidental, indirect, special, or consequential damages, including without limitation, damage to, or loss of use of, any equipment, lost sales or profits or delay or failure to perform this warranty obligation.** The remedies provided herein are the exclusive remedies under this warranty, whether based on contract, tort or otherwise.

LEVITON®

Artwork Print Specification Sheet Rev A12.eps