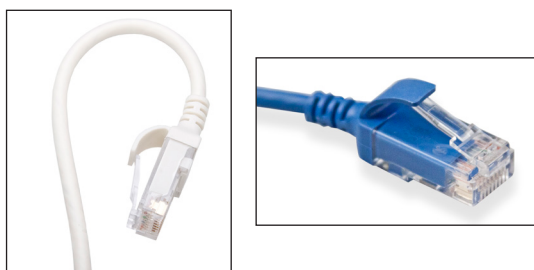


High-Flex HD5 Patch Cords

APPLICATION

Leviton High-Flex HD5 Patch Cords are designed to be used in 1 Gigabit applications for all frequencies from 1 to 100 MHz, where CAT 5e patch cords are commonly utilized. The patch cords offer flexible, high-density patching. The cables support high-speed data applications. They reduce patch cord density in a 24-port patch panel by 32% when compared to typical CAT 5e patch cords.



SPECIFICATION

Patch cords shall provide 1 Gigabit application performance for cross connecting in systems comprised of equipment, cable, and appropriate connectors. The patch cords shall be 28-gauge, unshielded, twisted pair, stranded conductor construction with a standard 8-position modular plug on both ends. Patch cords shall have an outer diameter of 0.15" and shall be available in white and blue.

WARRANTY INFORMATION

For a copy of Leviton product warranties, visit www.leviton.com/warranty.

FEATURES

- Available in white and blue
- Available in 6", 1', 2', 3', and 4' lengths
- Power over Ethernet (PoE and PoE+) compatible
- Accommodate use in high-density switches, routers, and other electronics
- Bend radius is a narrow 0.60", versus 0.88" for typical CAT 5e patch cords

DESIGN CONSIDERATIONS

- Designed to provide connectivity solution for 1 Gigabit applications
- Channel Length:
 - Supports 96-meter channels that include 90 meter permanent links
 - Supports 93-meter channels with 10 meters of patch cords included in the channel

STANDARDS COMPLIANCE

- Meets all applicable standards and listings
- ANSI/TIA-1096-A (formerly FCC Part 68)
 - RoHS compliant

PHYSICAL SPECIFICATIONS

- Dimensions: 6", 1', 2', 3', and 4' lengths
- Materials: 28-gauge, stranded UTP, standard modular non-keyed, 8-position, 8-conductor plug, 94V-0 rated
- Outer Diameter: 0.15"
- Bend Radius: 0.60"

COUNTRY OF ORIGIN

China

5HHOM-XX*

PART NUMBERS

Description

Part No.

High-Flex HD5 Patch Cords

5HHOM-XX*

XX = Length: 6" (6I), 1' (01), 2' (02), 3' (03), 4' (04)

* = colors: White (W), Blue (L)

