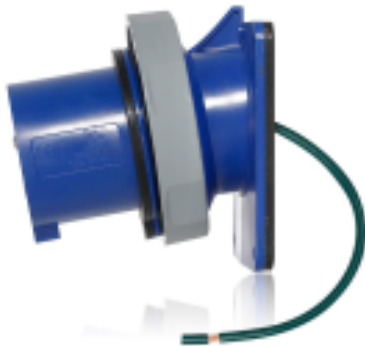


# 330B6WLEV



UPC Code : 078477921685

Country Of Origin : Mexico

LEV Series IEC Pin & Sleeve Inlet

30 Amp, 250 Volt, 2P, 3W, LEV Series North American-Rated IEC 60309-1 & 60309-2 Pin & Sleeve Inlet, Industrial Grade, IP66/IP67/IP68/IP69K, Watertight - Blue

LEV Series IEC Pin & Sleeve Devices are designed to simplify your installation, endure the harshest environments and improve safety and productivity:

<ul>

<li>Nickel-plated pins and sleeves are self-cleaning and corrosion-resistant

<li>Superior watertight ratings including IP69K for washdown/outdoor applications and industry exclusive IP68 for long-term submersion

<li>NSF certified sanitary design trusted for use in food & beverage facilities

<ul>

## Technical Information

### Electrical Specifications

**Amperage** : 30 A

**Current Interrupting** : Certified for current interrupting at full-rated current and voltage

**Dielectric Voltage** : 2000V for 1 min.

**Endurance** : 2000 cycles total - 1000 cycles at Rated Current Voltage, 1000 cycles at no load

**Max. Voltage** : 600V

**Overload UL20 Test** : 150% of rated current and 100% of rated voltage for 50 cycles

**Pole** : 2

**SCCR** : 120kA

**Temperature Rise** : Max 30°C rise at full rated current (after overload)

**Voltage** : 250 VAC

**Wire** : 3

### Environmental Specifications

**Corrosion Resistance** : Salt fog tested

**Flammability** : Rated V-0 (Contact Carrier), HB or better (Housing) per UL94

**IP Rating** : IP66, IP67, IP68, IP69K

**NEMA Enclosure Type** : 3R, 4X, 6P and 12

**NSF** : 14159-1, Hygenic Requirement for the Design of Meat & Poultry Processing Equipment

**UV Resistance** : UV stabilized F1 rated housings

### Material Specifications

**Assembly Screws** : 303 Stainless Steel

**Contact Carrier** : Glass filled Nylon

**Grommet/Gasket** : Chloroprene

**Housing** : PBT

**Terminal Screws** : 303 Stainless Steel

### Mechanical Specifications

**Conductor Range** : #10 AWG to #8 AWG

**Crush Test** : 250 lbs for 1 min after -25°C for 6 hrs

**Hardware Head Type** : Hex style socket screws for terminals, combination screws for all others

**Impact** : Drop from 30" 8 times after conditioning to -25°C, for 6 hours Drop from 72" after conditioning to -35°C, for 6 hours

### Product Features

**Clock Position** : 6 o'clock

**Color** : Blue

**Configuration** : North American

**Device Type** : Inlet

**Product Markings** : Brand, UL, CE and environmental ratings molded in. Item number, ampacity, voltage, phases, HP, NSF on label

**Series** : LEV Series

### Standards and Certifications

**CE** : CE certification

**CSA** : CSA C22.2 No 182.1-13 (Harmonized with UL 1682)

**IEC Rating** : 60309-1, 60309-2

**NOM** : NOM -ANCE standards

**RoHS** : RoHS compliant components

**UL** : UL 1686 C2, UL 1682

### Warranty

**Warranty** : 5-Year Limited

## SPECIFICATION SUBMITTAL

JOB NAME: <input type="text"/>	CATALOG NUMBERS: <input type="text"/>	
JOB NUMBER: <input type="text"/>	<input type="text"/>	<input type="text"/>

**Leviton Manufacturing Co., Inc.**

201 North Service Road, Melville, NY 11747

Telephone: +1-800-323-8920 · FAX: +1-800-832-9538 · Tech Line (8:30AM-7:30PM E.S.T. Monday-Friday):

+1-800-824-3005

**Leviton Manufacturing of Canada, Ltd.**

165 Hymus Boulevard, Pointe Claire, Quebec H9R 1E9 · Telephone: +1-800-469-7890 ·

FAX: +1-800-824-3005 · [www.leviton.com/canada](http://www.leviton.com/canada)

**Leviton S. de R.L. de C.V.**

Lago Tana 43, Mexico DF, Mexico CP 11290 · Tel.: (+52)55-5082-1040 · FAX: (+52)5386-

1797 · [www.leviton.com.mx](http://www.leviton.com.mx)

**Visit our Website at: [www.leviton.com](http://www.leviton.com)**

© 2018 Leviton Manufacturing Co., Inc. All Rights Reserved. Subject to change without notice.

**Leviton has a global presence.**

If you would like to know where your local Leviton office is located please go to:

[www.leviton.com/international/contacts/](http://www.leviton.com/international/contacts/)

