

SYLVANIA LEDVANCE

Luminaires Installation Guide

WALL PACK CUTOFF



The Wall Pack luminaires are environmentally preferable LED alternatives to traditional HID luminaires, offering up to 76% in energy savings. Ideal in place of traditional luminaires, or as new installations, the Wall Pack series is offered in three wattages/lumen packages for illuminating building exteriors, outdoor corridors, walkways, and stairwells.

⚠ WARNING

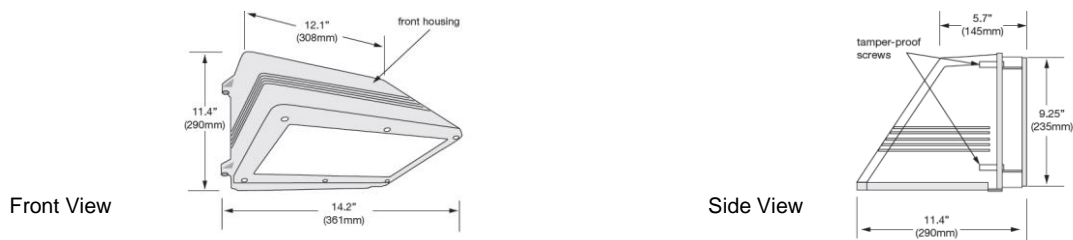
PLEASE READ ALL INSTRUCTIONS BEFORE ATTEMPTING INSTALLATION

- TO PREVENT PERSONAL INJURY OR PRODUCT DAMAGE ONLY LICENSED ELECTRICIANS SHOULD PROVIDE ALL INSTALLATION SERVICES.
- TO AVOID ELECTRIC SHOCK OR COMPONENT DAMAGE DISCONNECT POWER BEFORE ATTEMPTING INSTALLATION OR SERVICING
- THIS PRODUCT MUST BE INSTALLED IN ACCORDANCE WITH THE NATIONAL ELECTRIC CODE (NEC) AND ALL APPLICABLE FEDERAL, STATE AND LOCAL ELECTRIC CODES AND SAFETY STANDARDS.
- USE CAUTION WHEN HANDLING THIS PRODUCT DURING OR AFTER OPERATION AS IT MAY BECOME HOT AND CAUSE BURNS. DISCONNECT PRODUCT AND ALLOW COOLING PRIOR TO SERVICING.
- ANY ALTERATION OR MODIFICATION OF THIS PRODUCT IS EXPRESSLY FORBIDDEN AS IT MAY CAUSE SERIOUS PERSONAL INJURY, DEATH, PROPERTY DAMAGE AND/OR PRODUCT MALFUNCTION.
- TO PREVENT PRODUCT MALFUNCTION AND / OR ELECTRICAL SHOCK THIS PRODUCT MUST BE PROPERLY GROUNDED.
- THIS LUMINAIRE IS TO BE WALL MOUNTED ONLY
- THIS LUMINAIRE IS DESIGNED TO OPERATE IN AMBIENT TEMPERATURES RANGING FROM -40°F TO +104°F (-40°C TO +40°C)

SAFETY PRECAUTION:

IMPORTANT: READ CAREFULLY BEFORE INSTALLING THE FIXTURE. RETAIN FOR FUTURE REFERENCE.

GENERAL: Upon receipt of the fixture, thoroughly inspect for any freight damage which should be brought to the attention of the delivery carrier.



INSTALLATION:

1. Open the fixture by loosening the tamper-proof screws on the side (See Fig. 1) and open the front housing. (See Fig. 2). Tamper-proof drill bit provided in hardware bag. (Remove the driver from the base die cast to clear the mounting space if needed).
2. Prepare the back plate for mounting by drilling or knocking out the appropriate holes. (See Fig. 3)
3. Line up the back plate in the desired location and mount securely.
4. If using electrical conduit, remove the screw cap from the desired 1/2" NPS tapped hole and replace with conduit. (See Fig.3 D) Route the branch circuit wires inside the fixture. If using a junction box, bring the branch circuit wires through the rear hole into the fixture.
5. Connect the incoming electrical wires to the set of power wires black to black (hot), white to white (neutral) and green to green (ground). (See Wiring Diagram)
6. Reattach the driver to the back plate if removed in step 1.
7. **Replacing Lens (Frame with Glass Lens Sold Separately)**
 - a. Remove all screws around the lens (on front housing). (See Fig. 2)
 - b. Remove frame and lens and replace with new frame and lens.
 - c. Secure frame by tightening all screws on front housing.
8. Close the front housing using the provided tamper-proof screws.
9. Installation is now complete. Turn on the power at circuit breaker or fuse box then turn the light switch to power the fixture.

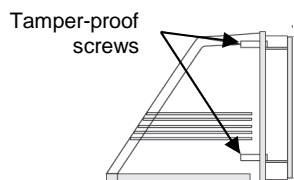


Figure 1

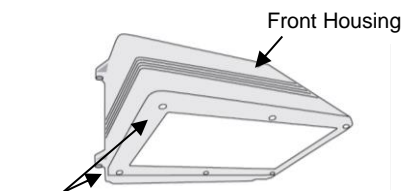
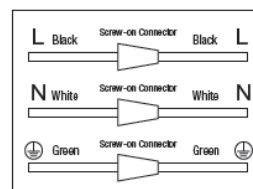


Figure 2



Wiring Diagram

MOUNTING:

The back plate has a cast-in drill and knock-out template to match any standard recessed junction box, three 5/16" knockouts for mounting holes (A) and three 1/2" NPS tapped holes (D) for surface conduit or photocontrol unit.

IMPORTANT:

To weather-proof your outdoor installation, use silicone sealant to seal all holes in the fixture housing (mounting, conduit, plugs, photocontrols, etc.) and all edges between the fixture housing and the mounting surface.

NOTE: Driver is designed for 120-277 VAC without any change in wiring.

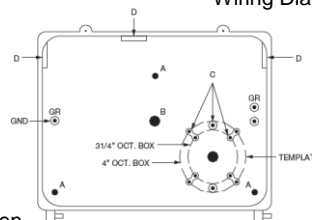


Figure 3

- A – 5/16" dia. Knockouts
- B – 9/16" dia. Knockouts
- C – Knockouts for #10 screw
- D – 1/2" NPS tapped holes

INTEGRAL PHOTOCONTROL (Optional)

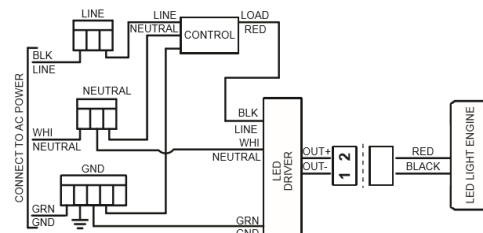
This fixture may be shipped with an optional integral multi-volt photocontrol. This does not change the installation above - the photocontrol is pre-wired.

ADDING A SENSOR (Provided by others):

ADDING AN ON/OFF SENSOR (provided by others)

1. After Step 8 on page 2, use a flat head screw driver to remove desired knockout.
2. See Wiring Diagram
3. Before closing the luminaire remove desired knockout from housing if necessary.
4. Resume with step 9 on page 2 assuring the through wire conduit connector fits properly.

Wiring Diagram



CLEANING AND MAINTENANCE

- To maintain the fixture efficacy occasional cleaning of the outer lens surface may be needed.
- Use a mild soap or detergent, which is essentially neutral pH (pH approximately 6 to 8), nonabrasive, and which contains no chlorinated or aromatic hydrocarbons.
- Wash thoroughly, using a soft cloth.



TROUBLE SHOOTING CHECKLIST : If the light does not work.

- Check your power source.
- Check electrical connections.