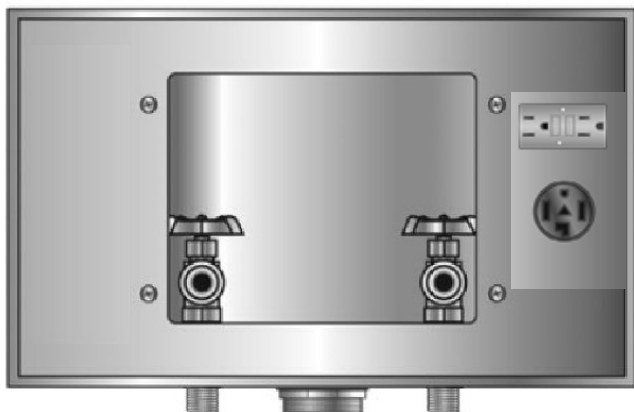




CENTER DRAIN GALVANIZED WMOB, Domestic Valves With GFCI & Dryer Receptacles on Right



Specification:

Furnish and install center drain galvanized washing machine outlet box with GFCI and dryer receptacles. Unit shall be Guy Gray product code as manufactured by IPS Corporation.

Box Material:

20 gauge Box and 20 gauge faceplate
G90 Hot Dipped Galvanized Steel (unpainted)

Valve & Drain Options:

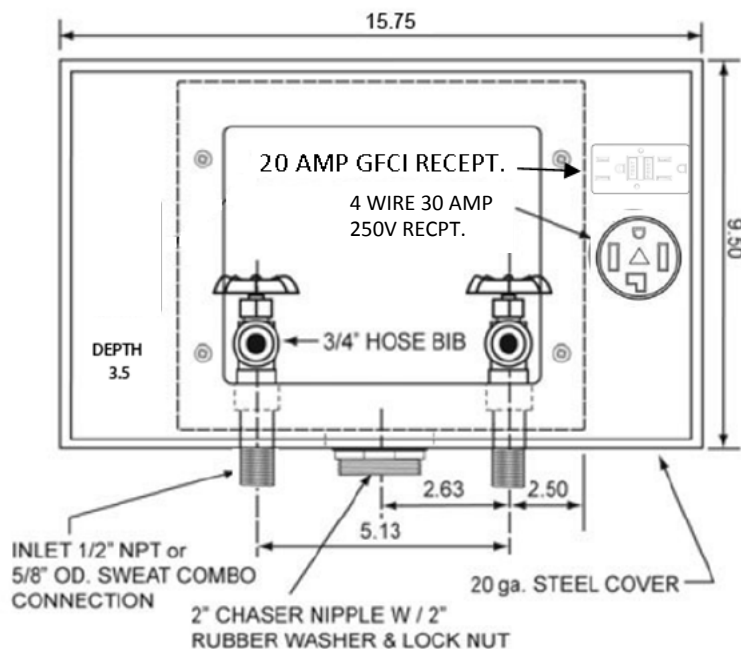
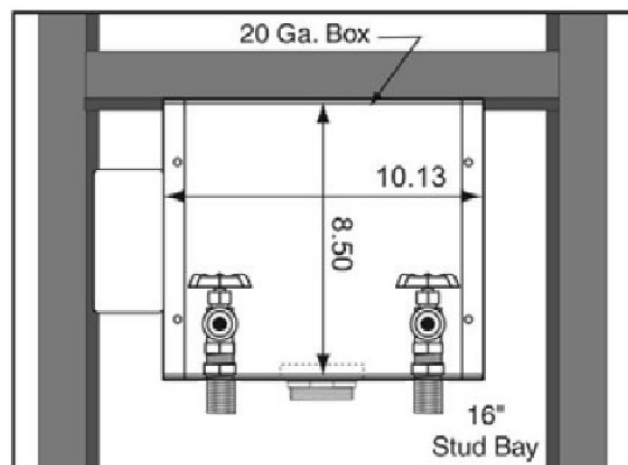
Domestic 1/2" MIP/Sweat Connection Valve.
2" Threaded Drain or 1 1/2" Male Threaded Drain. Valves comply with ASME A112.18.1

Ground Fault Circuit Interrupter (GFCI) Receptacles:

UL/CSA Listed

Rated: 20A outlet, 20A Feed-Through, 125v

4 Wire Dryer: 30A/125/250V



Product Code #	Product Description	Model Number	Units/ Case
82635	1/2" MIP/Sweat Conx. Valves, 2" Threaded Drain Fitting, w/GFCI and 4 Wire Dryer Recpt.	NWBED2004GF	6

