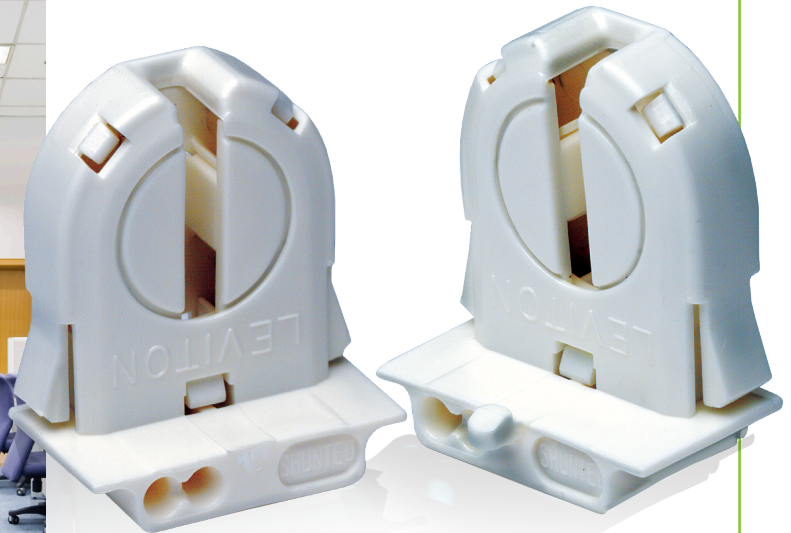


Dedicated T-8 Bi-Pin Fluorescent Lampholder

Features Snap-In/Slide-On Design and Lamp-Lock
Accepts Energy-Efficient T-8 Fluorescent Lamps Only



Innovative features make it a snap to incorporate Leviton's versatile new lampholder into your fixture designs. Styled for convenience, the lampholder provides a user-friendly combination of benefits. These include front push-in wiring ports for easier access, snap-in or slide-on mounting options, and a 4-position, positive-stop lamp-lock that makes it simple for end-users to relamp in service. The extra-low profile thermoplastic lampholder fits the thin 22 to 25 gauge panels preferred by OEM's to create smaller, more cost-effective fixtures. It also has an optional panel locator pin. While other lampholders accept both T-8 and T-12 lamps, Cat. Nos. 13652 (non-shunted) and 23652 (shunted) are dedicated only for energy efficient T-8's. The lampholder is an exciting new addition to the Leviton line of high-quality OEM products.

Applications:

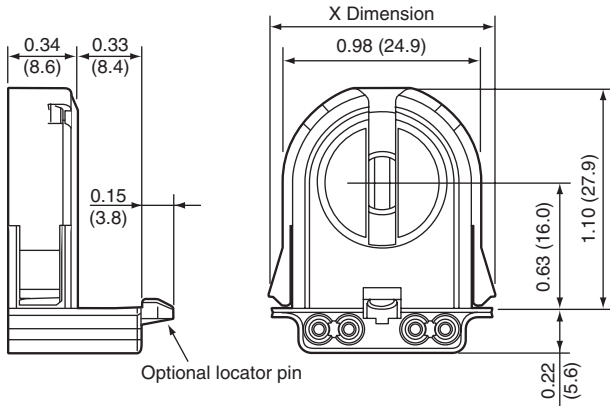
- Indoor lighting for retail, commercial and industrial facilities
- Educational facilities

Features and Benefits:

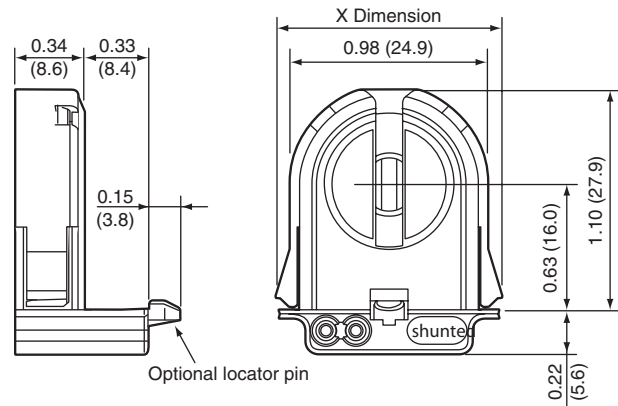
- Versatile snap-in or slide-on mounting reduces fixture assembly time
- Four-position lamp-lock socket rotates 90°, forward and back, for quick relamping
- Anti-vibration lamp-lock design ensures secure lamp fit
- Slim, low-profile silhouette fits 22 to 25 gauge panels
- Front push-in wiring provides easier access to wire ports
- Lampholder fits energy-efficient T-8 lamps only, eliminating the possibility of use with less efficient T-12 lamps
- Cat. No. 23652 provides internal shunt connection for use with electronic ballasts. Back of lampholder is stamped "S" for shunted
- Optional panel locator post
- Chemical-resistant white thermoplastic body
- Push-in wiring terminals accept No. 18 AWG solid or twisted-and-overtinned leads, stripped 3/8 inch

Dimensions

For use with 20 to 25 gauge panels

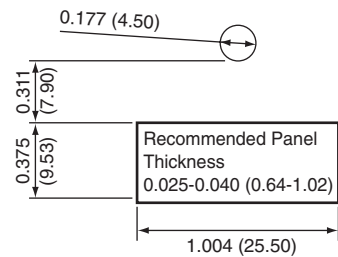


Cat. No. 13652

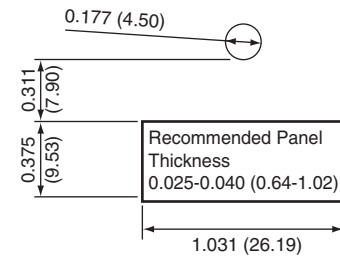


Cat. No. 23652

Note: Dimensions in parentheses are in millimeters. All other dimensions are in inches.




For all -WP, -NP models



For all -WWP, -WNP wide-wing models

Specifications

Rating	Agency Standards
660W-600V	UL Listed  (File #E-5833), CSA Certified (File ##LR-1863), NOM Certified (File #057), VDE Certified to IEC CE Marking, Instant-Start Rated, 130 RTI.

Ordering Information

Cat. No.	X Dimension	Description
13652-WP	1.12 (28.4)	Medium Bi-Pin Snap-In or Slide-On Fluorescent Lampholder, T-8 dedicated, with lamp lock.
13652-NP	1.12 (28.4)	Same as above less locator post.
23652-WP	1.12 (28.4)	Same as 13652-WP, except with internal shunt connection for use with electronic ballasts. Back of lampholder is stamped "S" to identify shunt and help prevent improper applications.
23652-NP	1.12 (28.4)	Same as above less locator post.
13652-WWP	1.15 (29.2)	Medium Bi-Pin Snap-In or Slide-On Fluorescent Lampholder, T-8 dedicated, with lamp lock. Wide-wing design.
13652-WNP	1.15 (29.2)	Same as above less locator post.
23652-WWP	1.15 (29.2)	Same as 13652-WWP, except with internal shunt connection for use with electronic ballasts. Back of lampholder is stamped "S" to identify shunt and help prevent improper applications.
23652-WNP	1.15 (29.2)	Same as above less locator post.

Leviton Manufacturing Co., Inc.

201 N Service Rd, Melville, NY 11747
 Telephone: 1-800-323-8920 • FAX: 1-800-832-9538
 Tech Line (8:30AM-7:00PM E.S.T. Monday-Friday): 1-800-824-3005

Leviton Manufacturing of Canada, Ltd.

165 Hymus Blvd, Pointe-Claire, QC H9R 1E9
 Telephone: 1-800-469-7890 • FAX: 1-800-563-1853

Leviton S. de R.L. de C.V.

Lago Tana 43, Col. Huichapan, Miguel Hidalgo, CP 11290 México DF
 Tel. (+52) 55-5082-1040 • Fax: (+52) 55-5386-1797 • www.leviton.com.mx

Visit our Website at: www.leviton.com

© 2010 Leviton Manufacturing Co., Inc. All rights reserved. Subject to change without notice.



B-908A