

# AP100

## Brand Features

Leviton's pin and sleeve devices are easy to use. Matching amperage and voltage requirements is literally as easy as matching colors and telling time. The amperage rating is related to the size of the device; devices of the same amperage are the same size. The voltage rating is related to the location of the ground sleeve on the female device and the number of conductors. This location is based on a clock face with the key-way at the 6 o'clock position. The ground sleeve is positioned at a specific hour location, depending on the device's voltage rating.

## Item Description

Replacement Valox Adapter Plate for Pin & Sleeve Inlets And Receptacles, 100 Amp, IP67, Watertight, Fits Leviton and Hubbell Back Boxes - GRAY

Color:  Gray

UPC Code: 07847708519

## Technical Information

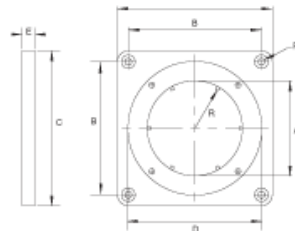
### Product Features

**Accessory Type:** Adapter Plate

**Amperage:** 100 A

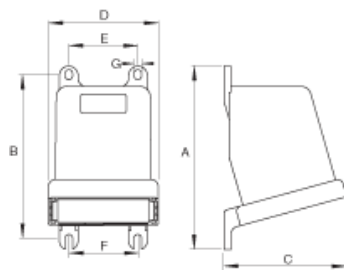
**Color:** Gray

**Material:** Valox 357



Adapter Plates

| UNIT           | A    | B    | C    | D    | E   | F   | R    |
|----------------|------|------|------|------|-----|-----|------|
| <b>60 Amp</b>  |      |      |      |      |     |     |      |
| Inch           | 2.78 | 3.96 | 4.50 | 3.88 | .40 | .20 | 1.28 |
| mm             | 70   | 98   | 114  | 98.5 | 10  | 5   | 32.5 |
| <b>100 Amp</b> |      |      |      |      |     |     |      |
| Inch           | 3.23 | 4.88 | 5.50 | 4.60 | .40 | .22 | 1.50 |
| mm             | 82   | 124  | 140  | 117  | 10  | 5.5 | 38   |



Back Boxes

| UNIT                                  | A     | B     | C     | D     | E     | F    | G    |
|---------------------------------------|-------|-------|-------|-------|-------|------|------|
| <b>20 Amp &amp; 30 Amp - 1/4" Hub</b> |       |       |       |       |       |      |      |
| Inch                                  | 6.69  | 5.91  | 4.53  | 3.90  | 2.35  | 2.35 | 0.25 |
| mm                                    | 170.0 | 150.0 | 115.0 | 99.0  | 60.0  | 60.0 | 6.5  |
| <b>60 Amp - 1 1/4" Hub</b>            |       |       |       |       |       |      |      |
| Inch                                  | 7.68  | 6.92  | 5.20  | 4.65  | 2.99  | 2.99 | 0.31 |
| mm                                    | 195.0 | 176.0 | 132.0 | 118.0 | 76.0  | 76.0 | 8.0  |
| <b>100 Amp - 1 1/2" Hub</b>           |       |       |       |       |       |      |      |
| Inch                                  | 8.23  | 7.39  | 6.30  | 5.71  | 3.99  | 3.33 | 0.33 |
| mm                                    | 209.0 | 188.0 | 160.0 | 145.0 | 101.0 | 84.5 | 8.5  |

## SPECIFICATION SUBMITTAL

|                      |                      |                      |
|----------------------|----------------------|----------------------|
| JOB NAME:            | CATALOG NUMBERS:     |                      |
| <input type="text"/> | <input type="text"/> | <input type="text"/> |
| JOB NUMBER:          | <input type="text"/> | <input type="text"/> |

**Leviton Manufacturing Co., Inc.**

201 North Service Road, Melville, NY 11747

Téléfono: +1-800-323-8920 · FAX: +1-800-832-9538 · Tech Line (8:30AM-7:30PM E.S.T. Monday-Friday): +1-800-824-3005

**Leviton Manufacturing of Canada, Ltd.**

165 Hymus Boulevard, Pointe Claire, Quebec H9R 1E9 · Telephone: +1-800-469-7890 ·

FAX: +1-800-824-3005 · [www.leviton.com/canada](http://www.leviton.com/canada)

**Leviton S. de R.L. de C.V.**

Lago Tana 43, Mexico DF, Mexico CP 11290 · Tel.: (+52)55-5082-1040 · FAX: (+52)5386-1797 · [www.leviton.com.mx](http://www.leviton.com.mx)

**Visit our Website at: [www.leviton.com](http://www.leviton.com)**

© 2018 Leviton Manufacturing Co., Inc. Todos los derechos reservados. Subject to change without notice.

**Leviton has a global presence.**

If you would like to know where your local Leviton office is located please go to:

[www.leviton.com/international/contacts/](http://www.leviton.com/international/contacts/)

