

e2XHD Patching System

Simplify installation and add flexibility to copper and fiber cabling applications



e2XHD Patching System

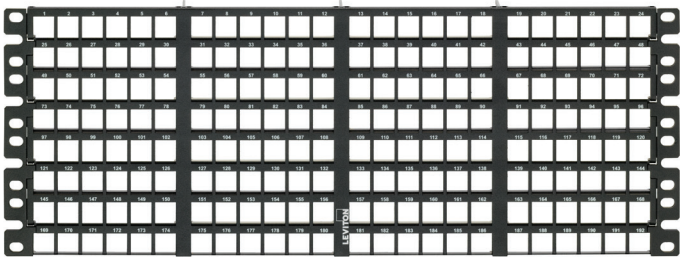
The e2XHD Patching System provides a high-density solution for enterprise and data center applications, where fast deployment and simple maintenance are priorities. e2XHD fiber and copper cassettes quickly snap in and pull out of the high-density 1RU and 4RU panels, making installation, moves, adds, and changes easier than ever.

Features

- Flat and angled panels allow mix-and-match of Leviton fiber and copper snap-in cassettes
- e2XHD cassettes work exclusively with e2XHD panels
- Fiber cassettes are available in 12- or 24-fiber options and OM3, OM4, or single-mode fiber types
- Copper cassettes are available either on pre-terminated trunks or kitted with field-terminated eXtreme CAT 6A or CAT 6 connectors
- Copper connectors easily snap into cassette after termination
- System accessories include a rear cable manager that snaps directly into the panel, blank cassette inserts for unused cassette openings, and a top cover for the angled panel, minimizing dust or debris



1RU High-Density Flat Panel



4RU High-Density Flat Panel



1RU High-Density Angled Panel



4RU High-Density Angled Panel

e2XHD 1RU and 4RU High Density Patch Panels

- Holds up to 48 fiber channels or 48 copper ports per rack unit
- Accepts up to 8 copper cassettes per RU
- Accepts up to 8 single height or 4 double height fiber cassettes per RU
- Mounts on standard 19" relay racks or cabinets

e2XHD 1RU & 4RU PANEL CAPACITY WITH 24-FIBER MTP CABLING

APPLICATION	MAX # OF FIBERS		MAX # OF CHANNELS	
	1RU	4RU	1RU	4RU
10GbE	96	384	48	192
40GbE	192	768	24	96
100GbE	768	3072	32	128

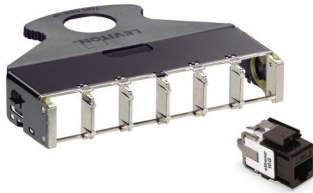
Simple Installation and Removal



- Alignment tabs on rear of cassette makes insertion into patch panel easy
- To remove cassette from panel, simply pull out handle using release latch; no tools required
- Rear cable manager supports both copper and fiber cables, and includes cable management rings and tie downs

e2XHD Copper Cassette Kit

- Supplied as a kit with cassette and six CAT 6A or CAT 6 QuickPort® Connectors
- AXT barrier reduces alien crosstalk between ports
- Cassettes are also available pre-terminated on Leviton trunk cables



Copper Cassette, kitted with eXtreme® CAT 6 or CAT 6A QuickPort Connectors

e2XHD Fiber Cassettes

- Available in 12- or 24-fiber, OM3, OM4, single-mode
- Allows for simple migration path to 40GbE or 100GbE networks with MTP® cassettes
- All cassettes use either 24-fiber or 12-fiber low-loss MTP connectors
- TIA Method B polarity installations require one core cassette for each edge cassette; White fiber cassettes designate edge applications, and black designate core applications



MTP-LC 24-Fiber Core Cassette



MTP-LC 12-Fiber Core Cassette



12-Fiber QuickPort® LC Cassette



MTP-MTP Pass-Through Core Cassette



2x12-Fiber to 3x8-Fiber MTP-MTP Edge Cassette



MTP-LC 24-Fiber Edge Cassette, Rear



1x24-Fiber to 3x8-Fiber MTP-MTP Core Cassette

MTP adapter on rear of fiber cassette swivels to three positions for easier cable routing.



Accessories



Rear Cable Managers

- Supports both copper and fiber cables
- Cable management rings included to help manage and route incoming fiber cables
- Built-in Velcro® Brand tie downs secure fiber or copper cables



Angled Panel Top and Bottom Cover

- Uses no additional rack space
- Minimizes dust and debris behind panels
- Protects cassettes mounted in panel
- Can be retrofitted after panel is installed



Angled Panel Blank Insert

- Blocks any unused cassette openings
- Easily snaps into rear of panel



Universal Clamp Kits

- Mount to rear cable manager or rack
- Single grommet or multiple cable grommet available
- Multiple angle positions



QuickPort® Connector Removal Tool

- Removes QuickPort modular copper connectors and fiber adapters from cassettes

e2XHD PATCHING SYSTEM

DESCRIPTION	PART NO.
e2XHD 1RU High-Density Angled Panel	E2X1A-D48
e2XHD 4RU High-Density Angled Panel	E2X4A-192
e2XHD 1RU High-Density Flat Panel	E2X1F-D48
e2XHD 4RU High-Density Flat Panel	E2X4F-192
e2XHD 24-fiber MTP®-LC Fiber Cassette, Core	(see options below)
e2XHD 12-fiber MTP-LC Fiber Cassette, Core	(see options below)
e2XHD MTP-MTP Fiber Cassette, Core	(see options below)
e2XHD 24-fiber MTP-LC Fiber Cassette, Edge	(see options below)
e2XHD 24-fiber MTP-MTP Fiber Cassette, Edge	(see options below)
e2XHD 12-fiber MTP-MTP Fiber Cassette, Edge	(see options below)
e2XHD 12-fiber QuickPort® LC Cassette, OM3 - aqua	E2XLC-AQU
e2XHD 12-fiber QuickPort LC Cassette, OS2 - blue	E2XLC-BLU
e2XHD MTP-MTP Pass-Through Cassette, four key-up/key-down adapters	E2XHD-4MP
e2XHD MTP-MTP Pass-Through Cassette, four key-up/key-up adapters	E2XHD-4MB
e2XHD 6-port CAT 6A Cassette Kit*	E2X6A-xxx
e2XHD 6-port CAT 6 Cassette Kit*	E2X61-xxx
e2XHD Copper Cassette, terminated to trunk cable	Configure online at leviton.com/e2XHD
e2XHD Cassette Blank	E2XHD-BLK
e2XHD Rear Cable Manager for Angled Panel, with cable management rings	E2XHD-CMB
e2XHD Rear Cable Manager for Flat Panel, with cable management rings	E2X1F-CMB
e2XHD Angled Panel Cover	E2XHD-COV
QuickPort Connector Removal Tool	E2XHD-JRT
Universal Opt-X® Clamp Kit, Single Cable Grommet (mounts to Rear Cable Manager)	5RCMP-KIT
Universal Opt-X Clamp Kit, Multiple Cable Grommet (mounts to Rear Cable Manager)	5RCMP-KT2
Universal Clamp Kit, Single and Multiple Cable Grommet (for rack mounting)	5RCMR-KIT

* = CAT 6A Cassettes include six 6A10G QuickPort® Connectors. CAT 6 Cassettes include six 61110 QuickPort Connectors
xxx = connector colors: Black (BLK), Blue (BLU), Green (GRN), Yellow (YEL), Red (RED)

Make-to-Order! e2XHD MTP Fiber Cassette Options

FIBER TYPE	FIBER COUNT	CONNECTOR TYPE	MTP FIBER COUNT	COLOR	FOOTPRINT	POLARITY
<ul style="list-style-type: none"> • OM3 • OM4 • OS2 	<ul style="list-style-type: none"> • 12 • 24 	<ul style="list-style-type: none"> • LC • 8F MTP (female) 	<ul style="list-style-type: none"> • 12F MTP • 24F MTP 	<ul style="list-style-type: none"> • MM aqua adapter • SM blue adapter • Black (MTP only) 	<ul style="list-style-type: none"> • 12 Fiber (single cassette height) • 24 Fiber (double cassette height) 	<ul style="list-style-type: none"> • Method A • Method B, Core, black • Method B, Edge, white • Method C



For assistance customizing your cassettes, please visit leviton.com/configurator or call Tech Support at 800.824.3005.

Packaging

All cassettes are shipped in durable plastic clamshell packaging.



Copper Cassette and Six CAT 6 or CAT 6A QuickPort® Connectors



Copper Cassette Terminated to Leviton Trunk Cables



MTP-LC 24-fiber Cassette