



# HAMMOND MANUFACTURING®

Quality Products. Service Excellence.

## NEW PRODUCTS GUIDE

### Electrical Enclosures & Accessories

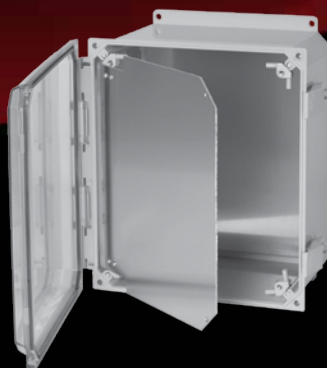
[hammondmfg.com](http://hammondmfg.com)



*Waterfall Series*



*HWHK Series*



*PCJ Series*



*HJH Series*

*Plus ... 1447 Disconnect, Stainless Steel Wireway, Commercial Boxes,  
Accessories and more*

**NEW PRODUCTS GUIDE - E6A1**

# New Product Guide from Hammond

## About This Guide

This brochure presents the significant list of new products Hammond has introduced since we issued our full line “E6 Electrical Product Guide”.



You will see new industrial and commercial enclosure series and accessories that meet the evolving needs of today's electrical applications.

We've also highlighted existing series where we have expanded our offering via new sizes, colors or materials.

## Get The Technical Details

On the following pages, we outline the key features of our new product offerings. You will also see the part numbers and overall sizes.

For full technical specifications and CAD drawings we have provided a quick link to the details on our website.

### Series Web Address

In each new product section, you will see a direct web address to get you to the full information, e.g.

[hammfg.com/product/hjh](http://hammfg.com/product/hjh)

## Keeping Up To Date

As we continue to develop new products, your best resource for the most current information is our website – [hammondmfg.com](http://hammondmfg.com).

Next time you visit, be sure to click on our “New Electrical Products” section to see the next new Hammond enclosure solution.

If you would like to be included in our new product launch emails, be sure to send us your contact information to [sales@hammfg.com](mailto:sales@hammfg.com) and request “New Product News” in your note.

### QR Code

If you have a smartphone with a QR reader, you can quickly scan the series QR image which will take you directly to the webpage, e.g.



## [hammondmfg.com](http://hammondmfg.com)...Your comprehensive source for enclosures



### Your “Go To” Web Resource

When you need to find the right enclosure, [hammondmfg.com](http://hammondmfg.com) by Hammond Manufacturing is the absolute best place to start.

You can find thousands of enclosure solutions to suit your given application – mild steel, stainless steel, aluminum, non-metallic boxes in dozens of unique configurations.

Bookmark this great, time-saving resource today – [hammondmfg.com](http://hammondmfg.com).

### Quick Search Saves Time!

The [hammondmfg.com](http://hammondmfg.com) Quick Search feature is designed to get you to what you need ASAP.

Enter a dimension like 6x6x4 and you'll immediately get a comprehensive listing of enclosure options in that size or next closest alternative. Also works for metric queries – enter 150x150x100mm.

Quick Search acts as a cross reference too – simply enter a competitor part to see the Hammond equivalent. We're building this database constantly.

### Advanced Search Narrows The List

For more precise queries, Advanced Part Search allows you to drill down your requirements to get exactly what you're after.

Your parameters include dimensions (imperial or metric), material type, critical features and approval rating.

### Numerous Resources Offered

Once you get to the product you want, the specification support material available can be extremely helpful.

You will find numerous part drawing options – PDF, DXF and STEP files that can be immediately opened and downloaded – no cumbersome passwords sign up required.

Detailed product specification information (key features, construction, finish, accessory options) are also at your fingertips. A built-in PDF generator allows you to save or send these specifications hassle-free to your customer.

**VISIT [hammondmfg.com](http://hammondmfg.com) today – and see if you agree it's “the world's greatest enclosure website”!**

## New Product Series

### Industrial Enclosures

Eclipse Junior Series - Type 4 Mild Steel Junction Box	2
HJ Series - Type 4,12 Mild Steel Junction Box	3
HJH Series - Type 4,12 Mild Steel Junction Box	4
HWHK Series - Type 4 Mild Steel Wallmount Enclosure	5

### Corrosion Resistant Enclosures

Eclipse Junior Series - Type 4X Aluminum Junction Box	6
HWN4SSHK Series - Type 4X Stainless Steel Wallmount Enclosure	7
Waterfall Series - Type 4X Stainless Steel Wallmount Enclosure	8
STMF Series - Waterfall Series Stand-offs	9
WDFSKSS Waterfall Series Floor Stand Kits	9
EQTFG Series - Waterfall Series Washdown Quarter Turn	10
PJW Series - Type 4X Polyester Wallmount Enclosure	11
PJHDSeries - Type 4X Polyester Junction Box	11
PCJ Series - Type 4X Polycarbonate Screw Cover	12
PCJ Series - Type 4X Polycarbonate Hinged Screw Cover	12
PCJ Series - Type 4X Polycarbonate Metal Latch Cover	13
PCJ Series - Type 4X Polycarbonate Non-Metallic Latch Cover	13
PCJP Series - PCJ Series Inner Panels	14
PCJSP Series - PCJ Series Swing Panel	14

### Disconnect Enclosures

1447SHK Series - Type 4 Mild Steel Wallmount Disconnect Enclosure	15
---	----

### Modular Freestanding Enclosures

HMEP Series - Inner Panels and Supports	16
HMEPL Series - Solid Plinth	16

### Operator Interface Enclosures

1437SS Series - Type 4X Stainless Steel Pushbutton Enclosures	17
---	----

### Wireway & Trough

CW Series - Type 1 Lay-In Wireway	18
1487SS Series - Type 4X Stainless Steel Pull Through Wireway	18

### Commercial Enclosures

CSG Series - Type 1 Unpainted Galvanized Steel Junction Box	19
CSKOG Series - Type 1 Unpainted Galvanized Steel Junction Box	19
C3RESCNKAL Series - Type 3R Aluminum Junction Box	20
C3RESCNK Series - Type 3R Painted Galvanized Junction Box	20

### Climate Control Products

DTS30X1 Series - 900-1300 BTU Air Conditioner	21
CONDBTL Series - Condensate Overflow Bottle	21
DTSFK Series - Filter Kits	22
PFFG4 Series - Filter Kits	22
1481L3R Series - Type 3R Louver Kits	23

### Accessories

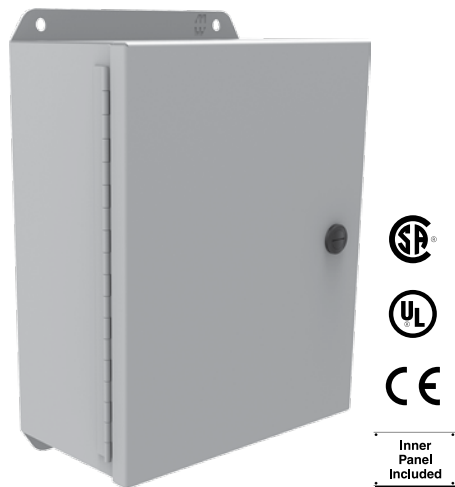
DRDT Series - Ground Stud Kit	24
GRDKIT Series - Ground Wire Kits	24
GRDBAR Series - Copper Busbar	25
HPN4PC Series - Hole Plugs	25
HPN4SS Series - Hole Plugs	26
CSFC Series Flush Covers	26
GPM Series - Gland Plates	27
HTH Series - Top Hat Cable Modules	27

## Product Series Extensions

Eclipse Junior Series - Type 4X Stainless Steel Junction Box	28
1414N4PHSS Series - Type 4X Stainless Steel Junction Box	28
Eclipse Series - Type 4X Stainless Steel Wallmount Enclosure	28
HME Series - Type 12 Modular Freestanding Enclosure	28

## Type 4 Mild Steel Junction Box *Eclipse Junior Series*

### Continuous Hinge Door with Quarter Turn



Industrial Enclosures

- **New Color Added:**
- Now offered in Light Gray (RAL7035) as well as current standard ANSI 61 Gray.
- New sizes added to this well established series - check online for the full offering.
- Note - complete with galvanized inner panel for all sizes except 4x4

Part Number	H	W	D
EJ443LG	4	4	3
EJ643LG	6	4	3
EJ683LG	6	8	3.5
EJ863LG	8	6	3.5
EJ444LG	4	4	4
EJ644LG	6	4	4
EJ664LG	6	6	4
EJ884LG	8	8	4
EJ8104LG	8	10	4
EJ1084LG	10	8	4
EJ1264LG	12	6	4
EJ12124LG	12	12	4
EJ10125LG	10	12	5
EJ12105LG	12	10	5
EJ866LG	8	6	6
EJ1086LG	10	8	6
EJ10106LG	10	10	6
EJ12126LG	12	12	6
EJ12146LG	12	14	6
EJ1486LG	14	8	6
EJ14126LG	14	12	6
EJ14166LG	14	16	6
EJ16106LG	16	10	6
EJ16146LG	16	14	6
EJ12108LG	12	10	8
EJ14128LG	14	12	8
EJ16148LG	16	14	8
EJ161410LG	16	14	10

Scan the code or visit the following link for complete product details.

[hammfg.com/product/ej](http://hammfg.com/product/ej)



## Type 4, 12 Mild Steel Junction Box *HJ Series* Lift-Off Cover with Clamps



Panel  
Sold  
Separately

### Key Features:

- Combined UL/CSA Type 12/4 approvals for multi-purpose applications
- Fully removable, lift off lid secured with stainless steel clamps
- Full width, welded mounting flange
- Inner panel sold separately (painted steel or galvanized options)

Part Number	H	W	D	Opt. Panel
HJ443LP	4	4	3	-
HJ643LP	6	4	3	14R0503
HJ863LP	8	6	3.5	14R0705
HJ444LP	4	4	4	-
HJ644LP	6	4	4	14R0503
HJ664LP	6	6	4	14R0505
HJ1084LP	10	8	4	14R0907
HJ12105LP	12	10	5	14R1109
HJ14126LP	14	12	6	14R1311
HJ16146LP	16	14	6	14R1513
HJ14128LP	14	12	8	14R1311
HJ161410LP	16	14	10	14R1513

Scan the code or visit the following link for complete product details.

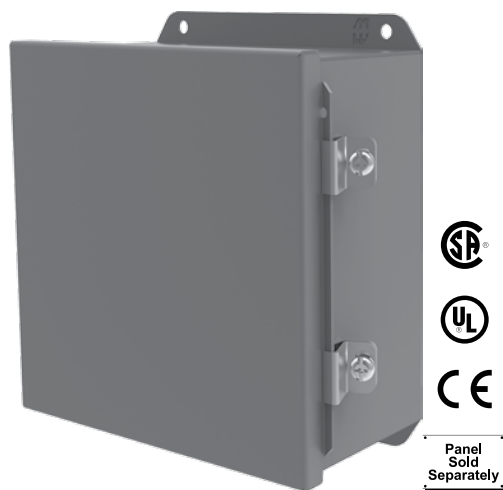
[hammfg.com/product/hj](http://hammfg.com/product/hj)



Industrial Enclosures

## Type 4, 12 Mild Steel Junction Box *HJ H Series*

### Continuous Hinge Door with Clamps



#### Key Features:

- Combined UL/CSA Type 12/4 approvals for multi-purpose applications
- Stainless steel piano hinge and lid closed via stainless steel clamps
- Full width, welded mounting flange
- Inner panel sold separately (painted steel or galvanized options)

Part Number	H	W	D	Opt. Panel
HJ443HLP	4	4	3	—
HJ643HLP	6	4	3	14R0503
HJ863HLP	8	6	3.5	14R0705
HJ683HLP	6	8	3.5	14R0705
HJ444HLP	4	4	4	—
HJ644HLP	6	4	4	14R0503
HJ664HLP	6	6	4	14R0505
HJ884HLP	8	8	4	14R0707
HJ1084HLP	10	8	4	14R0907
HJ8104HLP	8	10	4	14R0907
HJ1264HLP	12	6	4	14R1105
HJ12105HLP	12	10	5	14R1109
HJ10125HLP	10	12	5	14R1109
HJ866HLP	8	6	6	14R0705
HJ1086HLP	10	8	6	14R0907
HJ10106HLP	10	10	6	14R0909
HJ12126HLP	12	12	6	14R1111
HJ1486HLP	14	8	6	14R1307
HJ14126HLP	14	12	6	14R1311
HJ12146HLP	12	14	6	14R1311
HJ16106HLP	16	10	6	14R1509
HJ16146HLP	16	14	6	14R1513
HJ14166HLP	14	16	6	14R1513
HJ12108HLP	12	10	8	14R1109
HJ14128HLP	14	12	8	14R1311
HJ16148HLP	16	14	8	14R1513
HJ161410HLP	16	14	10	14R1513

Scan the code or visit the following link for complete product details.

[hammfg.com/product/hjh](http://hammfg.com/product/hjh)





## Type 4 Mild Steel Wallmount Enclosure *HWHK Series* Hinge Door with Handle



Panel  
Sold  
Separately

### Key Features:

- Designed for frequently accessed cabinets in rugged environments
- Heavy duty 14 gauge steel construction, carrying UL/CSA Type 4/12
- Rugged piano hinge opens door 180°
- Durable zinc diecast handle with padlock provision
- Smooth action 3 point locking system
- Inner panel sold separately

Part Number	H	W	D	Opt. Panel*
HW24206GYHK	24	20	6	18P2117
HW24246GYHK	24	24	6	18P2121
HW24168GYHK	24	16	8	18P2113
HW24208GYHK	24	20	8	18P2117
HW24248GYHK	24	24	8	18P2121
HW24308GYHK	24	30	8	18P2721
HW30208GYHK	30	20	8	18P2717
HW30248GYHK	30	24	8	18P2721
HW30308GYHK	30	30	8	18P2727
HW36248GYHK	36	24	8	18P3321
HW36308GYHK	36	30	8	18P3327
HW42368GYHK	42	36	8	18P3933
HW48368GYHK	48	36	8	18P4533
HW242010GYHK	24	20	10	18P2117
HW302410GYHK	30	24	10	18P2721
HW362410GYHK	36	24	10	18P3321
HW363010GYHK	36	30	10	18P3327
HW423010GYHK	42	30	10	18P3927
HW483610GYHK	48	36	10	18P4533
HW242412GYHK	24	24	12	18P2121
HW302412GYHK	30	24	12	18P2721
HW363012GYHK	36	30	12	18P3327
HW363612GYHK	36	36	12	18P3333
HW423612GYHK	42	36	12	18P3933
HW483612GYHK	48	36	12	18P4533
HW603612GYHK	60	36	12	18P5733
HW302416GYHK	30	24	16	18P2721
HW363016GYHK	36	30	16	18P3327
HW483616GYHK	48	36	16	18P4533
HW603616GYHK	60	36	16	18P5733

\*Optional panel shown is painted - other materials available

Scan the code or visit the following link for complete product details.

[hammfg.com/product/hwhk](http://hammfg.com/product/hwhk)



Industrial Enclosures

## Type 4X Aluminum Junction Box *Eclipse Junior Series*

### Continuous Hinge Door with Quarter Turn



Inner  
Panel  
Included

#### Key Features:

- Constructed of lightweight aluminum - ideal for use on poles or other weight sensitive needs
- UL/CSA Type 4X approval ensures watertight protection in corrosive environments
- Interior easily accessed interior via 316 stainless steel quarter turn latch
- Full width mounting flange allows for quick wall or post installation
- Comes complete with a removable, galvanized inner mounting panel (excluding 4"x4" size)

Part Number	H	W	D
EJ443AL	4	4	3
EJ643AL	6	4	3
EJ863AL	8	6	3.5
EJ444AL	4	4	4
EJ644AL	6	4	4
EJ664AL	6	6	4
EJ884AL	8	8	4
EJ1084AL	10	8	4
EJ1264AL	12	6	4
EJ12124AL	12	12	4
EJ12105AL	12	10	5
EJ866AL	8	6	6
EJ1086AL	10	8	6
EJ10106AL	10	10	6
EJ12106AL	12	10	6
EJ12126AL	12	12	6
EJ14126AL	14	12	6
EJ16146AL	16	14	6
EJ12108AL	12	10	8
EJ14128AL	14	12	8
EJ16148AL	16	14	8
EJ161410AL	16	14	10

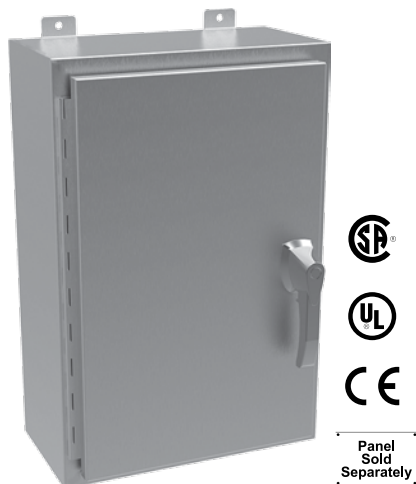
Scan the code or visit the following link for complete product details.

[hammfg.com/product/ejal](http://hammfg.com/product/ejal)





## Type 4X Stainless Steel Wallmount Enclosure *HWN4SSHK Series* Hinge Door with Handle



### Key Features:

- Designed for frequently accessed cabinets in harsh environments
- Heavy duty 304 or 316L stainless steel construction, carrying UL/CSA Type 4X
- Rugged piano hinge opens door 180°
- Durable stainless handle with padlock provision
- Smooth action 3 point locking system
- Inner panel sold separately

Part Number 304 SS	Part Number 316 SS	H	W	D	Opt. Panel*
HW24206SSHK	HW24206S16HK	24	20	6	18P2117
HW24246SSHK	HW24246S16HK	24	24	6	18P2121
HW24168SSHK	HW24168S16HK	24	16	8	18P2113
HW24208SSHK	HW24208S16HK	24	20	8	18P2117
HW24248SSHK	HW24248S16HK	24	24	8	18P2121
HW24308SSHK	HW24308S16HK	24	30	8	18P2721
HW30208SSHK	HW30208S16HK	30	20	8	18P2717
HW30248SSHK	HW30248S16HK	30	24	8	18P2721
HW30308SSHK	HW30308S16HK	30	30	8	18P2727
HW36248SSHK	HW36248S16HK	36	24	8	18P3321
HW36308SSHK	HW36308S16HK	36	30	8	18P3327
HW42368SSHK	HW42368S16HK	42	36	8	18P3933
HW48368SSHK	HW48368S16HK	48	36	8	18P4533
HW242010SSHK	HW242010S16HK	24	20	10	18P2117
HW302410SSHK	HW302410S16HK	30	24	10	18P2721
HW362410SSHK	HW362410S16HK	36	24	10	18P3321
HW363010SSHK	HW363010S16HK	36	30	10	18P3327
HW423010SSHK	HW423010S16HK	42	30	10	18P3927
HW483610SSHK	HW483610S16HK	48	36	10	18P4533
HW242412SSHK	HW242412S16HK	24	24	12	18P2121
HW302412SSHK	HW302412S16HK	30	24	12	18P2721
HW363012SSHK	HW363012S16HK	36	30	12	18P3327
HW363612SSHK	HW363612S16HK	36	36	12	18P3333
HW423612SSHK	HW423612S16HK	42	36	12	18P3933
HW483612SSHK	HW483612S16HK	48	36	12	18P4533
HW603612SSHK	HW603612S16HK	60	36	12	18P5733
HW302416SSHK	HW302416S16HK	30	24	16	18P2721
HW363016SSHK	HW363016S16HK	36	30	16	18P3327
HW483616SSHK	HW483616S16HK	48	36	16	18P4533
HW603616SSHK	HW603616S16HK	60	36	16	18P5733

\*Optional panel shown is painted - other materials available

Scan the code or visit the following link for complete product details.

[hammfg.com/product/hwn4sshk](http://hammfg.com/product/hwn4sshk)



Corrosion Resistant Enclosures

# Type 4X Stainless Steel Wallmount Enclosure *Waterfall Series*

## Sloped Top with Quarter Turns



### Key Features:

- Waterfall Series - Ideal for wash down applications
- NSF (food industry) Splash Zone and UL/CSA Type 4X approvals
- Sloped top sheds water during wash down
- Smooth #4 finish 304 or 316L stainless steel construction
- Easy-clean exterior bullet hinges open door 180°
- Exaggerated flange trough collar channels water and protects gasket
- Inner panel sold separately

Part Number 304 SS	Part Number 316 SS	H-Front	H-Back	W	D	Opt. Panel*
HWST16128SS	HWST16128S16	16	19.7	12	8	18P1309
HWST16168SS	HWST16168S16	16	19.7	16	8	18P1313
HWST20168SS	HWST20168S16	20	23.7	16	8	18P1713
HWST20208SS	HWST20208S16	20	23.7	20	8	18P1717
HWST24208SS	HWST24208S16	24	27.7	20	8	18P2117
HWST24248SS	HWST24248S16	24	27.7	24	8	18P2121
HWST30248SS	HWST30248S16	30	33.7	24	8	18P2721
HWST30308SS	HWST30308S16	30	33.7	30	8	18P2727
HWST36308SS	HWST36308S16	36	39.7	30	8	18P3327
HWST201612SS	HWST201612S16	20	25.5	16	12	18P1713
HWST202012SS	HWST202012S16	20	25.5	20	12	18P1717
HWST242412SS	HWST242412S16	24	29.5	24	12	18P2121
HWST302412SS	HWST302412S16	30	35.5	24	12	18P2721
HWST363012SS	HWST363012S16	36	41.5	30	12	18P3327
HWST363612SS	HWST363612S16	36	41.5	36	12	18P3333
HWST363016SS	HWST363016S16	36	43.4	30	16	18P3327
HWST483616SS	HWST483616S16	48	55.4	36	16	18P4533
HWST603616SS	HWST603616S16	60	67.4	36	16	18P5733

\*Optional panel shown is painted - other materials available

Scan the code or visit the following link for complete product details.

[hammfg.com/product/hwstss](http://hammfg.com/product/hwstss)



Corrosion Resistant Enclosures

## Wallmount Stand-offs *STMF Series* Waterfall Series Accessory



### Key Features:

- Wallmount Stand-offs provide access space for cleaning between enclosure and mounting surface
- Installs into pre-drilled mounting holes in rear of enclosure
- 316L stainless steel construction and offered in several lengths
- Set of 4

Part Number	Description
ST1MFSS316	1" Stand-off
ST2MFSS316	2" Stand-off
ST4MFSS316	4" Stand-off
ST6MFSS316	6" Stand-off

Scan the code or visit the following link for complete product details.

[hammfg.com/product/stmf](http://hammfg.com/product/stmf)



## Wash Down Floor Stand Kit *WDFSKSS Series* Waterfall Series Accessory



### Key Features:

- Washdown floor stand kits raise enclosure off floor and their streamlined design provides for efficient cleaning
- Fixed height version adds 12" height to enclosure
- Adjustable height version offers 1" of adjustment – ideal as a leveling foot
- 316L stainless steel construction
- Sold in pairs

Part Number	Description
AKIT316ST	Adjustable Height Floor Stand (pair)
FKIT316ST12	12" Fixed Floor Stand (pair)

Scan the code or visit the following link for complete product details.

[hammfg.com/product/wdfskss](http://hammfg.com/product/wdfskss)



## Washdown Quarter Turn Assemblies *EQTFG Series*

### Waterfall Series Accessory



Part Number	Description
EQTFG	Quarter Turn Latch (ea.)
EFGK	Key (ea.)

Scan the code or visit the following link for complete product details.

[hammfg.com/product/eqtfq](http://hammfg.com/product/eqtfq)



#### Key Features:

- Unique no-crevice design ideal for food and beverage applications
- Replaces standard quarter turn provided with enclosure
- 316L stainless steel construction featuring Red, silicon O-Ring
- Sold individually

Corrosion Resistant Enclosures

## Type 4X Polyester Wallmount Enclosure *PJW Series*

### Continuous Hinge Door with Twist Latches and 3 Pt Handle



Panel  
Sold  
Separately

Part Number	H	W	D	Opt. Panel
PJEC3630123PT	36.48	30.50	12.18	18P3327
PJW363014L3PT	36.25	30.25	14.13	18P3327
PJW363610L3PT	36.25	36.25	10.13	18P3333
PJW363614L3PT	36.25	36.25	14.13	18P3333
PJW483610L3PT	48.25	36.25	10.13	18P4533
PJW483614L3PT	48.25	36.25	14.13	18P4533
PJW603610L3PT	60.25	36.25	10.13	18P5733
PJW603614L3PT	60.25	36.25	14.13	18P5733

Scan the code or visit the following link for complete product details.

[hammfg.com/product/pjwl](http://hammfg.com/product/pjwl)



#### Key Features:

- Large FRP wallmount series offered with 3 point 316 stainless steel handle
- Maintains UL/CSA Type 4X ratings
- Same great features as the established twist latch door version
- Fiberglass reinforced polyester material is gray
- Inner mounting panel sold separately
- Note 36x30x10 has been replaced with 36x30x12

Corrosion Resistant Enclosures

## Type 4X Fiberglass Junction Box *PJHD Series*

### Heavy Duty PJ Snap Latch



Panel  
Sold  
Separately

Part Number	H	W	D
PJHD181610RLF	18.24	16.24	10

Scan the code or visit the following link for complete product details.

[hammfg.com/product/pjhd](http://hammfg.com/product/pjhd)



#### Key Features:

- Thick walled, heavy duty 18x16x10 non-metallic enclosure
- Ideal to insulate and house off grid solar batteries or remote monitoring equipment in outdoor applications
- Especially well suited for high temperature or UL/CSA Type 4X corrosive environment
- Moulded in UV stabilized "Ultraguard" FRP material
- Hinged door with padlockable snap latches featuring 316 stainless hardware

## Type 4X Polycarbonate Junction Box *PCJ Series*

### Screw Cover



Solid Cover, Flange version



Scan the code or visit the following link for complete product details.



hammfg.com/product/pcj-sc

Part # Solid Cover Flange	Part # Solid Cover Mounting Feet	Part # Clear Cover Flange	Part # Clear Cover Mounting Feet	H	W	D
PCJ664F	PCJ664	PCJ664CCF	PCJ664CC	5.93	6.16	3.98
PCJ864F	PCJ864	PCJ864CCF	PCJ864CC	7.94	6.16	3.98
PCJ884F	PCJ884	PCJ884CCF	PCJ884CC	7.94	8.15	3.98
PCJ1084F	PCJ1084	PCJ1084CCF	PCJ1084CC	9.93	8.15	3.98
PCJ12106F	PCJ12106	PCJ12106CCF	PCJ12106CC	11.92	10.15	5.98
PCJ14126F	PCJ14126	PCJ14126CCF	PCJ14126CC	13.94	12.16	5.98
PCJ16148F	PCJ16148	PCJ16148CCF	PCJ16148CC	15.98	13.98	7.81
PCJ181610F	PCJ181610	PCJ181610CCF	PCJ181610CC	18.04	16.04	9.81

## Type 4X Polycarbonate Junction Box *PCJ Series*

### Hinged Screw Cover



Solid Cover, Mtg Feet version



Scan the code or visit the following link for complete product details.



hammfg.com/product/pcj-hsc

Part # Solid Cover Flange	Part # Solid Cover Mounting Feet	Part # Clear Cover Flange	Part # Clear Cover Mounting Feet	H	W	D
PCJ664HF	PCJ664H	PCJ664CCHF	PCJ664CCH	5.93	6.16	3.98
PCJ864HF	PCJ864H	PCJ864CCHF	PCJ864CCH	7.94	6.16	3.98
PCJ884HF	PCJ884H	PCJ884CCHF	PCJ884CCH	7.94	8.15	3.98
PCJ1084HF	PCJ1084H	PCJ1084CCHF	PCJ1084CCH	9.93	8.15	3.98
PCJ12106HF	PCJ12106H	PCJ12106CCHF	PCJ12106CCH	11.92	10.15	5.98
PCJ14126HF	PCJ14126H	PCJ14126CCHF	PCJ14126CCH	13.94	12.16	5.98
PCJ16148HF	PCJ16148H	PCJ16148CCHF	PCJ16148CCH	15.98	13.98	7.81
PCJ181610HF	PCJ181610H	PCJ181610CCHF	PCJ181610CCH	18.04	16.04	9.81

## Type 4X Polycarbonate Junction Box *PCJ Series* Metal Latch Cover



Solid Cover, Mtg Feet version



Scan the code or visit the following link for complete product details.



[hammfg.com/product/pcj-sl](http://hammfg.com/product/pcj-sl)

Part # Solid Cover Flange	Part # Solid Cover Mounting Feet	Part # Clear Cover Flange	Part # Clear Cover Mounting Feet	H	W	D
PCJ664LF	PCJ664L	PCJ664CCLF	PCJ664CCL	5.93	6.16	3.98
PCJ864LF	PCJ864L	PCJ864CCLF	PCJ864CCL	7.94	6.16	3.98
PCJ884LF	PCJ884L	PCJ884CCLF	PCJ884CCL	7.94	8.15	3.98
PCJ1084LF	PCJ1084L	PCJ1084CCLF	PCJ1084CCL	9.93	8.15	3.98
PCJ12106LF	PCJ12106L	PCJ12106CCLF	PCJ12106CCL	11.92	10.15	5.98
PCJ14126LF	PCJ14126L	PCJ14126CCLF	PCJ14126CCL	13.94	12.16	5.98
PCJ16148LF	PCJ16148L	PCJ16148CCLF	PCJ16148CCL	15.98	13.98	7.81
PCJ181610LF	PCJ181610L	PCJ181610CCLF	PCJ181610CCL	18.04	16.04	9.81

## Type 4X Polycarbonate Junction Box *PCJ Series* Non-Metallic Latch Cover



Solid Cover, Flange version



Scan the code or visit the following link for complete product details.



[hammfg.com/product/pcj-nsl](http://hammfg.com/product/pcj-nsl)

Part # Solid Cover Flange	Part # Solid Cover Mounting Feet	Part # Clear Cover Flange	Part # Clear Cover Mounting Feet	H	W	D
PCJ664NLF	PCJ664NL	PCJ664CCNLF	PCJ664CCNL	5.93	6.16	3.98
PCJ864NLF	PCJ864NL	PCJ864CCNLF	PCJ864CCNL	7.94	6.16	3.98
PCJ884NLF	PCJ884NL	PCJ884CCNLF	PCJ884CCNL	7.94	8.15	3.98
PCJ1084NLF	PCJ1084NL	PCJ1084CCNLF	PCJ1084CCNL	9.93	8.15	3.98
PCJ12106NLF	PCJ12106NL	PCJ12106CCNLF	PCJ12106CCNL	11.92	10.15	5.98
PCJ14126NLF	PCJ14126NL	PCJ14126CCNLF	PCJ14126CCNL	13.94	12.16	5.98
PCJ16148NLF	PCJ16148NL	PCJ16148CCNLF	PCJ16148CCNL	15.98	13.98	7.81
PCJ181610NLF	PCJ181610NL	PCJ181610CCNLF	PCJ181610CCNL	18.04	16.04	9.81

Corrosion Resistant Enclosures



## Inner Panels *PCJP Series*

### PCJ Series Accessory



Part Number Mild Steel	Part Number Aluminum	Panel L	Panel W	For Use With Part Number
PCJR0505	PCJA0505	4.81	4.81	PCJ664
PCJR0705	PCJA0705	6.75	4.88	PCJ864
PCJR0808	PCJA0808	6.75	6.88	PCJ884
PCJR0907	PCJA0907	8.75	6.88	PCJ1084
PCJR1109	PCJA1109	10.75	8.88	PCJ12106
PCJR1311	PCJA1311	12.75	10.88	PCJ14126
PCJR1614	PCJA1614	14.75	12.88	PCJ16148
PCJR1816	PCJA1816	16.88	14.88	PCJ181610

#### Key Features:

- Inner mounting panels designed specifically for the new PCJ Series
- Panels are sold separate for the PCJ Series enclosures
- 14 gauge steel panels are painted white
- Aluminum panels are 0.080" thick type 5052 H-32 aluminium, unpainted
- Panel mounting hardware is included with PCJ Series enclosures



Scan the code or visit the following link for complete product details.

[hammfg.com/product/pcjp](http://hammfg.com/product/pcjp)

Corrosion Resistant Enclosures

## Swing Panel *PCJSP Series*

### PCJ Series Accessory



Part Number	For Use With Part Number
PCJHFPP66	PCJ664
PCJHFPP86	PCJ864
PCJHFPP88	PCJ884
PCJHFPP108	PCJ1084
PCJHFPP1210	PCJ12106
PCJHFPP1412	PCJ14126
PCJHFPP1614	PCJ16148
PCJHFPP1816	PCJ181610

#### Key Features:

- Swing panel solution designed specifically for the new PCJ Series
- Hinged panel installed on corner sliders allowing adjustable depth setting
- Can be installed hinged either right or left swing
- Field installed with no drilling required



Scan the code or visit the following link for complete product details.

[hammfg.com/product/pcjsp](http://hammfg.com/product/pcjsp)

## Type 4 Mild Steel Wallmount Disconnect Enclosure *1447SHK Series*

Continuous Hinge Door (Flange w/ multi-vendor cutout) with Defeater Handle



Inner  
Panel  
Included

### Key Features:

- Enclosure accommodates flange mount disconnect operator from numerous vendors
- Includes heavy duty defeater handle with padlock provision
- UL/CSA Type 4 approvals allow for indoor or outdoor use
- Features seamless gasket, removable piano hinge and formed lip on body
- Constructed from heavy duty 14 gauge steel and painted ANSI 61 gray
- Includes white painted steel inner mounting panel

Part Number	H	W	D
1447SA8HK	20	21.38	8
1447SB8HK	24	21.38	8
1447SC8HK	24	25.38	8
1447SD8HK	30	21.38	8
1447SE8HK	30	25.38	8
1447SF8HK	36	25.38	8
1447SG8HK	36	31.38	8
1447SH8HK	42	31.38	8
1447SJ8HK	42	37.38	8
1447SK8HK	48	37.38	8
1447SL8HK	60	37.38	8
1447SA10HK	20	21.38	10
1447SB10HK	24	21.38	10
1447SC10HK	24	25.38	10
1447SD10HK	30	21.38	10
1447SE10HK	30	25.38	10
1447SF10HK	36	25.38	10
1447SG10HK	36	31.38	10
1447SH10HK	42	31.38	10
1447SJ10HK	42	37.38	10
1447SQ10HK	48	25.4	10
1447SK10HK	48	37.38	10
1447SL10HK	60	37.38	10
1447SE12HK	30	25.38	12
1447SG12HK	36	31.38	12
1447SH12HK	42	31.38	12
1447SJ12HK	42	37.38	12
1447SK12HK	48	37.38	12
1447SL12HK	60	37.38	12
1447SG16HK	36	31.38	16
1447SH16HK	42	31.38	16
1447SJ16HK	42	37.38	16
1447SK16HK	48	37.38	16
1447SL16HK	60	37.38	16

Disconnect Enclosures

Scan the code or visit the following link for complete product details.

[hammfg.com/product/1447shk](http://hammfg.com/product/1447shk)



## Inner Panels and Supports *HMEP Series*



Inner Panel Rear Support



Inner Panel Side Support

### Updated:

- New panel sizes added to complement new modular cabinet sizes - check online for the full offering
- Added Inner Panel Rear Supports (HMEPR) for panels with larger weight loads requiring added stiffening on the panel
- Added Inner Panel Side Support (HIPSPK) for additional panel bracing - attaches to rear of frame or optional grid straps

Scan the code or visit the following link for complete product details.

[hammfg.com/product/hmep](http://hammfg.com/product/hmep)



## Plinth *HMEPL Series*



Part Number	H (mm)	W (mm)	D (mm)
HPB165	100	600	500
HPB185	100	800	500
HPB1105	100	1000	500
HPB1125	100	1200	500
HPB1165	100	1600	500

Scan the code or visit the following link for complete product details.

[hammfg.com/product/hmepl](http://hammfg.com/product/hmepl)



### Updated:

- Single component solid plinth added to existing modular plinth offering
- Complete with 2 removable gland plates for cabling access
- Compatible with HME leveling feet
- Finished in textured black powder paint
- Additional sizes available on special order

## Type 4, 4X Stainless Steel Pushbutton Enclosures *1437SS Series* Extra Deep



Part Number 304 SS 22.5mm	Part Number 316 SS 22.5mm	Holes	A	B	C
1437MSSA	1437MS16A <sup>1</sup>	1	4	4	4.75
1437MSSB	1437MS16B	2	6	4	4.75
1437MSSC	1437MS16C	3	8	4	4.75
1437MSSD	1437MS16D	4	10	4	4.75
1437SMSS	-	16	11.75	10.75	4.75

Scan the code or visit the following  
link for complete product details.

[hammfg.com/product/1437ss](http://hammfg.com/product/1437ss)



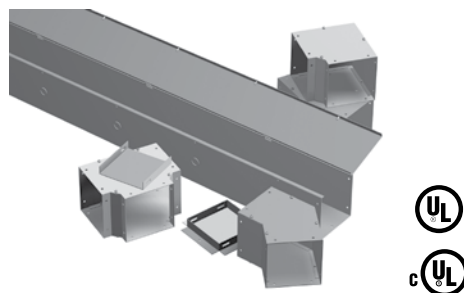
### Updated:

- Now available for use with 22.5 mm pushbutton devices
- Complements current 30.5 mm offering

Operator Interface Enclosures

## Type 1 Lay-In Wireway *CW Series*

### Wireway & Accessories



#### Expanded:

- Updated offering to have both hinged and screw cover versions now available with or without knockouts
- Full range of lengths and fittings in 2.5x2.5" to 12x12" cross sections
- UL-50/cUL Type 1 approvals

Scan the code or visit the following link for complete product details.

[hammfg.com/product/cw](http://hammfg.com/product/cw)



## Type 4X Stainless Steel Pull Through Wireway *1487SS Series*

### Wireway & Accessories



#### Key Features:

- Cable management solution for corrosive, wet environments
- System of 304 stainless steel lengths (1-10 feet long) and various connecting fittings
- Heavy duty 10 gauge flanges and 14 gauge body construction
- Lids are hinged for easy access and secured with clamps
- Permanently secured gaskets on all lids and gasket kits provided for use between flanges
- UL870 Type 1, CSA Type 1 (except where part number marked with "1")

Scan the code or visit the following link for complete product details.

[hammfg.com/product/1487ss](http://hammfg.com/product/1487ss)



Description	Part # (4x4)	Part # (6x6)	Part # (8x8)
12" Section	1487C12SS	1487D12SS	1487E12SS
24" Section	1487C24SS	1487D24SS	1487E24SS
36" Section	1487C36SS	1487D36SS	1487E36SS
48" Section	1487C48SS	1487D48SS	1487E48SS
60" Section	1487C60SS	1487D60SS	1487E60SS
120" Section	1487C120SS	1487D120SS	1487E120SS
6" Nipple	1487CM6SS	1487DM6SS	1487EM6SS
Standard Swivel Nipple	1487CV2SS	1487DV2SS	1487EV2SS
Flexible Fitting	1487CFFSS <sup>1</sup>	1487DFFSS <sup>1</sup>	1487EFFSS <sup>1</sup>
Adjustable Fitting	1487CXSS <sup>1</sup>	1487DXSS <sup>1</sup>	1487EXSS <sup>1</sup>
90° Elbow	1487C9PSS	1487D9PSS	1487E9PSS
45° Elbow	1487C4PSS	1487D4PSS	1487E4PSS
Tee Fitting	1487CTSS	1487DTSS	1487ETSS
<b>Center Hole Reducers</b>			
Reducer - 6 x 6 to 4 x 4	—	1487DRCSS <sup>2</sup>	—
Reducer - 8 x 8 to 4 x 4	—	—	1487ERCSS <sup>2</sup>
Reducer - 8 x 8 to 6 x 6	—	—	1487ERCDSS <sup>2</sup>
<b>Edge Hole Reducers</b>			
Reducer 6 x 6 to 4 x 4	—	1487DRESS <sup>2</sup>	—
Reducer 8 x 8 to 4 x 4	—	—	1487ERECSS <sup>2</sup>
Reducer 8 x 8 to 6 x 6	—	—	1487EREDSS <sup>2</sup>
Box Connector	1487CKSS <sup>1</sup>	1487DKSS <sup>1</sup>	1487EKSS <sup>1</sup>
Drop Hanger	1487CL1SS <sup>1</sup>	1487DL1SS <sup>1</sup>	1487EL1SS <sup>1</sup>
Bracket Hanger	1487CL2SS <sup>1</sup>	1487DL2SS <sup>1</sup>	1487EL2SS <sup>1</sup>
Cover Plate	1487CHSS <sup>2</sup>	1487DHSS <sup>2</sup>	1487EHSS <sup>2</sup>
Gasket & Screws	1487CSSS <sup>1</sup>	1487DSSS <sup>1</sup>	1487ESSS <sup>1</sup>

## Type 1 Unpainted Galvanized Steel Junction Box *CSG Series*

### Screw Cover and without Knockouts



#### Key Features:

- Unpainted, G90 galvanized steel Type 1 junction box
- Sides free of knock-outs
- Easy access with screws and key-hole slots in lid
- Mounts to wall via holes in back of body
- Embossed grounding point on body

Part Number	H	W	D
CSG664	6	6	4
CSG884	8	8	4
CSG10104	10	10	4
CSG12124	12	12	4
CSG666	6	6	6
CSG886	8	8	6
CSG10106	10	10	6
CSG12106	12	10	6
CSG12126	12	12	6
CSG18126	18	12	6
CSG18186	18	18	6
CSG24246	24	24	6
CSG12128	12	12	8
CSG18188	18	18	8
CSG24248	24	24	8

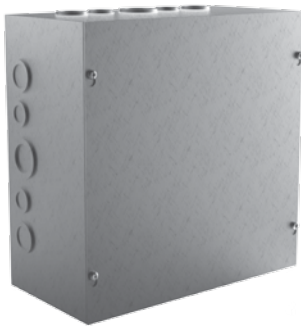
Scan the code or visit the following link for complete product details.

[hammfg.com/product/csg](http://hammfg.com/product/csg)



## Type 1 Unpainted Galvanized Steel Junction Box *CSKOG Series*

### Screw Cover and w/ Knockouts



#### Key Features:

- Unpainted, G90 galvanized steel Type 1 junction box
- Easy to use knock-outs on 4 sides (see webpage for details)
- Easy access with screws and key-hole slots in lid
- Mounts to wall via holes in back of body
- Embossed grounding point on body

Part Number	H	W	D
CSKOG664	6	6	4
CSKOG884	8	8	4
CSKOG10104	10	10	4
CSKOG12124	12	12	4
CSKOG666	6	6	6
CSKOG886	8	8	6
CSKOG10106	10	10	6
CSKOG12126	12	12	6
CSKOG12128	12	12	8

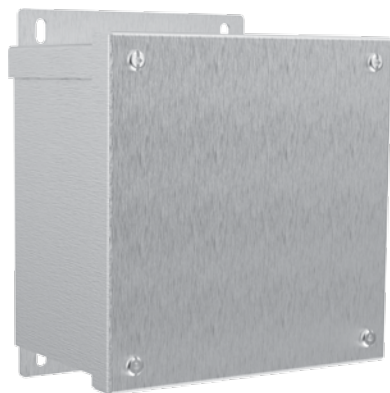
Scan the code or visit the following link for complete product details.

[hammfg.com/product/cskog](http://hammfg.com/product/cskog)



## Type 3R Aluminum Junction Box *C3RESCNKAL Series*

### Screw Cover and without Knockouts



Part Number	H	W	D
C3R664ESCNKAL	6	6	4
C3R884ESCNKAL	8	8	4
C3R886ESCNKAL	8	8	6
C3R10104ESCNKAL	10	10	4
C3R10106ESCNKAL	10	10	6
C3R12124ESCNKAL	12	12	4
C3R12126ESCNKAL	12	12	6

#### Key Features:

- Economically priced UL/CSA Type 3R junction box
- Constructed of lightweight aluminum - ideal for use on poles or other weight sensitive needs
- Easily accessed interior via screw on lid
- Full width mounting flange allows for quick wall or post installation
- Lid is gasketed for enhanced water protection

Scan the code or visit the following link for complete product details.

[hammfg.com/product/c3rescnkal](http://hammfg.com/product/c3rescnkal)



Commercial Enclosures

## Type 3R Painted Galvanized Steel Junction Box *C3RESCNK Series*

### Screw Cover and without Knockouts



Part Number	H	W	D
C3R664ESCNK	6	6	4
C3R884ESCNK	8	8	4
C3R886ESCNK	8	8	6
C3R10104ESCNK	10	10	4
C3R10106ESCNK	10	10	6
C3R12124ESCNK	12	12	4
C3R12126ESCNK	12	12	6
C3R16166ESCNK	16	16	6
C3R18186ESCNK	18	18	6
C3R24246ESCNK	24	24	6

#### Key Features:

- Economically priced UL/CSA Type 3R junction box
- Galvanized steel powder coated ANSI 61 gray
- Easily accessed interior via screw on lid
- Full width mounting flange allows for quick wall or post installation
- Lid is gasketed for enhanced water protection

Scan the code or visit the following link for complete product details.

[hammfg.com/product/c3rescnk](http://hammfg.com/product/c3rescnk)





## 900-1300 BTU Air Conditioner *DTS30X1 Series* Type 12, 3R/4 and 4X Versions



Part Number	Type Rating	Material	Voltage
DTS3021A115LG	Type 12	Painted Steel	115V 60Hz
DTS3021A230LG	Type 12	Painted Steel	230V 50/60Hz
DTS3031A115N3LG	Type 3R,4	Painted Steel	115V 60Hz
DTS3031A230N3LG	Type 3R,4	Painted Steel	230V 50/60Hz
DTS3031A115N4SS	Type 4X	Stainless Steel	115V 60Hz
DTS3031A230N4SS	Type 4X	Stainless Steel	230V 50/60Hz

### Key Features:

- 900-1300 BTU range capacity
- Compact size for smaller indoor enclosures (15.5"H x 7"Wx7.75"D)
- Ideal for hot spots or low capacity cooling needs
- Offered in 3 versions - Type 12 (indoor), Type 3R/4 (outdoor) and Type 4X (corrosion resistant)
- Available in 115V and 230V

#### TYPE 12 Details

Scan the code or visit the following link for complete product details.

[hammfg.com/product/3021](http://hammfg.com/product/3021)



#### TYPE 3R/4 Details

Scan the code or visit the following link for complete product details.

[hammfg.com/product/3031](http://hammfg.com/product/3031)



#### TYPE 4X Details

Scan the code or visit the following link for complete product details.

[hammfg.com/product/3031SS](http://hammfg.com/product/3031SS)



Climate Control Products

## Condensate Overflow Bottle *CONDBTL Series* Air Conditioner Accessory



#### Part Number

18314000100

### Key Features:

- External container for condensate drain run off
- For use with any DTS, DTT or PWS cooling product
- Complete with bottle mounting bracket

Scan the code or visit the following link for complete product details.

[hammfg.com/product/condbtl](http://hammfg.com/product/condbtl)



## Filter Kits *DTSFK Series*

### For DTS3XXX Series Air Conditioners



Part Number	Description
18881500008	Filter kit for DTS 3021/3031 series
18881500005	Filter kit for DTS 3041/3061 series
18881500009	Filter kit for DTS 31xx series
18881500006	Filter kit for DTS 31x1SL/31x5 series
18881500001	Filter kit for DTS 32xx series
18881500007	Filter kit for DTS 32x5 series
18881500010	Filter kit for DTS 34xx series
18881500004	Filter kit for DTS 36xx series

#### Key Features:

- Sizes have been redefined since E6 Catalog
- Field install filter kit for Condenser Fan intake
- Washable Aluminum mesh

Scan the code or visit the following link for complete product details.

[hammfg.com/product/dtsfk](http://hammfg.com/product/dtsfk)



## Filter Kits *PFFG4 Series*

### For PF Series Type 12 Filter Fans



Part Number	Use with 4th Gen FF
PFF10000*	PF/PFA 1XXXX
PFF20000	PF/PFA 2XXXX
PFF30000	PF/PFA 3XXXX
PFF40000	PF/PFA 4XXXX
PFF60000	PF/PFA 6XXXX
PFFT60001	PTF60500/PTFA60500
PFFT60002	PTF60700/61000

\* Synthetic Filter Mat

#### Key Features:

- Special patent pending fluted filter design increases the time between maintenance by 3X.
- Expanded filter surface area allows for greater CFM in dirty environments
- Sold in Packs of 5.

Scan the code or visit the following link for complete product details.

[hammfg.com/product/pffg4](http://hammfg.com/product/pffg4)



## Type 3R Louvered Vent Kits *1481L3R Series* Ventilation Accessory



Part Number		Overall Size H x W (inches)	Number of Louvers	Louver Length (in)
ANSI 61 Gray	Stainless Steel			
1481L3R55GY	1481L3R55SS	5.56 x 5.30	3	3
1481L3R56GY	1481L3R56SS	5.30 x 6.30	3	4
1481L3R66GY	1481L3R66SS	6.40 x 6.30	4	4
1481L3R68GY		6.40 x 8.30	4	6
1481L3R88GY		8.69 x 8.30	6	6
1481L3R610GY		6.62 x 10.30	4	8
1481L3R810GY		9.0 x 10.30	6	8
1481L3R1110GY		11.37 x 10.30	8	8
1481L3R1510GY		16.12 x 10.30	9	8

### Key Features:

- Provides ventilation in enclosures for either Indoor or outdoor locations
- Includes louver plate, aluminum mesh filter and brackets
- Gasketed sealing kit provides protection to NEMA 3R
- Aluminum filter mesh provides ingress protection for both solid debris and outdoor rain conditions
- Easily field install kit includes all hardware.
- Louver plates are offered in both 14 gauge steel with ANSI61 Gray power coat finish or 304 Stainless Steel

### Replacement Aluminum Filters

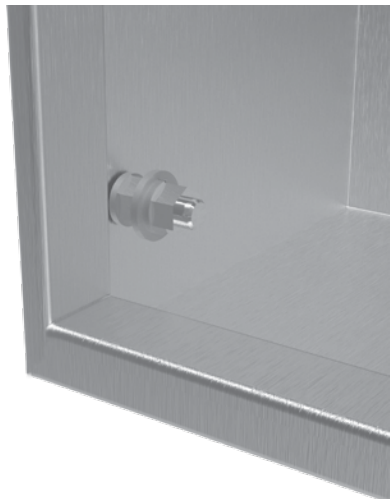
Part Number	Size H x W (in)
LFK55	3.15 x 3.00
LFK56	2.90 x 4.00
LFK66	4.02 x 4.00
LFK68	4.02 x 6.00
LFK88	6.28 x 6.00
LFK610	4.21 x 8.00
LFK810	6.59 x 8.00
LFK1110	8.96 x 8.00
LFK1510	13.71 x 8.00

Scan the code or visit the following link for complete product details.

[hammfg.com/product/1481L3R](http://hammfg.com/product/1481L3R)



## Ground Stud Kit *DRDT Series*


**Part Number**
**GRDT375**

Scan the code or visit the following link for complete product details.

[hammfg.com/product/drdt](http://hammfg.com/product/drdt)


**Key Features:**

- Ground Lug provides continuous ground through enclosure body
- O-ring seals securely within a precision groove outside dimension 0.875"
- Brass 3/8-16 thread both ends
- 1" threaded portion
- Mounting hardware included (requires drilling of .425" hole)

## Accessories

## Ground Wire Kits *GRDKIT Series*



Part Number	Description	Length
GRDKIT01	Includes (2) ground cables.	12"
GRDKIT02	Includes (6) ground cables.	16"
GRDKIT03	Includes (1) ground cable with #10 hardware only.	12"
GRDKIT04	Includes (4) ground cables with quick disconnecting terminals.	12"

**Key Features:**

- 12" or 16" long - 10 Gauge Copper Wire
- Terminated with crimped on terminals
- Terminal hole is 0.256" diameter
- Includes mounting hardware for both 1/4-20 or 10-32 ground studs
- Includes stick-on grounding symbols (two for each jumper)

Scan the code or visit the following link for complete product details.

[hammfg.com/product/grdkit](http://hammfg.com/product/grdkit)



## Copper Busbar *GRDBAR Series*



### Key Features:

- Designed for vertical and horizontal mounting
- Grounding bar is made from heavy-gauge copper that attaches to the inside of an enclosure, cabinet or open frame rack to provide consolidated equipment grounds
- Ground points have been drilled and tapped to accommodate a #10-32 screw (included)
- Use with Ground Wire Kits to bond equipment to busbar

Part Number	Length (mm)
GRDBAR600	400
GRDBAR800	600
GRDBARV14	1270
GRDBARV16	1473
GRDBARV18	1676
GRDBARV20	1880
GRDBARV22	2083

Scan the code or visit the following link for complete product details.

[hammfg.com/product/grdbar](http://hammfg.com/product/grdbar)



## Hole Plugs *HPN4PC Series* Polycarbonate



Part Number	Part Number	Description
HP12PCLG	HP12PCGY	Pilot Light (.50)
HP50PCLG	HP50PCGY	.5" Conduit (.875) 22mm PB (.886)
HP75PCLG	HP75PCGY	.75" Conduit (1.109) 30mm PB (1.21)
HP100PCLG	HP100PCGY	1" Conduit (1.375)
HP125PCLG	HP125PCGY	1.25" Conduit (1.734)
HP150PCLG	HP150PCGY	1.5" Conduit (1.984)
HP200PCLG	HP200PCGY	2" Conduit (2.469)
HP250PCLG	HP250PCGY	2.5" Conduit (2.969)
HP300PCLG	HP300PCGY	3" Conduit (3.594)
HP350PCLG	HP350PCGY	3.5" Conduit (4.125)
HP400PCLG	HP400PCGY	4" Conduit (4.641)

Scan the code or visit the following link for complete product details.

[hammfg.com/product/hpn4pc](http://hammfg.com/product/hpn4pc)



### Key Features:

- Type 4X Polycarbonate Hole Plug available in 11 sizes and 2 color options ANSI 61 (GY) & RAL7035 (LG)
- Compatible with enclosure wall thickness from 16 gauge to 1/4"
- Self centering, anti-rotational design for fast and easy one person installation, no tools required
- Recognized component for use with UL & CSA listed enclosures - Type 1, 3, 3R, 4, 4X
- Molded in polycarbonate with neoprene/EPDM gasket material

## Hole Plugs *HPN4SS Series*

### Stainless Steel



#### Key Features:

- Type 4X Stainless Steel Hole Plug available in 8 sizes
- Finished in brushed natural 304 stainless steel
- Oil resistant gasket
- Secured with an 8-32 x 0.55" threaded stud and stainless steel wing nut.
- Recognized component UR & cUR - Type 1, 3, 3R, 4, 4X, 12 and 13

Part Number	Description
HP22SSN4	22mm Pushbutton
HP50SSN4	.5" Conduit
HP75SSN4	.75" Conduit
HPBSSN4	30mm Pushbutton
HP100SSN4	1" Conduit
HP125SSN4	1.25" Conduit
HP150SSN4	1.5" Conduit
HP200SSN4	2" Conduit

Scan the code or visit the following link for complete product details.

[hammfg.com/product/hpn4ss](http://hammfg.com/product/hpn4ss)



Accessories

## Flush Covers *CSFC Series*

### CS/CSKO Accessory



#### Key Features:

- Oversized covers for CS/CSKO Series screw cover junction boxes
- Designed for flush mount installation requirements
- 1.5" taller and wider than standard covers
- Constructed of 16 or 14 gauge steel, Painted ANSI 61 gray
- Note - Boxes sold separately

Part Number	L	W
CSFC66	7.5	7.5
CSFC86	9.5	7.5
CSFC88	9.5	9.5
CSFC108	11.5	9.5
CSFC1010	11.5	11.5
CSFC128	13.5	9.5
CSFC1212	13.5	13.5
CSFC1616	17.5	17.5
CSFC1812	19.5	13.5
CSFC1818	19.5	19.5
CSFC2418	25.5	19.5
CSFC2424	25.5	25.5

Scan the code or visit the following link for complete product details.

[hammfg.com/product/csfc](http://hammfg.com/product/csfc)



## Gland Plates *GPM Series*



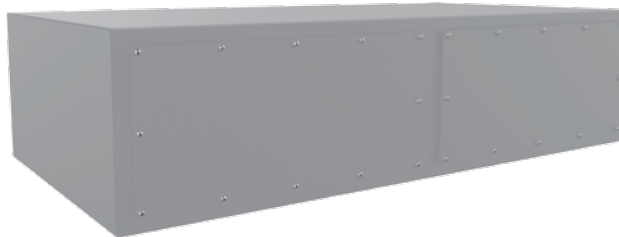
### Key Features:

- 14 gauge steel gland plate allows for easy cable entry into enclosure
- Maintains UL/CSA Type 4/12 rating, Stainless plates maintain Type 4X rating
- Hardware and cutout template included
- Modified sizes are available up to 76" x 40"
- Available in ANSI 61 Gray and RAL 7035 Light Gray
- Stainless Plates are 316 with a #4 brush finish

Part Number	Finish	H	W
GP1507LG	RAL 7035 Light Gray	15	7.5
GP2207LG	RAL 7035 Light Gray	22	7.5
GP1507GY	ANSI 61 Gray	15	7.5
GP2207GY	ANSI 61 Gray	22	7.5
GP1507S16	316 STAINLESS	15	7.5
GP2207S16	316 STAINLESS	22	7.5

Scan the code or visit the following link for complete product details.

[hammfg.com/product/gpm](http://hammfg.com/product/gpm)



### Key Features:

- Provides for cable management and slack storage space
- Pre-drilled for simple assembly onto top of freestanding enclosures
- Easily removable front panels
- Sturdy 12 gauge construction
- Provides Type 4, 12 and 3R protection
- Painted ANSI 61 gray

## Top Hat Cable Modules *HTH Series*

Part Number	H	W	D
HTH124818	12	48.06	18.06
HTH124820	12	48.06	20.06
HTH124824	12	48.06	24.06
HTH126018	12	60.06	18.06
HTH126020	12	60.06	20.06
HTH126024	12	60.06	24.06
HTH126036	12	60.06	36.06
HTH127218	12	72.06	18.06
HTH127220	12	72.06	20.06
HTH127224	12	72.06	24.06
HTH127236	12	72.06	36.06

Scan the code or visit the following link for complete product details.

[hammfg.com/product/htth](http://hammfg.com/product/htth)





**Updated:** New sizes have been added to these well established series - check online for their full offerings.

## Type 4X Stainless Steel Junction Box

*Eclipse Junior Series*

Continuous Hinge Door with Quarter Turn



Inner  
Panel  
Included

Scan the code or visit the following  
link for complete product details.

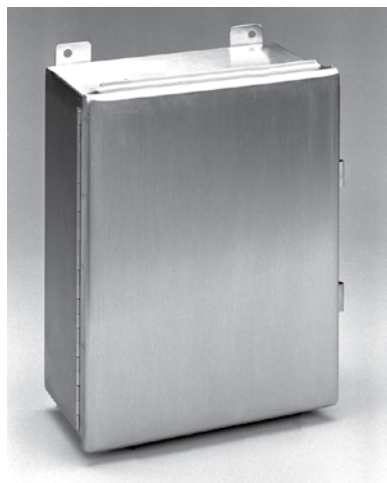
[hammfg.com/product/ejss](http://hammfg.com/product/ejss)



## Type 4X Stainless Steel Junction Box

*1414 N4 PH SS Series*

Continuous Hinge Door with Clamps



Inner  
Panel  
Included

Scan the code or visit the following  
link for complete product details.

[hammfg.com/product/1414n4phss](http://hammfg.com/product/1414n4phss)



Updated Series

## Type 4X Stainless Steel Wallmount Enclosure

*Eclipse Series*

Hinge Door with Quarter Turn/Handle



Panel  
Sold  
Separately

Scan the code or visit the following  
link for complete product details.

[hammfg.com/product/en4sdss](http://hammfg.com/product/en4sdss)



## Type 12 Mild Steel Modular Freestanding Enclosure

*HME Series*

Hinge Door w/ Various Handle Options



Inner  
Panel  
Included

Scan the code or visit the following  
link for complete product details.

[hammfg.com/product/hme](http://hammfg.com/product/hme)



# Service Excellence.

Our difference is industry leading service you can trust.

We know there are many enclosure supplier alternatives, but it's our service that makes Hammond different.

We've committed our people and resources to ensuring you get exactly what you need, when you need it.



Hammond Distribution Center



## What Service Excellence means for you:

In today's competitive business climate, the Hammond focus on service helps you where it counts most – on the bottom line.

- Superior fill rates means less inventory you need to keep on hand
- Quick, reliable delivery means fewer expedites and costly project delays
- Efficient phone support means less time waiting, more time doing what you do best

# Quality Products.

- Hammond understands that inconsistent quality can cost you valuable time and money – that's why quality is a priority for us.
- When enclosures protect very valuable equipment or are a key component to an OEM's finished product, compromising on enclosure quality is not a valid option.
- Hammond products carry the industry recognized approvals and our facility is ISO9001:2008 Certified
- Our many years of experience developing and manufacturing enclosure solutions provides a confidence that Hammond will meet and exceed your quality expectations.





# HAMMOND MANUFACTURING®

For Drawings & Product Information  
visit: [hammondmfg.com](http://hammondmfg.com)

Designed for real world applications:



## CANADA

Hammond Manufacturing Company Limited  
394 Edinburgh Rd North, Guelph, ON N1H 1E5  
P. (519) 822-2960 | F. (519) 822-0715  
[sales@hammfg.com](mailto:sales@hammfg.com)

Les Fabrications Hammond (Quebec) Inc.  
985 Rue Bergar, Laval, QC H7L 4Z6  
P. (514) 343-9010 | F. (514) 343-9941  
[sales@hammfg.com](mailto:sales@hammfg.com)

## USA

Hammond Manufacturing Company Inc.  
475 Cayuga Road, Cheektowaga, NY 14225  
P. (716) 630-7030 | F. (716) 630-7042  
[sales@hammfg.com](mailto:sales@hammfg.com)

## UNITED KINGDOM

Hammond Electronics Limited  
1 Onslow Close Kingsland Business Park  
Basingstoke, Hampshire, RG24 8QL  
P. +44 1256 812812 | F. +44 1256 332249  
[sales@hammond-electronics.co.uk](mailto:sales@hammond-electronics.co.uk)

## AUSTRALIA

Hammond Electronics Pty. Limited  
11-13 Port Rd Queenstown, SA 5014  
P. +61 8 8240 2244 | F. +61 8 8240 2255  
[australia@hammfg.com](mailto:australia@hammfg.com)

## ASIA

Hammond Electronics Asia Inc.  
10F, 79 Sec. 1, Kuang Fu Road  
San Chung City, Taipei, 24158 Taiwan R.O.C.  
P. +886-2-2999-8918 | F. +886-2-2999-8955  
[asia@hammondmfg.com](mailto:asia@hammondmfg.com)

