

Channel Drains • Catch Basins • Grates • Valve Boxes



**The calm
after the storm.**



Industry Load Classifications



CLASS A

- Loads of 1 - 60 psi.
- Recommended for pedestrian, bicycles and wheel chair traffic.

CLASS C

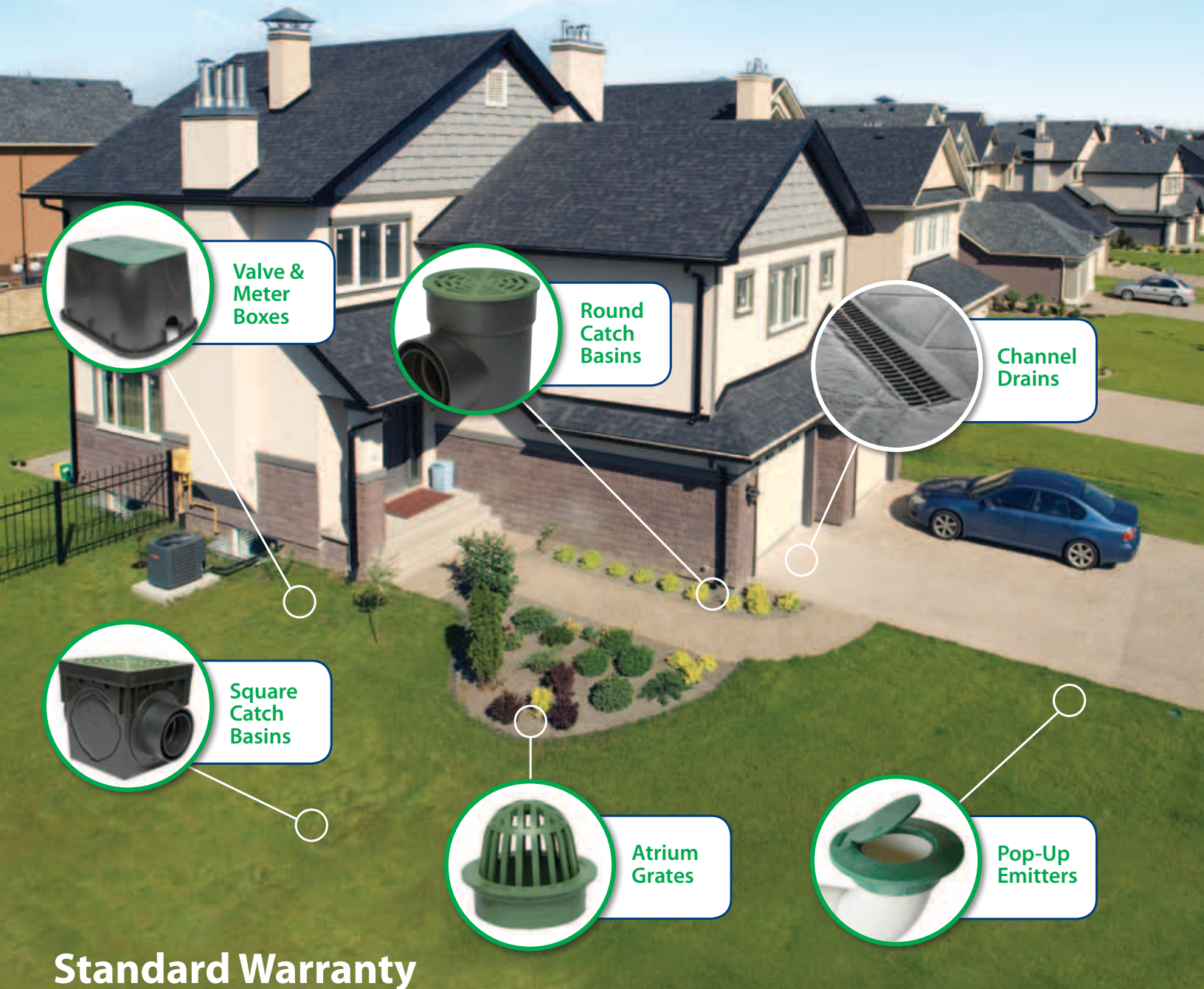
- Loads of 176 - 325 psi.
- Recommended for heavy-duty pneumatic tire forklifts and tractor trailers at speeds less than 20 mph, H-20 rated.

CLASS B

- Loads of 61 - 175 psi.
- Recommended for medium-duty pneumatic tire traffic, autos and light trucks at speeds less than 20 mph.

CLASS D

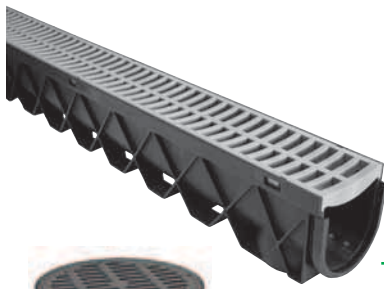
- Loads of 326 - 575 psi.
- Recommended for heavy-duty hard tire forklifts at speeds less than 20 mph, H-20 rated.



Standard Warranty

Fernco, Inc. ("Sellers") warrants to the original Buyer only, that all products shall be free from defects in design and manufacture for a period of one year from the date of delivery, provided that such products are installed, used and/or adjusted only in strict accordance with the appropriate guidelines. Visit: www.StormDrainWMS.com for complete details.

DRAINAGE



• **Channel Drainage & Accessories** 4-5



• **Distribution Boxes - 12" and 20"** 6-7
Including grates, risers and accessories



• **Drain Basins - Square - 9" and 12"** 8-9
Including grates, debris traps and accessories



• **Drain Basins - Round - 6"** 10-11
Including grates and debris traps



• **Drain Basins - Round - 9" and 12"** 12-13
Including grates and debris traps



• **Drain Grates - Direct-To-Pipe** 14



• **Atrium Grates - Direct-To-Pipe** 15

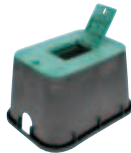


• **Pop-Up Emitters - with Elbow** 15

VALVE BOXES



• **Valve Boxes - Round** 16



• **Meter Boxes - Rectangular** 16



• **Valve Boxes - Rectangular** 17

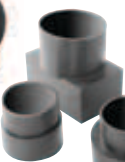


• **Valve Box Risers - Rectangular** 17

FLEXIBLE CONNECTORS



• **Corrugated Pipe Couplings - 1070 Series** 18



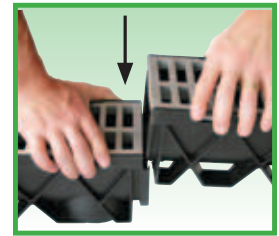
• **Downspout Connectors** 19



Strength By Design

Designed to withstand automotive vehicle weight without moving in concrete.

Meets Load Rating B (See page 1)

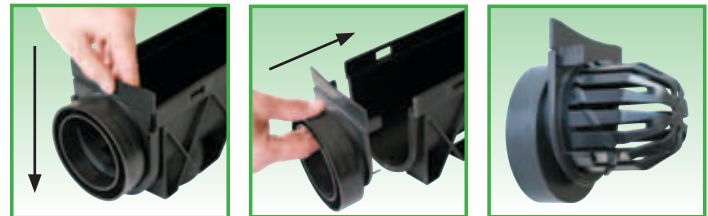


Bottom outlet in every Channel.



- Built in bottom outlet in each Channel is easily cut out with a utility knife and accommodates 4" sewer and drain pipes. The leaf guard also easily fits into the bottom outlet.

Simple accessory attachment.



- The Storm Drain 90° Corner, End Cap and End Outlet just slide into the female end of the Channels. They also each have tabs to fit into the male end of the Channels or the cut to length end of the Channels.

No clips or screws required to assemble.

Channel Drains



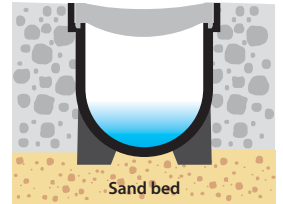
APPLICATIONS

The durability & high performance of the Fernco Storm Drain ensures a long lasting, permanent solution to the collection and dispersal of standing surface water. The easy installation is ideal for driveways, pools, patios, walkways, sports courts and more.



FEATURES

- Made from 100% recycled polypropylene
- Bottom outlet accommodates 4" S&D pipe
- No clips or screws required to assemble



Backfill with concrete.

Channel Drain - Meets Load Rating B (See page 1)

| Part No. | Color | Descriptions | Dimensions (inches) L x W x H | UPC | Weight Each Lbs. | Carton QTY |
|----------|-------|---|----------------------------------|-----------------|---------------------|---------------|
| FSD-CHGG | Black | 39.5" Channel Drain with Grey Grate | 39.75 x 5 x 5.25 | 0 18578 00777 2 | 4.77 | 9 |
| FSD-GP3G | Black | Contractor Pack: 3 Pieces of Channel with Grey Grate, 1 End Cap, 1 End Outlet | 39.75 x 4.75 x 15.75 | 0 18578 00783 3 | 15.69 | 3 |

90° Corner

FSD-90CGG



90° Corner allows left or right hand extension of the Storm Drain Channel

End Cap

FSD-EC



End Caps just slide into Storm Drain Channel

Leaf Guard

FSD-LG



Leaf Guard prevents debris from going down drain pipe

End Outlet

FSD-EO



End Outlet accommodates 3" & 4" Sewer & Drain pipe OR 3" & 4" Sch. 40 fitting hub

Channel Drain Accessories

| Part No. | Color | Descriptions | Dimensions (inches) L x W x H | UPC | Weight Each Lbs. | Carton QTY |
|-----------|-------|------------------------------|----------------------------------|-----------------|---------------------|---------------|
| FSD-90CGG | Black | 90° Corner with Grey Grate | 6.63 x 6.63 x 5 | 0 18578 00778 9 | 0.90 | 4 |
| FSD-EC | Black | End Cap for Channel Drain | 4.75 x 5 x 1 | 0 18578 00779 6 | 0.11 | 10 |
| FSD-EO | Black | End Outlet for Channel Drain | 4.75 x 5 x 2.5 | 0 18578 00780 2 | 0.20 | 10 |
| FSD-LG | Black | Leaf Guard for Channel Drain | 3.5 x 3.5 x 3.5 | 0 18578 00781 9 | 0.10 | 10 |

FEATURES

The most versatile box on the market today. Choose from 5 heights to set your inlets and outlets on each side. It also comes complete with the only seal on the market that accepts 2", 3", 4" smooth wall and corrugated pipe. No more different fittings to inventory! The 12" D-Box comes with stabilizing feet to anchor the box.

APPLICATIONS:

- Use as Rain Drain, D-Box, or Drop Box; allows for all configurations
- Use as a rain drain for gutters, driveways & sub surface drainage
- Use as a distribution box or drop box for onsite septic systems
- Use with the riser to bring cover or grate to grade as needed
- Accepts 2", 3", 4" Sch. 40, S&D, triple wall and corrugated pipe
- Four stabilizing feet with every 12" D-Box



12" D-Box

5 different inlet/outlet positions per side.



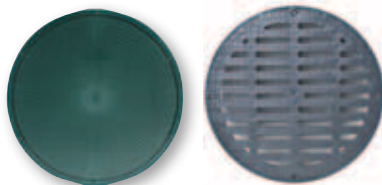
Unique D-Box Pipe Seals

The only true watertight seals on the market today. Our 4" seal fits in both our 12" and 20" plastic D-Box. It accepts 2", 3", 4" Sch. 40, S&D and corrugated pipe.



Distribution Box Riser

We have combined all the best features of concrete and plastic risers to create our patented riser system. Our risers hold their shape, are stackable, screw together, and are water and airtight. Structural ribs inside prevent frost from adhering to the riser in frost prone areas.



Solid Cover or Grate Top Available



20" 8 Hole D-Box

10 different inlet/outlet positions per side. This box is great for large applications such as golf courses but is also a suitable size for the home. Accepts 2", 3" and 4" pipe.

Boxes

| Part No. | Color | Descriptions | Dimensions (inches) L x W x H | UPC | Weight Each Lbs. | Carton QTY |
|---------------|-------|--------------------------------|----------------------------------|-----------------|---------------------|---------------|
| FSD-3017-HB | Black | 12" Round D-Box W/Feet & Seals | 14.2 x 14.2 x 15.5 | 0 185780 1347 6 | 3.55 | 4 |
| FSD-3017-20HB | Black | 20" Round 8 Hole D-Box W/Seals | 22.9 x 22.9 x 16.4 | 0 185780 1348 3 | 6.60 | 4 |

Distribution Box KIT - Includes Box, Grate or Lid and Seals

| Part No. | Color | Descriptions | Dimensions (inches) L x W x H | UPC | Weight Each Lbs. | Carton QTY |
|-----------------|-------|--|----------------------------------|-----------------|---------------------|---------------|
| FSD-3017-12BKIT | Black | Kit/12" Round D-box W/Grate,Feet & Seals | 14.2 x 14.2 x 15.5 | 0 185780 1353 7 | 5.20 | 1 |
| FSD-3017-20BKIT | Black | Kit/20" Round 8 Hole D-Box W/Grate & Seals | 22.9 x 22.9 x 16.4 | 0 185780 1354 4 | 11.05 | 1 |
| FSD-3017-12SKIT | Black | Kit/12" Round D-Box W/Lid,Feet & Seals | 14.2 x 14.2 x 15.5 | 0 185780 1355 1 | 4.90 | 1 |
| FSD-3017-20SKIT | Black | Kit/20" Round 8 Hole D-Box W/Lid & Seals | 22.9 x 22.9 x 16.4 | 0 185780 1356 8 | 10.60 | 1 |

Distribution Box Seals and Nuts

| Part No. | Color | Descriptions | Dimensions (inches) L x W x H | UPC | Weight Each Lbs. | Carton QTY |
|----------|-------|---------------------------------|----------------------------------|-----------------|---------------------|---------------|
| FSD-3001 | Black | 2", 3" or 4" D-Box Seal and Nut | 5.7 x 5.7 x 1.4 | 0 185780 1359 9 | 0.10 | 20 |

Catch Basin / Box Risers

| Part No. | Color | Descriptions | Dimensions (inches) L x W x H | UPC | Weight Each Lbs. | Carton QTY |
|------------|-------|------------------------|----------------------------------|-----------------|---------------------|---------------|
| FSD-3017-R | Green | 6" Riser for 12" D-Box | 14.6 x 14.6 x 7.3 | 0 185780 1357 5 | 2.30 | 4 |
| FSD-3009 | Green | 6" Riser for 20" D-Box | 22.8 x 22.8 x 7.3 | 0 185780 1358 2 | 4.00 | 4 |

Box Grates & Lids - Meets Load Rating B (See page 1)

| Part No. | Color | Descriptions | Dimensions (inches) L x W x H | Open Surface Area (Sq. In.) | UPC | Weight Each Lbs. | Carton QTY |
|-------------------|-------|------------------------|----------------------------------|--------------------------------|-----------------|---------------------|---------------|
| GRATES | | | | | | | |
| FSD-3017-GEB | Black | 12" Round / Flat Grate | 13.8 x 13.8 x 1.5 | 45.85 | 0 185780 1349 0 | 1.65 | 4 |
| FSD-3017-G20B | Black | 20" Round / Flat Grate | 22 x 22 x 2 | 134 | 0 185780 1350 6 | 4.45 | 4 |
| SOLID LIDS | | | | | | | |
| FSD-3017-CB | Green | 12" Round / Solid Lid | 13.8 x 13.8 x 1.5 | N/A | 0 185780 1351 3 | 1.35 | 4 |
| FSD-3017-C20 | Green | 20" Round / Solid Lid | 22 x 22 x 2 | N/A | 0 185780 1370 4 | 5.08 | 4 |

Catch Basins

9" and 12" SQUARE

APPLICATIONS

Use to collect medium-volume water flows from wet areas in yards, lawns, fairways and sports fields. Can also be used in patios, garages and driveways.

FEATURES

- Square catch basin with two open side outlets
- Two additional side knock-outs and one bottom knock-out for a total of five possible outlets
- Strong and durable flat grates are Class B rated and available in green or black

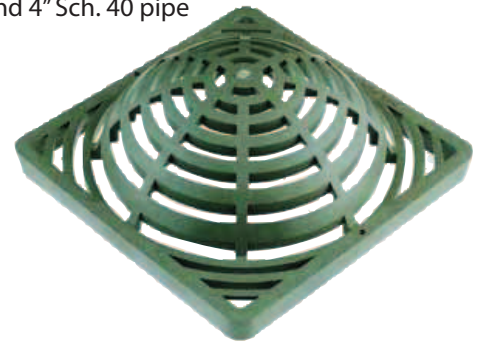
USE WITH UNIVERSAL ADAPTER FOR:

- 3" and 4" Sewer & Drain pipe or hub
- 3" and 4" corrugated pipe
- 3" and 4" triple wall pipe
- 3" and 4" Sch. 40 pipe



Square Catch Basin KIT

Includes: Catch Basin, Black Grate, 2 Universal Adapters, and Debris Trap.



Flat and Atrium Grates - in Black or Green

Made of durable polyethylene with UV inhibitors to reduce sun damage.



Universal Basin Adapter

Provides the flexibility to put the basin outlet on the side it is needed. Accepts 3" and 4" S&D pipe or hub, corrugated, triple wall and Sch. 40 pipe.



Universal Plug

Seals any open basin outlets that are not needed.



Debris Trap

A unique solution to a common drain problem. Catches debris and silt and reduces the risk of pipe clogging. Lifts out for easy cleaning.

Square Catch Basin

| Part No. | Color | Descriptions | Dimensions (inches) L x W x H | UPC | Weight Each Lbs. | Carton QTY |
|--------------|-------|-----------------------------------|----------------------------------|-----------------|---------------------|---------------|
| FSD-090-CB-2 | Black | 9" Square Basin / 4 Side Outlets | 9.5 x 9.5 x 10 | 0 185780 1287 5 | 2.50 | 4 |
| FSD-120-CB-2 | Black | 12" Square Basin / 4 Side Outlets | 12.25 x 12.25 x 13 | 0 185780 1288 2 | 4.36 | 4 |

Square Catch Basin KIT - Complete with flat grate, Debris Trap & 2 adapters

Meets Load Rating B (See page 1)

| Part No. | Color | Descriptions | Dimensions (inches) L x W x H | UPC | Weight Each Lbs. | Carton QTY |
|-----------|-------|---------------------------------|----------------------------------|-----------------|---------------------|---------------|
| FSD-094-K | Black | 9" Square / Complete Basin Kit | 9.5 x 9.5 x 10 | 0 185780 1376 6 | 5.47 | 1 |
| FSD-124-K | Black | 12" Square / Complete Basin Kit | 12.25 x 12.25 x 13 | 0 185780 1377 3 | 8.53 | 1 |

Square Catch Basin Grates

| Part No. | Color | Descriptions | Dimensions (inches) L x W x H | Open Surface Area (Sq. In.) | UPC | Weight Each Lbs. | Carton QTY |
|---|-------|---------------------------|----------------------------------|--------------------------------|-----------------|---------------------|---------------|
| SQUARE FLAT - Meets Load Rating B (See page 1) | | | | | | | |
| FSD-094-SF | Black | 9" Square / Flat Grate | 9 x 9 x 1.25 | 28.5 | 0 185780 1289 9 | 1.43 | 10 |
| FSD-090-SF | Green | 9" Square / Flat Grate | 9 x 9 x 1.25 | 28.5 | 0 185780 1290 5 | 1.43 | 10 |
| FSD-124-SF | Black | 12" Square / Flat Grate | 11.75 x 11.75 x 1.13 | 33.9 | 0 185780 1293 6 | 2.31 | 10 |
| FSD-120-SF | Green | 12" Square / Flat Grate | 11.75 x 11.75 x 1.13 | 33.9 | 0 185780 1294 3 | 2.31 | 10 |
| SQUARE ATRIUM | | | | | | | |
| FSD-090-A | Green | 9" Square / Atrium Grate | 9 x 9 x 3 | 28.3 | 0 185780 1291 2 | 1.22 | 10 |
| FSD-094-A | Black | 9" Square / Atrium Grate | 9 x 9 x 3 | 28.3 | 0 185780 1292 9 | 1.22 | 10 |
| FSD-120-A | Green | 12" Square / Atrium Grate | 12 x 12 x 4 | 61.4 | 0 185780 1295 0 | 1.75 | 10 |
| FSD-124-A | Black | 12" Square / Atrium Grate | 12 x 12 x 4 | 61.4 | 0 185780 1296 7 | 1.75 | 10 |

Adapters & Plugs

| Part No. | Color | Descriptions | Dimensions (inches) L x W x H | UPC | Weight Each Lbs. | Carton QTY |
|-------------|-------|-------------------------------|----------------------------------|-----------------|---------------------|---------------|
| FSD-UA-001 | Black | Universal Catch Basin Adapter | 7 x 7 x 3 | 0 185780 1331 5 | 0.55 | 20 |
| FSD-UA-Plug | Black | Universal Catch Basin Plug | 7 x 7 x .75 | 0 185780 1332 2 | 0.24 | 20 |

Square Debris Traps

| Part No. | Color | Descriptions | Dimensions (inches) L x W x H | UPC | Weight Each Lbs. | Carton QTY |
|------------|-------|------------------------|----------------------------------|-----------------|---------------------|---------------|
| FSD-090-ST | Black | 9" Square Debris Trap | 8.25 x 8.25 x 1.5 | 0 185780 1297 4 | 0.47 | 20 |
| FSD-120-ST | Black | 12" Square Debris Trap | 10.25 x 10.25 x 1.38 | 0 185780 1298 1 | 0.78 | 20 |

APPLICATIONS

Use to collect low-volume water flows from wet areas in yards, lawns, fairways and sports fields. Can also be used in patios, garages and drive-ways.

FEATURES

- Cost saving built-in universal outlet
- Stackable for easy storage

UNIVERSAL OUTLET FOR:

- 3" and 4" sewer and drain pipe or hub
- 3" and 4" corrugated pipe
- 3" and 4" triple wall pipe
- 3" and 4" Sch. 40 pipe



Square Top and Atrium Grates Available

Made of durable polyethylene with UV inhibitors to reduce sun damage.



Single Universal Side Outlet

Made of durable polyethylene with cost saving universal outlet.



Universal Bottom Outlet

Made of durable polyethylene with cost saving universal outlet. Stackable for easy storage.



Debris Trap

A unique solution to a common drain problem. Catches debris and silt and reduces the risk of pipe clogging. Lifts out for easy cleaning.

6" Round Catch Basins

| Part No. | Color | Descriptions | Dimensions (inches) L x W x H | UPC | Weight Each Lbs. | Carton QTY |
|--------------|-------|--|----------------------------------|-----------------|---------------------|---------------|
| FSD-060-CB | Black | 6" Round Basin / Bottom Outlet | 6.5 x 6.5 x 6.25 | 0 185780 1301 8 | 0.94 | 20 |
| FSD-060-CB-1 | Black | 6" Round Basin / 3" & 4" Single Outlet | 8.25 x 6.5 x 8.5 | 0 185780 1302 5 | 1.23 | 10 |
| FSD-060-CB-2 | Black | 6" Round Basin / 3" & 4" Double Outlet | 9.75 x 6.5 x 8.5 | 0 185780 1303 2 | 1.44 | 10 |

6" Round Catch Basin Grates

| Part No. | Color | Descriptions | Dimensions (inches) L x W x H | Open Surface Area (Sq. In.) | UPC | Weight Each Lbs. | Carton QTY |
|--|-------|-------------------------|----------------------------------|--------------------------------|-----------------|---------------------|---------------|
| ROUND TOP - Meets Load Rating B (See page 1) | | | | | | | |
| FSD-064-R | Black | 6" Round Grate | 7 x 7 x 2 | 7.4 | 0 185780 1322 3 | 0.55 | 10 |
| FSD-060-R | Green | 6" Round Grate | 7 x 7 x 2 | 7.4 | 0 185780 1323 0 | 0.55 | 10 |
| SQUARE TOP - Meets Load Rating B (See page 1) | | | | | | | |
| FSD-064-S | Black | 6" Square Grate | 6 x 6 x 2 | 4.1 | 0 185780 1314 8 | 0.45 | 10 |
| ROUND ATRIUM | | | | | | | |
| FSD-064-A | Black | 6" Round / Atrium Grate | 6.75 x 6.75 x 5 | 15.0 | 0 185780 1328 5 | 0.60 | 40 |

6" Round Debris Trap

| Part No. | Color | Descriptions | Dimensions (inches) L x W x H | UPC | Weight Each Lbs. | Carton QTY |
|------------|-------|----------------------|----------------------------------|-----------------|---------------------|---------------|
| FSD-060-ST | Black | 6" Round Debris Trap | 6 x 6 x 1.75 | 0 185780 1310 0 | 0.17 | 20 |

APPLICATIONS

Use to collect low-volume water flows from wet areas in yards, lawns, fairways and sports fields. Can also be used in patios, garages and drive-ways.

FEATURES

- Cost saving built-in universal outlet
- Stackable for easy storage

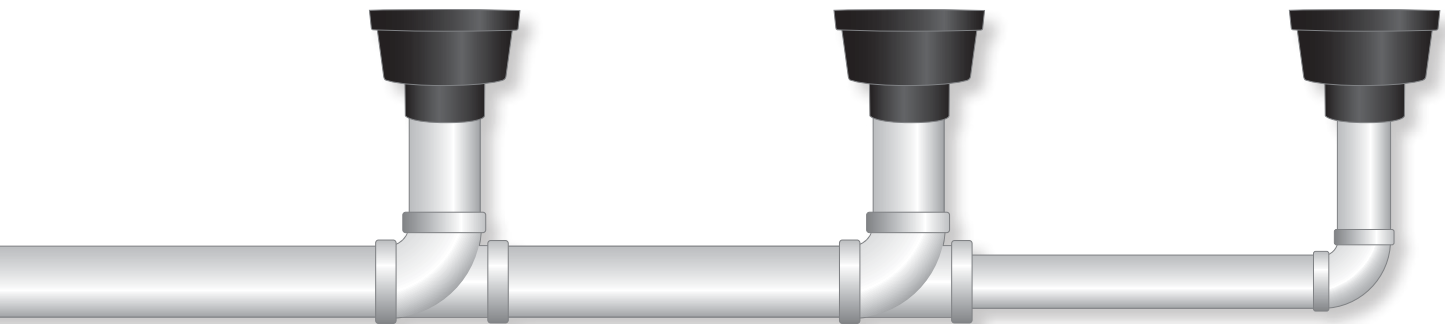
UNIVERSAL OUTLET FOR:

- 3" and 4" sewer and drain pipe or hub
- 3" and 4" corrugated pipe
- 3" and 4" triple wall pipe
- 3" and 4" Sch. 40 pipe



Debris Trap

A unique solution to a common drain problem. Catches debris and silt and reduces the risk of pipe clogging. Lifts out for easy cleaning.



9" and 12" Round Catch Basins

| Part No. | Color | Descriptions | Dimensions (inches) L x W x H | UPC | Weight Each Lbs. | Carton QTY |
|-------------|-------|---------------------------------|----------------------------------|-----------------|---------------------|---------------|
| FSD-090-RCB | Black | 9" Round Basin / Bottom Outlet | 9.5 x 9.5 x 7 | 0 185780 1304 9 | 1.50 | 10 |
| FSD-120-RCB | Black | 12" Round Basin / Bottom Outlet | 12.5 x 12.5 x 7 | 0 185780 1305 6 | 1.94 | 10 |

9" and 12" Round Catch Basin Grates - Meets Load Rating B (See page 1)

| Part No. | Color | Descriptions | Dimensions (inches) L x W x H | Open Surface Area (Sq. In.) | UPC | Weight Each Lbs. | Carton QTY |
|-------------|-------|------------------------|----------------------------------|--------------------------------|-----------------|---------------------|---------------|
| FSD-094X-RF | Black | 9" Round / Flat Grate | 9 x 9 x 1 | 23.5 | 0 185780 1306 3 | 1.11 | 10 |
| FSD-090X-RF | Green | 9" Round / Flat Grate | 9 x 9 x 1 | 23.5 | 0 185780 1307 0 | 1.11 | 10 |
| FSD-124X-RF | Black | 12" Round / Flat Grate | 12 x 12 x 1 | 43.6 | 0 185780 1308 7 | 2.07 | 10 |
| FSD-120X-RF | Green | 12" Round / Flat Grate | 12 x 12 x 1 | 43.6 | 0 185780 1309 4 | 2.07 | 10 |

9" and 12" Round Debris Trap

| Part No. | Color | Descriptions | Dimensions (inches) L x W x H | UPC | Weight Each Lbs. | Carton QTY |
|-------------|-------|-----------------------|----------------------------------|-----------------|---------------------|---------------|
| FSD-090-RST | Black | 9" Round Debris Trap | 8.25 x 8.25 x 2.5 | 0 185780 1311 7 | 0.41 | 20 |
| FSD-120-RST | Black | 12" Round Debris Trap | 11.25 x 11.25 x 2.5 | 0 185780 1312 4 | 0.65 | 20 |

Drain Grates

Direct to Pipe or Fitting

APPLICATIONS

For use with drain pipe and pipe fittings in areas not needing a drain basin or space restricts the use of a drain basin.

FEATURES

- Durable polyethylene with UV inhibitors to reduce sun damage



FSD-090-S



FSD-084-R



FSD-060-R

USE WITH

| Part No. | S&D Hub | S&D Pipe | Corru- gated Pipe | Triple Wall Pipe | Sch. 40 | Round Catch Basin |
|-----------|---------|----------|-------------------------|------------------------|------------|-------------------------|
| FSD-054-S | 3" & 4" | 4" | 3" & 4" | 4" | 3" & 4" | |
| FSD-064-S | 3" & 4" | 4" | 3" & 4" | 4" | 3" & 4" | |
| FSD-094-S | 6" | 6" | 6" | | 6" | 6" |
| FSD-090-S | 6" | 6" | 6" | | 6" | 6" |
| FSD-034-R | 3" | 3" | 3" | 3" | 3" | |
| FSD-030-R | 3" | 3" | 3" | 3" | 3" | |
| FSD-044-R | 3" & 4" | 4" | 3" & 4" | 4" | 3" & 4" | |
| FSD-040-R | 3" & 4" | 4" | 3" & 4" | 4" | 3" & 4" | |
| FSD-064-R | 6" | 6" | 6" | | 6" | 6" |
| FSD-060-R | 6" | 6" | 6" | | 6" | 6" |
| FSD-084-R | 6" | 6" | 6" | | 6" | 6" |
| FSD-080-R | 6" | 6" | 6" | | 6" | 6" |

Bottom Outlet Grates - Meet Load Rating B (See page 1)

| Part No. | Color | Descriptions | Dimensions (inches) L x W x H | Open Surface Area (Sq. In.) | UPC | Weight Each Lbs. | Carton QTY |
|-------------------|-------|-----------------|----------------------------------|--------------------------------|-----------------|---------------------|---------------|
| SQUARE TOP | | | | | | | |
| FSD-054-S | Black | 5" Square Grate | 4.75 x 4.75 x 1.75 | 4.1 | 0 185780 1313 1 | 0.24 | 20 |
| FSD-064-S | Black | 6" Square Grate | 6 x 6 x 2 | 4.1 | 0 185780 1314 8 | 0.45 | 10 |
| FSD-094-S | Black | 9" Square Grate | 9 x 9 x 2.25 | 10.4 | 0 185780 1315 5 | 1.14 | 10 |
| FSD-090-S | Green | 9" Square Grate | 9 x 9 x 2.25 | 10.4 | 0 185780 1316 2 | 1.14 | 10 |
| ROUND TOP | | | | | | | |
| FSD-034-R | Black | 3" Round Grate | 3.75 x 3.75 x 1.5 | 3.0 | 0 185780 1318 6 | 0.13 | 40 |
| FSD-030-R | Green | 3" Round Grate | 3.75 x 3.75 x 1.5 | 3.0 | 0 185780 1319 3 | 0.13 | 40 |
| FSD-044-R | Black | 4" Round Grate | 4.75 x 4.75 x 1.5 | 4.1 | 0 185780 1320 9 | 0.19 | 40 |
| FSD-040-R | Green | 4" Round Grate | 4.75 x 4.75 x 1.5 | 4.1 | 0 185780 1321 6 | 0.19 | 40 |
| FSD-064-R | Black | 6" Round Grate | 7 x 7 x 2 | 7.4 | 0 185780 1322 3 | 0.55 | 10 |
| FSD-060-R | Green | 6" Round Grate | 7 x 7 x 2 | 7.4 | 0 185780 1323 0 | 0.55 | 10 |
| FSD-084-R | Black | 8" Round Grate | 7.75 x 7.75 x 2.13 | 8.3 | 0 185780 1324 7 | 0.65 | 10 |
| FSD-080-R | Green | 8" Round Grate | 7.75 x 7.75 x 2.13 | 8.3 | 0 185780 1325 4 | 0.65 | 10 |



APPLICATIONS

For use in areas where floating debris would block a standard flat grate.

FEATURES

- Durable polyethylene with UV inhibitors to reduce sun damage

USE WITH

| Part No. | S&D Hub | S&D Pipe | Corru- gated Pipe | Triple Wall Pipe | Sch. 40 | Round Catch Basin |
|-----------|---------|----------|-------------------------|------------------------|------------|-------------------------|
| FSD-030-A | 3" | 3" | 3" | 3" | 3" | |
| FSD-040-A | 3" & 4" | 4" | 3" & 4" | 4" | 3" & 4" | |
| FSD-064-A | 6" | 6" | 6" | | 6" | 6" |

Round Atrium Grates

| Part No. | Color | Descriptions | Dimensions (inches) L x W x H | Open Surface Area (Sq. In.) | UPC | Weight Each Lbs. | Carton QTY |
|-----------|-------|-------------------------|----------------------------------|--------------------------------|-----------------|---------------------|---------------|
| FSD-030-A | Green | 3" Round / Atrium Grate | 3.63 x 3.63 x 3.75 | 6.8 | 0 185780 1326 1 | 0.15 | 40 |
| FSD-040-A | Green | 4" Round / Atrium Grate | 4.75 x 4.75 x 4 | 11.2 | 0 185780 1327 8 | 0.22 | 40 |
| FSD-064-A | Black | 6" Round / Atrium Grate | 6.75 x 6.75 x 5 | 15.0 | 0 185780 1328 5 | 0.60 | 40 |



APPLICATIONS

For use in areas where space restricts the use of a full size drain basin.

FEATURES

- Removeable Grate
- Durable polyethylene construction
- UV inhibitors to reduce sun damage

USE WITH

- 3" and 4" sewer and drain pipe
- 3" and 4" corrugated pipe
- 3" and 4" triple wall pipe
- 4" Sch. 40 pipe

Square Grate with Adapter Basin - Meets Load Rating A (See page 1)

| Part No. | Color | Descriptions | Dimensions (inches) L x W x H | Open Surface Area (Sq. In.) | UPC | Weight Each Lbs. | Carton QTY |
|-------------|-------|---|----------------------------------|--------------------------------|-----------------|---------------------|---------------|
| FSD-044-SCB | Black | 6" Square / Bottom Outlet - Removeable Grate | 6.25 x 6.25 x 2.5 | 7.7 | 0 185780 1317 9 | 0.88 | 10 |



Pop-Up Emitters - Meets Load Rating A (See page 1)

| Part No. | Color | Descriptions | Dimensions (inches) L x W x H | Open Surface Area (Sq. In.) | UPC | Weight Each Lbs. | Carton QTY |
|------------|-------|----------------------------------|----------------------------------|--------------------------------|-----------------|---------------------|---------------|
| FSD-343-EL | Green | Pop-Up Emitter with 3" S&D Elbow | 6 x 6 x 7 | 7.8 | 0 185780 1329 2 | 0.60 | 25 |
| FSD-344-EL | Green | Pop-Up Emitter with 4" S&D Elbow | 6 x 6 x 6.5 | 7.8 | 0 185780 1330 8 | 0.80 | 20 |

Valve Boxes



APPLICATIONS

Use to cover, protect and provide access to irrigation controls, telephone, electrical or low voltage landscape lighting junctions.

FEATURES

- Lids snap on for easy access or screw on for added security
- Available in 3 colors
- Durable polyethylene construction
- UV inhibitors to reduce sun damage



Round Valve Boxes with Lids - Meets Load Rating A (ANSI/SCTE light duty, pedestrian - See page 1)

| Part No. | Color | Descriptions | Dimensions (inches) D1 x D2 x H | UPC | Weight Each Lbs. | Carton QTY |
|----------|--------|---------------------------|------------------------------------|-----------------|---------------------|---------------|
| FSD-60 | Green | 6" Round Box & Lid Combo | 8.25 x 8.25 x 9.25 | 0 185780 1333 9 | 1.07 | 6 |
| FSD-63 | Purple | 6" Round Box & Lid Combo | 8.25 x 8.25 x 9.25 | 0 185780 1334 6 | 1.07 | 6 |
| FSD-62 | Tan | 6" Round Box & Lid Combo | 8.25 x 8.25 x 9.25 | 0 185780 1335 3 | 1.07 | 6 |
| FSD-100 | Green | 10" Round Box & Lid Combo | 13 x 13 x 10.25 | 0 185780 1336 0 | 3.18 | 6 |
| FSD-103 | Purple | 10" Round Box & Lid Combo | 13 x 13 x 10.25 | 0 185780 1337 7 | 3.18 | 6 |
| FSD-102 | Tan | 10" Round Box & Lid Combo | 13 x 13 x 10.25 | 0 185780 1338 4 | 3.18 | 6 |



APPLICATIONS

Small, easy-access door in lid for viewing of meter. Use to cover, protect and provide access to irrigation controls, telephone, electrical or low voltage landscape lighting junctions.

FEATURES

- Lids snap on for easy access or screw on for added security
- Durable polyethylene construction
- UV inhibitors to reduce sun damage

Meter Box - Meets Load Rating A (ANSI/SCTE light duty, pedestrian - See page 1)

| Part No. | Color | Descriptions | Dimensions (inches) L x W x H | UPC | Weight Each Lbs. | Carton QTY |
|------------|-------|---------------------------------|----------------------------------|-----------------|---------------------|---------------|
| FSD-120-MR | Green | 12" x 17" Meter Box & Lid Combo | 21 x 15.5 x 12.38 | 0 185780 1346 9 | 9.66 | 6 |



APPLICATIONS

Use to cover, protect and provide access to irrigation controls, telephone, electrical or low voltage landscape lighting junctions.

FEATURES

- Lids snap on for easy access or screw on for added security
- Available in 3 colors
- Durable polyethylene construction
- UV inhibitors to reduce sun damage

Rectangular Valve Boxes with Lids - Meets Load Rating A (ANSI/SCTE light duty, pedestrian - See page 1)

| Part No. | Color | Descriptions | Dimensions (inches) L x W x H | UPC | Weight Each Lbs. | Carton QTY |
|-----------------|--------|------------------------------------|----------------------------------|-----------------|---------------------|---------------|
| 6" DEEP | | | | | | |
| FSD-120-6 | Green | 6" Deep - 12"x17" Box & Lid Combo | 19.25 x 14 x 7.25 | 0 185780 1342 1 | 6.38 | 6 |
| FSD-123-6 | Purple | 6" Deep - 12"x17" Box & Lid Combo | 19.25 x 14 x 7.25 | 0 185780 1343 8 | 6.38 | 6 |
| FSD-122-6 | Tan | 6" Deep - 12"x17" Box & Lid Combo | 19.25 x 14 x 7.25 | 0 185780 1344 5 | 6.38 | 6 |
| 12" DEEP | | | | | | |
| FSD-120 | Green | 12" Deep - 12"x17" Box & Lid Combo | 21 x 15.5 x 12.38 | 0 185780 1339 1 | 9.00 | 6 |
| FSD-123 | Purple | 12" Deep - 12"x17" Box & Lid Combo | 21 x 15.5 x 12.38 | 0 185780 1340 7 | 9.00 | 6 |
| FSD-122 | Tan | 12" Deep - 12"x17" Box & Lid Combo | 21 x 15.5 x 12.38 | 0 185780 1341 4 | 9.00 | 6 |



APPLICATIONS

Use to add height to rectangular valve boxes for deeper installations of irrigation controls, telephone, electrical or low voltage landscape lighting junctions.

**Riser only - lid not included*

FEATURES

- Durable polyethylene construction
- UV inhibitors to reduce sun damage



Valve Box Riser - Meets Load Rating A (ANSI/SCTE light duty, pedestrian - See page 1)

| Part No. | Color | Descriptions | Dimensions (inches) L x W x H | UPC | Weight Each Lbs. | Carton QTY |
|------------|-------|-----------------------------|----------------------------------|-----------------|---------------------|---------------|
| FSD-B124-X | Black | 6" Deep - 12"x17" Box Riser | 19 x 14 x 6.75 | 0 185780 1345 2 | 4.01 | 6 |

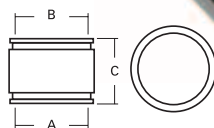


APPLICATIONS

Connects drainage/irrigation system tubing to PVC sewer piping quickly and easily. Ideal for use in storm and sub-soil drainage systems, farm irrigation, golf courses and residential areas. Use anywhere corrugated polyethylene systems are connected to plastic pipe.

FEATURES

- 300 series stainless steel band clamps
- Made of tough elastomeric PVC
- Resistant to chemicals, ultraviolet rays and fungus growth



1070 Series Couplings

| Part No. | Color | Descriptions | Dimensions - Inches | | | UPC | Weight Each Lbs. | Carton QTY |
|----------|-------|-------------------------|---------------------|------|------|-----|------------------|------------|
| | | | A | B | C | | | |
| *1070-32 | Black | 3" corrugated to 2" PVC | 3.57 | 2.38 | 3.96 | N/A | 1.08 | 20 |
| 1070-33 | Black | 3" corrugated to 3" PVC | 3.57 | 3.44 | 3.96 | N/A | 0.68 | 20 |
| *1070-42 | Black | 4" corrugated to 2" PVC | 4.76 | 2.38 | 3.94 | N/A | 1.66 | 20 |
| *1070-43 | Black | 4" corrugated to 3" PVC | 4.76 | 3.38 | 3.94 | N/A | 1.39 | 25 |
| 1070-44 | Black | 4" corrugated to 4" PVC | 4.76 | 4.29 | 3.94 | N/A | 0.87 | 20 |
| *1070-63 | Black | 6" corrugated to 3" PVC | 6.83 | 3.38 | 5.91 | N/A | 4.05 | 8 |
| *1070-64 | Black | 6" corrugated to 4" PVC | 6.83 | 4.38 | 5.91 | N/A | 3.49 | 8 |
| *1070-65 | Black | 6" corrugated to 5" PVC | 6.83 | 5.50 | 5.91 | N/A | 3.20 | 8 |
| 1070-66 | Black | 6" corrugated to 6" PVC | 6.83 | 6.50 | 5.91 | N/A | 2.43 | 10 |
| *1070-84 | Black | 8" corrugated to 4" PVC | 9.76 | 4.38 | 5.70 | N/A | 5.05 | 10 |
| *1070-86 | Black | 8" corrugated to 6" PVC | 9.76 | 6.38 | 5.70 | N/A | 5.05 | 10 |
| 1070-88 | Black | 8" corrugated to 8" PVC | 9.76 | 8.42 | 5.70 | N/A | 2.89 | 10 |

*Designated part numbers come with an insert bushing.



**UDSC-6C
6" Cap**

APPLICATIONS

The unique design of Fernco's Universal Downspout Connector allows for the easy connection of standard and non-standard downspouts to 6" sewer pipe and even allow for offset installations.

FEATURES

- Commercial or Residential
- NO shrinking, cracking or infiltration
- Rot and root proof, UV and Ozone resistant
- Allows offset applications with simple trace and cut installation



**UDSC-6P
6" Plug**

UDSC-6C 6" Cap

- Fits the OD of PVC and Cast Iron ONLY.
- For DWV pipe exposed above ground.
- For ANY downspout with a diagonal of 6" or less.

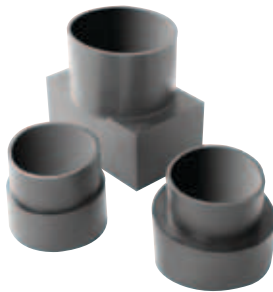


UDSC-6P 6" Plug

- Fits in ANY 6" ID sewer pipe.
- For DWV pipe cut off at grade level.
- For ANY downspout with a diagonal of 5.75" or less.

Universal Downspout Connectors

| Part No. | Color | Descriptions | Dimensions (inches) Diameter x H | UPC | Weight Each Lbs. | Carton QTY |
|----------|-------|-----------------------------|-------------------------------------|-----------------|---------------------|---------------|
| USDC-6C | Black | 6" Cap Downspout Connector | 6.75 x 1.75 | 0 185780 0772 7 | .55 | 12 |
| USDC-6P | Black | 6" Plug Downspout Connector | 6.03 x 2.25 | 0 185780 0771 0 | .55 | 12 |



APPLICATIONS

Fernco Flexible Downspout Connectors stretch easily over most common down-spouts and drain pipes to seal out problem-causing debris and pests.

FEATURES

- Fast and simple installation - no tools required
- Use with aluminum, steel or plastic downspouts and cast iron, spiral, corrugated or plastic drain pipe.

Flexible Downspout Connectors

| Part No. | Color | Drain Pipe Size | Downspout Size (Inches) | UPC | Weight Each Lbs. | Carton QTY |
|----------|-------|--------------------|---|-----------------|---------------------|---------------|
| DSC-33 | Black | 3" | 3" x 2" rectangular OR 3" round OR 2-1/2" square | 0 185780 0033 9 | .22 | 10 |
| DSC-43 | Black | 4" | | 0 185780 0034 6 | .26 | 20 |
| DSC-534 | Black | 4" | 5" x 3" rectangular | 0 185780 0851 9 | .55 | 25 |



www.StormDrainWMS.com

United States

300 S. Dayton Street
Davison, MI 48423
PH: (810) 653-9626
FX: (810) 653-8714

Canada

850 Phillip Street E.
Sarnia, Ontario N7V1Z6
PH: (519) 332-6711
FX: (519) 332-8610



www.fernco.com