

Features:

GTB20552

- | | |
|-------------------------------|----------|
| Combination | GTB20552 |
| <input type="checkbox"/> Bowl | GVP21552 |
| <input type="checkbox"/> Tank | GWS28590 |
- Vitreous china
 - Toilet-In-A-Box configuration
 - High Efficiency Toilet uses 1.28 gpf
 - 3" flush valve with Fluidmaster® 400A pilot valve for quiet fill
 - 12" Rough-in
 - ErgoHeight™ ADA Elongated bowl
 - Dual-fed siphon jets action bowl (no splashing)
 - 2" Fully Glazed trapway for effective waste removal
 - Color matched metal tank lever
 - 6 point tank to bowl connection for tank stability
 - Sanitary bead for easy cleaning
 - Color matched Bolt caps included
 - Soft-Closed Toilet seat included
 - Wax Ring included
 - Floor bolts included
- FINI
WAI



Technical Information:

Configuration	Two-piece, Round Front Toilet
Water per Flush	1.28 gpf (4.8 lpf)
Rough-In	12"
Height	28 ³ / ₄ "
Width	17 ¹ / ₂ "
Depth	27 ¹ / ₈ "
Trapway	2"
Large Water Surface	8 ¹¹ / ₁₆ " x 6 ⁵ / ₁₆ "
Shipping Weight	87.8 lbs

Accessories: (included)

- Toilet seat GC550129

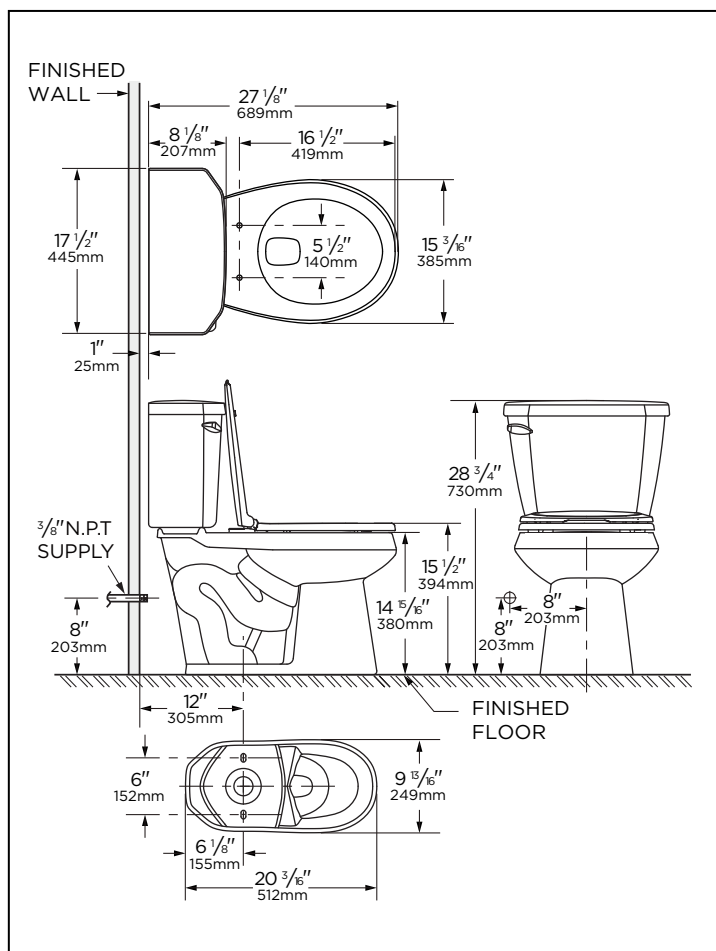
Other Tank Options: (bowl to be purchased separately)
N/A

Available Colors:

- White
- Other: Refer to Price Book for additional colors

Warranty:

- Limited Lifetime on Vitreous China, refer to the website for more details.



HIGH EFFICIENCY TOILET
HET



NOTES: All dimensions are in inches and millimeters. Illustrations may not be drawn to scale.

IMPORTANT:

Dimensions of fixtures are nominal and may vary within the range of tolerances established by ASME standard A 112.19.2. THIS FIXTURE QUALIFIES ACCORDING TO ASME TEST PROCEDURES AS A HIGH EFFICIENCY WATER CLOSET WITH AN AVERAGE CONSUMPTION OF 1.28 gpf (4.8 Lpf) OR LESS.