



RHODIUM : TROFFER/CENTER BASKET FIXTURE

DESCRIPTION

The Rhodium series is ideally suited for providing uniform illumination in offices, schools, hospitals, retailers and government buildings. As an esthetically pleasing replacement for traditional fluorescent systems, Rhodium fixtures provide up to 90% energy savings over the existing fixtures. Although they are specifically designed for installation in recessed-ceilings, they can also be installed in Xeleum's optional surface mount kits.

FEATURES

- Cool running LEDs and fixtures provide years of maintenance-free operation without ever having to change a bulb
- Utility rebates available in many areas
- More light where you want it
- Attractive modern designs
- No hazardous metals or chemicals
- Bright, glare free illumination
- Dust and insect resistant sealed design
- No flicker or strobing
- Easy installation

LISTINGS

- Complies with IESNA requirements
- ROHS Compliant
- BAA Compliant
- DesignLights Consortium® Qualified - meets DLC requirements for efficacy and lumen maintenance
- DesignLights Consortium® Premium Qualified (as noted) - meets the requirements for the highest DLC qualification for efficacy and lumen maintenance

PERFORMANCE

- Rated lifetime: L70 65,000 hours @ 58°C
- 3500K, 4000K, 5000K CCT
- CRI: >80

ELECTRICAL

- Input voltage: 100-277V
- Power Factor: >.95
- THD: <20%

THERMAL

- -40° F to + 138° F (-40°C to 59°C) operating temperature

CONSTRUCTION

- Pre-Painted Steel construction

WARRANTY

- 5 year limited warranty; see eiko.com for warranty details

project name	type
catalog number	
comments	voltage
approved by	date



APPLICATIONS

- Offices and general lighting
- Government buildings, schools & hospitals
- Retail, grocery stores, restaurants
- T-Grid ceilings



ORDERING INFORMATION

EXAMPLE: XATRF14-H35KUX4Y

Model	Style	Size	Efficiency	CRI	Voltage	Driver	Dimming
XA : Rhodium	TRF - Troffer Rhodium Fixture	14 - 1' X 4' 22 - 2' X 2' 24 - 2' X 4'	H - High Efficiency	35K - 3500K 40K - 4000K 50K - 5000K	U - 100-277V	X2 - Xeleum 26W (2X2 Only) X4 - Xeleum 44W	Y - 0-10V dimming

PERFORMANCE SUMMARY

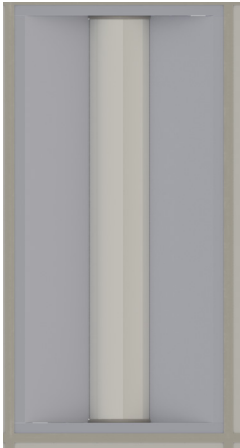
Item #	Watts	Lumens	CCT	CRI	Volts	Dimming	DLC Premium	DLC Standard
XATRF14-H35KUX4Y	27W	3,411	3500K	80+	100-277V	0-10V		✓
XATRF14-H40KUX4Y	27W	3,590	4000K	80+	100-277V	0-10V	✓	
XATRF14-H50KUX4Y	27W	3,770	5000K	80+	100-277V	0-10V		✓
XATRF22-H35KUX4Y	21W	2,593	3500K	80+	100-277V	0-10V		✓
XATRF22-H40KUX4Y	21W	2,729	4000K	80+	100-277V	0-10V	✓	
XATRF22-H50KUX4Y	21W	2,865	5000K	80+	100-277V	0-10V		✓
XATRF24-H35KUX4Y	29W	3,896	3500K	80+	100-277V	0-10V	✓	
XATRF24-H40KUX4Y	28W	3,786	4000K	80+	100-277V	0-10V	✓	
XATRF24-H50KUX4Y	28W	3,688	5000K	80+	100-277V	0-10V	✓	

AVAILABLE ACCESSORIES

Item #	Description
XCO-200MCV	Master Sensor Unit with Vacancy Mode
XCO-200MO	Master Sensor Unit with Occupancy Mode
XCO-200A	Auxiliary Sensor Unit
08-06-03-296LF	Loop Cable (10' in Length)
SMK-TC-24	Metal Surface Mount Kit for 2'x4' fixtures

DIMENSIONS

Rhodium Fixture
(XATRF)



Item #	L (Length)	W (Width)	H (Height)	Weight (Lbs)
XATRF14	47.74	11.74	3.54	7.5
XATRF22	23.5	23.74	3.83	7.7
XATRF24	47.74	23.74	3.54	11.2