



Phaeton Garage and Canopy

DESCRIPTION

The Phaeton is a high efficiency parking garage LED light fixture that features hybrid diffuser/lens optics with up-light prisms to create a new standard for low-glare and uniform illumination throughout the surrounding ceiling and floor areas. Phaeton also features Xi-Fi® technology, a powerful and easy to commission wireless lighting control system.

FEATURES

- Integrated microwave occupancy sensor and photocell for daylight harvesting
- Architecturally attractive and modern design
- Up to 140 lpw ultra-high efficiency
- Low glare and uniform illumination

CERTIFICATIONS

- Complies with IESNA requirements
- IP65 Rated
- ROHS Compliant
- DesignLights Consortium® Premium Qualified - meets the requirements for the highest DLC qualification for efficacy and lumen maintenance

PERFORMANCE

- Rated Life: L70 64,000 hours @58°C
- 4000K, 5000K CCT
- CRI: >80

ELECTRICAL

- Input voltage: 100-277V; 277-480V
- Power Factor: >.95
- THD: <20%

THERMAL

-40°F to 130°F (-40°C to 54°C) operating temperature

CONSTRUCTION

- Powder-coated aluminum construction

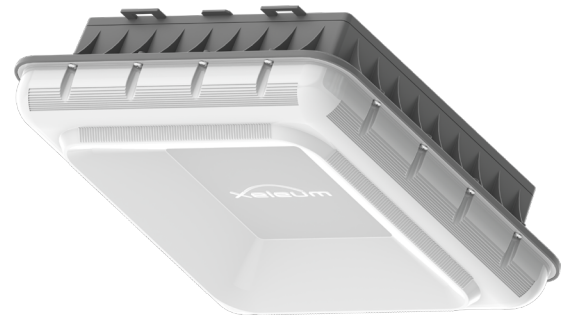
WARRANTY

- 5 year limited warranty. Additional warranty options available. Contact EiKO for details



Xi-Fi® is a simple and intuitive wireless control system. This powerful sub-GHz technology fulfills the essential lighting control requirements while being secure, reliable, and easily scalable. [Click for details](#)

| | |
|----------------|---------|
| project name | type |
| catalog number | voltage |
| approved by | date |



APPLICATIONS

- Garages
- Tunnels
- Canopy Areas
- Covered Roadways
- Entrances to Buildings

CONFIGURATOR

| MODEL | LENGTH | WATTAGE | CCT | VOLTAGE | DIMMING | IP RATING | MOUNTING | LENS | OPTIONS |
|--------------------------------------|-----------------|---|--|--|---|------------------------|---|------------------|--------------------------------|
| XBPG : Phaeton Parking Garage | 14 - 14" | 40 - 40W 75 - 75W 96 - 96W | 40 - 4000K 50 - 5000K | U - 100-277V H - 277-480V | Y - 0-10V continuous dimming (below 10%) | 65 - IP65 Rated | C - Ceiling CAN - Canopy | C - Clear | B08 - 8W Battery Backup |

NOTE: Phaeton requires the Xi-Fi Dongle (EC-004-2N-129) and Remote (EC-018-9N-147) for commissioning once installed; see reverse for details. Also required is the free Xi-Fi App; simply email your company name, point of contact and email address to xifi@xeleum.com to receive a download link.

NOTE: Battery Back-Up for 100-277V only. Different wattages for Battery Back-Up available with longer lead times.



PERFORMANCE SUMMARY

| ORDER CODE | ITEM # | WATTS | LUMENS | CCT | CRI | VOLTS | DIMMING | DLC PREMIUM | NLC QPL |
|------------|---------------------|-------|--------|-------|-----|----------|---------|-------------|---------|
| 10879 | XBPG14-4040UY65CC | 40W | 5,915 | 4000K | >80 | 100-277V | 0-10V | ✓ | ✓ |
| 11319 | XBPG14-4040UY65CANC | 40W | 5,915 | 4000K | >80 | 100-277V | 0-10V | ✓ | ✓ |
| 10880 | XBPG14-4050UY65CC | 40W | 5,925 | 5000K | >80 | 100-277V | 0-10V | ✓ | ✓ |
| 11320 | XBPG14-4050UY65CANC | 40W | 5,925 | 5000K | >80 | 100-277V | 0-10V | ✓ | ✓ |
| 10881 | XBPG14-7540UY65CC | 75W | 10,670 | 4000K | >80 | 100-277V | 0-10V | ✓ | ✓ |
| 20128 | XBPG14-7540UY65CANC | 75W | 10,670 | 4000K | >80 | 100-277V | 0-10V | ✓ | ✓ |
| 10882 | XBPG14-7550UY65CC | 75W | 10,794 | 5000K | >80 | 100-277V | 0-10V | ✓ | ✓ |
| 20129 | XBPG14-7550UY65CANC | 75W | 10,794 | 5000K | >80 | 100-277V | 0-10V | ✓ | ✓ |
| 11323 | XBPG14-9640UY65CC | 96W | 13,420 | 4000K | >80 | 100-277V | 0-10V | ✓ | ✓ |
| 11321 | XBPG14-9640UY65CANC | 96W | 13,420 | 4000K | >80 | 100-277V | 0-10V | ✓ | ✓ |
| 11324 | XBPG14-9650UY65CC | 96W | 13,674 | 5000K | >80 | 100-277V | 0-10V | ✓ | ✓ |
| 11322 | XBPG14-9650UY65CANC | 96W | 13,674 | 5000K | >80 | 100-277V | 0-10V | ✓ | ✓ |

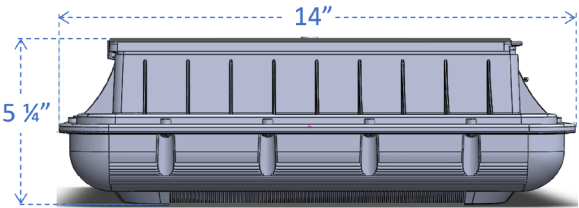
**DLC Qualified Networked Lighting Controls Systems
To order with a canopy mount, replace the CC at the end of the part number with CANC*

ACCESSORIES (REQUIRED FOR COMMISSIONING)

| ITEM # | DESCRIPTION |
|---------------|----------------------|
| EC-004-2N-129 | Xi-Fi Dongle |
| EC-018-9N-147 | Xi-Fi Remote Control |

NOTE: For purchases of 50 or more Phaetons, the Dongle and Remote Control are provided at no cost.

PRODUCT DIMENSIONS



PRODUCT DIMENSIONS

