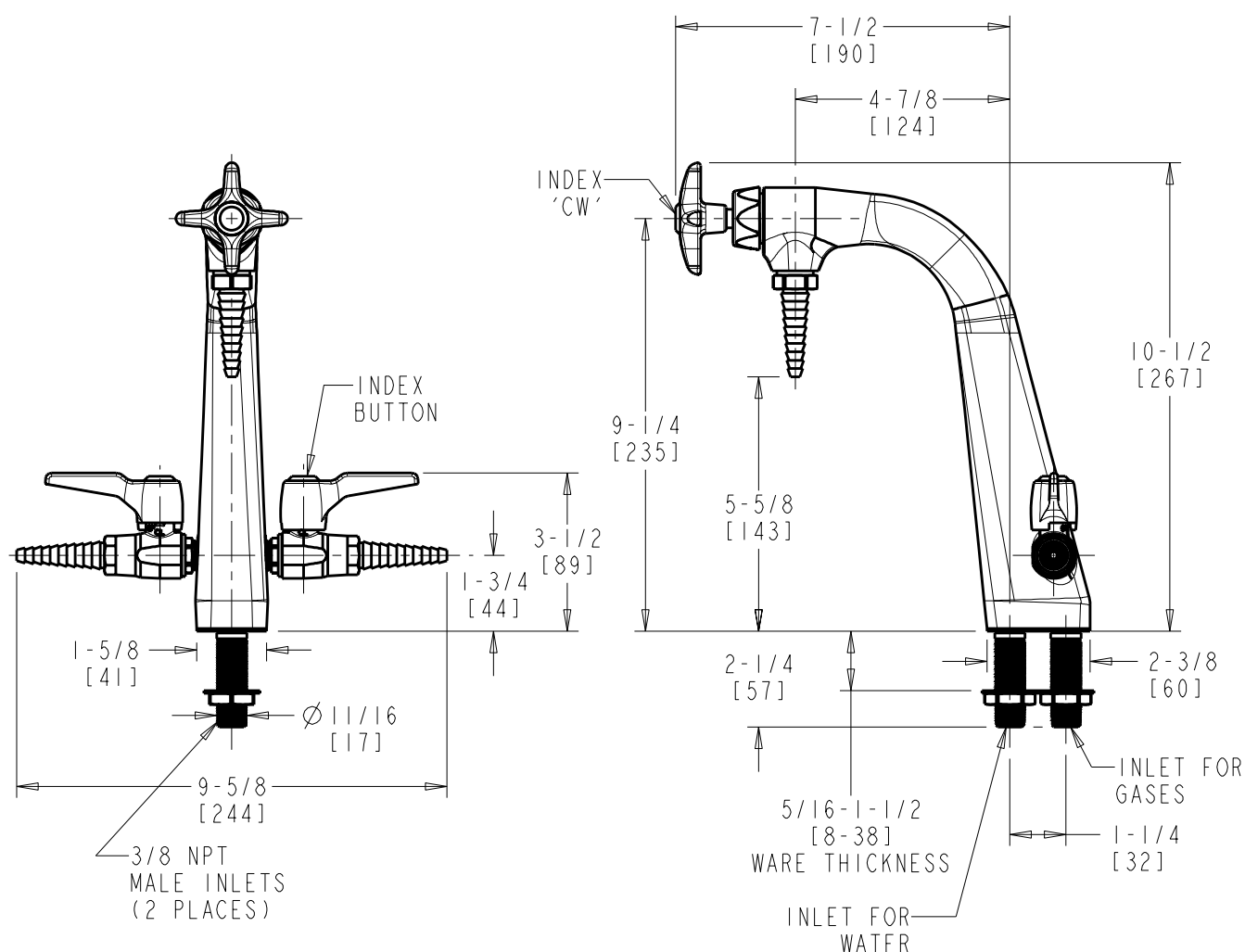


# Laboratory Combination Fittings

## LCF2-A-B11

### Combination Dual Service Fixture

- 1/4-Turn Ceramic Cartridge
- Metal Cross Handle with Cold Water Button
- Integral Spout with Straight Serrated Nozzle
- Main Service (Center Spout): Water
- Secondary Services (Side Valves): Air and Air
- Solid Brass Valve Construction
- Fully Assembled and Tested



#### For Technical Assistance:

Phone: 800-TEC-TRUE (832-8783)

Email: [techsupport.us@chicagofaucets.com](mailto:techsupport.us@chicagofaucets.com)

The Chicago Faucet Company

2100 South Clearwater Drive

Des Plaines, IL 60018

Phone: 847/803-5000

Fax: 847/803-5454

Technical: 800/832-8783

[www.chicagofaucets.com](http://www.chicagofaucets.com)