

CHICAGO FAUCETS

Last As Long As The Building

2100 SOUTH CLEARWATER DRIVE
DES PLAINES, ILLINOIS 60018-5999

FITTING NO.

2500-VO

SUBMITTED MODEL NO.

JOB NAME

ITEM NO.

SUBMITTED AS SHOWN

SUBMITTED AS NOTED

SEE ATTACHED FOR
SUBMITTED MODIFICATION

ADA INSTALLATION SHALL BE AS REQUIRED
BY APPLICABLE ADA REGULATIONS



ADA APPLIES
TO VALVE
CONTROLS ONLY

NOTE: ALL DOTTED LINE
PIPING IS 1/2" IPS
UNLESS OTHERWISE
SPECIFIED AND
SUPPLIED BY OTHERS

ON/OFF VOLUME
CONTROL VALVE

TEMPERATURE
CONTROL VALVE

HOT

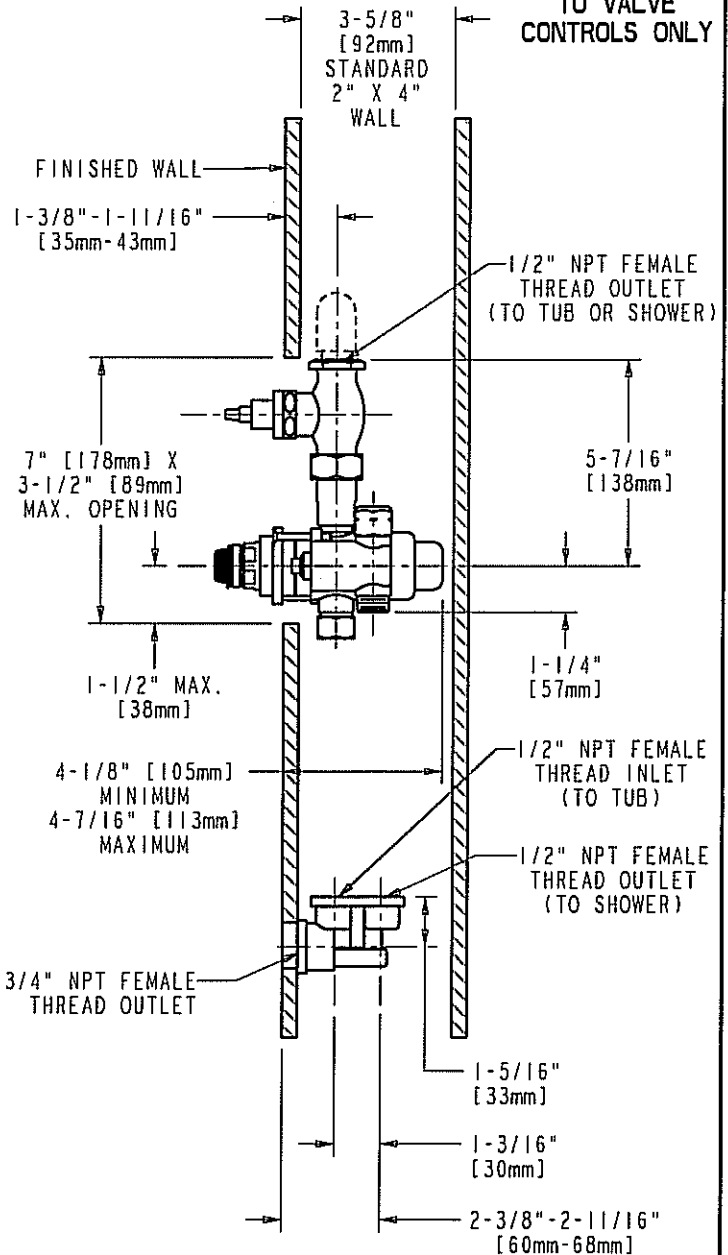
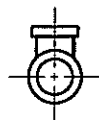
COLD

C-C INLETS

1/2" NPT MALE
CAPPED INLETS
(OPTIONAL)

BUILT-IN
INTEGRAL
CHECK STOPS

1/2" NPT MALE
THREAD INLET
(2 PLACES)



DIMENSIONS IN INCHES AND [MILLIMETERS].

TECHNICAL DATA

- TEMPSHIELD™ THERMOSTATIC/PRESSURE BALANCING TUB AND SHOWER VALVE ONLY
- THERMOSTATIC/PRESSURE BALANCING CARTRIDGE
- QUATURN OPERATING CARTRIDGE ON ON/OFF VALVE
- INTEGRAL CHECK STOPS
- VANDAL RESISTANT MOUNTING
- FINISH: CHROME PLATE

- ASME A112.18.1 COMPLIANT
- CSA B125 COMPLIANT
- ASSE 1016 APPROVED

DATE: 10-15-02

BY: JAR

CHK'D: *SID*

APP'D:

REV: A

2500-VO

ROUGHING IN DIMENSIONS MAY VARY AND ARE SUBJECT TO CHANGE. NO RESPONSIBILITY IS ASSUMED FOR USE OF SUPERCEDED OR VOIDED DATA.