

ROUGHING IN DIMENSIONS MAY VARY AND ARE SUBJECT TO CHANGE. NO RESPONSIBILITY IS ASSUMED FOR USE OF SUPERCEDED OR VOIDED DATA. (0192-1)

CHICAGO[®]
FAUCETS

2100 SOUTH CLEARWATER DRIVE
DES PLAINES, ILLINOIS 60018-5999

FITTING NO.

51-T

SUBMITTED MODEL NO.

JOB NAME

ITEM NO.

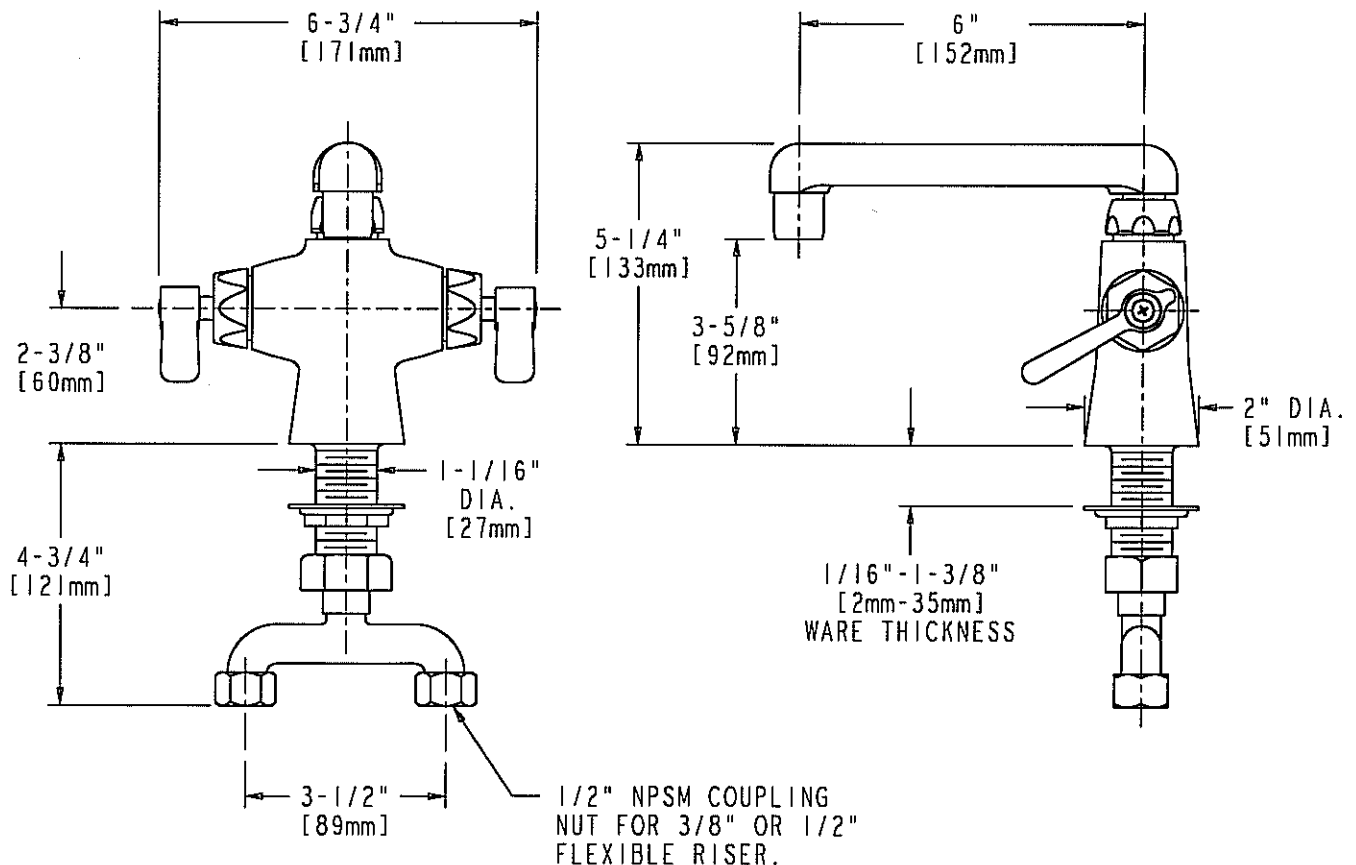
SUBMITTED AS SHOWN

SUBMITTED AS NOTED

SEE ATTACHED FOR
SUBMITTED MODIFICATION



ADA COMPLIANT



DIMENSIONS IN INCHES AND [MILLIMETERS].

TECHNICAL DATA

- COMBINATION SINK FAUCET
- S6 SWING SPOUT
- 369 INDEXED LEVER HANDLES
- QUATURN UNITS
- 3-1/2" [89mm] INLET CONNECTION TEE
- POLISHED CHROME FINISH OR AS SPECIFIED

- E3 SOFTFLO OUTLET
- 2.0 GPM [7.6 L/min.] @ 80 PSI
- ANSI A112.18.1 COMPLIANT
- CSA B125 COMPLIANT

DATE: 08-27-98

BY: MGM

CHK'D: *[Signature]*

APP'D:

REV: 08-27-98

51-T