

ROUGHING IN DIMENSIONS MAY VARY AND ARE SUBJECT TO CHANGE. NO RESPONSIBILITY IS ASSUMED FOR USE OF SUPERCEDED OR VOIDED DATA.



2100 South Clearwater Drive  
Des Plaines, IL 60018  
Phone: 847-803-5000  
Fax: 847-803-5454  
www.chicagofaucets.com

## ROUGH-IN

FITTING NO.

1100-GN8BVBE2-2CP

BY: SID

DATE: 03-04-09

CHK: *[Signature]*

REV:

SUBMITTED MODEL NO.

**FOR TECHNICAL ASSISTANCE**  
**1-800-TEC-TRUE (1-800-832-8783)**

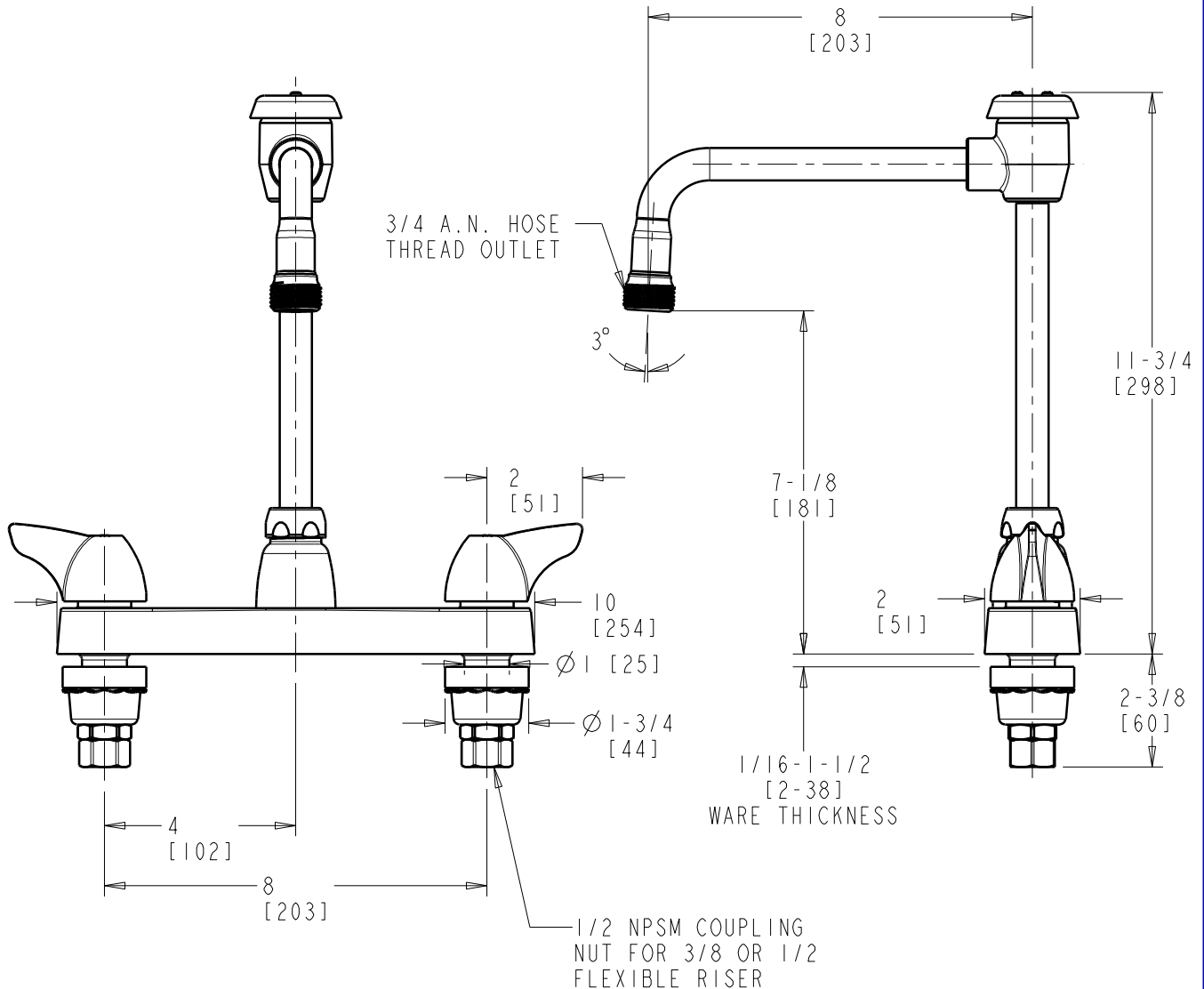
SUBMITTED AS SHOWN

SUBMITTED AS NOTED

SEE ATTACHED FOR  
SUBMITTED MODIFICATION

JOB NAME

ITEM NO.



DIMENSIONS ARE IN INCHES AND [MILLIMETERS].

### TECHNICAL DATA

- DECK MOUNTED FITTING
- GN8BVB RIGID/SWING VACUUM BREAKER SPOUT
- 1000 SINGLE WING INDEXED HANDLE
- QUATURN OPERATING CARTRIDGES
- FINISH: CHROME PLATE

- E2-2 3/4" HOSE THREAD OUTLET WITH ADAPTER
- ASSE A112.18.1/CSA B125.1 COMPLIANT
- ASSE 1001 COMPLIANT



ADA COMPLIANT