

ROUGHING IN DIMENSIONS MAY VARY AND ARE SUBJECT TO CHANGE. NO RESPONSIBILITY IS ASSUMED FOR USE OF SUPERCEDED OR VOIDED DATA.



2100 SOUTH CLEARWATER DRIVE
DES PLAINES, ILLINOIS 60018-5999

FITTING NO.

987-909CAG

SUBMITTED MODEL NO.

JOB NAME

ITEM NO.

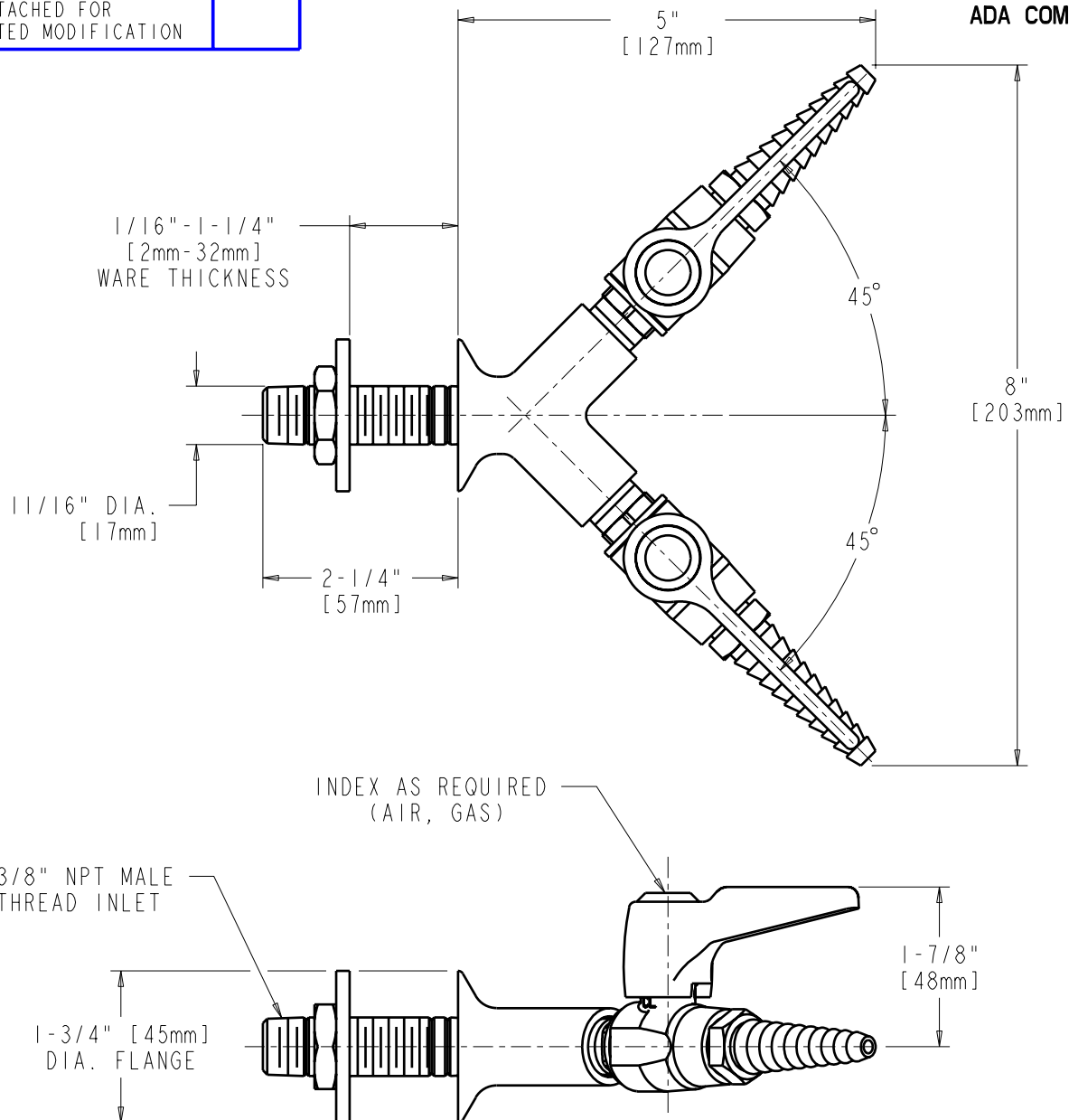
SUBMITTED AS SHOWN

SUBMITTED AS NOTED

SEE ATTACHED FOR
SUBMITTED MODIFICATION



ADA COMPLIANT



TECHNICAL DATA

- "Y" PATTERN WALL FLANGE
- (2) 909-C GAS BALL VALVES
- AIR, GAS, BUTTONS
- 979-001K SHANK ASSEMBLY
- FINISH: CHROME PLATE

- E7TC REMOVABLE SERRATED HOSE NOZZLE WITH CHECK VALVE
- FOR USE WITH 0.5-125 PSI WORKING PRESSURE
- ANSI Z21.5A
- CGA9.1M

DATE: 06-01-07

BY: JAR

CHK'D:

APP'D:

REV:

987-909CAG