

SUBMITTAL DATA SHEET

NL Service Fitting – 74758QA

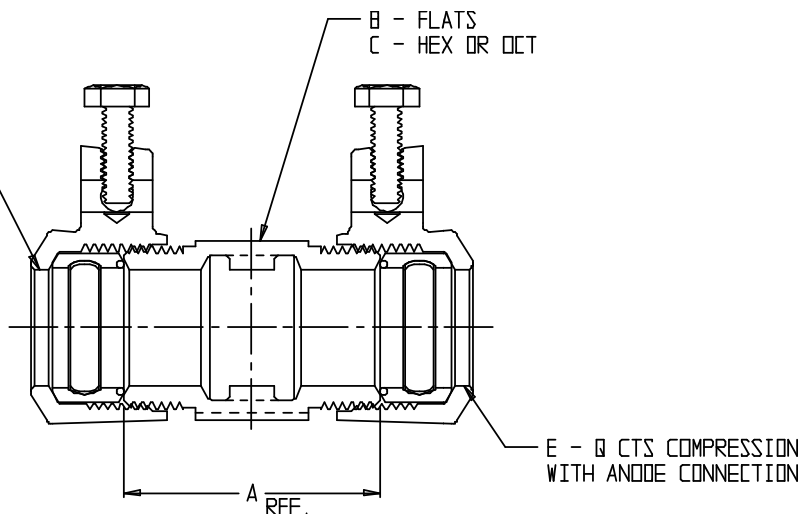
Q CTS Compression with Anode Connection x Q CTS Compression with Anode Connection



D – Q CTS COMPRESSION
WITH ANODE CONNECTION

B – FLATS
C – HEX OR OCT

| MODEL | SIZE | A | B | C | D | E |
|---------|-------------|------|------|-----|-------|-------|
| 74758QA | 3/4 | 2.00 | 1.34 | OCT | 3/4 | 3/4 |
| 74758QA | 3/4 X 1 | 2.11 | 1.38 | OCT | 3/4 | 1 |
| 74758QA | 3/4 X 1 1/4 | 2.26 | 1.88 | HEX | 3/4 | 1 1/4 |
| 74758QA | 1 | 2.40 | 1.38 | OCT | 1 | 1 |
| 74758QA | 1 X 1 1/4 | 2.61 | 1.85 | OCT | 1 | 1 1/4 |
| 74758QA | 1 1/4 | 2.56 | 1.69 | OCT | 1 1/4 | 1 1/4 |
| 74758QA | 1 1/2 | 3.31 | 2.00 | OCT | 1 1/2 | 1 1/2 |
| 74758QA | 2 | 3.53 | 2.45 | OCT | 2 | 2 |



SUBMITTAL INFORMATION

- Manufactured in compliance with ANSI/AWWA C800 (latest revision)
- Brass components in contact with potable water conform to ASTM B584, UNS C89833 (latest revision) and identified with “NL”
- Certified to NSF/ANSI 61 and NSF/ANSI 372
- Brass components not in contact with potable water conform to ASTM B62 and ASTM B584, UNS C83600 -85-5-5-5 (latest revision)
- Large wrench flats provided for proper installation
- Insert stiffeners required on all flexible plastic connections



A.Y. McDonald Mfg. Co.
P.O. Box 508
Dubuque, IA 52004-508

Toll Free: 1-800-292-2737
Fax: 1-800-832-9296
Hours: 7:00 a.m. – 5:00 p.m., CST

sales@aymcdonald.com
www.aymcdonald.com

A.Y. McDonald considers the information on this assembly drawing correct when published. Item and option availability, including specifications, are subject to change without notice.

Submitted by: