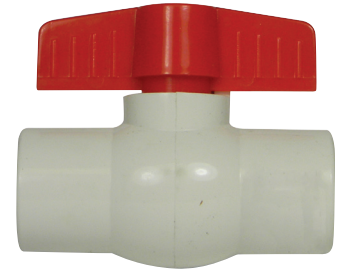


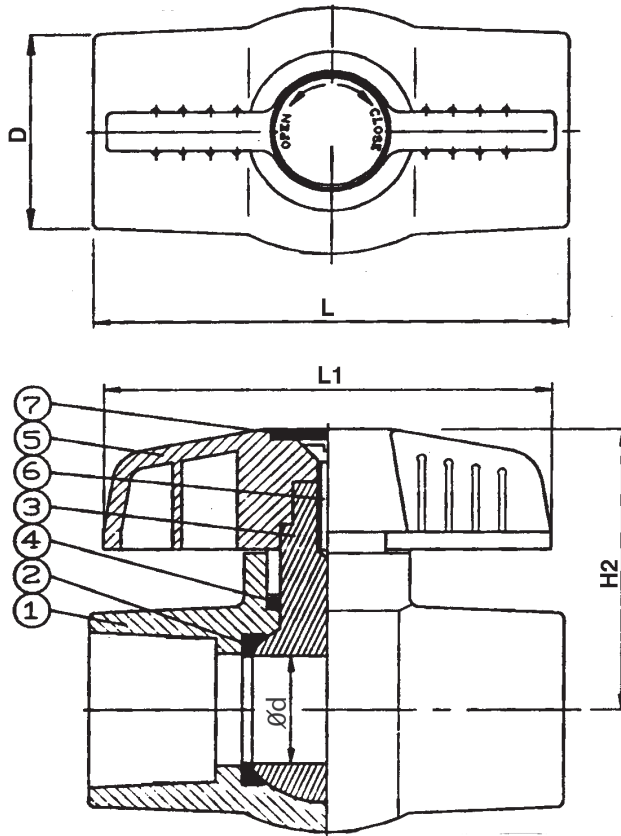
SUBMITTAL DATA SHEET

PVC Ball Valves PVC Ball Valves - 2060T

Inlet: FNPT | Outlet: FNPT



A.Y. McDonald Mfg. Co. PVC/CPVC Ball Valves & Fittings feature convenience of operation with excellent flow characteristics. Use these sturdy valves for water supply in residential, commercial, and industrial applications.



Dimensions

Size	L	L1	H2	D	Ød
1/2"	3.07	2.75	1.85	1.22	.59
3/4"	3.54	3.11	2.05	1.46	.79
1"	4.17	3.90	2.56	1.73	.94
1 1/4"	4.76	4.41	2.76	2.09	1.17
1 1/2"	5.12	4.41	2.91	2.37	1.33
2"	5.83	5.43	3.15	2.99	1.74
2 1/2"	7.11	8.03	4.33	3.54	2.17
3"	8.07	8.03	4.84	4.17	2.74
4"	9.90	9.81	5.91	5.24	3.54

Materials

No.	Part	Material
1	Body	PVC
2	Seat Seal	PTFE
3	Ball	PVC
4	O-Ring	EPDM
5	Handle	ABS
6	Bolt	Zinc-Plated Steel
7	Cap	ABS

SUBMITTAL INFORMATION

- Schedule 80 Specification
- Sizes: 1/2", 3/4", 1", 1 1/4", 1 1/2", 2"

Temperature Ratings:

- 150 PSI at 73°F
- 50 PSI at 140°F

NO-LEAD: The weighted average of the wetted surface of this no-lead product contacted by consumable water contains less than one quarter of one percent (0.25%) lead.



A.Y. McDonald Mfg. Co.
P.O. Box 508
Dubuque, IA 52004-0508

Toll Free: 1-800-292-2737
Fax: 1-800-832-9296
Hours: 7:00 a.m. - 5:00 p.m., CST

sales@aymcdonald.com
www.aymcdonald.com

A.Y. McDonald considers the information on this assembly drawing correct when published. Item and option availability, including specifications, are subject to change without notice.

Submitted by: