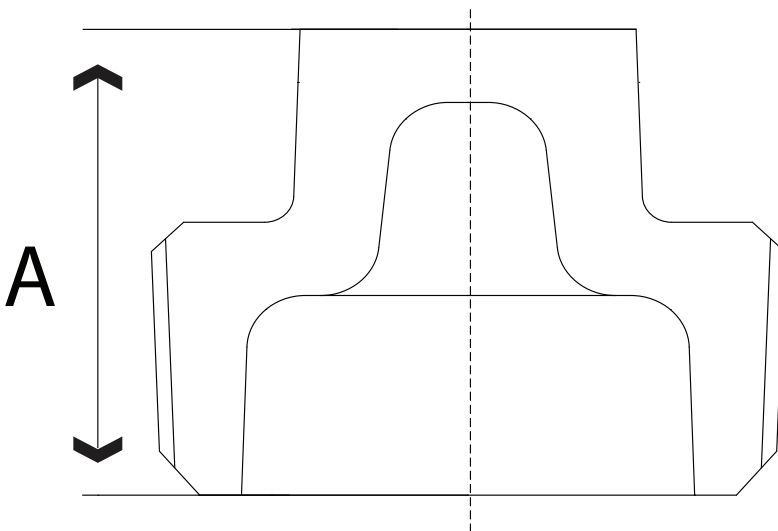


# SUBMITTAL DATA SHEET

## No-Lead 125LB Threaded Bronze Pipe Fittings Bronze Cored Plug - No-Lead - 72202



A.Y. McDonald Mfg. Co. No-Lead Pipe Fittings & Nipples are constructed from heavy duty bronze and are rated for commercial, industrial and residential applications up to 125 WOG. Threads conform to ANSI B1.20.1 and fitting dimensions comply with ANSI B16.15.



### Dimensions

| Size   | A     | Ctn Qty | Wt. |
|--------|-------|---------|-----|
| 1/2"   | 1.00" | 5       | 0.1 |
| 3/4"   | 1.15" | 5       | 0.1 |
| 1"     | 1.30" | 5       | 0.2 |
| 1 1/4" | 1.40" | 5       | 0.3 |
| 1 1/2" | 1.50" | 5       | 0.5 |
| 2"     | 1.60" | 5       | 0.7 |
| 2 1/2" | 1.85" | 1       | 1.0 |
| 3"     | 1.95" | 1       | 2.0 |
| 4"     | 2.30" | 1       | 3.6 |

### SUBMITTAL INFORMATION

- **Materials**  
C89833, AWWA C800, ASTM B584
- **Fitting Dimensions**  
ANSI B 16.15, Class 125
- **Union Dimensions**  
WWW-U-516-B
- **Threads**  
ANSI / ASME B1.20.1
- NSF / ANSI 61-4 & NSF / ANSI 372

**NO-LEAD:** The weighted average of the wetted surface of this no-lead product contacted by consumable water contains less than one quarter of one percent (0.25%) lead.



**A.Y. McDonald Mfg. Co.**  
P.O. Box 508  
Dubuque, IA 52004-0508

**Toll Free:** 1-800-292-2737  
**Fax:** 1-800-832-9296  
**Hours:** 7:00 a.m. - 5:00 p.m., CST

[sales@aymcdonald.com](mailto:sales@aymcdonald.com)  
[www.aymcdonald.com](http://www.aymcdonald.com)

A.Y. McDonald considers the information on this assembly drawing correct when published. Item and option availability, including specifications, are subject to change without notice.

**Submitted by:**