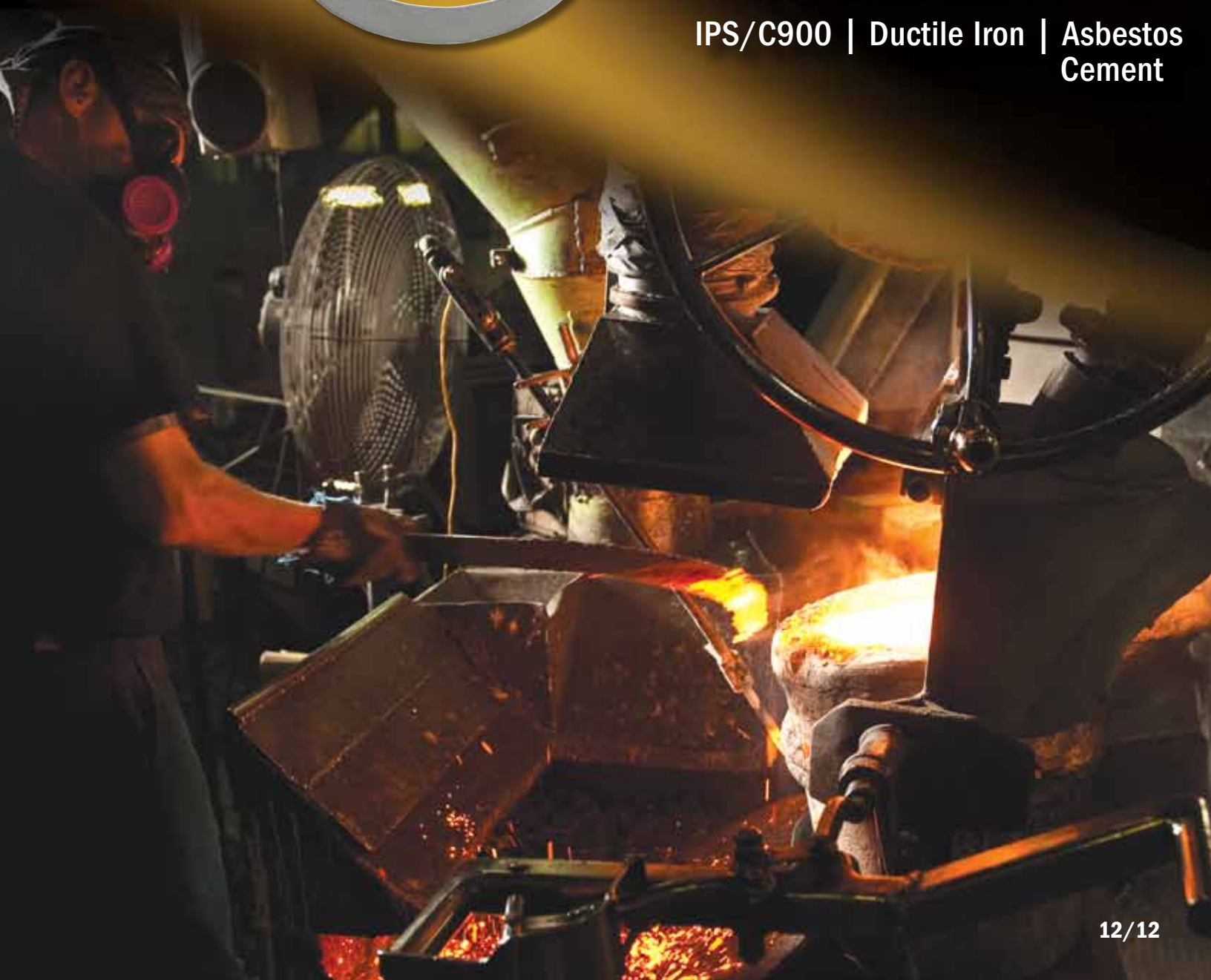




# Service Saddles

IPS/C900 | Ductile Iron | Asbestos  
Cement



	Page
Service Saddle Replacement Parts.....	2
O.D. Chart .....	3
<b>For IPS PVC Pipe</b>	
3801 & 3802.....	4
3891 & 3892.....	5
<b>For C900 PVC Pipe</b>	
3805 & 3806.....	6
3895 & 3896.....	7
3835 & 3836.....	8
3855 & 3856.....	9
3845 & 3846.....	10-11
<b>For Ductile Iron Pipe</b>	
3815 & 3816.....	12
3825 & 3826.....	13

	Page
<b>Ductile Iron Body Saddle - For DI Pipe</b>	
4815A, 4816A, 4825A, 4826A.....	14
4835A, 4836A, 4845A, 4846A, 4855A, & 4856A.....	15
<b>Ductile Iron Body Saddle - For PVC Pipe</b>	
4835A & 4836A.....	15
4845A & 4846A.....	15
4855A & 4856A.....	15
<b>Accessories</b>	
Brass Bushings.....	16-17
Instruction Sheets .....	18-19

## Service Saddles Replacement - Nuts, Bolts & Washers

MODEL	PIPE SIZE	TAP SIZE	ORDER PART NO.	MODEL	PIPE SIZE	TAP SIZE	ORDER PART NO.
3801	2" - 8"	1/2" - 1"	3100-906	3835	4" - 12"	1/2" - 2"	4148-660 Nut 4148-573 Washer
3802				3836			
3805				3845			
3806				3846			
3801	4"	1 1/2" - 2"	3100-908	3855			
3802				3856			
3805				4815A			
3806				4816A			
3801	10" - 12"	1/2" - 2"	3100-915	4825A			
3802				4826A			
3805				4835A			
3806				4836A			
3815	4" - 16"	1/2" - 2"	4148-537	4845A			
3816				4846A			
3825A				4855A			
3825B				4856A			
3826				3891	2" - 8"	1/2" - 2"	3100-911
3826A				3892			
3826B				3895			
				3896			

PIPE SIZE	PVC STEEL SIZE O.D.	PVC C900 O.D.	CAST IRON			ASBESTOS-CEMENT			STEEL	
			CLASSES		O.D.	CLASS	MACHINED END O.D.	ROUGH-BARREL O.D. (MIN-MAX)	TYPE	O.D.
			PIT	SPUN						
1/2"	.84								STD	.84
3/4"	1.05								STD	1.05
1"	1.32								STD	1.32
1 1/4"	1.66								STD	1.66
1 1/2"	1.90								STD	1.90
2"	2.38	2.50			2.50				STD	2.38
2 1/2"	2.88								STD	2.88
3"	3.50		A B,C,D		3.80	100	3.74	4.00	O.D.	3.00
				50 - 350	3.96	150	3.84	4.10	STD	3.50
						200	3.84	4.29		
3 1/2"									STD	4.00
4"	4.50	4.80	A B,C,D	50 - 350	4.80	100	4.64	4.79 - 5.14	O.D.	4.00
					5.00	150	4.81	4.97 - 5.27	STD	4.50
						200	4.81	5.22 - 5.57		
4 1/2"									STD	5.00
5"									STD	5.56
6"	6.63	6.90	A B,C,D E,F	50 - 350	6.90	100	6.91	7.05 - 7.40	O.D.	6.00
					7.10	150	6.91	7.07 - 7.37	STD	6.63
					7.22	200	6.91	7.26 - 7.56		
7"									STD	7.63
8"	8.63	9.05	A,B C,D E,F	50 - 300	9.05	100	9.11	9.22 - 9.57	O.D.	8.00
				350	9.30	150	9.11	9.27 - 9.57	STD	8.63
					9.42	200	9.11	9.39 - 9.74		
9"									STD	9.63
10"	10.75	11.10	A,B C,D E,F	50 - 200	11.10	100	11.24	11.42 - 11.77	O.D.	10.00
				250 - 350	11.40	150	11.66	11.82 - 12.12	STD	10.75
					11.60	200	11.66	11.77 - 12.12		
12"	12.75	13.20	A,B C,D E,F	50 - 200	13.20	100	13.44	13.69 - 14.04	O.D.	12.00
				250 - 350	13.50	150	13.92	14.08 - 14.38	STD	12.75
					13.76	200	13.92	14.03 - 14.38		
14"	14.00	15.30	A,B C,D E,F	50 - 100	15.30	100	15.07	15.40 - 15.80	O.D.	14.00
				150 - 300	15.65	150	16.22	16.38 - 16.73		
					15.98	200	16.22	16.48 - 16.88		
16"	16.00	17.40	A,B C,D E,F	50 - 100	17.40	100	17.14	17.54 - 17.94	O.D.	16.00
				150 - 300	17.80	150	18.46	18.62 - 18.97		
					18.16	200	18.46	18.79 - 19.19		
18"	18.00	19.50	A,B C,D	50 - 100	19.50	100	19.90	20.44	STD	18.00
				150 - 250	19.92	150	20.94	21.20		
20"	20.00	21.60	A,B C,D	50 - 100	21.60	100	22.12	22.50	STD	20.00
				150 - 200	22.06	150	23.28	23.54		
22"									STD	22.00
24"	24.00	25.80	A,B C,D	50 - 100	25.80	100	26.48	27.17	STD	24.00
				150 - 250	26.32	150	27.96	28.22		
30"	30.00	32.00	A,B C,D	50 - 100	32.00				STD	30.00
				150 - 250	32.74					

## 3801 AWWA / 3802 FNPT

### FOR IPS PVC PIPE ALL BRASS TWO BOLT SADDLES (SCHEDULE 40 OR 80)

A.Y. McDonald Mfg. Co. Model 3801, 3802 Brass Service Saddles are designed for use on PVC pipe and provide full circle support without cracking or distorting the pipe. The pressure capabilities equal, but do not exceed, the working pressure rating of the PVC pipe up to 200 PSIG. Installation instructions are provided with each saddle. Please read and follow all instructions to ensure long lasting performance.

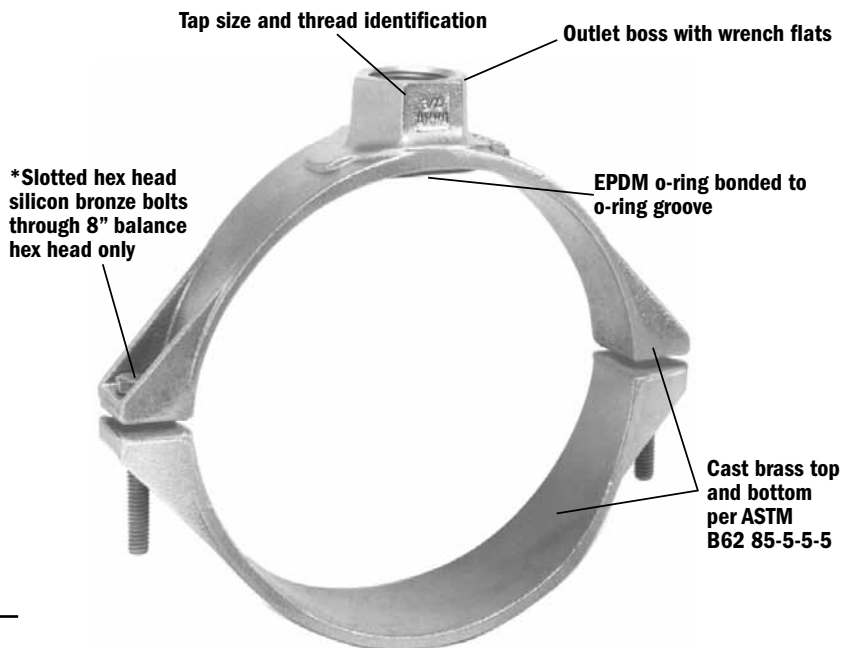
## MATERIALS

### Top and Bottom

85-5-5-5 cast brass per ASTM B62

### Silicon Bronze Bolts

- 1/2" Slotted Hex Head (3100-906)  
5/16" - 18 UNC - 2A x 2" long  
fits on 2", 2 1/2", 3", 4", 6" & 8" diameter saddles with 3/4" and 1" Taps
- 5/8" Slotted Hex Head (3100-908)  
7/16" - 14 UNC - 2A x 2" long  
fits on 4", 6" & 8" diameter saddles with 1 1/2" and 2" Taps
- 3/4" Hex Head (3100-915)  
1/2" - 13 UNC - 2A x 3" long  
fits on 10" & 12" diameter saddles with 1/2" - 2" Taps



## SIZES

### IPS Models 3801 (AWWA) and 3802 (FNPT):

#### Main Sizes:

2", 2 1/2", 3", 4", 6", 8", 10", & 12"

#### Tap Sizes:

1/2", 3/4", & 1" AWWA or FNPT on 2", 2 1/2", & 3" Saddles

1/2", 3/4", 1", 1 1/2", & 2" AWWA or FNPT on

4", 6", 8", 10", & 12" Saddles

Installation instructions are provided with each saddle. Please read and follow instructions to ensure long lasting performance.

## NOTES

- All Saddles have cast IPS or Pipe O.D. range identification.
- All A.Y. McDonald Service Saddles meet A.W.W.A. standards.
- Use on cold water services only.
- Order Saddles by Model Number, Nominal Pipe Size and Tap Size (Example: 3801 6" x 3/4").

## OPTIONS

- Contact factory for 1 1/4" tapped saddles.
- Contact factory for BSPP (British Standard Parallel Pipe) tapped saddles.
- Viton o-rings - add "V" to end of model number i.e. 3801 = 3801V  
Additional cost and lead time will apply for non-stocked options and are non-returnable

## MODELS

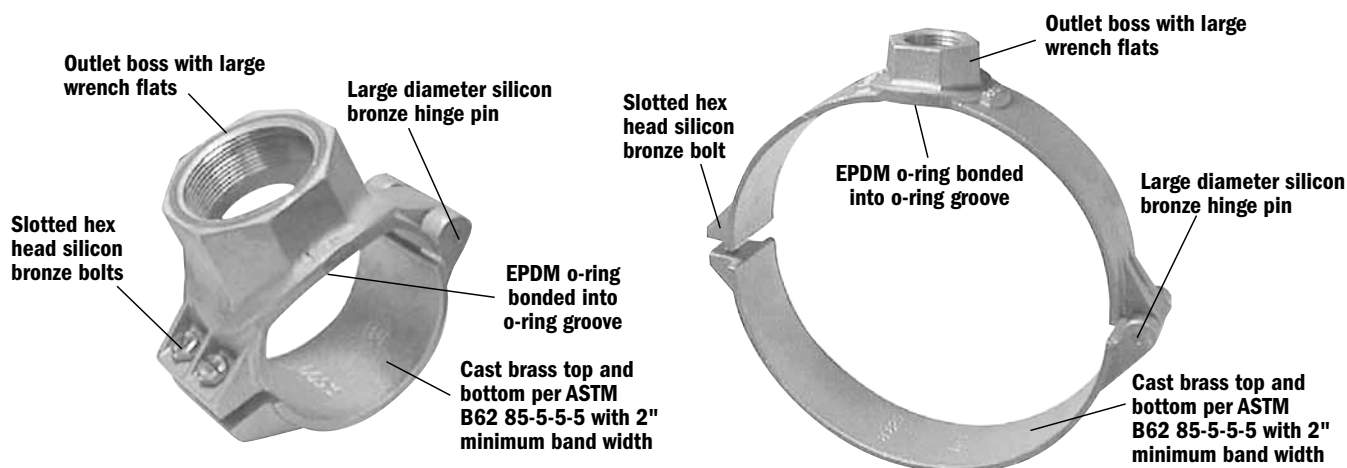
### 3801 (AWWA) & 3802 (FNPT)

Nominal Size	Tap Size	Pipe O.D.
2"	1/2", 3/4", or 1"	2.38"
2 1/2"	1/2", 3/4", or 1"	2.88"
3"	1/2", 3/4", or 1"	3.50"
4"	1/2", 3/4", 1", 1 1/2", or 2"	4.50"
6"	1/2", 3/4", 1", 1 1/2", or 2"	6.63"
8"	1/2", 3/4", 1", 1 1/2", or 2"	8.63"
10"	1/2", 3/4", 1", 1 1/2", or 2"	10.75"
12"	1/2", 3/4", 1", 1 1/2", or 2"	12.75"

# 3891 AWWA / 3892 FNPT

FOR IPS PVC PIPE ALL BRASS HINGED SADDLES (SCHEDULE 40 OR 80)

A.Y. McDonald Mfg. Co. 3891 and 3892 Hinged Service Saddles are designed to give a positive water-tight seal with full support to the PVC pipe, without cracking or distorting the pipe. The pressure capabilities equal, but do not exceed the working pressure rating of the PVC pipe up to 200 PSIG. Installation instructions are provided with each saddle. Please read and follow all instructions to ensure long lasting performance.



Installation instructions are provided with each saddle. Please read and follow instructions to ensure long lasting performance.

## MATERIALS

### Top and Bottom

85-5-5-5 cast brass per ASTM B62

### Silicon Bronze Bolts

- 1/2" Slotted Hex Head (3100-911)
- 5/16" - 18 UNC - 2A x 1 1/2" long
- One bolt for all 3/4" and 1" taps
- Two bolts for all 1 1/2" and 2" taps

### Silicon Bronze Hinge Pin

- .25 diameter - Standard for all sizes

## SIZES

### IPS Models 3891 (AWWA) and 3892 (FNPT):

#### Main Sizes:

2", 2 1/2", 3", 4", 6", 8"

#### Tap Sizes:

1/2", 3/4", & 1" AWWA or FNPT on 2" & 2 1/2" Saddles.

1/2", 3/4", 1", & 1 1/2" AWWA on 3" Saddles.

1/2", 3/4", 1", 1 1/2", & 2" FNPT on 3" Saddles.

1/2", 3/4", 1", 1 1/2", & 2" AWWA or FNPT on

4", 6", & 8" Saddles.

## NOTES

- All Saddles have cast IPS or Pipe O.D. range identification.
- All A.Y. McDonald Service Saddles meet A.W.W.A. standards.
- Use on cold water services only.
- Order Saddles by Model Number, Nominal Pipe Size and Tap Size (Example: 3891 6" x 3/4").

## OPTIONS

- Contact factory for 1 1/4" tapped saddles.
- Contact factory for availability of BSPP (British Standard Parallel Pipe) tapped saddles.
- Viton o-rings - add "V" to end of model number i.e. 3891 = 3891V

Additional cost and lead time will apply for non-stocked options and are non-returnable

## MODELS

### 3891 (AWWA) & 3892 (FNPT)

Nominal Size	Tap Size	Pipe O.D.
2"	1/2", 3/4", or 1"	2.38"
2 1/2"	1/2", 3/4", or 1"	2.88"
3"	1/2", 3/4", 1", 1 1/2", or 2"	3.50"
4"	1/2", 3/4", 1", 1 1/2", or 2"	4.50"
6"	1/2", 3/4", 1", 1 1/2", or 2"	6.63"
8"	1/2", 3/4", 1", 1 1/2", or 2"	8.63"



## 3805 AWWA / 3806 FNPT

FOR CAST IRON O.D. PVC PIPE - (AWWA C900) ALL BRASS TWO BOLT SADDLES

A.Y. McDonald Mfg. Co. 3805 and 3806 Service Saddles are designed to give a positive water-tight seal with full support to the PVC pipe, without cracking or distorting the pipe. **Order the correct saddles for your use from the charts below. Not for use with ductile iron, asbestos-cement, cast iron pipe or copper tube.** The pressure capabilities equal, but do not exceed, the working pressure rating of the pipe, up to 200 PSIG. Installation instructions are provided with each saddle. Please read and follow all instructions to ensure long lasting performance.

### MATERIALS

#### Top and Bottom

85-5-5-5 cast brass per ASTM B62

#### Silicon Bronze Bolts

- 1/2" Slotted Hex Head (3100-906)  
5/16" - 18 UNC - 2A x 2" long  
fits on 2", 2 1/2", 3", 4", 6" & 8" diameter saddles with 3/4" and 1" Taps
- 5/8" Slotted Hex Head (3100-908)  
7/16" - 14 UNC - 2A x 2" long  
fits on 4", 6" & 8" diameter saddles with 1 1/2" and 2" Taps
- 3/4" Hex Head (3100-915)  
1/2" - 13 UNC - 2A x 3" long  
fits on 10" & 12" diameter saddles with 1/2" - 2" Taps

### SIZES

C-900 Models 3805 (AWWA) and 3806 (FNPT):

#### Main Sizes:

4", 6", 8", 10", & 12"

#### Tap Sizes:

1/2", 3/4", 1", 1 1/2", & 2" AWWA or FNPT

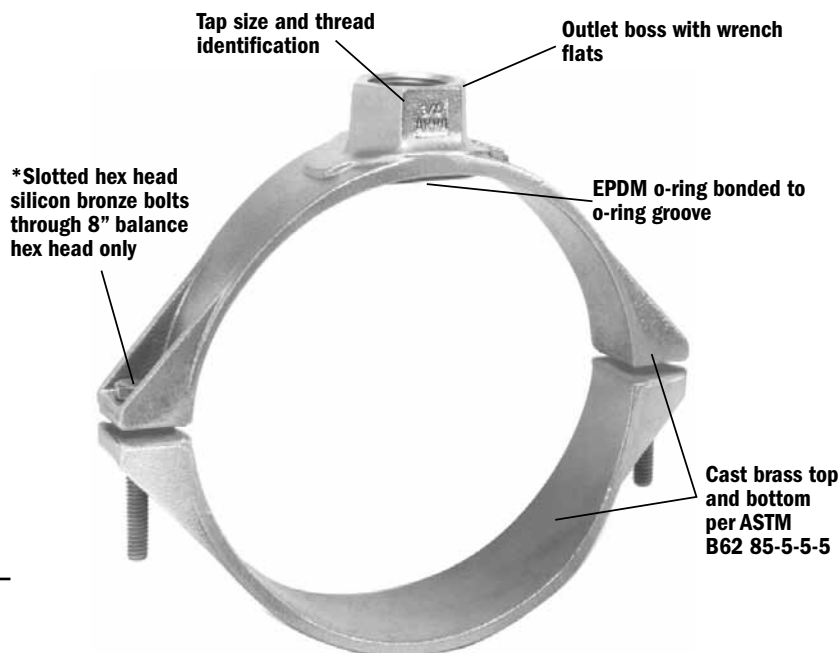
Contact factory for other tap sizes.

### NOTES

- All Saddles have cast C900 or Pipe O.D. range identification.
- All A.Y. McDonald Service Saddles meet A.W.W.A. standards.
- Use on cold water services only.
- Order Saddles by Model Number, Nominal Pipe Size and Tap Size (Example: 3805 10" x 1").

### OPTIONS

- Contact factory for 1 1/4" tapped saddles.
- Contact factory for BSPP (British Standard Parallel Pipe) tapped saddles.
- Viton o-rings - add "V" to end of model number i.e. 3805 = 3805V  
Additional cost and lead time will apply for non-stocked options and are non-returnable



Installation instructions are provided with each saddle. Please read and follow instructions to ensure long lasting performance.

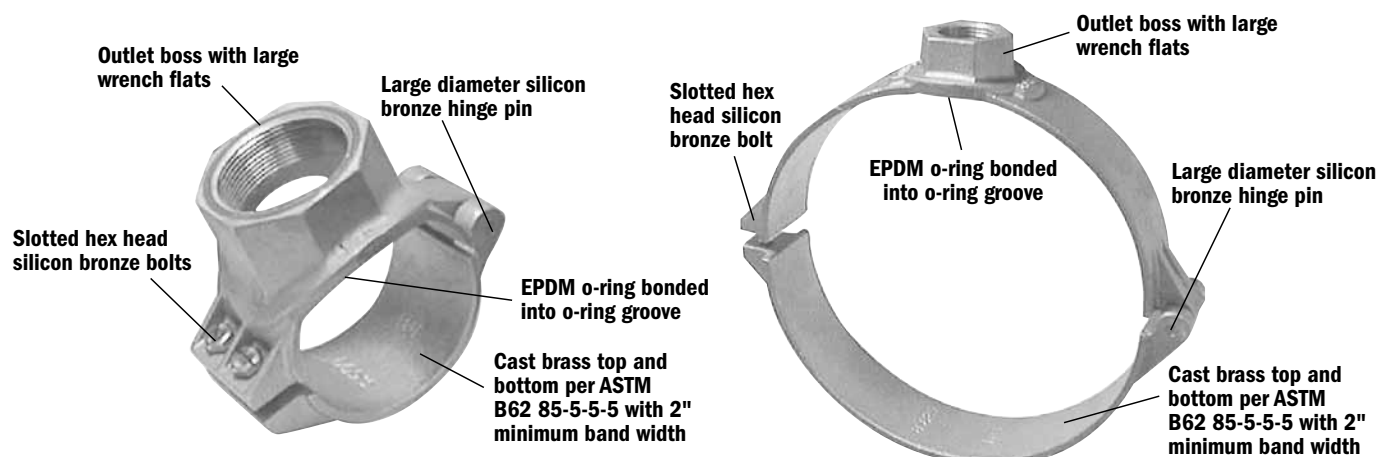
### MODELS 3805 (AWWA) & 3806 (FNPT)

Nominal Size	Tap Size	Pipe O.D.
4"	1/2", 3/4", 1", 1 1/4", 1 1/2", or 2"	4.80"
6"	1/2", 3/4", 1", 1 1/4", 1 1/2", or 2"	6.90"
8"	1/2", 3/4", 1", 1 1/4", 1 1/2", or 2"	9.05"
10"	1/2", 3/4", 1", 1 1/4", 1 1/2", or 2"	11.10"
12"	1/2", 3/4", 1", 1 1/4", 1 1/2", or 2"	13.20"

# 3895 AWWA / 3896 FNPT

FOR CAST IRON O.D. PVC PIPE - (AWWA C900) ALL BRASS HINGED SADDLES

A.Y. McDonald Mfg. Co. 3895 and 3896 Service Saddles are designed to give a positive water-tight seal with full support to the PVC pipe, without cracking or distorting the pipe. **Order the correct saddles for your use from the following charts. Not for use with ductile iron, asbestos-cement or cast iron pipe or copper tube.** The pressure capabilities equal, but do not exceed, the working pressure rating of the pipe, up to 200 PSIG. Installation instructions are provided with each saddle. Please read and follow all instructions to ensure long lasting performance.



Installation instructions are provided with each saddle. Please read and follow instructions to ensure long lasting performance.

## MATERIALS

### Top and Bottom

85-5-5-5 cast brass per ASTM B62

### Silicon Bronze Bolts

- 1/2" Slotted Hex Head (3100-911)
- 5/16" - 18 UNC - 2A x 1 1/2" long
- One bolt for all 3/4" and 1" taps
- Two bolts for all 1 1/2" and 2" taps

### Silicon Bronze Hinge Pin

- .25 diameter - Standard for all sizes

## SIZES

**C-900 Models 3895 (AWWA) and 3896 (FNPT):**

### Main Sizes:

4", 6", & 8"

### Tap Sizes:

1/2", 3/4", 1", 1 1/2", & 2" AWWA or FNPT

Contact factory for other tap sizes.

## NOTES

- All Saddles have cast C900 or Pipe O.D. range identification.
- All A.Y. McDonald Service Saddles meet A.W.W.A. standards.
- Use on cold water services only.
- Order Saddles by Model Number, Nominal Pipe Size and Tap Size (Example: 3895 8" x 1").

## OPTIONS

- Contact factory for 1 1/4" tapped saddles.
  - Contact factory for availability of BSPP (British Standard Parallel Pipe) tapped saddles.
  - Viton o-rings - add "V" to end of model number i.e. 3895 = 3895V
- Additional cost and lead time will apply for non-stocked options and are non-returnable

## MODELS 3895 (AWWA) & 3896 (FNPT)

Nominal Size	Tap Size	Pipe O.D.
4"	1/2", 3/4", 1", 1 1/4", 1 1/2", or 2"	4.80"
6"	1/2", 3/4", 1", 1 1/4", 1 1/2", or 2"	6.90"
8"	1/2", 3/4", 1", 1 1/4", 1 1/2", or 2"	9.05"

## 3835 AWWA / 3836 FNPT

FOR CAST IRON O.D. PVC PIPE - (AWWA C900) STAINLESS STEEL SINGLE STRAP SADDLES WITH BRASS TOP

A.Y. McDonald Mfg. Co. 3835 and 3836 Service Saddles with Wide Stainless Steel Band are designed for use on service line connections to cast iron O.D. PVC pipe AWWA C-900 water mains. The pressure capabilities equal, but do not exceed, the working pressure rating of the pipe, up to 200 PSIG. Can also be used on AC, Cast Iron or Ductile Iron Pipe. See installation instruction sheet for specific installation guidelines.

### MATERIALS

**Body** - 85-5-5-5 cast brass per ASTM B62

**Strap and Studs** - 304 Stainless Steel

**Nuts and Washers** - 304 Stainless Steel

Nuts are supplied with Fluorocarbon coating

### SIZES

**Main Sizes:**

4", 6", 8", 10" & 12"

**Tap Sizes:**

1/2", 3/4", 1" AWWA or

FNPT on 4", 6", 8", 10" & 12" Saddles

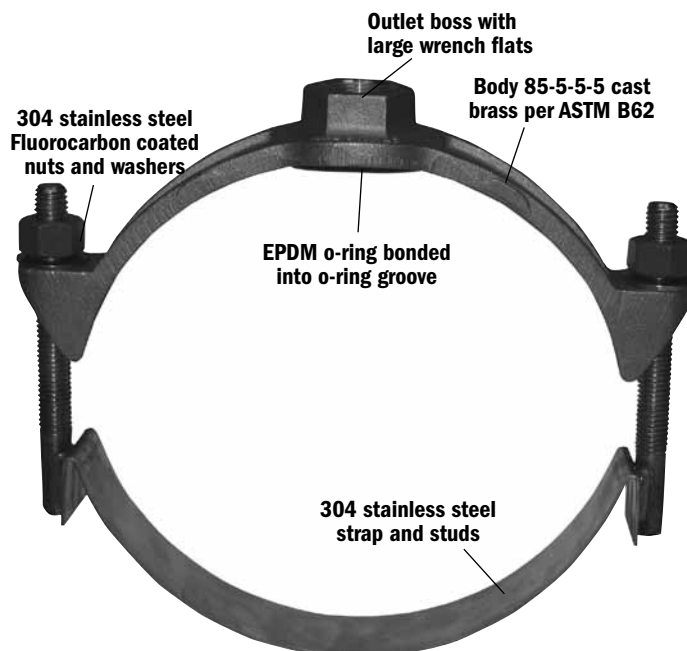
Contact factory for other tap sizes.

### NOTES

- All Saddles have cast C900 or Pipe O.D. range identification.
- All A.Y. McDonald Service Saddles meet A.W.W.A. standards.
- Use on cold water services only.
- Order Saddles by Model Number, Nominal Pipe Size and Tap Size (Example: 3835 8" x 1").

### OPTIONS

- Contact factory for availability of 1 1/4" tapped saddles.
- Contact factory for BSPP (British Standard Parallel Pipe) tapped saddles.
- Viton o-rings - add "V" to end of model number i.e. 3835 = 3835V  
Additional cost and lead time will apply for non-stocked options and are non-returnable



Installation instructions are provided with each saddle. Please read and follow instructions to ensure long lasting performance.

### MODEL 3835 (AWWA) & 3836 (FNPT)

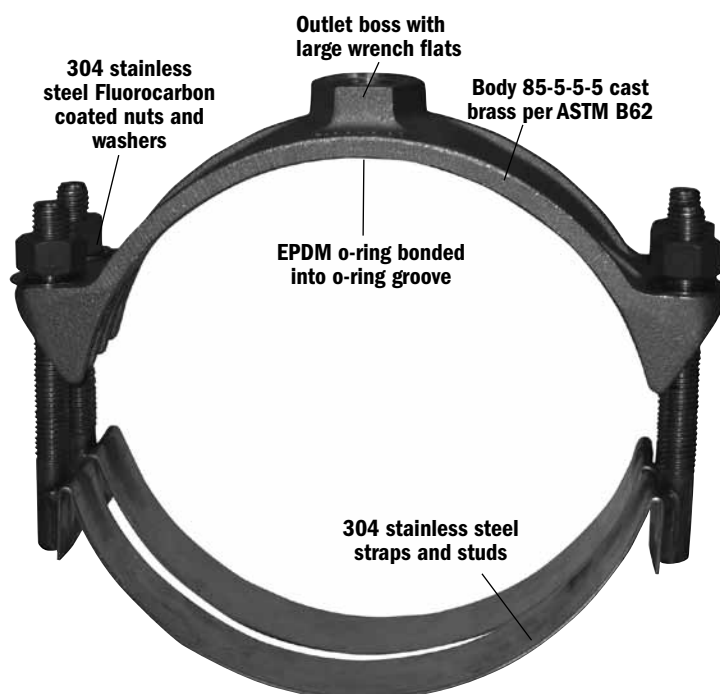
Nominal Size	Tap Size	Pipe O.D.
4"	1/2", 3/4", or 1"	4.80"
6"	1/2", 3/4", or 1"	6.90"
8"	1/2", 3/4", or 1"	9.05"
10"	1/2", 3/4", or 1"	11.10"
12"	1/2", 3/4", or 1"	13.20"



# 3855 AWWA / 3856 FNPT

**FOR CAST IRON O.D. PVC PIPE - (PVC C900) STAINLESS STEEL SINGLE STRAP SADDLES WITH BRASS TOP**

A.Y. McDonald Mfg. Co. 3855 and 3856 Service Saddles with two Stainless Steel Bands are designed for use on service line connections to cast iron O.D. PVC pipe AWWA C-900 water mains. The pressure capabilities equal, but do not exceed, the working pressure rating of the pipe, up to 200 PSIG. Can also be used on AC, Cast Iron or Ductile Iron Pipe. See installation instruction sheet for specific installation guidelines.



Installation instructions are provided with each saddle. Please read and follow instructions to ensure long lasting performance.

## MODEL 3855 (AWWA) & 3856 (FNPT)

Nominal Size	Tap Size	Pipe O.D.
4"	1/2", 3/4", 1", 1 1/2", or 2"	4.80"
6"	1/2", 3/4", 1", 1 1/2", or 2"	6.90"
8"	1/2", 3/4", 1", 1 1/2", or 2"	9.05"
10"	1/2", 3/4", 1", 1 1/2", or 2"	11.10"
12"	1/2", 3/4", 1", 1 1/2", or 2"	13.20"

## MATERIALS

**Body** - 85-5-5-5 cast brass per ASTM B62

**Strap and Studs** - 304 Stainless Steel

**Nuts and Washers** - 304 Stainless Steel

Nuts are supplied with Fluorocarbon coating

## SIZES

**Main Sizes:**

4", 6", 8", 10" & 12"

**Tap Sizes:**

1/2", 3/4", 1", 1 1/2", and 2" AWWA or

FNPT on 4", 6", 8", 10" and 12" Saddles

Contact factory for other tap sizes.

## NOTES

- All Saddles have cast C900 or Pipe O.D. range identification.
- All A.Y. McDonald Service Saddles meet A.W.W.A. standards.
- Use on cold water services only.
- Order Saddles by Model Number, Nominal Pipe Size and Tap Size (Example: 3855 8" x 1").

## OPTIONS

- Contact factory for availability of 1 1/4" tapped saddles.
- Contact factory for BSPP (British Standard Parallel Pipe) tapped saddles.
- Viton o-rings - add "V" to end of model number i.e. 3855 = 3855V

Additional cost and lead time will apply for non-stocked options and are non-returnable

## 3845 AWWA / 3846 FNPT

**FOR CAST IRON O.D. PVC PIPE - (AWWA C900) WIDE STAINLESS STEEL STRAP SADDLES WITH BRASS TOP**

A.Y. McDonald Mfg. Co. 3845 and 3846 Service Saddles with Wide Stainless Steel Band are designed for use on service line connections to cast iron O.D. PVC pipe AWWA C-900 water mains. The pressure capabilities equal, but do not exceed, the working pressure rating of the pipe, up to 200 PSIG. For C900 PVC Pipe. Can also be used on AC, Cast Iron or Ductile Iron Pipe. See installation instruction sheet for specific installation guidelines.

### MATERIALS

**Body** - 85-5-5-5 cast brass per ASTM B62

**Strap and Studs** - 304 Stainless Steel

**Nuts and Washers** - 304 Stainless Steel

Nuts are supplied with Fluorocarbon coating

### SIZES

**Main Sizes:**

4", 6", 8", 10" & 12"

**Tap Sizes:**

1/2", 3/4", 1", 1 1/2", & 2" AWWA or

FNPT on 4", 6", 8", 10", & 12" Saddles

Contact factory for other tap sizes.

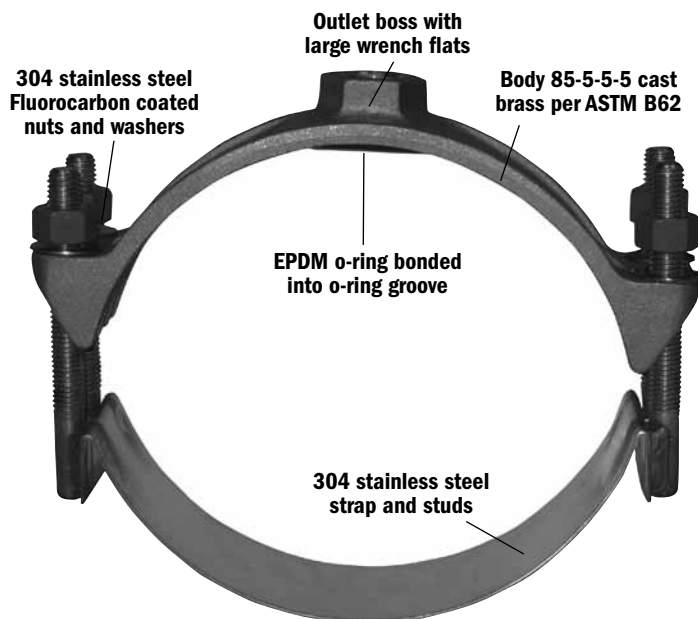
### NOTES

- All Saddles have C900 or Pipe O.D. range identification.
- All A.Y. McDonald Service Saddles meet A.W.W.A. standards.
- Use on cold water services only.
- Order Saddles by Model Number, Nominal Pipe Size and Tap Size (Example: 3845 8" x 1").

### OPTIONS

- Contact factory for availability of 1 1/4" tapped saddles.
- Contact factory for BSPP (British Standard Parallel Pipe) tapped saddles.
- Viton O-rings - add "V" to end of model number i.e. 3845 = 3845V

Additional cost and lead time will apply for non-stocked options and are non-returnable



Installation instructions are provided with each saddle. Please read and follow instructions to ensure long lasting performance.

### MODELS

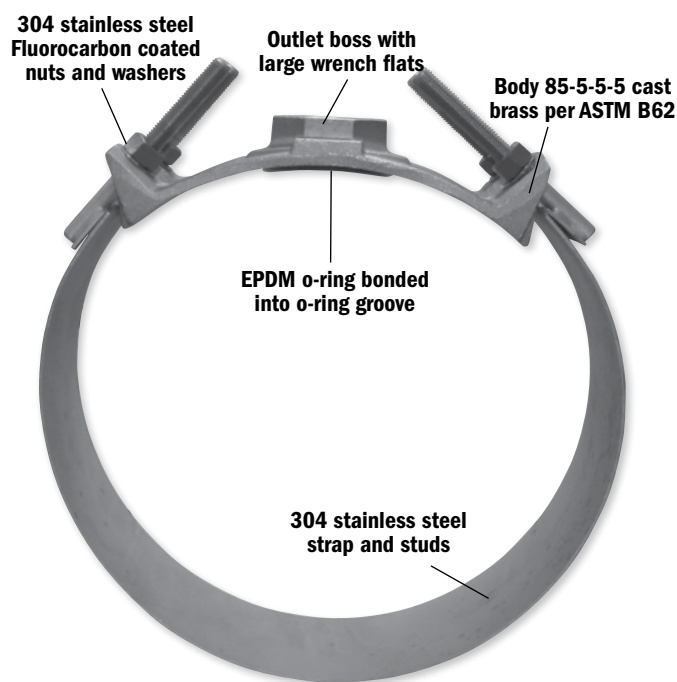
#### 3845 (AWWA) & 3846 (FNPT)

Nominal Size	Tap Size	Pipe O.D.
4"	1/2", 3/4", 1", 1 1/2", or 2"	4.80"
6"	1/2", 3/4", 1", 1 1/2", or 2"	6.90"
8"	1/2", 3/4", 1", 1 1/2", or 2"	9.05"
10"	1/2", 3/4", 1", 1 1/2", or 2"	11.10"
12"	1/2", 3/4", 1", 1 1/2", or 2"	13.20"

# 3845 AWWA / 3846 FNPT

**FOR CAST IRON O.D. PVC PIPE - (AWWA C905) WIDE STAINLESS STEEL STRAP SADDLES WITH BRASS TOP**

A.Y. McDonald Mfg. Co. 3845, A&B and 3846, A&B Service Saddles with Wide Stainless Steel Band are designed for use on service line connections to cast iron O.D. PVC pipe AWWA C-905 water mains. The pressure capabilities equal, but do not exceed, the working pressure rating of the pipe, up to 200 PSIG. For C900 PVC Pipe. Can also be used on AC, Cast Iron or Ductile Iron Pipe. See installation instruction sheet for specific installation guidelines.



Installation instructions are provided with each saddle. Please read and follow instructions to ensure long lasting performance.

## MATERIALS

**Body** - 85-5-5-5 cast brass per ASTM B62

**Strap and Studs** - 304 Stainless Steel

**Nuts and Washers** - 304 Stainless Steel

Nuts are supplied with Fluorocarbon coating

## SIZES

**Main Sizes:**

14", 16", 18", 20", 24", & 30"

**Tap Sizes:**

1/2", 3/4", 1", 1 1/2", & 2" AWWA or

FNPT on 14", 16", 18", 20", 24", & 30" Saddles

Contact factory for other tap sizes.

## NOTES

- All Saddles have C905 or Pipe O.D. range identification.
- All A.Y. McDonald Service Saddles meet A.W.W.A. standards.
- Use on cold water services only.
- Order Saddles by Model Number, Nominal Pipe Size and Tap Size (Example: **3845 8" x 1"**).

## MODELS - 3845, A & B (AWWA) & 3846, A & B (FNPT)

Nominal Size	Tap Size	Pipe O.D.
14"	1/2", 3/4", 1", 1 1/2", or 2"	A - 15.30" - 16.25"
16"	1/2", 3/4", 1", 1 1/2", or 2"	A - 17.40" - 18.40"
18"	1/2", 3/4", 1", 1 1/2", or 2"	19.50" - 20.50"
20"	1/2", 3/4", 1", 1 1/2", or 2"	A - 21.20" - 22.20"
24"	1/2", 3/4", 1", 1 1/2", or 2"	A - 23.80" - 24.80"
30"	1/2", 3/4", 1", 1 1/2", or 2"	31.74" - 32.74"
14"	1/2", 3/4", 1", 1 1/2", or 2"	B - 16.30" - 17.25"
16"	1/2", 3/4", 1", 1 1/2", or 2"	B - 18.50" - 19.25"
20"	1/2", 3/4", 1", 1 1/2", or 2"	B - 22.50" - 23.50"
24"	1/2", 3/4", 1", 1 1/2", or 2"	B - 25.60" - 26.50"

## OPTIONS

- Contact factory for availability of 1 1/4" tapped saddles.
- Contact factory for BSPP (British Standard Parallel Pipe) tapped saddles.
- Viton O-rings - add "V" to end of model number i.e. 3845 = 3845V

Additional cost and lead time will apply for non-stocked options and are non-returnable

## 3815 AWWA / 3816 FNPT

FOR DUCTILE IRON, ASBESTOS CEMENT OR CAST IRON O.D. PVC PIPE

A.Y. McDonald Mfg. Co. Model 3815 and 3816 Single Strap Service Saddles are designed for use on service line connections to ductile iron, asbestos-cement or cast iron O.D. pipe water mains. The pressure capabilities equal, but do not exceed, the working pressure rating of the pipe, up to 200 PSIG. For Ductile Iron Pipe.

### MATERIALS

**Body** - 85-5-5-5 cast brass per ASTM B62

**Strap** - Silicon Bronze

**Nuts with enlarged washer bearing surface**

85-5-5-5 cast brass per ASTM B62

### SIZES

**Main Sizes:**

4", 6", 8", 10", & 12"

**Tap Sizes:**

1/2", 3/4", & 1" AWWA or

FNPT on 4", 6", 8", 10", & 12" Saddles

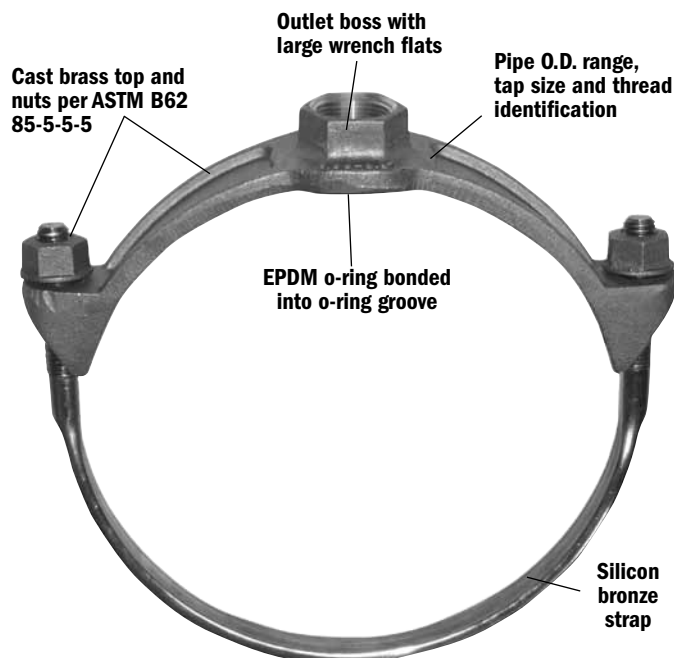
Contact factory for other tap sizes.

### NOTES

- All Saddles have Pipe O.D. size identification.
- All A.Y. McDonald Service Saddles meet A.W.W.A. standards.
- Use on cold water services only.
- Order Saddles by Model Number, Nominal Pipe Size and Tap Size (Example: 3815 8" x 1").

### OPTIONS

- Contact factory for availability of 1 1/4" tapped saddles.
  - Contact factory for BSPP (British Standard Parallel Pipe) tapped saddles.
  - Viton o-rings - add "V" to end of model number i.e. 3815 = 3815V
- Additional cost and lead time will apply for non-stocked options and are non-returnable



Installation instructions are provided with each saddle. Please read and follow instructions to ensure long lasting performance.

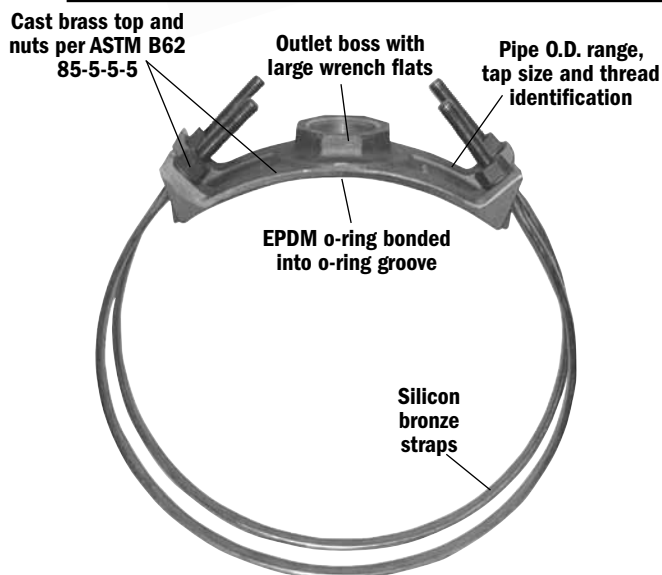
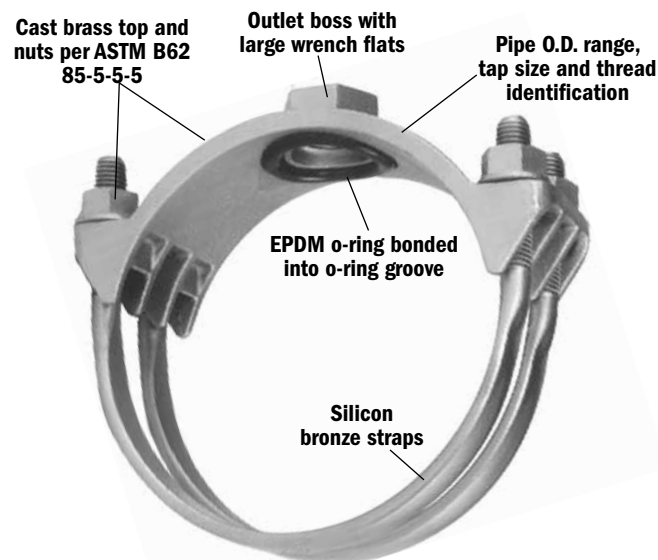
### MODEL 3815 (AWWA) & 3816 (FNPT) Single Strap

Nominal Size	Tap Size	Pipe O.D.
4"	1/2", 3/4", or 1"	4.74" - 5.40"
6"	1/2", 3/4", or 1"	6.84" - 7.50"
8"	1/2", 3/4", or 1"	8.99" - 9.67"
10"	1/2", 3/4", or 1"	11.04" - 12.12"
12"	1/2", 3/4", or 1"	13.20" - 14.38"

# 3825 AWWA / 3826 FNPT

FOR DUCTILE IRON, ASBESTOS CEMENT OR CAST IRON O.D. PVC PIPE

A.Y. McDonald Mfg. Co. Model 3825, A&B and 3826, A&B Double Strap Service Saddles are designed for use on service line connections to ductile iron, asbestos-cement or cast iron O.D. pipe water mains. The pressure capabilities equal, but do not exceed, the working pressure rating of the pipe, up to 200 PSIG. For Ductile Iron Pipe.



Installation instructions are provided with each saddle. Please read and follow instructions to ensure long lasting performance.

## MATERIALS

**Body** - 85-5-5-5 cast brass per ASTM B62

**Strap** - Silicon Bronze

**Nuts with enlarged washer bearing surface**

85-5-5-5 cast brass per ASTM B62

## SIZES

**Main Sizes:**

4", 6", 8", 10", 12", 14", 16", 18", 20", 24", & 30"

**Tap Sizes:**

1/2", 3/4", 1", 1 1/2", & 2" AWWA or

FNPT on 4", 6", 8", 10", 12", 14", 16", 18", 20", 24", & 30" Saddles

Contact factory for other tap sizes.

## NOTES

- All Saddles have Pipe O.D. size identification.
- All A.Y. McDonald Service Saddles meet A.W.W.A. standards.
- Use on cold water services only.
- Order Saddles by Model Number, Nominal Pipe Size and Tap Size (Example: 3825A 8" x 1").

## OPTIONS

- Contact factory for availability of 1 1/4" tapped saddles.
- Contact factory for BSPP (British Standard Parallel Pipe) tapped saddles.
- Viton o-rings - add "V" to end of model number i.e. 3825A = 3825AV  
Additional cost and lead time will apply for non-stocked options and are non-returnable

### MODELS - 3825, A & B (AWWA) & 3826, A & B (FNPT) Double Strap

Nominal Size	Tap Size	Pipe O.D.
4"	1/2", 3/4", 1", 1 1/2", or 2"	4.74" - 5.40"
6"	1/2", 3/4", 1", 1 1/2", or 2"	6.84" - 7.50"
8"	1/2", 3/4", 1", 1 1/2", or 2"	8.99" - 9.67"
10"	1/2", 3/4", 1", 1 1/2", or 2"	11.04" - 12.12"
12"	1/2", 3/4", 1", 1 1/2", or 2"	13.20" - 14.38"
14"	1/2", 3/4", 1", 1 1/2", or 2"	A - 15.30" - 16.25"
16"	1/2", 3/4", 1", 1 1/2", or 2"	A - 17.40" - 18.40"
18"	1/2", 3/4", 1", 1 1/2", or 2"	19.50" - 20.50"

Nominal Size	Tap Size	Pipe O.D.
20"	1/2", 3/4", 1", 1 1/2", or 2"	A - 21.20" - 22.20"
24"	1/2", 3/4", 1", 1 1/2", or 2"	A - 23.80" - 24.80"
30"	1/2", 3/4", 1", 1 1/2", or 2"	31.74" - 32.74"
14"	1/2", 3/4", 1", 1 1/2", or 2"	B - 16.30" - 17.25"
16"	1/2", 3/4", 1", 1 1/2", or 2"	B - 18.50" - 19.25"
20"	1/2", 3/4", 1", 1 1/2", or 2"	B - 22.50" - 23.50"
24"	1/2", 3/4", 1", 1 1/2", or 2"	B - 25.60" - 26.50"



## 4815A, 4816A, 4825A, & 4826A

### DUCTILE IRON BODY SADDLES FOR DUCTILE IRON PIPE

A.Y. McDonald Ductile Iron Body Service Saddles have a wide range of specified models and are designed for use with cast or ductile iron, PVC and asbestos cement pipe. These saddles offer a trouble-free and efficient way of tapping a water main. They are recommended for use on underground water mains, while optional wide stainless steel bands are recommended for use on PVC. The pressure capabilities equal, but do not exceed, the working pressure rating of the pipe, up to 200 PSIG. A.Y. McDonald Mfg. Co. recommends and supports the standard tapping practices and recommended material requirements for tapping PVC pipe outlined in the Uni-Bell Handbook of PVC Pipe and the AWWA Manual M23.

- Single Strap (Zinc plated steel) are designed for use with all taps.
- Double Strap (Zinc plated steel) are designed for use with all taps.

### MATERIALS

**Body** - Ductile Iron

**Coating** - Fusion Epoxy

**Strap** - Zinc Plated Steel

**Nuts** - Xylan® coated 304 Stainless Steel

**Washer** - 304 Stainless Steel

### SIZES

**Main Sizes:**

4", 6", 8", 10", & 12"

**Tap Sizes:**

1/2", 3/4", 1", 1 1/4", 1 1/2", & 2" AWWA or

FNPT 4", 6", 8", 10", & 12" Saddles

Contact factory for other tap sizes.

### NOTES

- All Saddles have Pipe O.D. size identification.
- All A.Y. McDonald Service Saddles meet A.W.W.A. standards.
- Use on cold water services only.
- Order Saddles by Model Number, Nominal Pipe Size and Tap Size (Example: 4815A 8" x 1").

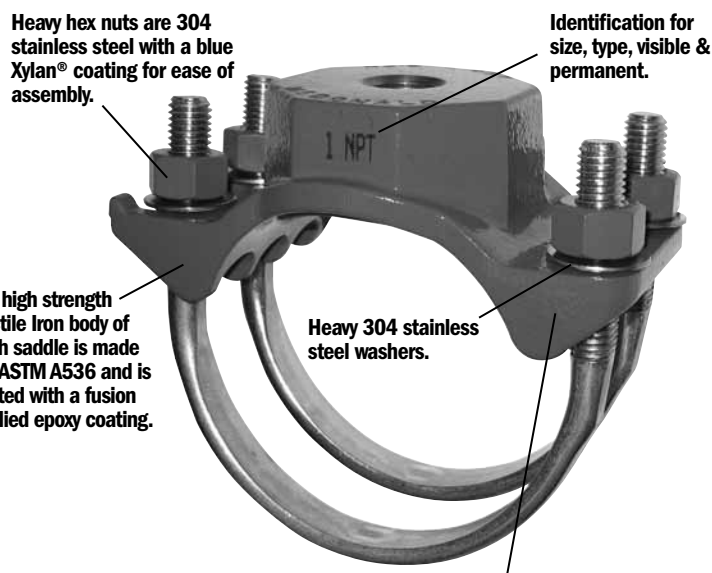
### OPTIONS

4815A = 4815AV. Additional cost and lead time will apply for non-stocked options and are non-returnable

**4815A AWWA & 4816A FNPT Tap**  
Single 5/8" steel (Zinc plated with a dichromate seal) with 7/8" flat bearing surface.

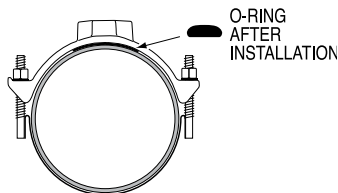
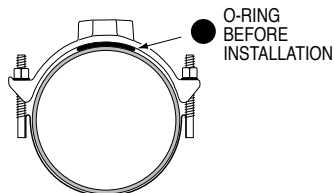


**4825A AWWA & 4826A FNPT Tap**  
Double 5/8" steel (Zinc plated with a dichromate seal) with 7/8" flat bearing surface.



One side of the saddle has closed lugs to allow for pre-assembly, the other side has tapered open lugs with nubs to assist and make installation easier.

Installation instructions are provided with each saddle. Please read and follow instructions to ensure long lasting performance.



These saddles include a heavy duty EPDM o-ring gasket that is adhered to the saddle to insure a positive seal equal to, but not exceeding, the pressure rating of the pipe, up to 200 PSIG.

### MODELS

**4815A (AWWA), 4816A (FNPT) Single Strap**  
**4825A (AWWA), 4826A (FNPT) Double Strap**

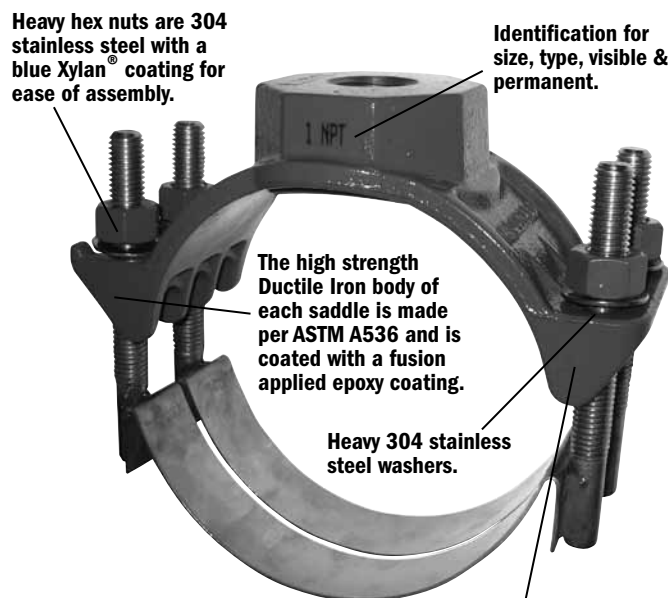
Nominal Size	Tap Size	Pipe O.D.
4"	1/2", 3/4", 1", 1 1/4", 1 1/2", or 2"	4.50" - 4.80"
6"	1/2", 3/4", 1", 1 1/4", 1 1/2", or 2"	6.63" - 6.90"
8"	1/2", 3/4", 1", 1 1/4", 1 1/2", or 2"	8.63" - 9.05"
10"	1/2", 3/4", 1", 1 1/4", 1 1/2", or 2"	10.75" - 11.10"
12"	1/2", 3/4", 1", 1 1/4", 1 1/2", or 2"	12.75" - 13.20"

# 4835A, 4836A, 4845A, 4846A, 4855A, & 4856A

## DUCTILE IRON BODY SADDLES FOR C900 PVC PIPE

A.Y. McDonald Ductile Iron Body Service Saddles have a wide range of specified models and are designed for use with cast or ductile iron, PVC and asbestos cement pipe. These saddles offer a trouble-free and efficient way of tapping a water main. They are recommended for use on underground water mains, while optional wide stainless steel bands are recommended for use on PVC. The pressure capabilities equal, but do not exceed, the working pressure rating of the pipe, up to 200 PSIG. A.Y. McDonald Mfg. Co. recommends and supports the standard tapping practices and recommended material requirements for tapping PVC pipe outlined in the Uni-Bell Handbook of PVC Pipe and the AWWA Manual M23.

- Single Strap (Stainless Steel) are designed for use with all taps.
- Double Strap (Stainless Steel) are designed for use with all taps.
- Single Wide Strap (Stainless Steel) are designed for use with all taps.



One side of the saddle has closed lugs to allow for pre-assembly, the other side has tapered open lugs with nubs to assist and make installation easier.

Installation instructions are provided with each saddle. Please read and follow instructions to ensure long lasting performance.

### MATERIALS

**Body** - Ductile Iron

**Coating** - Fusion Epoxy

**Strap** - Zinc Plated Steel

**Nuts** - Xylan® coated 304 Stainless Steel

**Washer** - 304 Stainless Steel

### SIZES

**Main Sizes:**

4", 6", 8", 10", & 12"

**Tap Sizes:**

1/2", 3/4", 1", 1 1/4", 1 1/2", & 2" AWWA or FNPT 4", 6", 8", 10", & 12" Saddles

Contact factory for other tap sizes.

### NOTES

- All Saddles have Pipe O.D. size identification.
- All A.Y. McDonald Service Saddles meet A.W.W.A. standards.
- Use on cold water services only.
- Order Saddles by Model Number, Nominal Pipe Size and Tap Size (Example: 4835A 8" x 1").

### OPTIONS

- Viton o-rings - add "V" to end of model number i.e. 4835A = 4835AV. Additional cost and lead time will apply for non-stocked options and are non-returnable

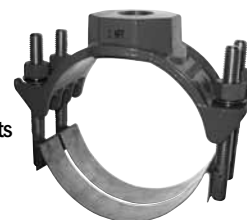
**4835A AWWA & 4836A FNPT Tap**  
Single stainless steel band and studs utilize 5/8" UNC threaded bolts of 304 stainless steel.



**4845A AWWA & 4846A FNPT Tap**  
Single 3 1/4" wide four bolt stainless steel band and studs utilize 5/8" UNC threaded bolts of 304 stainless steel.



**4855A AWWA & 4856A FNPT Tap**  
Double stainless steel band and studs utilize 5/8" UNC threaded bolts of 304 stainless steel.



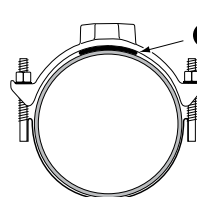
### MODELS

**4835A (AWWA), 4836A (FNPT) Single Strap**

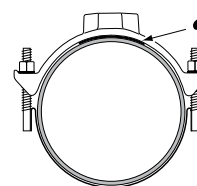
**4845A (AWWA), 4846A (FNPT) Wide Strap**

**4855A (AWWA), 4856A (FNPT) Double Strap**

Nominal Size	Tap Size	Pipe O.D.
4"	1/2", 3/4", 1", 1 1/4", 1 1/2", or 2"	4.50" - 4.80"
6"	1/2", 3/4", 1", 1 1/4", 1 1/2", or 2"	6.63" - 6.90"
8"	1/2", 3/4", 1", 1 1/4", 1 1/2", or 2"	8.63" - 9.05"
10"	1/2", 3/4", 1", 1 1/4", 1 1/2", or 2"	10.75" - 11.10"
12"	1/2", 3/4", 1", 1 1/4", 1 1/2", or 2"	12.75" - 13.20"



O-RING BEFORE INSTALLATION



O-RING AFTER INSTALLATION

These saddles include a heavy duty EPDM o-ring gasket that is adhered to the saddle to insure a positive seal equal to, but not exceeding, the pressure rating of the pipe, up to 200 PSIG.

# BRASS BUSHINGS

## MODEL 747011

AWWA x AWWA Bushing

Model Number	Male AWWA		Female AWWA
747011	3/4"	X	1/2"
747011	1"	X	3/4"
747011	1 1/4"	X	3/4"
747011	1 1/4"	X	1"
747011	1 1/2"	X	3/4"
747011	1 1/2"	X	1"
747011	2"	X	3/4"
747011	2"	X	1"
747011	2"	X	1 1/4"
747011	2"	X	1 1/2"



3/4" x 1/2"



2" x 1 1/2"

**747011**

## MODEL 747014

AWWA x FNPT Bushing

Model Number	Male AWWA		Female NPT
747014	3/4"	X	1/2"
747014	1"	X	3/4"
747014	1 1/2"	X	1 1/4"
747014	2"	X	1 1/4"
747014	2"	X	1 1/2"



3/4" x 1/2"



2" x 1 1/2"

**747014**

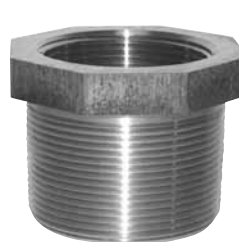
## MODEL 747041

MNPT x Female AWWA Bushing

Model Number	Male NPT		Female AWWA
747041	1"	X	3/4"
747041	1 1/4"	X	3/4"
747041	1 1/4"	X	1"
747041	1 1/2"	X	3/4"
747041	1 1/2"	X	1"
747041	2"	X	3/4"
747041	2"	X	1"
747041	2"	X	1 1/4"
747041	2"	X	1 1/2"



1" x 3/4"



2" x 1 1/2"

**747041**

## PLUGS

**73206 - Plug - AWWA Corp. Threads x Square Head**

Sizes Available: 1/2", 5/8", 3/4", 1", 1 1/4", 1 1/2", 2"

**732060 - Plug - To Replace AWWA Corp. Threads x Inside Driving Threads**

Sizes Available: 5/8" x 5/8", 3/4" x 5/8", 1" x 5/8"

**732080 - Plug - To Replace MNPT Corp. Threads x Inside Driving Threads**

Size Available: 3/4" x 5/8", 1" x 5/8"

**73208 - Plug - MNPT Corp. Threads x Square Head**

Size Available: 1/2", 3/4", 1", 1 1/4", 1 1/2", 2"

**73208S - Plug - MNPT Corp. Threads x Square Head**

Size Available: 1/2", 3/4", 1 1/2", 2"

**73209 - Plug - Male Copper Flare Thread x Square Head**

Size Available: 1" (Use with tube nut - nut not provided)

## 2 Piece Saddle - 3801, 3802, 3805, 3806

1. Saddles should be installed after pipe pressure testing is completed.
2. Use only on PVC pipe. Make sure you have proper type and size of saddle for pipe. Reference pipe diameter, tap size and identification located on each saddle.
3. Make sure saddle sealing surface on the pipe is clean, free of "nicks", gouges, or other imperfections that could cause leakage.
4. DO NOT use Vaseline®, plumber's grease, or any other petroleum based product on seals or o-rings.
5. Place saddle outlet and strap around pipe and attach together loosely using capscrews into tapped holes. Then rotate the saddle into desired position.
6. A.Y. McDonald saddles are **NOT** designed to bottom out. Alternating between each bolt, tighten to the following torques:  
**FOR 3/4" AND 1" THREAD SIZE OUTLETS:**  
2", 2-1/2", and 3" pipe - 4 - 5 **FOOT-POUNDS**.  
(approx. 4 to 5 lbs. pull on 12" wrench)  
4", 6", and 8" pipe - 5 - 6 **FOOT-POUNDS**.  
(approx. 5 to 6 lbs. pull on 12" wrench)  
10" and 12" pipe - 24 - 26 **FOOT-POUNDS**.  
(approx. 24 to 26 lbs. pull on 12" wrench)  
**FOR 1-1/2" AND 2" THREAD SIZE OUTLETS:**  
4" and 6" pipe - 13 - 15 **FOOT-POUNDS**.  
(approx. 13 to 15 lbs. pull on 12" wrench)  
8" pipe - 17 - 19 **FOOT-POUNDS**.  
(approx. 17 to 19 lbs. pull on 12" wrench)  
10" and 12" pipe - 24 - 26 **FOOT-POUNDS**.  
(approx. 24 to 26 lbs. pull on 12" wrench)
7. Overtightening can cause failure of saddle or bolt.
8. After the corporation stop has been installed, recheck saddle torque and tighten if necessary.
9. McDonald saddles are designed to withstand water working pressure up to but not exceeding the working pressure rating of the pipe up to 200 PSIG maximum. **Use only on a cold water service.**
10. Saddle testing should be accomplished while services are exposed and prior to backfilling.

3210-327

8/11

## Stainless Steel Band Saddle -

**3835, 3836, 3845, 3845A, 3845B, 3846, 3846A, 3846B, 3855, 3856, 4835A, 4836A, 4845A, 4846A, 4855A, 4856A**

1. Whenever possible, saddles should be installed after pipe pressure testing is completed.
2. Make sure the proper type and size saddle have been selected for the pipe.  
**NOTE:** Both 10" and 12" saddles are available with multiple strap and saddle top combinations. Make sure the pipe size lies in the ranges listed on the strap/saddle top combination.
3. Clean pipe surface thoroughly.
4. DO NOT use Vaseline®, plumber's grease, or any other petroleum based product on seals or o-rings.
5. Mount saddle on pipe with outlet facing desired direction.
6. Tighten nuts evenly to a torque of **30-35 FOOT POUNDS**.
7. Overtightening can cause failure of the pipe and/or the saddle.
8. After the corporation stop has been installed, recheck saddle torque and tighten if necessary.
9. A.Y. McDonald stainless steel band saddles are designed to withstand water working pressure, up to but not exceeding, the working pressure rating of the pipe. **Use only on a cold water service.**
10. Saddle testing should be accomplished while services are exposed and prior to backfilling.

3210-381

8/11

## Hinged Saddle - 3891, 3892, 3895, 3896

1. Saddles should be installed after pipe pressure testing is completed.
2. Use only on PVC pipe.
3. Make sure you have proper type and size of saddle for pipe. Reference pipe diameter range, tap size and identification located on each hinged saddle.
4. Clean pipe surface thoroughly.
5. DO NOT use Vaseline®, plumber's grease, or any other petroleum based product on seals or o-rings.
6. Mount saddle on pipe with outlet facing desired direction.
7. McDonald hinged saddles are **NOT** designed to bottom out. Tighten bolts to the following torques:  
**3/4" and 1" thread size outlets:**  
2", 2 1/2", 3" pipe - 4 - 5 **FOOT-POUNDS**.  
(approx. 4 to 5 lbs pull on a 12" wrench)  
4", 6", 8" pipe - 5 - 6 **FOOT-POUNDS**.  
(approx. 5 to 6 lbs pull on a 12" wrench)  
**1 1/2" and 2" thread size outlets:**  
3", 4" pipe - 5 - 6 **FOOT-POUNDS\***.  
(approx. 5 to 6 lbs pull on a 12" wrench)  
6", 8" pipe - 7 - 9 **FOOT-POUNDS\***.  
(approx. 7 to 9 lbs pull on a 12" wrench)  
\*Be sure to alternate tightening of the 2 bolts to ensure even loading.
8. Overtightening can cause failure of saddle, bolt or hinge pin.
9. After the corporation stop has been installed, recheck saddle torque and tighten if necessary.
10. McDonald hinged saddles are designed to withstand water working pressure up to but not exceeding the working pressure rating of the pipe up to 200 PSIG maximum. **Use only on a cold water service.**
11. Saddle testing should be accomplished while services are exposed and prior to backfilling.

3210-308

8/11

## Bronze Single Strap Saddle - 3815, 3816

1. Whenever possible, saddles should be installed after pipe pressure testing is completed.
2. Make sure you have proper type and size of saddle for pipe. Reference pipe diameter range, tap size and identification located on the top piece of each saddle.
3. **Do not use on PVC pipe.**
4. Clean pipe surface thoroughly.
5. DO NOT use Vaseline®, plumber's grease, or any other petroleum based product on seals or o-rings.
6. Mount saddle on pipe with outlet facing desired direction.
7. Tighten nuts evenly to a torque of **45-55 FOOT POUNDS**.
8. After the corporation stop has been installed, recheck saddle torque and tighten if necessary.
9. A.Y. McDonald single strap saddles are designed to withstand water working pressure up to, but not exceeding, the working pressure rating of the pipe. **Use only on a cold water service.**
10. Saddle testing should be accomplished while services are exposed and prior to backfilling.

3210-319

8/11



## Bronze Double Strap Saddle -

**3825, 3825A, 3825B, 3826, 3826A, 3826B**

1. Whenever possible, saddles should be installed after pipe pressure testing is completed.
2. Make sure you have proper type and size of saddle for pipe. Reference pipe diameter range, tap size and identification located on each double strap top.
3. Clean pipe surface thoroughly.
4. DO NOT use Vaseline®, plumber's grease, or any other petroleum based product on seals or o-rings.
5. Mount saddle on pipe with outlet facing desired direction.
6. **Tighten nuts evenly to a torque of 45-55 FOOT POUNDS.**
7. **Do not use on PVC pipe unless installation meets pipe manufacturers recommendations or approval. If used with PVC pipe - tighten nuts evenly to 30 foot pounds. Overtightening can cause failure of the pipe.**
8. After the corporation stop has been installed, recheck saddle torque and tighten if necessary.
9. A.Y. McDonald double strap saddles are designed to withstand water working pressure up to but not exceeding the working pressure rating of the pipe. **Use only on a cold water service.**
10. Saddle testing should be accomplished while services are exposed and prior to backfilling.

3210-302

8/11

## Steel Single Strap Saddle - 4815A, 4816A

1. Whenever possible, saddles should be installed after pipe pressure testing is completed.
2. Make sure you have proper type and size of saddle for pipe. Reference pipe diameter range, tap size and identification located on the top piece of each saddle.
3. **Do not use on PVC pipe.**
4. Clean pipe surface thoroughly.
5. DO NOT use Vaseline®, plumber's grease, or any other petroleum based product on seals or o-rings.
6. Mount saddle on pipe with outlet facing desired direction.
7. **Tighten nuts evenly to a torque of 45-55 FOOT POUNDS.**
8. After the corporation stop has been installed, recheck saddle torque and tighten if necessary.
9. A.Y. McDonald single strap saddles are designed to withstand water working pressure up to, but not exceeding, the working pressure rating of the pipe. **Use only on a cold water service.**
10. Saddle testing should be accomplished while services are exposed and prior to backfilling.

3210-379

8/11

## Steel Double Strap Saddle -

**4825A, 4825B, 4826A, 4826B**

1. Whenever possible, saddles should be installed after pipe pressure testing is completed.
2. Make sure you have proper type and size of saddle for pipe. Reference pipe diameter range, tap size and identification located on each double strap top.
3. Clean pipe surface thoroughly.
4. DO NOT use Vaseline®, plumber's grease, or any other petroleum based product on seals or o-rings.
5. Mount saddle on pipe with outlet facing desired direction.
6. **Tighten nuts evenly to a torque of 45-55 FOOT POUNDS.**
7. **Do not use on PVC pipe unless installation meets pipe manufacturers recommendations or approval. If used with PVC pipe - tighten nuts evenly to 30 foot pounds. Overtightening can cause failure of the pipe.**
8. After the corporation stop has been installed, recheck saddle torque and tighten if necessary.
9. A.Y. McDonald double strap saddles are designed to withstand water working pressure up to but not exceeding the working pressure rating of the pipe. **Use only on a cold water service.**
10. Saddle testing should be accomplished while services are exposed and prior to backfilling.

3210-380

8/11

## WARNING!



**WARNING:** It is unlawful in **CALIFORNIA & VERMONT** (effective 1/1/2010); **MARYLAND** (effective 1/1/2012); **LOUISIANA** (effective 1/1/2013) and the **UNITED STATES OF AMERICA** (effective 1/4/2014) to use any product in the installation or repair of any public water system or any plumbing in a facility or system that provides water for human consumption if the wetted surface area of the product has a weighted average lead content greater than 0.25%. This prohibition does not extend to service saddles used in California, Louisiana or under USA Public Law 111-380.



A.Y. McDonald Mfg. Co. is a leading manufacturer of Waterworks Brass, Plumbing Valves, Pumps and Water Systems, and High Pressure Gas Valves and Meter Bars. The Company has distinguished itself with a proud tradition of quality and reliability since its founding in 1856.

The mission of A.Y. McDonald Mfg. Co., in the words of our founder, is “to make good products and sell them honestly.” We, the stockholders and employees, accomplish this by extending the McDonald family culture through excellent customer service and by focusing on our customers’ needs.



**WARNING:** It is unlawful in CALIFORNIA & VERMONT (effective 1/1/2010); MARYLAND (effective 1/1/2012); LOUISIANA (effective 1/1/2013) and the UNITED STATES OF AMERICA (effective 1/4/2014) to use any product in the installation or repair of any public water system or any plumbing in a facility or system that provides water for human consumption if the wetted surface area of the product has a weighted average lead content greater than 0.25%. This prohibition does not extend to service saddles used in California, Louisiana or under USA Public Law 111-380.

