

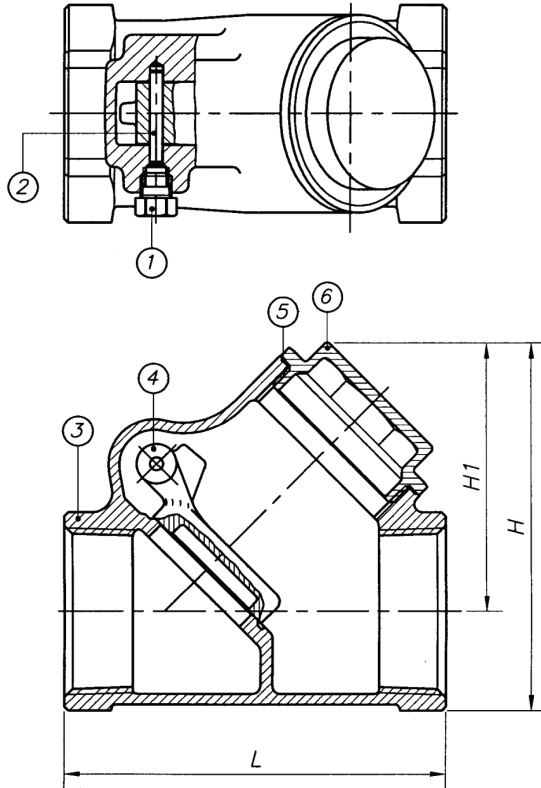
SUBMITTAL DATA SHEET

No-Lead Low Pressure Valves Y-Pattern Swing Check Valve - 72051T

FNPT X FNPT



A.Y. McDonald Mfg. Co. No-Lead Low Pressure Valves are constructed from heavy duty no-lead bronze and are recommended for residential and commercial applications and positive shut-off with various inlet configurations.



Dimensions

Size	L	H	H1
1/2"	2.20	2.60	1.60
3/4"	2.78	2.60	1.94
1"	3.15	2.95	2.13
1 1/4"	3.78	3.62	2.63
1 1/2"	4.33	4.21	3.07
2"	5.06	5.10	3.75

Materials

No.	Part	Material
1	Bolt	No-Lead Brass
2	Pin	No-Lead Brass
3	Body	No-Lead Bronze
4	Disc	No-Lead Bronze
5	Packing	Fiber "H"
6	Bonnet	No-Lead Bronze

SUBMITTAL INFORMATION

- Sizes: 1/2", 3/4", 1", 1 1/4", 1 1/2", 2", 2 1/2", & 3"
- Temperature Rating 180°F
- Pressure Rating 300 WOG - Non Shock
- 150 PSI Steam Rating 320°F
- Threads conform to ANSI B1.20.1
- Solder ends conform to ANSI B16.18
- Directional
- Complies with NSF/ANSI 372-2010 (1/2" - 2")

NO-LEAD: The weighted average of the wetted surface of this no-lead product contacted by consumable water contains less than one quarter of one percent (0.25%) lead.



A.Y. McDonald Mfg. Co.
P.O. Box 508
Dubuque, IA 52004-0508

Toll Free: 1-800-292-2737
Fax: 1-800-832-9296
Hours: 7:00 a.m. - 5:00 p.m., CST

sales@aymcdonald.com
www.aymcdonald.com

A.Y. McDonald considers the information on this assembly drawing correct when published. Item and option availability, including specifications, are subject to change without notice.

Submitted by: