



HL200 Thermostatic High-Low Valves

- Lead-Free Brass Design
- Reliable Liquid-Filled Thermostat with 10-Year Warranty
- Integral Strainer Checkstops on Inlets
- Adjustable Set Point within Temperature Range
- Accurate Temperature Control to within $\pm 3^{\circ}\text{F}$
- Positive Shutoff of Flow in the Event of Cold Supply Line Failure or Thermostat Failure
- Easy Installation and Serviceability
- Dirt and Lime Resistant
- Factory Assembled and Tested
- Universal Mounting Capability
- Dial Thermometer
- Cabinet Features:
 - 18 Gauge Body & Door
 - Left-Hand Hinge
 - Cylinder Lock
 - Inlet/Outlet Knock-Out Holes for Mounting Flexibility
 - Stainless Steel or Baked White Enamel Finishes
 - Surface-Mounted or Recessed Style with Flange

Valve Specifications

Maximum Operating Pressure

125 PSI (860 kPa)

Maximum Inlet Temperature

200° F (93° C)

Temperature Range

		Set Point
Std.	90° F (32° C) to 120° F (49° C)	110° F (43° C)
Low	70° F (21° C) to 100° F (38° C)	80° F (27° C)
High	110° F (43° C) to 140° F (60° C)	130° F (54° C)

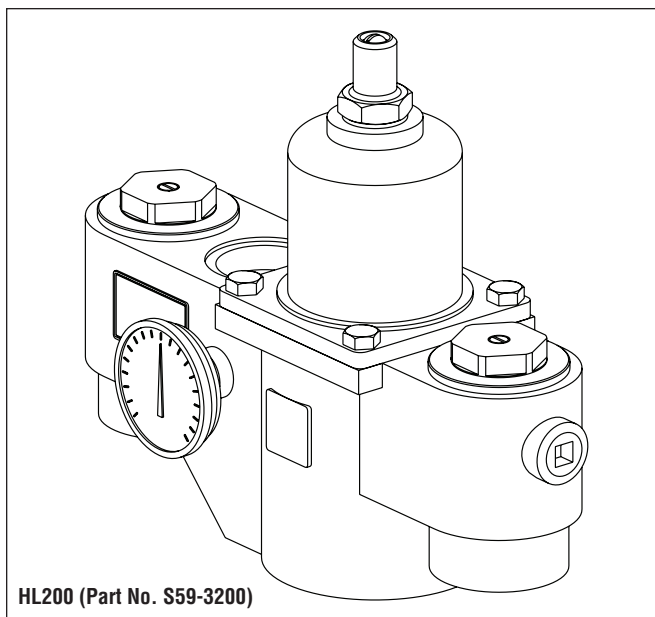
Flow Capacities – GPM (L/Min)

Model	Min† Flow	Pressure Drop – PSI (Bar)						
		5 (.5)	10 (1.0)	15 (1.5)	20 (2.0)	30 (2.5)	45 (3.0)	60 (4.0)
S59-3200	5.0 (19.0)	60.0 (282.5)	91.0 (405.0)	109.0 (499.5)	127.0 (580.0)	157.0 (651.0)	192.0 (715.5)	220.0 (831.0)

†Recirculation system only (See diagram on Page 2). When properly installed near the hot water source with a **continuously operating** recirculation pump, the valve will maintain set temperature with a .5 GPM (2.0 L/Min) draw from the plumbing system.

Code Compliance and Certifications

ASSE 1017 & cUPC certified.



HL200 (Part No. S59-3200)

Optional Selections

Finish

☐ C Chrome Plated

Thermostat

☐ L Low Range Thermostat
☐ H High Range Thermostat

Bracket

☐ B Wall Mounting Bracket

Piped Assembly

☐ P* Piped Assembly with Inlet and Outlet Shutoff
☐ N* Piped Assembly with Outlet Shutoff

Cabinets

☐ SS Surface Mount Stainless Steel
☐ RS Recessed Stainless Steel
☐ SE Surface Mount White Enamel
☐ RE Recessed White Enamel
☐ W Plexi-glass Window in Door

*Chrome plating not available



Lead Free

Certified to
NSF/ANSI 372



Standard product selections contained within this document are third party CERTIFIED to NSF/ANSI 372 meeting the Lead-Free content requirement. Any product configured with custom options will be COMPLIANT with NSF/ANSI 372 meeting the Lead-Free content requirement.

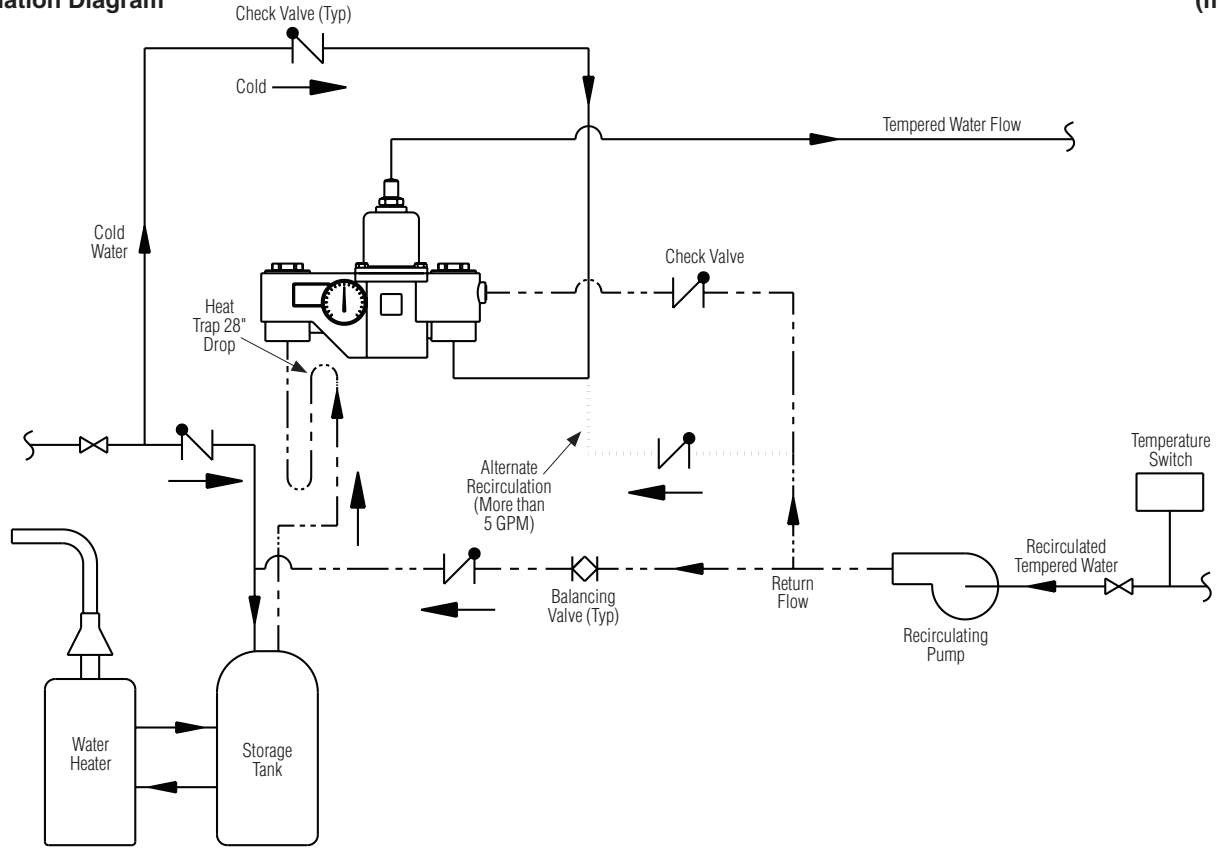
Engineer's Approval _____



HL200 Thermostatic High-Low Valves

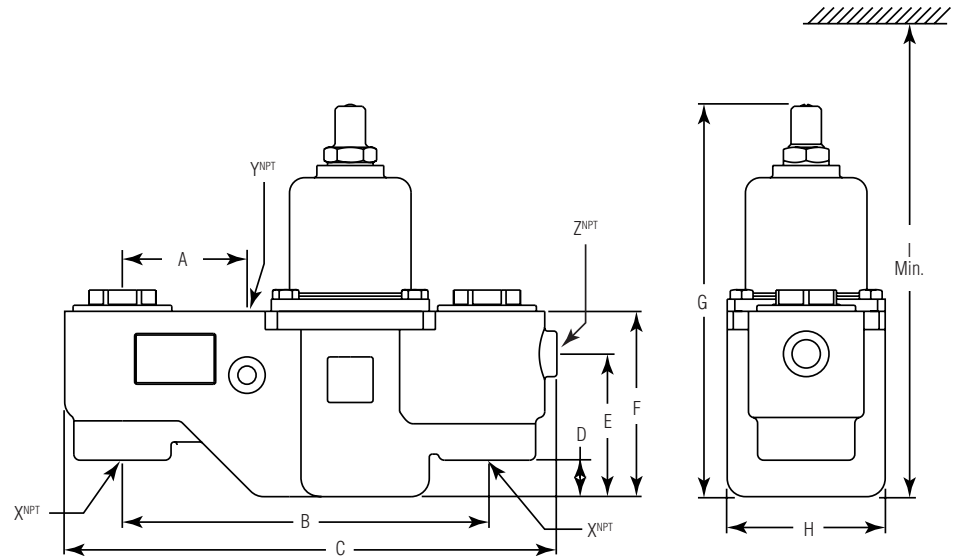
Recirculation Diagram

(mm)



Dimensions

Model	A	B	C	D	E	F	G	H	I	X ^{NPT}	Y ^{NPT}	Z ^{NPT}
S59-3200	3-1/2" (89)	12" (305)	16-1/4" (411)	1-1/2" (38)	4-3/4" (119)	6-1/8" (155)	13" (328)	5-1/4" (132)	19" (483)	2"	2"	3/4"



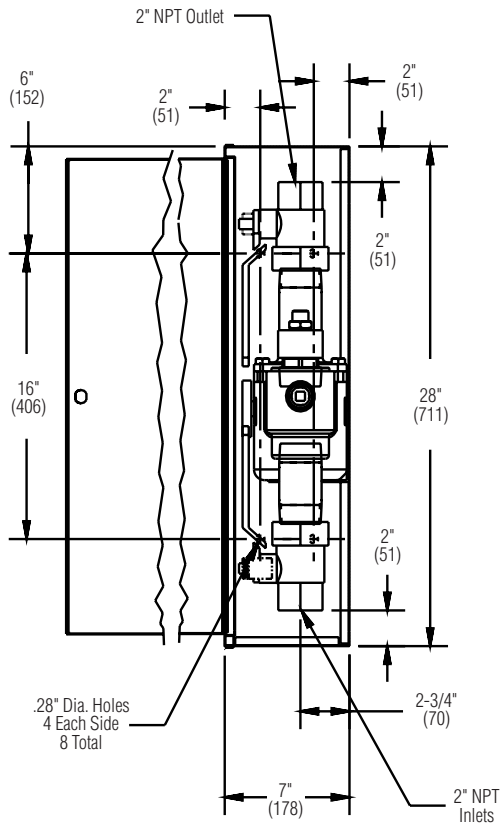


HL200 Thermostatic High-Low Valves

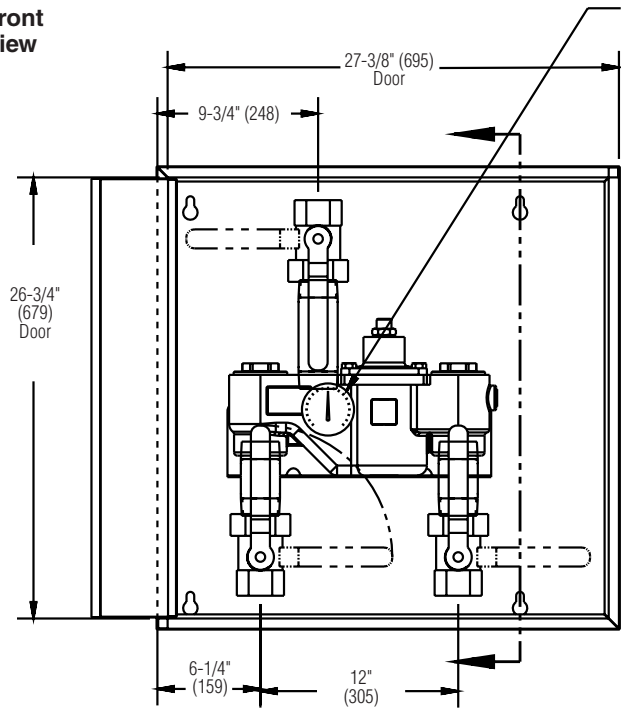
Dimensions — HL200 Surface-Mounted Cabinet

(mm)

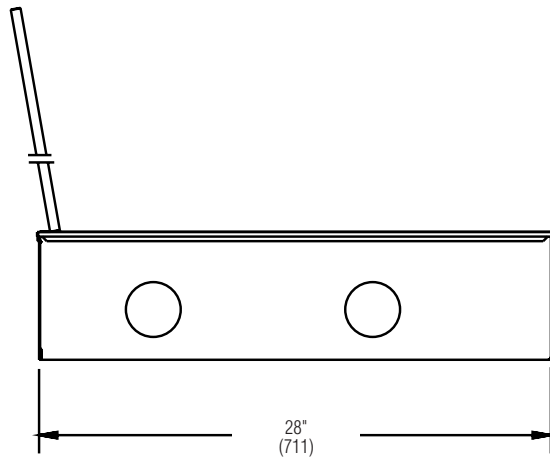
Side View



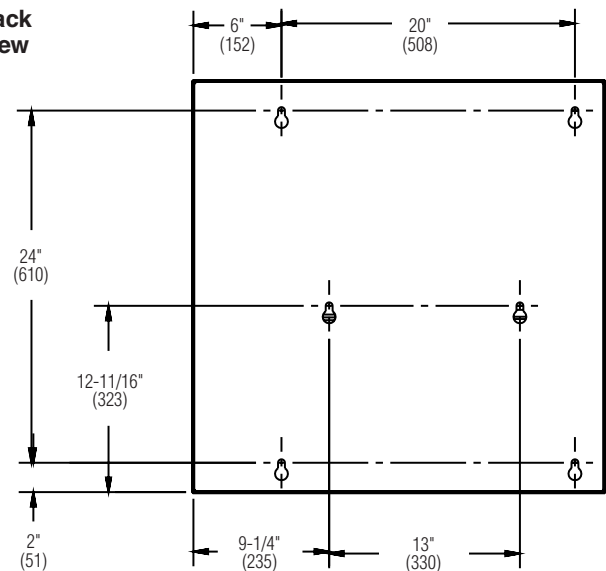
Front View



Bottom View



Back View





(mm)

