



Job Name:	
Job Location:	
Engineer:	
Contractor:	
Tag:	
PO#:	
Rep:	
Wholesale Dist.:	

DESCRIPTION

Apollo® 58 Series Balance Valve provides dependable hydronic system balance control utilizing corrosion resistant materials and Made in the USA construction.

FEATURES

- 1/2" or 3/4" Solder Connections
- 100% Factory Tested
- Easy Screw Slot Flow Adjustment
- Dezincification Resistant Cast Bronze Body
- **Made in USA**

PERFORMANCE RATING

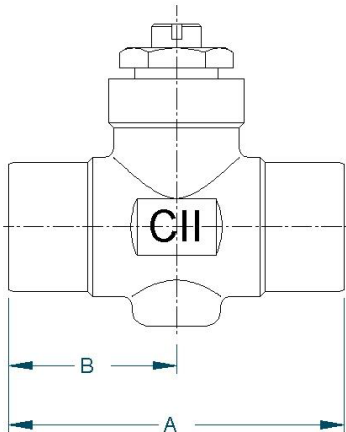
- Maximum Operating Pressure: 150 psig
- Maximum Operating Temperature: 250°F

STANDARD MATERIALS LIST

PACKING WASHER	11 Ga. Brass
O-RING	EPDM Rubber (1/2") Teflon w/Hypalon (3/4")
STEM	Brass, ASTM B16
GLAND SCREW	Brass, ASTM B16
VALVE BODY	Cast Bronze, ASTM B584

DIMENSIONS

MODEL NUMBER	PART NUMBER	SIZE	DIMENSIONS (IN)		CV	WT. (LB)	BOX QTY.
			A	B			
BAV12	58-003-01	1/2"	2.13	1.06	4	.30	100
BAV34	58-004-01	3/4"	2.75	1.37	14	.53	50



FLOW CURVE

