

"Apollo"[®]

PRODUCT CATALOG

**MARINE
PRODUCTS**



TABLE OF CONTENTS

DESCRIPTION	SIZES	PAGE
Sea Flange Valve (Full Flow)	3/4" - 4"	3
Sea Flange Valve (Economy)	3/4" & 1-1/4"	3
32-100 Ball Valve	1/4" - 2"	4
78-600/900 Bronze Valve with Center Drain	3/4" - 2"	4
77-100-10 Series Shut-Off Valve	1/4" - 2"	5
70-100-10 Series Ball Valve	1/4" - 4"	5
78-124-01 & 78-125-01A Series Bronze 5-Port Fuel Selector Ball Valve	1/2" % 3/4"	6
70-600-10 Series Three-Way Diverter Valve	3/4" - 2"	6
78-248, 250, 256, 438 Series Ball Type Fuel Shut-Off Valve	1/4" - 3/4"	7
61 Series Bronze Ball Cone Check Valve	1/4" - 2"	7
62 Series Stainless Steel Ball Cone Check Valve	3/8" - 2"	8
Bronze Flange Nut	1/2" - 2"	8
Thru-Hull Connection	1/2" - 2-1/2"	9
Thru-Hull Connection (Extra Long)	5" - 5-1/2" Max Hull	9
Thru-Hull Connection (Barbed)	1.06" - 1.88" Max Hull	9
One Piece Intake Strainer	2" - 3" Max Hull	10
Pipe-To-Hose Adapter	1/2" - 2"	10
90° Pipe-To-Hose Adapter	1/2" - 2"	10



APOLLO® SEA FLANGE VALVES



FULL FLOW

An 85-5-5-5 bronze ball type valve developed to replace plug and other types of sea cocks in the boating industry. Features like these make the full flow Apollo® Sea Flange your best choice for long-lasting performance and value.

FEATURES

- UL Listed
- All AYBA Recommended Materials
- All Bronze Wetted Metallic Components
- Large Flow Ports (Designated by "F" at the End of the Part #)**
- RPTFE Seats and Seals
- Chromium Plated Bronze Ball—Resists Damage from Marine Growth
- Easy On-Off Operation
- Winterizing Drain Plug
- No Thumb Screws to Create Seal
- Stainless Steel Lever and Nut
- Compact, Streamlined Efficient Design
- No Lubrication Required
- Bonding Screw Standard

DIMENSIONS

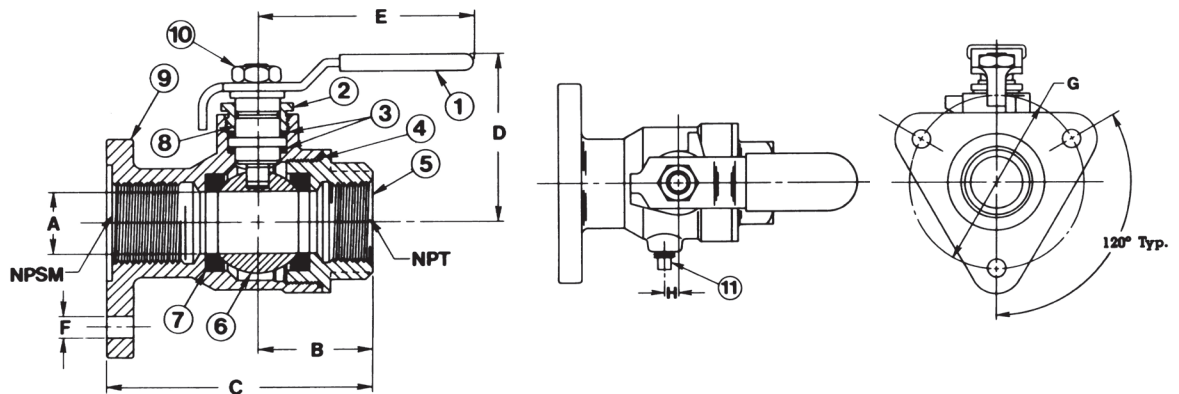
PART NUMBER	SIZE	DIMENSIONS (IN.)								WT. (LB.)
		A	B	C	D	E	F	G	H	
78-115-01F**	3/4"	0.75	1.56	3.62	2.16	4.78	0.34	3.12	0.06	2.70
78-118-01	1"	1.00	1.87	4.25	2.62	5.50	0.34	3.37	0.25	3.80
78-119-01	1-1/4"	1.25	2.15	4.81	2.81	5.50	0.34	3.62	0.37	5.75
78-116-01F**	1-1/2"	1.50	2.37	5.21	3.13	5.37	0.34	4.50	0.34	7.25
78-120-01	2"	2.00	2.84	6.25	4.68	8.00	0.34	5.00	0.87	12.90
78-117-01	2-1/2"	2.50	3.18	6.87	4.00	8.00	0.34	5.87	1.00	18.20
78-121-01A	3"	3.12	3.54	7.23	5.21	9.93	0.40	7.00	1.25	21.18
78-122-01A	4"	4.00	3.75	8.06	5.68	9.93	1.13	8.44	1.90	33.05

Contact Customer Service for availability on locking handle option

** Large flow ports

COMPONENTS

1	Lever & Grip
2	Gland Screw
3	Stem Seals
4	Body Seal, Except 3" - 4"
5	Retainer
6	Ball
7	Seat (2)
8	Stem
9	Body
10	Lever Nut
11	Plug



ECONOMY

Same great features and quality all-bronze construction as Full Flow Sea Flange valves, but with standard port design and lower cost.

DIMENSIONS

PART NUMBER	SIZE	DIMENSIONS (IN.)								WT. (LB.)
		A	B	C	D	E	F	G	H	
78-115-01	3/4"	0.68	1.50	3.50	2.18	4.87	0.34	3.12	0.06	2.32
78-116-01	1-1/2"	1.25	2.18	4.81	2.87	5.50	0.34	4.50	0.18	6.30

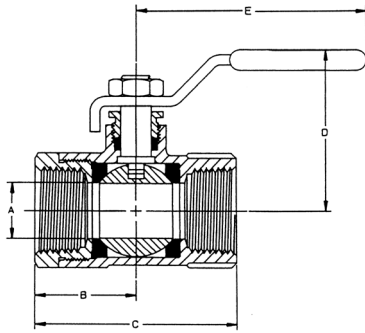
Contact Customer Service for availability on locking handle option

NOTE: Apollo® Marine Valves used in applications where marine growth can become intrusive should be actuated to the fully closed and fully open positions as often as once per month and at minimum once every other month. Such cycling of these valves can reduce the effort needed to open and close the valves while also helping to clear marine growth buildup on components.



32-100 SERIES

REGULAR PORT, THREADED END, BRONZE BALL VALVE



NPT threaded ball valve rated to 400 psig CWP, non-shock and 125 psig for saturated steam. Blowout-proof stem design with adjustable packing gland.

FEATURES

- ASTM B584 Bronze
- PTFE Seats and MPTFE Stuffing Box Ring
- **Made in USA**

OPTIONS

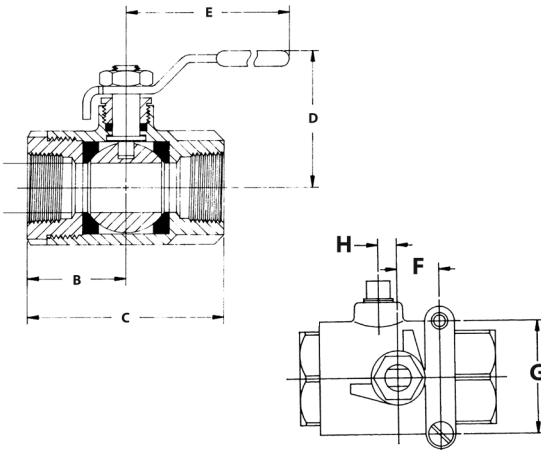
- (-04) 2-1/4" Stem Extension
- (-07) CS Tee Handle
- (-15) Round Handle
- (-27) Locking Handle

DIMENSIONS

MODEL NUMBER	SIZE	DIMENSIONS (IN.)				
		A	B	C	D	E
32-101-01	1/4"	0.37	0.80	1.60	1.65	2.87
32-102-01	3/8"	0.37	0.80	1.60	1.65	2.87
32-103-01	1/2"	0.40	1.00	2.00	1.68	2.87
32-104-01	3/4"	0.65	1.20	2.41	1.90	3.87
32-105-01	1"	0.75	1.55	3.09	2.18	4.87
32-106-01	1-1/4"	1.00	1.72	3.44	2.53	5.50
32-107-01	1-1/2"	1.12	1.93	3.87	2.69	5.50
32-108-01	2"	1.50	2.17	4.37	2.94	5.50

78-600/900 SERIES

BRONZE BALL VALVE WITH CENTER DRAIN



Center tap drain allows winterization of the valve. Bonding screw allows valve to be connected to the vessel's bonding system.

FEATURES

- Bronze Body
- Chromium Plated Brass Ball
- Rptfe Seats and stuffing Box Ring
- Blowout-Proof Stem Design
- Stainless Steel Lever and Nut
- Mounting Pads
- Tapered Pipe Threads

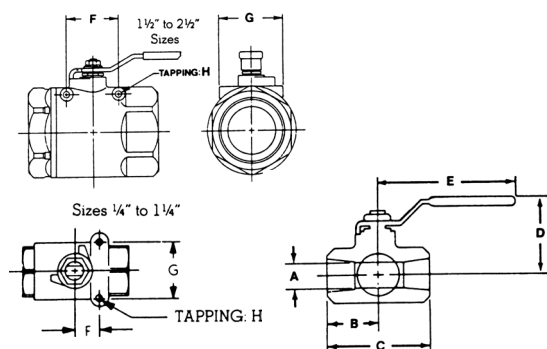
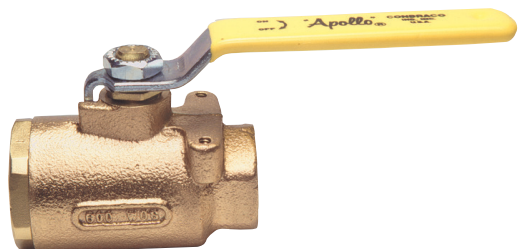
DIMENSIONS

PART NUMBER	SIZE	DIMENSIONS (IN.)								WT. (LB.)
		A	B	C	D	E	F	G	H	
78-664-01	3/4"	0.68	1.50	3.00	2.12	4.87	0.87	1.37	0.17	1.53
78-665-01	1"	0.87	1.68	3.37	2.25	4.87	0.87	1.37	0.21	1.86
78-666-01	1-1/4"	1.00	2.00	4.00	2.62	5.50	0.93	1.50	0.28	3.39
78-667-01	1-1/2"	1.25	2.18	4.37	3.05	8.00	0.93	1.50	0.40	4.68
78-962-01	2"	1.50	2.34	4.69	3.24	8.00	0.93	1.50	0.45	5.72



77-100-10 SERIES

FULL PORT SHUT-OFF VALVE



The bronze full port Apollo® with mounting pads for easy, secure installation and quick, convenient bonding. Use in any valve application where full flow is required.

FEATURES

- Bronze Body
- Chromium Plated Brass Ball
- RPTFE Seats and Stuffing Box Ring
- Blowout-Proof Stem Design
- Stainless Steel Lever and Nut

OPTIONS

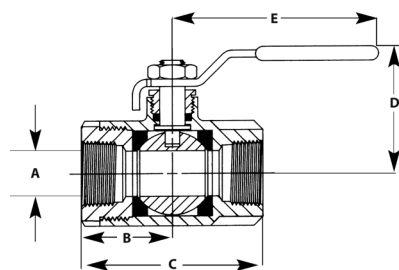
- 316 Stainless Steel Ball and Stem

DIMENSIONS

PART NUMBER	SIZE (IN.)	DIMENSIONS (IN.)							
		A	B	C	D	E	F	G	H
77-101-01	1/4"	0.43	1.09	2.18	1.77	3.87	0.50	1.12	10-24 NC
77-102-01	3/8"	0.50	1.09	2.18	1.77	3.87	0.50	1.12	10-24 NC
77-103-01	1/2"	0.50	1.09	2.18	1.77	3.87	0.50	1.12	10-24 NC
77-104-01	3/4"	0.81	1.56	3.12	2.12	4.87	0.87	1.37	10-24 NC
77-105-01	1"	1.00	1.81	3.62	2.62	5.50	0.93	1.50	1/4-20 NC
77-106-01	1-1/4"	1.25	2.12	4.25	2.87	5.50	0.93	1.50	1/4-20 NC
77-107-01	1-1/2"	1.50	2.37	4.75	3.34	8.00	2.08	3.06	5/16-24 NF
77-108-01	2"	2.00	2.65	5.37	3.71	8.00	2.41	3.52	5/16-24 NF
77-109-01	2-1/2"	2.50	3.25	6.50	4.12	8.00	2.75	3.37	1/4-20 NC

70-100-10 SERIES

BALL VALVE



The mainstay of our valve line. Dependable, competitive and available with stainless steel lever and nut.

FEATURES

- Bronze Body
- Chromium Plated Brass Ball
- RPTFE Seats and Stuffing Box Ring
- Blowout-Proof Stem Design
- Stainless Steel Lever and Nut

OPTIONS

- 316 Stainless Steel Ball and Stem

DIMENSIONS

PART NUMBER	SIZE (IN.)	DIMENSIONS (IN.)					WT. (LB.)
		A	B	C	D	E	
70-101-01	1/4"	0.37	1.03	2.06	1.75	3.87	0.60
70-102-01	3/8"	0.37	1.03	2.06	1.75	3.87	0.56
70-103-01	1/2"	0.50	1.12	2.25	1.75	3.87	0.63
70-104-01	3/4"	0.68	1.50	3.00	2.12	4.87	1.39
70-105-01	1"	0.87	1.68	3.37	2.25	4.87	1.72
70-106-01	1-1/4"	1.00	2.00	4.00	2.62	5.50	3.26
70-107-01	1-1/2"	1.25	2.18	4.37	3.06	8.00	4.61
70-108-01	2"	1.50	2.34	4.68	3.25	8.00	6.06
70-109-01	2-1/2"	2.00	3.12	6.25	3.72	8.00	13.96
70-100-01	3"	2.50	3.37	6.75	4.12	8.00	18.60
70-10A-01	4"	3.12	3.68	7.37	5.25	10.00	25.50



78-124-01 & 78-125-01A SERIES

BRONZE 5-PORT FUEL SELECTOR BALL VALVE



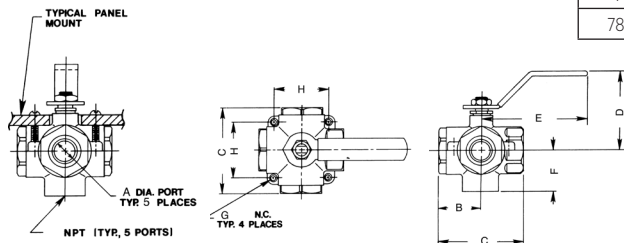
Unique ball design allows for higher flow capacities. Perfect for tank selection on larger vessels. Five port construction allows access to four tanks using only one valve.

FEATURES

- Five NPT Connections
- Bronze Ball Valve with Stainless Steel Lever and Nut
- RPTFE Stem Packing (Virgin Seats)
- Stem Packing Adjustable for Wear
- 50 psig Pressure Rating
- Operation: Four Selected Inlets Feed One Common Outlet - Pointer on Handle Indicates the Selected Inlet
- Non-Lubricated
- Easy Mounting Design

DIMENSIONS

PART NUMBER	SIZE	DIMENSIONS (IN.)								WT. (LB.)
		A	B	C	D	E	F	G	H	
78-124-01	1/2"	0.50	1.26	2.52	2.27	3.53	1.12	10-24	1.40	1.06
78-125-01A	3/4"	0.75	1.53	3.12	2.87	3.87	1.53	1/4-20	1.98	2.64



70-600-10 SERIES

THREE-WAY DIVERTER VALVE



Fuel tank selection, oil transfer, and water tank selection are only a few of the uses for this versatile valve.

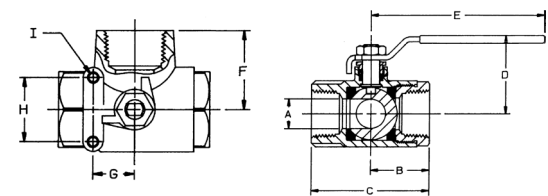
FEATURES

- Bronze Body
- Chromium Plated Bronze Ball
- RPTFE Seats and Stuffing Box Ring
- Stainless Steel Lever and Nut
- Mounting/Bonding Pads
- Blowout-Proof Stem Design
- 400 psig Service Rating
- Adjustable Packing Gland

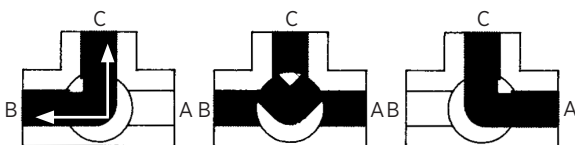
DIMENSIONS

PART NUMBER	SIZE	DIMENSIONS (IN.)									WT. (LB.)
		A	B	C	D	E	F	G	H	I	
70-603-10	1/2"	0.50	1.09	2.25	1.75	3.87	1.18	0.87	1.37	10-24	.76
70-604-10	3/4"	0.68	1.50	3.00	2.12	4.87	1.62	0.87	1.37	10-24	2.31
70-605-10	1"	0.81	1.59	3.18	2.25	4.87	1.71	0.87	1.37	10-24	2.04
70-606-10	1-1/4"	1.00	1.97	3.95	2.69	5.50	2.01	0.93	1.50	1/4-20	3.85
70-607-10	1-1/2"	1.25	2.21	4.40	2.87	5.50	2.38	0.94	1.50	1/4-20	5.22
70-608-10	2"	1.50	2.34	4.69	3.00	5.50	2.50	0.94	1.50	1/4-20	6.20

Also available in all Stainless Steel.
Specify 76-600 Series.



FLOW PATTERN



Lever Position

Lever Position

Lever Position

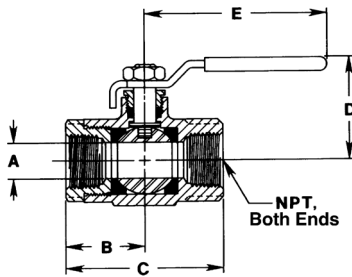
NOTE: Open port pressure must exceed closed port pressure.



78-248, 250, 256, 438 SERIES BALL TYPE FUEL SHUT-OFF VALVE



(OPTIONAL TEE HANDLE ILLUSTRATED)



Quality bronze valve features "mounting ears" for quick easy installation, and positive mounting. Can also be used for bonding.

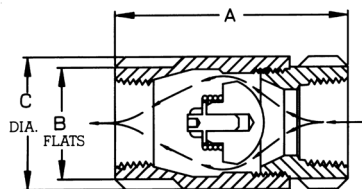
FEATURES

- Surface Mounted
- 400 psig Service Rating
- RPTFE Seats and Seals
- All Wetted Metallic Parts are Brass or Cast Bronze
- Fast 90° On-Off Turn
- Tested 100 psig Air Under Water
- Stainless Steel Lever and Nut
- Optional with Stainless Steel Ball and Stem

DIMENSIONS

PART NUMBER	SIZE	DIMENSIONS (IN.)					WT (LBS.)
		A	B	C	D	E	
78-248-10	1/4"	0.43	1.12	2.25	1.78	3.87	.68
78-250-10	3/8"	0.50	1.12	2.25	1.78	3.87	.68
78-256-10	1/2"	0.50	1.12	2.25	1.78	3.87	.65
78-438-10	3/4"	0.68	1.50	3.00	2.12	4.87	1.40

61 SERIES BRONZE BALL CONE CHECK VALVE



61-100 SHOWN

Prevents reverse flow with minimum change in flow velocity.

FEATURES

- Tight Shut Off
- No Radial Alignment Necessary
- Straight Through and Streamlined for Minimum Change in Velocity
- Ball-Cone™ Check is Spring Loaded for Fast Seating Action (Constructed of RPTFE)
- Not Recommended for Reciprocating Pumps and Similar Applications Conducive to Repetitious Vibrations
- Optional Light Spring
- Soft Seat Design - Specify 61-500 Series
- Solder Connections - Specify 61-600 Series

DIMENSIONS

PART NUMBER	PART NUMBER	SIZE	DIMENSIONS (IN.)			APPROX. OPEN PRESSURE	WT.
			A	B	C		
61-101-01	61-501-01	1/4"	2-1/16	11/8	11/8	1/2 PSIG	.38
61-102-01	61-502-01	3/8"	2-1/8	11/8	11/8	1/2 PSIG	.38
61-103-01	61-503-01	1/2"	2-5/8	11/8	11/8	1/2 PSIG	.38
61-104-01	61-504-01	3/4"	2-7/8	1 3/8	1 1/2	1/2 PSIG	.75
61-105-01	61-505-01	1"	3-1/2	1 3/4	1 15/16	1/2 PSIG	1.45
61-106-01	61-506-01	1-1/4"	4-3/16	2 1/8	2 3/8	1/2 PSIG	2.75
61-107-01	61-507-01	1-1/2"	4-15/16	2 1/2	2 13/16	1/2 PSIG	3.94
61-108-01	61-508-01	2"	6	3	3 11/16	1/2 PSIG	6.30



CHECK VALVE & THRU-HULL CONNECTIONS AND COMPONENTS

62 SERIES

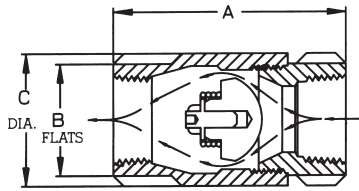
STAINLESS STEEL BALL CONE CHECK VALVE



Prevents reverse flow with minimum change in flow velocity.

FEATURES

- Tight Shut Off
- No Radial Alignment Necessary
- Straight Through and Streamlined for Minimum Change in Velocity
- Ball-Cone™ Check is Spring-Loaded for Fast Seating Action (Constructed of RPTFE)
- All Wetted Metal Parts are 316 Stainless Steel
- Not Recommended for Reciprocating Pumps and Similar Applications Conducive to Repetitious Vibrations
- Optional Light Spring
- Soft Seat Design - Specify 62-500 Series



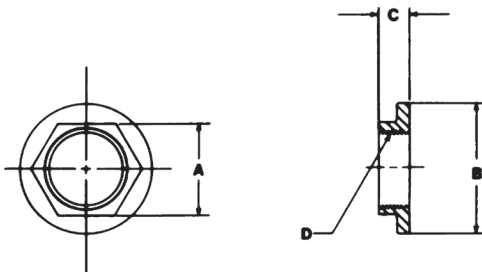
62-100 SHOWN

DIMENSIONS

PART NUMBER	PART NUMBER	SIZE	DIMENSIONS (IN.)			APPROX. OPEN PRESSURE	WT.
			A	B	C		
62-102-01	62-502-01	3/8"	2-1/8	11/8	11/8	1/2 PSIG	.38
62-103-01	62-503-01	1/2"	2-5/8	11/8	11/8	1/2 PSIG	.38
62-104-01	62-504-01	3/4"	2-7/8	13/8	11/2	1/2 PSIG	.75
62-105-01	62-505-01	1"	3-1/2	13/4	115/16	1/2 PSIG	1.45
62-106-01	-	1-1/4"	4-3/16	21/8	2 3/8	1/2 PSIG	2.75
62-107-01	-	1-1/2"	4-15/16	21/2	2 13/16	1/2 PSIG	3.94
62-108-01	-	2"	6	3	3 11/16	1/2 PSIG	6.30

BRONZE FLANGE NUTS

PLAIN BRONZE FINISH ONLY



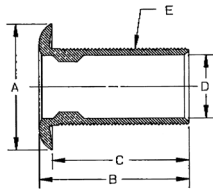
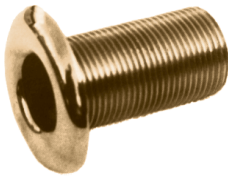
Apollo® offers a wide selection of thru-hull connections and components, available in a wide range of sizes. Designed and built with large surface to distribute load, for longer service life and more reliable connections; 85-5-5-5 bronze.

DIMENSIONS

PART NUMBER	SIZE	DIMENSIONS (IN.)				WT/100
		A	B	C	D	
65-007-65	1/2"	1.00	1.50	0.312	1/2" NPSM	7
65-006-38	3/4"	1.25	1.84	0.406	3/4" NPSM	12.5
65-006-39	1"	1.56	2.15	0.468	1" NPSM	20
65-006-40	1-1/4"	1.90	2.59	0.50	1 1/4" NPSM	29
65-006-41	1-1/2"	2.16	2.90	0.50	1 1/2" NPSM	40
65-006-42	2"	2.59	3.31	0.593	2" NPSM	52



THRU-HULL CONNECTION



(EXCLUDES 1/2, 3/4")

For connections below the waterline; 85-5-5-5 bronze.

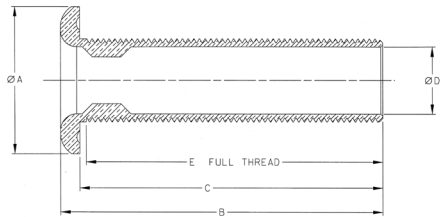
DIMENSIONS

PART NUMBER	SIZE	DIMENSIONS (IN.)					WT/100*
		A	B	C	D	E	
65-**7-63	1/2"	1.70	2.5	2.26	0.469	1/2" NPSM	33.5
65-**7-50	3/4"	1.93	2.46	2.25	0.75	3/4" NPSM	35
65-**7-51	1"	2.31	2.75	2.5	1.03	1" NPSM	47.5
65-**7-52	1-1/4"	2.81	3.28	3	1.313	1-1/4" NPSM	84
65-**7-53	1-1/2"	3.06	3.62	3.31	1.53	1-1/2" NPSM	107.5
65-**7-54	2"	3.62	3.81	3.5	2.00	2" NPSM	142
65-**7-55	2-1/2"	4.31	3.93	3.56	2.43	2-1/2" NPSM	216.5

** = Specify "BF" For Bronze Fitting Only. Specify "BN" For Bronze Fitting With Nut.

* = Weights are listed without nuts

THRU-HULL CONNECTION EXTRA LONG



(EXCLUDES 3/4")

Extra long to allow for thru-hull connections through the transom or through the bottom of foam filled hulls; 85-5-5-5 bronze.

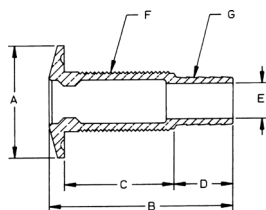
DIMENSIONS

PART NUMBER	MAX. HULL	DIMENSIONS (IN.)					PIPE SIZE	WT/100*
		A	B	C	D	E		
65-**8-03	5.25	1.88	5.94	5.63	0.75	5.51	3/4" NPSM	70.5
65-**8-04	5.19	2.25	5.88	5.53	1.00	5.41	1" NPSM	95
65-**8-05	5	2.75	5.88	5.50	1.25	5.38	1-1/4" NPSM	159.5
65-**8-06	5	3.06	5.88	5.50	1.50	5.38	1-1/2" NPSM	188.5
65-**8-07	5	3.69	6.03	5.63	2.00	5.51	2" NPSM	209.5
65-**8-08	5	4.44	5.94	5.50	2.50	5.38	2-1/2" NPSM	314

** = Specify "BF" For Bronze Fitting Only. Specify "BN" For Bronze Fitting With Nut.

* = Weights are listed without nuts

THRU-HULL CONNECTIONS BARBED



(EXCLUDES 1/2", 3/4")

Recommended for use above the waterline; 85-5-5-5 bronze.

DIMENSIONS

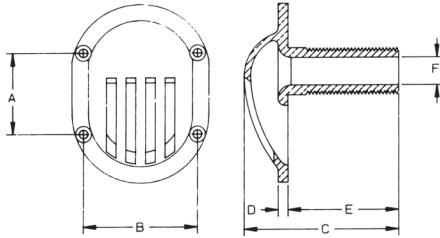
PART NUMBER	MAX. HULL	DIMENSIONS (IN.)					PIPE SIZE F	HOSE SIZE G	WT/100*
		A	B	C	D	E			
65-**7-97	1.06	1.56	3.00	1.5	1.25	0.44	1/2" NPSM	0.63	28.5
65-**7-98	1.63	1.88	3.69	2.06	1.38	0.56	3/4" NPSM	0.75	40.5
65-**7-99	1.75	2.42	3.88	2.25	1.31	0.75	1" NPSM	1.00	74
65-**7-01	1.88	2.81	4.25	2.44	1.47	1.00	1-1/4" NPSM	1.25	106.5
65-**7-02	1.88	3.06	4.25	2.38	1.50	1.25	1-1/2" NPSM	1.50	123.5
65-**7-03	1.88	2.81	4.25	2.44	1.44	0.87	1-1/8" NPSM	1.13	104

** = Specify "BF" For Bronze Fitting Only. Specify "BN" For Bronze Fitting With Nut.

* = Weights are listed without nuts



ONE PIECE INTAKE STRAINER



(EXCLUDES 1/2", 3/4")

Designed for long life, easy installation; 85-5-5-5 bronze.

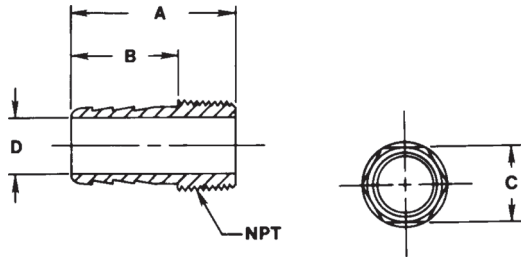
DIMENSIONS

PART NUMBER	MAX. HULL	STRAINER DIM.	DIMENSIONS (IN.)						PIPE SIZE	WT/100*
			A	B	C	D	E	F		
65-**8-09	2.00	2.6 X 3.5	1.56	2.19	3.00	0.19	2.13	0.53	1/2" NPSM	68
65-**8-10	2.19	3 X 4	1.94	2.47	3.63	0.19	2.56	0.75	3/4" NPSM	93.4
65-**8-11	2.50	3 X 4	1.88	2.50	3.88	0.19	2.91	1.00	1" NPSM	104
65-**8-12	3.00	3-1/4" X 4-1/4"	1.75	2.81	4.50	0.19	3.50	1.25	1-1/4" NPSM	158

** = Specify "BF" For Bronze Fitting Only. Specify "BN" For Bronze Fitting With Nut.

* = Weights are listed without nuts

PIPE-TO-HOSE ADAPTER

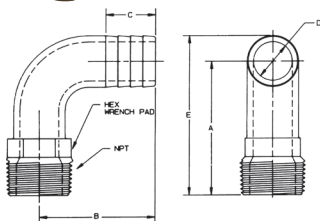


Features single-piece construction. Cast-in wrench flats make installation easier; 85-5-5-5 bronze.

DIMENSIONS

PART NUMBER	NPT SIZE	HOSE I.D.	DIMENSIONS (IN.)				WT.
			A	B	C	D	
65-007-56	1/2"	1/2" or 5/8"	2.58	1.63	0.87	0.40	.18
65-007-51	3/4"	3/4"	1.93	1.00	0.87	0.51	.23
65-007-52	1"	1"	2.25	1.13	1.12	0.80	.35
65-007-53	1-1/4"	1-1/4"	2.69	1.44	1.37	1.03	.61
65-007-54	1-1/2"	1-1/2"	2.63	1.44	1.62	1.28	.81
65-007-55	2"	2"	2.88	1.63	2.12	1.75	1.30

90° PIPE-TO-HOSE ADAPTER



One-piece adapter simplifies right angle connections. Cast with wrench flats for easy installation; 85-5-5-5 bronze.

DIMENSIONS

PART NUMBER	NPT SIZE	HOSE SIZE	HEX	DIMENSIONS (IN.)					WT.
				A	B	C	D	E	
65-907-50	1/2"	1/2" and 5/8"	5/8"	1.75	1.91	1.28	0.28	2.08	.35
65-907-51	3/4"	3/4"	7/8"	2.50	2.25	1.13	0.54	2.92	.41
65-907-52	1"	1"	1 1/8"	2.72	2.35	1.00	0.80	3.24	.67
65-907-53	1-1/4"	1-1/4"	1 3/8"	3.11	2.66	1.25	1.03	3.75	1.06
65-907-54	1-1/2"	1-1/2"	1 5/8"	3.44	3.11	1.25	1.28	4.20	1.30
65-907-55	2"	2"	2 1/8"	3.99	3.99	1.50	1.63	5.00	2.60



Conbraco Industries, Inc. warrants, to its initial purchaser only, that its products which are delivered to this initial purchaser will be of the kind described in the order or price list and will be free of defects in workmanship or material for a period of FIVE years from the date of delivery to you, our initial purchaser. This warranty applies to Apollo brand product with "Made in the USA" markings only.

Should any failure to conform to this warranty appear within FIVE years after the date of the initial delivery to our initial purchaser, Conbraco will, upon written notification thereof and substantiation that the goods have been stored, installed, maintained and operated in accordance with Conbraco's recommendations and standard industry practice, correct such defects by suitable repair or replacement at Conbraco's own expense.

APOLLO INTERNATIONAL PRODUCTS: Conbraco Industries, Inc. warrants its International products, to its initial purchaser only, that its international products which are delivered to this initial purchaser will be of the kind described in the order or price list and will be free of defects in workmanship or material for a period of TWO years from the date of delivery to you, our initial purchaser.

THIS WARRANTY IS EXCLUSIVE AND IS IN LIEU OF ANY IMPLIED WARRANTY OF MERCHANTABILITY, FITNESS FOR A PARTICULAR PURPOSE OR OTHER WARRANTY OF QUALITY, WHETHER EXPRESSED OR IMPLIED, EXCEPT THE WARRANTY OF TITLE AND AGAINST PATENT INFRINGEMENT. Correction of non-conformities, in the manner and for the period of time provided above, shall constitute fulfillment of all liabilities of Conbraco to our initial purchaser, with respect to the goods, whether based on contract, negligence, strict tort or otherwise. It is the intention of Conbraco Industries, Inc. that no warranty of any kind, whether expressed or implied shall pass through our initial purchaser to any other person or corporation.

LIMITATION OF LIABILITY: Conbraco Industries, inc. SHALL NOT UNDER ANY CIRCUMSTANCES BE LIABLE FOR SPECIAL OR CONSEQUENTIAL DAMAGES SUCH AS, BUT NOT LIMITED TO, DAMAGES OR TO LOSS OF OTHER PROPERTY OR EQUIPMENT, LOSS OF PROFITS OR REVENUE, COST OF CAPITAL, COST OF PURCHASED OR REPLACEMENT GOODS, OR CLAIMS OF CUSTOMERS OF OUR INITIAL PURCHASER. THE REMEDIES OF OUR INITIAL PURCHASER, AND ALL OTHERS, SET FORTH HEREIN, ARE EXCLUSIVE, AND THE LIABILITY OF CONBRACO WITH RESPECT TO SAME SHALL NOT, EXCEPT AS EXPRESSLY PROVIDED HEREIN, EXCEED THE PRICE OF THE GOODS UPON WHICH SUCH LIABILITY IS BASED.

* It is the end user's responsibility to confirm that items intended for use satisfy local codes and standards.

TERMS AND CONDITIONS OF SALE

- Payment: 2% 10th prox. Net 30 days.
- All prices F.O.B. shipping point with freight allowed on shipments of 750 pounds and/or \$5,000 net minimum to all shipping points within the United States excluding Alaska and Hawaii. No freight allowed on Air Freight or Parcel Post shipments. Claims for shortages must be made within 10 days of receipt of material. Our responsibility ends when a receipt is furnished us by the carrier.
- No Invoice Rendered For Less Than \$50.00.
- No freight will be allowed on Air Freight, Air Express, Parcel Post or U.P.S. shipments.
- All Conbraco products may be combined to make sufficient weight for full freight allowance.
- Phone order quoted prices are subject to correction. Prices and designs are subject to change without notice.
- Orders for material or special design or specification are made to customer's order and are not subject to cancellation or return.
- All goods returned to us will not be accepted unless a full explanation has been made and our written authorized permission obtained in advance. All goods returned – if accepted – will be credited at invoice price, less 30% for service and rehandling charges, plus shipping expenses.
- We reserve the right to adjust orders to box quantities.

"Apollo"®

PRODUCT CATALOG

PHONE: (704) 841-6000

FAX: (704) 841-6020

Regional Management List
now available online at:

<http://conbra.co/rmlist>

MACA9000 08/18

Customer Service (704) 841-6000
www.apollovalves.com

