



## **RENTAL, CONSTRUCTION, & MUNICIPALITIES PRODUCTS**



# APACHE

Serving The Construction Industry Since 1963



*We're committed to you!*

Dear Construction Products User:

Apache Inc. is privileged to have you as a customer. You are one of the reasons that we are the industry's premier supplier of contractor and rental products. Apache takes great pride in stocking the items you need, shipping them to you on-time, and introducing new and innovative products.

We value you as our business partner and look forward to serving you now and in the future.

A handwritten signature in black ink, appearing to read 'T. Pientok'.

Tom Pientok  
President and CEO

[www.apache-inc.com](http://www.apache-inc.com)



*Apache is proud to be a participating distributor in the NAHAD Listed Members Program. As a NAHAD Listed Member, Apache utilizes and follows the association hose assembly guidelines for the Fabrication of Industrial Hose Products and the Fabrication of Hydraulic Hose Products. These hose assembly guidelines offer an important base-line performance measure to ensure safer and higher quality assemblies. Another reason why... Apache is the premier provider of rental, construction, and municipalities products to the market.*

**AIR HOSE / ACCESSORIES****AIR HOSE**

200# / 300# EPDM Premium Rubber .....	4,7
2500 Mainliner .....	7
300# Industrial PVC .....	3
300# Premium PVC .....	3,4,6
500# All Purpose.....	8
Air Hose Reels .....	6
Air Tank PVC .....	5
Jackhammer Hose .....	2
Push-On Hose & Couplings .....	8
Roofing / Framing Hose Reinforced Polyurethane .....	4
Self Storing Nylon / Polyurethane.....	5
Whip Hose .....	2
Wire Braid "Bull" Hose .....	3,8

**AIR ACCESSORIES**

Boss Interlocking Clamp, Couplings, Spuds .....	13,14
Brass Hex Nipples and Menders .....	11
In-Line Lubricators.....	11
Quick Couplers .....	9
Swivels / Manifolds .....	10
Universal Couplings.....	12
Whip Check Safety Cables .....	11

**CLEANING PRODUCTS / ACCESSORIES****MUNICIPAL / INDUSTRIAL / COMMERCIAL**

Crush Proof Plastic Vacuum Cleaning Hose .....	51
Municipal Sewer Cleaning Hose .....	51
Steam Hose .....	46

**PRESSURE WASHER HOSE / ACCESSORIES / CHEMICALS**

Hose Assemblies .....	46
Pressure Washer Chemicals .....	51
Quick Disconnects / Gauges / Hose Reels.....	50
Spray Nozzles / Quick Disconnect Spray Tips .....	48-49
Spray Guns / Wands .....	47

**HYDRAULIC HOSE / ACCESSORIES****HOSE ASSEMBLIES & BULK / SERVICES**

Gates Bulk Hose .....	44-45
Gates Quick-Pick and AIM Program.....	44
Grease Gun Extension Hose.....	43
Quick Disconnects / Products & Services .....	43

**MATERIAL HANDLING HOSE / ACCESSORIES****DUCTING HOSE**

Lawn / Leaf Vacuum / Sandblast Dust Control.....	38
Manhole Blower / CW-GP Air .....	38

**MATERIAL HANDLING HOSE**

Concrete Pump / Hot Air Blower .....	41
Dredge Sleeve / Sand Suction .....	40
Dry Cargo / Sandblast Hose & Couplings .....	41-42
Lightweight Corrugated / Bulk Commodity .....	39
Plaster / Grout & Guniting Hose.....	40
Pure Gum Boot / Sleeve .....	39
Rubber Elephant Trunk.....	40

**SPECIAL APPLICATION HOSE / ACCESSORIES**

Curb Pump Hose .....	54
Fuel Transfer Hose / Manual Fuel Nozzles.....	53
Hot Tar & Asphalt / Braided Metal Hose.....	55
LPG .....	52
Twin Line Welding / Airless Paint Spray Hose .....	53

**WATER HOSE / ACCESSORIES****SUCTION**

EPDM Rubber Suction and Discharge .....	19
Poly / Rubber Contractor's Suction .....	17
PVC Water Suction G .....	15
PVC Sludge Suction Low-Temp.....	16
Reinforced PVC Suction .....	18
Tiger Tail Suction .....	20
Transfer Pump Kits 2" .....	20
Trash Pump Kits .....	20

**DISCHARGE**

Fire Hose / Fog Nozzles / Hydrant Adapters .....	26-27
Lay Flat PVC Discharge .....	21-23
Mill Washdown Discharge .....	25
Rubber Water Discharge .....	24

**WATER HOSE**

Industrial Water Garden .....	27
-------------------------------	----

**WATER HOSE ACCESSORIES / MISCELLANEOUS**

Ball and Socket Couplings .....	31
Band-It® Clamps / Buckles / Tools .....	32-33
Cam and Groove Couplings .....	29-30
Pin Lug Couplings / Nipples / Menders.....	28
ProGrip Couplings .....	32
Strainers / Foot Valves / Gauges.....	36-37
T-Bolt / Double Bolt / Worm Gear Clamps .....	34-35



## JACKHAMMER AIR HOSE



## ASSEMBLIES

good

Apache P/N	Description	Color	W.P.	Wt.Ea.
10239595	3/4" I.D. x 50' cpld.	Red	250#	18.7#
<b>Applications:</b> General purpose hose for various rental, construction, and industrial applications. Hose has limited oil resistance.				
<b>Construction:</b> EPDM cover and tube reinforced with polyester yarn.				
<b>Assembly:</b> Includes Universal couplings with safety clips attached, and two Band-It smooth I.D. clamps on each end.				



better

Apache P/N	Description	Color	W.P.	Wt.Ea.
98108859	3/4" I.D. x 50' cpld.	Red Mainliner	300#	20.0#
<b>Applications:</b> General service air hose for rental, industrial, and construction applications where an oil resistant tube is required to lubricate air tools.				
<b>Construction:</b> Medium oil resistant tube, reinforced with polyester yarn. Cover has limited oil resistance and good abrasion resistance.				
<b>Assembly:</b> Includes Universal couplings with safety clips attached, and two Band-It smooth I.D. clamps on each end.				



best

Apache P/N	Description	Color	W.P.	Wt.Ea.
98108865	3/4" I.D. x 50' cpld.	Yellow	300#	19.0#
<b>Applications:</b> Heavy duty air hose for rental, industrial, and construction applications where an oil resistant tube is required to lubricate air tools. Hose has an abrasion resistant cover.				
<b>Construction:</b> With its unique double braid reinforcement and crimp-on couplings this contractors #1 choice assembly will outperform standard jackhammer hose (three to four times).				
<b>Assembly:</b> Includes universal 2-lug (crimp-on) couplings with safety clips for superior coupling retention.				
<b>Note:</b> Hoses can be private branded to help reduce your risk of loss due to hard to identify hose or theft.				
<b>Contact Apache customer service for private branding and color options 1-800-332-3243.</b>				



ultimate

Apache P/N	I.D. x Length	Color	W.P.	Wt.Ea.
98118450	3/4" x 50' wire braid	Yellow	1000#	28.0#
98118455	1" x 50' wire braid	Yellow	800#	41.0#
<b>Application:</b> Extra heavy duty, high pressure hose for use on construction, industrial, and pneumatic mining applications.				
<b>Construction:</b> Wire braided hose with an oil resistant tube and abrasion resistant cover.				
<b>Assembly:</b> Includes universal 2-lug couplings with 2-bolt clamps, also available with boss male or female ground joint couplings.				

## WHIP HOSE ASSEMBLY (YELLOW)



Apache P/N	I.D. x Length	W.P.	Wt.Ea.
97108070	1/2" x 10' - 7/8" - 24	500#	3.5.#
97108071	1/2" x 10' - 1/2" MPT	500#	3.5.#
97108072	1/2" x 10' - 3/8" MPT	500#	3.5.#
<b>Application:</b> Use this short hose assembly as a flexible connector between the supply hose and the tool (example: connecting a chipping hammer).			
<b>Assemblies:</b> Include a Universal hose end x bent stem swivel with two Band-It smooth I.D. clamps on each end.			
<b>Benefits:</b> Rugged hose with a high abrasion resistant cover. 1/2" I.D. hose makes tools easier to handle, especially in confined spaces.			



## WIRE BRAID “BULL” HOSE



### ASSEMBLIES

Apache P/N	I.D. x Length		Color	W.P.	Wt.Ea.
98118470	2" x 50'	cpd. M x M	Yellow	500#	98.0#
98118472	2" x 50'	cpd. M x F	Yellow	500#	99.0#
98118474	2" x 50'	cpd. F x F	Yellow	500#	101.0#

**Applications:** A premium grade air hose specifically designed for the severest operating conditions in quarries, mines, and heavy construction work.

**Construction:** The tube is a specially compounded oil resistant black nitrile.

Reinforcement is high tensile braided wire.

The cover is yellow, abrasion resistant SBR rubber.

**Assemblies:** Include ground joint couplings with 4-bolt clamps.

**Fittings:** Interlocking clamp type.

**Std. Lengths:** 50' and 100'.

## 300# INDUSTRIAL PVC AIR HOSE



### ASSEMBLIES

good

Apache P/N	I.D. x Length	Color	W.P.	Wt.Ea.
10130330	3/8" x 50'	Yellow	300#	5.5#

**Applications:** For use with air compressors, staplers, nailers, and pneumatic tools.

**Assemblies:** Coupled with 1/4" brass MNPT on each end.

**Features:** Oil and abrasion resistant tube/cover, flexible/kink resistant construction, excellent temperature range, and a high visibility "safety yellow" cover.

**Packaged:** Skin packed coil with point of purchase color label for convenient retail sale.

## 300# PREMIUM PVC AIR HOSE



### ASSEMBLIES

better

Apache P/N	I.D. x Length	Color	W.P.	Wt.Ea.
98108760	1/4" x 25'	Blue	300#	2.3#
98108765	1/4" x 50'	Blue	300#	4.3#
98108775	3/8" x 25'	Red	300#	3.3#
98108780	3/8" x 50'	Red	300#	6.1#
98108781	3/8" x 100'	Red	300#	9.8#

**Applications:** For use with air compressors, staplers, nailers, and pneumatic tools.

**Construction:** Premium PVC air hose assemblies feature oil and abrasion resistant tube and cover, flexible/kink proof construction, and excellent temperature range.

**Assemblies:** Coupled with 1/4" brass MNPT. Hoses include pvc bend restrictor, for prolonged service life.

**Packaged:** Skin packed coil with point of purchase color label for convenient retail sale.

**300# PREMIUM PVC AIR HOSE****ASSEMBLIES****better**

Apache P/N	I.D. x Length	Color	W.P.	Wt.Ea.
98108792	1/2" x 50' cpld. 3/8 MNPT	Orange	300#	7.0#

**Applications:** For use with air compressors, staplers, nailers, and pneumatic tools.

**Construction:** Premium PVC air hose assemblies feature oil and abrasion resistant tube and cover, flexible/kink resistant construction, and excellent temperature range.

**Assemblies:** Coupled with 3/8" brass MNPT and no bend restrictors.

**Packaged:** Skin packed coil with point of purchase color label for convenient retail sale.

**300# EPDM AIR HOSE – PREMIUM RUBBER****ASSEMBLIES****best**

Apache P/N	I.D. x Length	Color	W.P.	Wt.Ea.
98108938	1/4" x 25'	Red	300#	4.4#
98108940	1/4" x 50'	Red	300#	8.2#
98108942	3/8" x 25'	Red	300#	5.2#
98108943	3/8" x 50'	Red	300#	10.0#
98108944	3/8" x 100'	Red	300#	19.8#
98108952	1/2" x 25' cpld. 3/8" MNPT	Red	300#	5.0#
98108953	1/2" x 50' cpld. 3/8" MNPT	Red	300#	10.0#

**Applications:** For use with air compressors, staplers, nailers, and pneumatic tools.

**Assemblies:** 1/4" & 3/8" I.D. premium EPDM air hose assemblies are coupled with 1/4" brass MNPT on each end. 1/2" I.D. hose is coupled with 3/8" brass MNPT. 3/8" & 1/2" I.D. hose includes bend restrictors on each end to prolong service life.

**Features:** Excellent temperature range. Heat, weather, and abrasion resistant, stays flexible at low temperatures.

**Packaged:** Neatly coiled with point of purchase disk or upc label for convenient retail sale.

**REINFORCED POLYURETHANE ROOFING/FRAMING HOSE****ASSEMBLIES****ultimate**

Apache P/N	I.D. x Length	Color	W.P.	Wt.Ea.
15026302	1/4" x 50'	Trans. Blue	200#	2.0#
15026303	1/4" x 100'	Trans. Blue	200#	4.3#
15026306	3/8" x 60'	Trans. Red	200#	2.3#

**Applications:** For use with air compressors, staplers, nailers, and pneumatic tools. Lightweight and superior flexibility make this the perfect hose for roofing, framing, and trim work.

**Assemblies:** Hose is coupled 1/4" MPT swivel w/bend restrictors on each end.

**Features:** Two spiral fabric reinforcement with UV stabilization for longer outdoor service. It is heat, oil, weather, and abrasion resistant, stays flexible at sub zero temperatures and has an excellent temperature range.

**Packaged:** Skin packed coil with point of purchase color label for convenient retail sale.

## PVC AIR TANK HOSE



### ASSEMBLIES

Apache P/N	I.D. x Length	Hose Color	Cpld.	W.P.	Wt.Ea.
98108747	1/4" x 4'	Blue	1/4" M x M	300#	.40#
98108750	1/4" x 6'	Blue	1/4" M x M	300#	.60#
98108755	1/4" x 15'	Blue	1/4" M x M	300#	1.00#
98108753	1/4" x 4'	Blue	1/4" M x BTC	300#	.60#
98108764	3/8" x 10'	Red	1/4" M x M	300#	.80#

**Applications:** Replacement hose for portable air tanks.

**Assemblies:** Coupled male x male or male x ball inflation chuck.

**Packaged:** Coil with label.

## SELF STORING AIR HOSE



### ASSEMBLIES

#### NYLON-w/2 MALE SWIVELS

**good**

Apache P/N	I.D. x Length	W.P.	Wt.Ea.
15025018	1/4" x 12'	185#	.30#
15025995	1/4" x 25'	185#	.50#
15026021	3/8" x 25'	165#	.90#

**Assemblies:** Self retracting hoses are coupled with male swivel couplings.

**Benefits:** When not in use hoses automatically recoil into their storage area. Eliminates the hazard of hoses sprawled across work area. Can be used in both horizontal and vertical applications.



#### REINFORCED POLYURETHANE-w/2 MALE SWIVELS

**best**

Apache P/N	I.D. x Length	Color	W.P.	Wt.Ea.
15026100	1/4" x 25'	Blue	200#	.90#
15026106	3/8" x 25'	Red	200#	2.25#

**Assemblies:** Reinforced polyurethane assemblies have the same superior features of the polyurethane self coiling assemblies plus a higher working pressure.

## AIR HOSE REELS



## AUTO REWIND STEEL REEL

Apache P/N	I.D. x Length	W.P. Hose	Wt.Ea.
99023961	Rubber Hose, Single Bracket - 3/8" x 50'	300#	47.40#
99023964	Rubber Hose, Double Bracket - 3/8" x 65'	300#	47.40#
99023965	Rubber Hose, Double Bracket - 1/2" x 50'	300#	47.40#

**Features:** Reel is constructed from heavy duty steel and has an auto-rewind mechanism that automatically locks hose at desired length. Reel includes a 1/4" FNPT swivel inlet connection, one stationary mounting bracket with a hose guide arm, and a (300#) 3/8" x 50' rubber air hose. This abrasion resistant hose is coupled 1/4" MNPT and includes a hose stop.



## AUTO REWIND ENCLOSED CASE REEL

Apache P/N	I.D. x Length	W.P. Hose	Wt.Ea.
99023441	Polyurethane Hose - 3/8" x 50'	300#	16.00#

**Features:** Heavy-duty polypropylene case for corrosion and weather resistance. Auto-rewind mechanism automatically locks hose at desired working length. 1/4" NPT solid brass inlet swivel, 180° swivel steel mounting bracket and safety clip, (reel can be locked to bracket or removed to prevent theft), hose stop, Teflon® tape, and 3' lead-in/connection hose are standard.

**Includes:** 3/8" x 50' 300psi oil, chemical and abrasion resistant reinforced polyurethane hose with 1/4" MNPT coupling and bend restrictor.



## HAND CRANK STEEL REEL

Apache P/N	I.D. x Length	W.P. Hose	Wt.Ea.
99023955	Rubber Hose - 3/8" x 50'	300#	17.60#
99023957	Rubber Hose - 3/8" x 100'	300#	28.00#

**Features:** Reel is constructed from heavy duty steel and has a spring tension brake for smooth operation. Reel includes a 1/4" FNPT reel inlet, one stationary mounting bracket, a bolt on hand crank, and a (300#) 3/8" x 50'/100' rubber air hose. This abrasion resistant hose is coupled 1/4" MNPT.



## AUTO REWIND TWIN LINE WELDING HOSE REEL

Apache P/N	I.D. x Length	W.P. Hose	Wt.Ea.
99023975	Grade R 1/4" x 50'	200#	57.00#

**Features:** Heavy gauge all-steel reel assembly with corrosion-resistant powder coat finish. Spring powered auto-rewind mechanism locks hose at desired working length. Solid brass inlet swivel with double O-ring seals prevents leaking. Adjustable arm guide with four direction non-snap rollers allows wall, ceiling, floor, bench or truck mounting.

**Includes:** Reel connection hose and adjustable hose stop.

## 300# PREMIUM PVC AIR HOSE



## BULK HOSE

Apache P/N	I.D. x O.D.	Hose Color	W.P.	Wt.Ft.
10130005	1/4" x .46"	Blue	300#	.08#
10130010	3/8" x .595"	Red	300#	.11#
10130013	1/2" x .750"	Orange	300#	.14#

**Applications:** For use with air compressors, staplers, nailers, and pneumatic tools.

**Construction:** Premium PVC air hose assemblies feature oil and abrasion resistant tube and cover, flexible/kink resistant construction, and excellent temperature range.

**Std. Bulk Length:** 300'



**AG 200/300 EPDM TUBE & COVER (RED)****BULK HOSE****AG 200****good**

Apache P/N	I.D. x O.D.	Reel Length	W.P.	Wt.100'
10028300	1/4" x 1/2"	500'	200#	8.7#
10028320	3/8" x 11/16"	500'	200#	15.8#
10028330	1/2" x 13/16"	500'	200#	19.7#
10028340	5/8" x 15/16"	500'	200#	24.0#
10028350	3/4" x 1-1/8"	500'	200#	34.3#
10028360	1" x 1-25/64"	500'	200#	45.0#

**AG 300****good**

Apache P/N	I.D. x O.D.	Reel Length	W.P.	Wt.100'
10035600	1/4" x 9/16"	500'	300#	15.7#
10035620	3/8" x 23/32"	500'	300#	18.0#
10035630	1/2" x 27/32"	500'	300#	25.0#
10035640	5/8" x 1"	500'	300#	29.9#
10035650	3/4" x 1-5/32"	500'	300#	41.2#
10035660	1" x 1-25/64"	500'	300#	53.6#

**3000 SERIES****good**

Apache P/N	I.D. x O.D.	Reel Length	W.P.	Wt.100'
10035007	1-1/4" x 1-25/32"	250'	150#	78.5#
10035503	1-1/2" x 2-1/32"	200'	150#	91.5#
10035506	2" x 2-1/2"	300'	150#	108.1#

**Applications:** General purpose hose for various rental, construction, and industrial applications.

Hose has limited oil resistance.

**Construction:** EPDM cover and tube reinforced with polyester yarn.

**Recommended Fittings:** Universal quick couplings, long or short shank, insert type, one time or reattachable.

**2500 AIR HOSE "MAINLINER" OIL RESISTANT TUBE (RED)****BULK HOSE****better**

Apache P/N	I.D. x O.D.	Reel Length	W.P.	Wt.100'
10019508	1/4" x 1/2"	700'	200#	8.5#
10020506	3/8" x 11/16"	700'	200#	15.3#
10021006	1/2" x 13/16"	700'	200#	19.1#
10022010	3/4" x 1-5/32"	700'	200#	36.7#
10022002	1" x 1-3/8"	700'	200#	42.2#
10022509	1/4" x 5/8"	700'	300#	15.3#
10023009	3/8" x 23/32"	700'	300#	18.0#
10023505	1/2" x 7/8"	700'	300#	25.0#
10024005	3/4" x 1-5/32"	700'	300#	37.5#
10024501	1" x 1-7/16"	700'	300#	50.5#
10024609	1-1/4" x 1-25/32"	500'	200#	80.5#
10024633	1-1/2" x 2-1/32"	400'	200#	93.6#

**Application:** General service air hose for rental, industrial, and construction applications where an oil resistant tube is required to lubricate air tools.

**Construction:** Medium oil resistant tube, reinforced with polyester yarn. Cover has limited oil resistance and good abrasion resistance.

**WARNING: Not recommended for handling fuels.**

## 500# ALL PURPOSE



## BULK HOSE

**best**

Apache P/N	I.D. x O.D.	Color	Reel Length	W.P.	Wt. 100'
10041150	3/8" x 3/4"	Yellow	600'	500#	21.0#
10041152	1/2" x 29/32"	Yellow	600'	500#	29.0#
10041156	3/4" x 1-3/16"	Yellow	600'	500#	36.0#
10041158	1" x 1-1/2"	Yellow	600'	500#	51.0#
10032116	1-1/4" x 1-13/16"	Yellow	400'	500#	74.0#
10032118	1-1/2" x 2-1/16"	Yellow	300'	500#	86.0#
10032120	2" x 2-5/8"	Yellow	200'	500#	119.0#

**Applications:** For use as a heavy duty multi-purpose hose in agriculture, factory, foundry, mining, shipbuilding, quarry, and many other applications. MSHA approved.

**Construction:** Nitrile tube reinforced with 4-spiral polyester cord, with a nitrile/PVC blend cover. This hose features a unique, spiral-polyester wrap construction that maximizes flexibility and strength. It's available in all popular sizes, and each size offers a constant 500# P.S.I. working pressure with a true 4:1 burst safety factor and is highly oil resistant.

## WIRE BRAID HOSE



## BULK HOSE

**ultimate**

Apache P/N	I.D. x O.D.	Color	W.P.	Wt. 100'
11003506	1/2" x 1"	Yellow	1000#	35.0#
11003508	3/4" x 1-1/4"	Yellow	1000#	50.0#
11004008	1" x 1-1/2"	Yellow	800#	75.0#
11004504	1-1/4" x 1-3/4"	Yellow	600#	83.0#
11005500	1-1/2" x 2-3/16"	Yellow	500#	125.0#
11006000	2" x 2-3/4"	Yellow	500#	160.0#
11006507	2-1/2" x 3-1/4"	Yellow	500#	189.0#
11007007	3" x 3-3/4"	Yellow	500#	252.0#
11007503	4" x 4-3/4"	Yellow	400#	400.0#

**Application:** A premium grade air hose specifically designed for the severest operating conditions in quarries, mines, and heavy construction work.

**Construction:** Tube is a specially compounded oil resistant black nitrile. Reinforcement is high tensile wire. Cover is yellow abrasion resistant SBR rubber.

**Recommended Fittings:** Interlocking clamp type. **Std. Bulk Lengths:** 50' and 100'.

## PUSH-ON HOSE



EASILY MAKE OR REPAIR YOUR OWN HOSE ASSEMBLIES WITHOUT TOOLS OR CLAMPS, JUST PUSH THE FITTINGS INTO THE HOSE.

## PUSH-ON HOSE / 100' BOX - BULK HOSE (BLACK)

Apache P/N	I.D. x O.D.	W.P.	Wt. Ft.
39001300	1/4" x 1/2"	250#	.09#
39001350	3/8" x 5/8"	250#	.12#
39001400	1/2" x 3/4"	250#	.16#

**Applications:** Ideal for construction, industrial, warehouse, and other applications where petroleum based oils, water, glycol anti-freeze, hot lubricating oils, and air are used.

**Features:** Highest quality oil resistant tube / cover. Hose is flexible, kink and abrasion resistant.

Unique spiral reinforcement "locks" onto fitting barb.

Available by special order in Blue, Gray, Red, Green, and Yellow.

**WARNING: Not recommended for unleaded gasoline or diesel fuels. Use with push-on fittings only.**

## BRASS PUSH-ON FITTINGS

Apache P/N	Description	Wt. Ea.
44065002	1/4" MNPT x 1/4" H.B.	.04#
44065010	1/4" MNPT x 3/8" H.B.	.05#
44065012	3/8" MNPT x 1/4" H.B.	.06#
44065015	3/8" MNPT x 3/8" H.B.	.07#
44065025	1/2" MNPT x 3/8" H.B.	.12#
44066009	1/2" MNPT x 1/2" H.B.	.12#

## BRASS PUSH-ON MENDERS

Apache P/N	Description	Wt. Ea.
44066138	1/4" H.B. Brass	.03#
44066140	3/8" H.B. Brass	.05#
44066142	1/2" H.B. Brass	.07#

## AIR HOSE QUICK COUPLERS BRASS OR STEEL



### COUPLER w/FEMALE PIPE THREAD

Apache P/N	Description	Body Size	Wt.Ea.
51040072	1/4" FNPT	1/4"	.22#
51040074	3/8" FNPT	1/4"	.25#
51040088	1/4" FNPT	3/8"	.31#
51040090	3/8" FNPT	3/8"	.34#
51040092	1/2" FNPT	3/8"	.35#



### COUPLER w/MALE PIPE THREAD

Apache P/N	Description	Body Size	Wt.Ea.
51040066	1/4" MNPT	1/4"	.22#
51040068	3/8" MNPT	1/4"	.22#
51040082	1/4" MNPT	3/8"	.31#
51040084	3/8" MNPT	3/8"	.28#
51040086	1/2" MNPT	3/8"	.34#



### COUPLER w/HOSE BARB

Apache P/N	Description	Body Size	Wt.Ea.
51040076	1/4" H.B.	1/4"	.22#
51040080	3/8" H.B.	1/4"	.25#
51040094	1/4" H.B.	3/8"	.29#
51040096	3/8" H.B.	3/8"	.30#
51040098	1/2" H.B.	3/8"	.31#



### PLUGS w/FEMALE PIPE THREAD

Apache P/N	Description	Body Size	Wt.Ea.
51040018	1/4" FNPT	1/4"	.06#
51040020	3/8" FNPT	1/4"	.07#
51040034	1/4" FNPT	3/8"	.07#
51040036	3/8" FNPT	3/8"	.13#
51040038	1/2" FNPT	3/8"	.14#



### PLUGS w/MALE PIPE THREAD

Apache P/N	Description	Body Size	Wt.Ea.
51040012	1/4" MNPT	1/4"	.06#
51040014	3/8" MNPT	1/4"	.08#
51040028	1/4" MNPT	3/8"	.09#
51040030	3/8" MNPT	3/8"	.09#
51040032	1/2" MNPT	3/8"	.15#



### PLUGS w/HOSE BARB

Apache P/N	Description	Body Size	Wt.Ea.
51040022	1/4" H.B.	1/4"	.05#
51040026	3/8" H.B.	1/4"	.06#
51040040	1/4" H.B.	3/8"	.06#
51040042	3/8" H.B.	3/8"	.07#
51040044	1/2" H.B.	3/8"	.08#

## AIR HOSE ACCESSORIES



## SWIVEL CONNECTORS - AIR TOOL/HOSE SWIVEL

Apache P/N	Description	Wt.Ea.
99019500	1/4" M x F	.20#
99019501	3/8" M x F	.42#
99019502	1/2" M x F	.78#

**Application:** Two way 360° swivel connection between tool and supply hose, so hose can drop directly to the floor. Makes air tool easier to handle in confined spaces and helps eliminate operator fatigue.

**Construction:** Aluminum, rated to 150 PSI.

**Inlet/Outlet:** Female x Male NPT.



## SWIVEL CONNECTORS - IN-LINE SWIVEL

Apache P/N	Description	Wt.Ea.
99019498	1/4" M x F	.07#
99019505	3/8" M x F	.12#
99019507	1/2" M x F	.50#
44022010	3/4" M x F	.63#

**Application:** Creates free turning swivel connection between tool and supply hose. Swivel relieves the hose of twist and torsional strain which always occurs when hose is worked from a rigid outlet.

**Construction:** 1/4" and 3/8" are brass rated to 150 PSI, 1/2" and 3/4" are heavy duty steel rated to 250 PSI.

**Inlet/Outlet:** Female x Male NPT.

**WARNING:** For air service only.



## TIRE INFLATOR CHUCK

Apache P/N	Description	Wt.Ea.
43126490-C	1/4" FNPT Tire Inflator Chuck	.10#

**Application:** For direct connection to live air only.

**Construction:** Has a built-in shut-off valve (will not work on inflator gauges) and a ball foot chuck design that is rated to 300 PSI max., 1/4 female NPT threads.



## AIR MANIFOLDS - FLAT HEX BRASS MANIFOLD

Apache P/N	Inlet/Outlet		Wt.Ea.
99019800	1/4" x 1/4"	Flat Hex Brass Manifold	.33#
99019801	3/8" x 1/4"	Flat Hex Brass Manifold	.40#
99019802	3/8" x 3/8"	Flat Hex Brass Manifold	.45#

**Applications:** Manifold is designed to lay flat, safely distributing up to three hose lines to work area from a single supply source. Design helps to reduce hose clutter and danger of tripping.

**Construction:** Solid brass

**Inlet/Outlet:** Female NPT.



## 3 IN 1 ALUMINUM MANIFOLD

Apache P/N	Inlet/Outlet		Wt.Ea.
99019510	1/4" x 1/4"	3 In 1 Manifold	.12#
99019512-C	3/8" x 1/4"	3 In 1 Manifold	.15#
99019513	1/2" x 1/4"	3 In 1 Manifold	.14#

**Applications:** Supplies up to three air operated tools from a single supply line. Attach to hose, workbench, or overhead. Permits multi-use of air by more than one person or mounting of three different styles of couplers.

**Inlet/Outlet:** Female NPT.



## BRASS HEX NIPPLES / MENDERS



### BRASS HEX NIPPLE

Apache P/N	Description	Wt.Ea.
44060202	1/4" x 1/4"	.04#
44060204	3/8" x 3/8"	.07#
44060207	1/2" x 1/2"	.12#

**Applications:** Used in fluid or air applications to connect two female NPT couplings together.

**Construction:** Solid brass, hex head for tightening with a wrench.



### BRASS HOSE MENDER

Apache P/N	Description	Wt.Ea.
43043680	1/4"	.02#
43043681	3/8"	.04#
43043682	1/2"	.07#

**Applications:** Commonly used in air/water applications requiring the connection of two hoses to extend the length or to repair a damaged section. To complete connection of hose to the corrugated shanks (which grip the tube firmly) clamps are required.

**Construction:** Solid brass.

## IN LINE LUBRICATORS



### IN LINE LUBRICATORS

Apache P/N	NPT Size(Oil Capacity)	Wt.Ea.
43128652	1/2" (1.4 oz.)	.82#
43128654	3/4" (3.7 oz.)	1.63#
43128656	3/4" (11 oz.)	2.38#
43128658	1" (16 oz.)	4.53#

**Applications:** Designed to protect portable or stationary air tools by efficiently lubricating the tool mechanism each time the air tool is operated. Installation is recommended within 25' of the tool to be lubricated.

## WHIP CHECK SAFETY CABLE



### HOSE TO HOSE SERVICE

Apache P/N	Cable Size	Hose I.D.	Length	Wt.Ea.
43012010	1/8"	1/2" - 1-1/4"	20-1/4"	.10#
43012012	1/4"	1-1/2" - 3"	38-1/4"	.94#

### HOSE TO TOOL SERVICE

Apache P/N	Cable Size	Hose I.D.	Length	Wt.Ea.
43012006	1/8"	1/2" - 1-1/4"	20-1/4"	.22#
43012007	1/4"	1-1/2" - 3"	38.0"	1.08#

**Applications:** These strong steel cables prevent the hose from whipping in case of accidental separation of the coupling or clamp device.

**Features:** Spring loaded loops in cable ends open to pass over the couplings for a firm grip on the hose. Highly resistant to rust and corrosion, easy to install and remove, no tools needed.

## UNIVERSAL COUPLINGS



## HOSE END

Apache P/N	I.D.	Lugs	Wt.Ea.
43000004	3/8"	2	.44#
43000500	1/2"	2	.48#
43001507	3/4"	2	.56#
43002007	1"	2	.64#
43002503	1-1/4"	4	1.49#
43003003	1-1/2"	4	1.73#
43003518	2"	4	2.15#

## FEMALE NPT ENDS

Apache P/N	I.D.	Lugs	Wt.Ea.
43006509	3/8"	2	.32#
43007009	1/2"	2	.44#
43007505	3/4"	2	.48#
43008005	1"	2	.52#
43008205	1-1/4"	4	1.30#
43008206	1-1/2"	4	1.30#
43008207	2"	4	1.60#

## MALE NPT ENDS

Apache P/N	I.D.	Lugs	Wt.Ea.
43004506	3/8"	2	.40#
43005006	1/2"	2	.44#
43005502	3/4"	2	.48#
43006002	1"	2	.60#

**Applications:** For pneumatic lines and spray service. Recommended where fast frequent connections must be made. Quarter turn makes leakproof seal under pressure or vacuum. Rust-proof malleable iron.

**Construction:** Malleable Iron with rubber gasket.

**WARNING: 2 & 4-lug Universal couplings are for air/water applications only, Do not use for steam service!**

## ACCESSORIES

Apache P/N	Description	Wt.Ea.
43012509	2-lug Gaskets: (bag of 50)	.62#
43013009	4-Lug Gaskets: (sold individually)	.02#

**Applications:** Rubber replacement gaskets for two/four lug "Universal" style couplings, easy to install.

Apache P/N	Description	Wt.Ea.
43011502	Universal 2-Lug Blank End	.52#

**Applications:** Blank "Universal" end blocks off two lug connection on hose or supply source.

**Construction:** Malleable Iron w/ rubber gasket.

Apache P/N	Description	Wt.Ea.
43012002	Universal 2-Lug Triple Connection	1.00#

**Applications:** Triple connection allows two hoses to be run from one supply line.

**Construction:** Malleable Iron w/ rubber gasket.

Apache P/N	Description	Wt.Ea.
43013017	Universal Coupling Safety Clips: (bag of 25)	.25#

**Applications:** Securely holds "Universal" couplings locked together, so they will not become accidentally disconnected. One clip is required to lock each connection.

**Note:** Safety clips are the same size for both 2 and 4-lug Universal couplings. Use safety clips on all Universal coupling applications. Sold only in bags of 25.

Apache P/N	Description	Wt.Ea.
43127200	Lanyard Twine ACL8 (bag of 25)	

**Applications:** Strong synthetic cord is tied to safety clip and Universal hose end, keeping safety clip from being lost when "Universal" ends are not connected. Sold only in bags of 25.

**BOSS INTERLOCKING GROUND JOINT COUPLINGS****FEMALE END**

Apache P/N	I.D.	Wt.Ea.
43014005	1/2"	.70#
43014501	3/4"	1.10#
43015001	1"	1.90#
43015508	1-1/4"	3.75#
43016008	1-1/2"	3.95#
43016504	2"	6.05#
43017004	2-1/2"	10.40#
43017500	3"	14.70#
43018000	4"	28.00#

**MALE END**

Apache P/N	I.D.	Wt.Ea.
43029509	1/2"	.20#
43030000	3/4"	.38#
43030507	1"	.61#
43031007	1-1/4"	1.37#
43031503	1-1/2"	1.80#
43032003	2"	2.77#
43032018	2-1/2"	5.20#
43033018	3"	7.15#
43033506	4"	11.00#

**MENDER**

Apache P/N	I.D.	Wt.Ea.
43034490	1/2"	.15#
43034502	3/4"	.60#
43035002	1"	.75#
43035509	1-1/4"	1.20#
43036009	1-1/2"	1.80#
43036505	2"	2.69#
43037005	2-1/2"	4.19#
43037501	3"	6.50#
43037503	4"	10.15#

**Applications:** All purpose couplings, usually recommended for steam hose connections. Use for high to low pressure air, water, liquid petroleum gas, fluid petroleum products, chemical and potable fluids. Attaches to all types of rubber, synthetic, and plastic hoses with "Boss" interlocking bolt type clamps. Use menders to splice damaged hose or to extend/attach two hose lengths together.

## BOSS INTERLOCKING SPUD COUPLINGS



### FEMALE SPUD

Apache P/N	I.D.	Wt.Ea.
43021001	1/2"	.23#
43021508	3/4"	.67#
43022008	1"	.60#
43022009	1-1/4"	1.15#
43023004	1-1/2"	.95#
43023500	2"	1.39#
43024000	2-1/2"	3.77#
43024507	3"	5.00#



### MALE SPUD

Apache P/N	I.D.	Wt.Ea.
43025496	1/2"	.37#
43025497	3/4"	.90#
43025500	1"	1.00#
43025503	1-1/4"	1.18#
43025504	1-1/2"	1.66#
43025506	2"	2.50#
43025507	2-1/2"	4.58#
43025508	3"	6.90#

**Applications:** For use with female Boss ground joint seal couplings. Creates a quick and easy connection between two lengths of hose, or for a male/female threaded NPT outlet on any type of equipment. The spud serves as one half of the connection and is usually fixed permanently to the equipment. The other half consists of a stem and wing nut on the hose.

## BOSS INTERLOCKING BOLT TYPE CLAMPS

### 2-BOLT CLAMPS

Apache P/N	Hose (I.D. x O.D.)	From -To	Part #	Wt.Ea.
43043735	1/2" x 15/16"	1-1/16"	B-4	.32#
43043762	3/4" x 1-3/16"	1-5/16"	BU-9	.69#
43043757	3/4" x 1-5/16"	1-1/2"	B-9	.77#
43043765	3/4" x 1-1/2"	1-11/16"	B-10	.90#



### 4-BOLT CLAMPS

Apache P/N	Hose (I.D. x O.D.)	From -To	Part #	Wt.Ea.
43043802	1" x 1-17/32"	1-23/32"	BU-14	1.52#
43043803	1" x 1-11/16"	1-15/16"	B-14	1.60#
43043838	1-1/4" x 2-1/8"	2-3/8"	B-19	2.40#
43043855	1-1/2" x 2-13/16"	2-3/8"	BU-24	2.33#
43043889	2" x 2-1/2"	2-25/32"	BU-29	2.96#
43043935	2-1/2" x 3-1/2"	3-15/16"	B-34	7.40#
43043951	3" x 3-13/16"	4-1/16"	B-35	8.20#
43043990	4" x 4-7/8"	5-1/4"	BS-49	18.37#



**Applications:** Use to attach "Boss" interlocking clamp type couplings. Plated malleable iron construction. "Fang" gripping fingers on clamps fit over coupling/mender collars. Machined serrations on bars and clamp castings ensure couplings will not work loose.



## PVC WATER SUCTION HOSE – STYLE G (GREEN)



### ASSEMBLIES

#### CPLD. M x F ALUM SHORT SHANK w/BAND-IT CLAMPS

good

Apache P/N	I.D. x Length	Wt.Ea.
98128010	1-1/2" x 20'	9.8#
98128040	2" x 20'	13.7#
98128046	2-1/2" x 20'	21.0#
98128055	3" x 20'	27.0#
98128059	4" x 20'	42.5#
98128140	6" x 20'	101.5#

#### CPLD. ALUM C x E CAM & GROOVE w/BAND-IT CLAMPS

good

Apache P/N	I.D. x Length	Wt.Ea.
98128013	1-1/2" x 20'	11.0#
98128043	2" x 20'	15.0#
98128051	2-1/2" x 20'	21.5#
98128056	3" x 20'	28.0#
98128130	4" x 20'	43.0#
98128141	6" x 20'	107.0#

#### CPLD. ALUM C x PLATED STEEL NIPPLE w/BAND-IT CLAMPS

good

Apache P/N	I.D. x Length	Wt.Ea.
98128500	1-1/2" x 20'	11.0#
98128505	2" x 20'	15.0#
98128509	2-1/2" x 20'	22.0#
98128510	3" x 20'	28.5#
98128515	4" x 20'	43.8#
98128519	6" x 20'	113.0#



### BULK HOSE

good

Apache P/N	I.D. x O.D.	Length	MBR	W.P.	Wt.100'
12022501	1" x 1.25"	100'	3"	90#	26.0#
12022505	1-1/4" x 1.51"	100'	4"	70#	32.0#
12022506	1-1/2" x 1.81"	100'	5"	70#	45.0#
12023006	2" x 2.34"	100'	7"	60#	63.0#
12023502	2-1/2" x 2.88"	100'	8"	60#	90.0#
12024002	3" x 3.42"	100'	10"	50#	116.0#
12024509	4" x 4.49"	100'	14"	45#	182.0#
12024512	5" x 5.58"	100'	23"	45#	311.0#
12025009	6" x 6.80"	100'	28"	45#	458.0#
12025505	8" x 8.94"	100'	40"	40#	710.0#

**Applications:** A PVC suction and discharge hose for water, and suction service in the agricultural, rental, construction, marine, and irrigation industries.

**Construction:** A smooth bore hose made of flexible abrasion resistant extruded PVC with a rigid PVC helix.

**Temp. Range:** -10°F to 130°F (under static conditions).

**W.P. and M.B.R.:** Applicable @68°F.

**Max. Length Bulk:** 3/4" to 6" I.D. = 100', 8" = 30'.

**Assemblies in Other Lengths Available Upon Request.**

**WARNING:** Not for transfer of anhydrous ammonia. For undiluted chemicals, consult Apache for hose recommendations.

**PVC SLUDGE SUCTION HOSE – LOW TEMP (GRAY/GREEN)****ASSEMBLIES****CPLD. M x F ALUM SHORT SHANK****w/BAND-IT CLAMPS****better**

Apache P/N	I.D. x Length	Wt.Ea.
98127000	2" x 20'	15.0#
98127002	3" x 20'	27.5#
98127003	4" x 20'	43.0#
98127005	6" x 20'	80.0#

**CPLD. ALUM C x E CAM & GROOVE****w/BAND-IT CLAMPS****better**

Apache P/N	I.D. x Length	Wt.Ea.
98127007	2" x 20'	16.0#
98127009	3" x 20'	28.5#
98127010	4" x 20'	42.5#
98127011	6" x 20'	85.5#

**CPLD. ALUM C x PLATED STEEL NIPPLE****w/BAND-IT CLAMPS****better**

Apache P/N	I.D. x Length	Wt.Ea.
98127013	2" x 20'	16.5#
98127015	3" x 20'	29.0#
98127016	4" x 20'	43.5#
98127018	6" x 20'	91.5 #

**BULK HOSE****better**

Apache P/N	I.D. x O.D.	Std. Length	MBR	W.P.	Wt.100'
12026115	1-1/2" x 1.80"	100'	2.7"	70#	47#
12026116	2" x 2.40"	100'	3.5"	70#	68#
12026118	3" x 3.45"	100'	5.0"	55#	114#
12026119	4" x 4.55"	100'	7.0"	45#	174#
12026120	6" x 6.60"	20'/25'/30'	10.0"	35#	322#

**Applications:** A low temp PVC suction and discharge hose for water, and sludge pumping service in the construction, rental, marine, agricultural, and irrigation industries.

**Construction:** A smooth bore hose for maximum flow with a pvc helix for increased flexibility and abrasion resistance.

**Temp. Range:** -15°F to 140°F (under static conditions).

**W.P. and M.B.R.:** Applicable @ 68°F.

**Max. Length Bulk:** 100'.

**Assemblies in Other Lengths Available Upon Request.**

**WARNING: For Undiluted Chemicals, Contact Apache for Hose Recommendations.**



## POLY / RUBBER CONTRACTOR'S SUCTION HOSE



### ASSEMBLIES

#### CPLD. M x F ALUM SHORT SHANK w/BAND-IT CLAMPS

**better**

Apache P/N	I.D. x Length	Wt.Ea.
98128170	1-1/2" x 20'	10.3#
98128180	2" x 20'	14.9#
98128185	2-1/2" x 20'	20.3#
98128190	3" x 20'	27.0#
98128194	4" x 20'	43.0#
98128196	6" x 20'	79.3#

#### CPLD. ALUM C x E CAM & GROOVE w/BAND-IT CLAMPS

**better**

Apache P/N	I.D. x Length	Wt.Ea.
98128161	1-1/2" x 20'	11.0#
98128162	2" x 20'	16.0#
98128163	2-1/2" x 20'	22.0#
98128164	3" x 20'	28.5#
98128165	4" x 20'	42.5#
98128166	6" x 20'	85.0#

#### CPLD. ALUM C x PLATED STEEL NIPPLE w/BAND-IT CLAMPS

**better**

Apache P/N	I.D. x Length	Wt.Ea.
98128255	1-1/2" x 20'	11.5#
98128256	2" x 20'	16.5#
98128257	2-1/2" x 20'	22.5#
98128258	3" x 20'	29.5#
98128259	4" x 20'	44.0#
98128260	6" x 20'	92.0#

### BULK HOSE

**better**

Apache P/N	I.D. x O.D.	Length	VacRate	MBR	W.P.	Wt.100'
12012795	1" x 1.34"	100'	28"/HG	4"	80#	23.0#
12012797	1-1/4" x 1.61"	100'	28"/HG	5"	70#	30.0#
12012800	1-1/2" x 1.96"	100'	28"/HG	6"	60#	47.0#
12012805	2" x 2.49"	100'	28"/HG	9"	60#	69.0#
12012807	2-1/2" x 3.00"	100'	28"/HG	11"	50#	93.0#
12012810	3" x 3.60"	100'	28"/HG	12"	50#	119.0#
12012815	4" x 4.69"	100'	28"/HG	17"	45#	181.0#
12012928	6" x 6.86"	100'	20"/HG	27"	35#	348.0#

**Applications:** A lightweight, rugged, flexible suction and discharge hose for the construction, rental, mining, and agricultural industries. Hose is resistant to herbicides & pesticides, including Lasso® and has good flexibility even in cold weather.

**Construction:** EPDM with polyethylene helix reinforcement that serves as a scuff strip.

**Temp. Range:** -30°F to 140°F.

**W.P., MBR, & Vac. Rating:** Applicable @68°F.

**Std. Bulk Length:** 100', 6" I.D. as required.

**WARNING:** Not for transfer of anhydrous ammonia. For undiluted chemicals, consult Apache for hose recommendations.



## REINFORCED PVC SUCTION HOSE

## ASSEMBLIES

**CPLD. M x F ALUM SHORT SHANK  
w/BAND-IT CLAMPS****best**

Apache P/N	I.D. x Length	Wt.Ea.
98127020	3" x 20'	26.0#
98127021	4" x 20'	40.0#
98127022	6" x 20'	88.0#

**CPLD. ALUM C x E CAM & GROOVE  
w/BAND-IT CLAMPS****best**

Apache P/N	I.D. x Length	Wt.Ea.
98127023	3" x 20'	27.0#
98127024	4" x 20'	41.0#
98127025	6" x 20'	93.5#

**CPLD. ALUM C x PLATED STEEL NIPPLE  
w/BAND-IT CLAMPS****best**

Apache P/N	I.D. x Length	Wt.Ea.
98127026	3" x 20'	28.0#
98127027	4" x 20'	42.0#
98127028	6" x 20'	99.0#

## BULK HOSE

**best**

Apache P/N	I.D. x O.D.	Length	MBR	W.P.	Wt.100'
12026235	3" x 4.0"	100'	6"	70#	113#
12026236	4" x 6.0"	100'	8"	65#	174#
12026238	6" x 7.2"	100'	13"	50#	388#

**Applications:** A heavy duty suction and discharge hose for water, and sludge pumping service in the construction, rental, mining, and agricultural industries.

**Construction:** Smooth bore eliminates material build up. External PVC helix and internal reinforcement provides excellent strength, flexibility, and abrasion resistance. Clear hose allows visual confirmation that material is flowing.

**Temp. Range:** -4°F to 150°F.

**W.P. and M.B.R and Vac Rating:** Applicable @68°F.

**Std. Bulk Length:** 100'.

**Assemblies in Other Lengths Available Upon Request.**

**WARNING: Not for transfer of anhydrous ammonia. For undiluted chemicals, consult Apache for hose recommendations.**





**EPDM RUBBER SUCTION / DISCHARGE HOSE****ASSEMBLIES****CPLD. M x F ALUM SHORT SHANK w/BAND-IT CLAMPS**

Apache P/N	I.D. x Length	Wt.Ea.
98128195	1-1/2" x 20'	16.8#
98128300	2" x 20'	17.2#
98128310	2-1/2" x 20'	36.8#
98128320	3" x 20'	48.3#
98128332	4" x 20'	64.8#
98128344	6" x 20'	109.4#

**CPLD. ALUM C x E CAM & GROOVE w/BAND-IT CLAMPS**

Apache P/N	I.D. x Length	Wt.Ea.
98128198	1-1/2" x 20'	17.5#
98128301	2" x 20'	25.0#
98128311	2-1/2" x 20'	38.0#
98128321	3" x 20'	49.5#
98128333	4" x 20'	66.5#
98128345	6" x 20'	115.5#

**CPLD. ALUM C x PLATED STEEL NIPPLE w/BAND-IT CLAMPS**

Apache P/N	I.D. x Length	Wt.Ea.
98128199	1-1/2" x 20'	18.0#
98128299	2" x 20'	25.5#
98128309	2-1/2" x 20'	39.0#
98128322	3" x 20'	50.5#
98128331	4" x 20'	67.5#
98128343	6" x 20'	121.5#

**BULK HOSE****RUBBER CONTRACTOR'S SUCTION**

Apache P/N	I.D. x O.D.	Length	MBR	W.P.	Wt.100'
12003501	1-1/2" x 1-57/64"	100'	8"	150#	82.0#
12004001	2" x 2-7/16"	100'	10"	150#	101.0#
12004106	2-1/2" x 3"	100'	14"	150#	150.0#
12004508	3" x 3-1/2"	100'	22"	150#	175.0#
12005008	4" x 4-37/65"	100'	22"	100#	240.0#
12005504	6" x 6-34/65"	100'	30"	100#	484.0#

**Applications:** A lightweight and flexible hose for the construction and agricultural industries. Will handle full vacuum ratings and pressures up to 150# P.S.I., smooth EPDM tube is adaptable as a material handling, vacuum, or ducting hose.

**Construction:** EPDM tube reinforced with synthetic cord and spiral helix wire (adds flexibility/crush resistance). EPDM cover is resistant to abrasion and rough handling conditions.

**Max. Bulk Length:** 100'.

**Assemblies in Other Lengths Available Upon Request.**

**WARNING:** Not for transfer of anhydrous ammonia. For undiluted chemicals, consult Apache for hose recommendations.



## 2" I.D. TRANSFER PUMP HOSE KITS



### 2" I.D. KIT WITH POLYPROPYLENE QUICK COUPLERS

Apache P/N	Wt.Ea.
98128600	25.#

**Kit Includes one each of the following:**

2" I.D. x 20' PVC suction hose coupled 2" C Poly x Poly K.C. nipple; 2" I.D. x 25' PVC discharge hose coupled 2" C Poly, one end only; 2" 90° F Poly coupling, 2" F Poly coupling, and 2" Poly strainer.

**Applications:** Pump out basements and excavations, water crops or lawns, spray agricultural liquids, or use for swimming pool maintenance.

**Packaged:** In a brown box with a diagram label of items enclosed.



### 2" I.D. KIT WITH ALUMINUM & POLYPROPYLENE FITTINGS

Apache P/N	Wt.Ea.
98128604	25.#

**Kit Includes one each of the following:**

2" I.D. x 20' PVC suction hose coupled M x F aluminum short shank; 2" I.D. x 25' PVC discharge hose coupled M x F aluminum short shank; 2" 90° Poly M x F elbow; 2" Poly M x M nipple; and 2" Poly strainer.

**Applications:** Pump out basements and excavations, water crops or lawns, spray agricultural liquids, or use for swimming pool maintenance.

**Packaged:** In a brown box with a diagram label of items enclosed.



### 3" & 4"

Apache P/N	Size	Wt.Ea.
98128660	3"	31.0#
98128665	4"	46.6#

**Kit Includes one each of the following:**

15 PVC suction hose coupled M x F aluminum short shank; 25 PVC discharge hose coupled M x F aluminum short shank; and steel strainer.

**Applications:** Pump out excavations and excavations, water crops or lawns, spray agricultural liquids, or use for swimming pool maintenance.

**Packaged:** In a brown box with a diagram label of items enclosed.

## TRASH PUMP HOSE KITS

### KITS

Apache P/N	Size	Wt.Ea.
98128652	1-1/2"	12.0#
98128657	2"	16.0#
98128662	3"	31.0#
98128667	4"	46.6#

**Kit Includes one each of the following:**

15' PVC suction hose coupled M x F aluminum short shank; 20' PVC discharge hose coupled M x F aluminum short shank; and a plated steel square hole strainer.

**Applications:** Pump out excavations or slurries where there are solids in the liquid. Large strainer openings allow smaller solids to pass through the pump, but keeps the larger pump damaging solids out.



## TIGER TAIL SUCTION HOSE (YELLOW/BLACK)

### ASSEMBLIES WITH CUFFS

Apache P/N	I.D. x Length	Vac Rate	MBR	Wt.Ea.
98128550	2" x 20'	29"/HG	4.8"	13.0#
98128552	3" x 20'	29"/HG	8.2"	23.0#
98128554	4" x 20'	29"/HG	9.5"	33.0#

**Application:** Designed for liquid suction applications in the rental, construction, and sanitation industries that involve the removal of fluids and waste materials.

**Construction:** Rugged plastic hose with factory installed leak-proof cuffs capable of handling a full vacuum. This hose has a unique construction that offers superior abrasion resistance, is crush proof and will not kink.

**Features:** Hose is highly flexible in sub-zero temperatures, has a smooth interior that increases flow efficiency even at acute angles, resists clogging and build-up of materials.

Sleek exterior reduces drag for easy maneuverability.

**Temp. Range:** -40°F to 140°F.

**Std. Length:** 50' (10' minimum).



**PVC LAY FLAT DISCHARGE HOSE (BLUE)****ASSEMBLIES****CPLD. M x F ALUM SHORT SHANK w/BAND-IT CLAMPS****good**

Apache P/N	I.D. x Length	Wt.Ea.
98138010	1-1/2" x 25'	4.2#
98138040	2" x 25'	5.3#
98138060	3" x 25'	10.0#
98138072	4" x 25'	13.9#
98138095	6" x 25'	25.2#
98138015	1-1/2" x 50'	8.0#
98138045	2" x 50'	10.2#
98138065	3" x 50'	19.5#
98138075	4" x 50'	26.4#
98138100	6" x 50'	49.8#
98138025	1-1/2" x 100'	15.0#
98138054	2" x 100'	18.5#
98138068	3" x 100'	32.0#
98131021	4" x 100'	42.0#
98131023	6" x 100'	75.0#

**CPLD. ALUM C x E CAM & GROOVE w/BAND-IT CLAMPS****good**

Apache P/N	I.D. x Length	Wt.Ea.
98138012	1-1/2" x 25'	5.0#
98138043	2" x 25'	6.5#
98138063	3" x 25'	11.5#
98138074	4" x 25'	15.5#
98138096	6" x 25'	32.0#
98138017	1-1/2" x 50'	9.0#
98138047	2" x 50'	11.0#
98138067	3" x 50'	18.5#
98138077	4" x 50'	24.5#
98138104	6" x 50'	48.0#
98138030	1-1/2" x 100'	16.0#
98138053	2" x 100'	20.0#
98138069	3" x 100'	33.0#
98138078	4" x 100'	43.0#
98138105	6" x 100'	81.0#

**BULK HOSE****good**

Apache P/N	I.D. x Length	W.P.	Wt.100'
13026504	1-1/4" x 300'	80#	14.0#
13026505	1-1/2" x 300'	75#	14.0#
13027005	2" x 300'	70#	17.0#
13027501	2-1/2" x 300'	60#	22.0#
13028001	3" x 300'	55#	28.0#
13028508	4" x 300'	45#	36.0#
13029008	6" x 300'	40#	65.0#
13029504	8" x 300'	35#	110.0#
13030006	10" x 100'	35#	200.0#
13030008	12" x 100'	35#	243.0#
13030007	14" x 100'	30#	270.0#
13030009	16" x 100'	30#	308.0#

**Applications:** Discharge hose for water, and pumping service in the construction, agricultural, rental, marine, and irrigation industries.

**Construction:** Tube/cover are PVC, reinforced with 3 ply polyester yarns, one longitudinal ply and two spiral plies. Both tube/cover are extruded simultaneously to obtain maximum bonding.

**Features:** Strong, lightweight, non water-absorbing, and mildew proof hose that rolls up flat for easy storage. Resistant to oils, grease.

**Temp. Range:** -5°F to 130°F.

**Std. Lengths:** 300' coils.

**Assemblies in Other Lengths and Coupling Combinations Are Available Upon Request.**



## MEDIUM DUTY PVC LAY FLAT DISCHARGE (BROWN)



## ASSEMBLIES

## CPLD. M x F ALUM SHORT SHANK w/BAND-IT CLAMPS

**better**

Apache P/N	I.D. x Length	Wt.Ea.
98138120	1-1/2" x 25'	6.0#
98138126	2" x 25'	8.2#
98138133	2-1/2" x 25'	11.5#
98138138	3" x 25'	16.2#
98138144	4" x 25'	23.6#
98138150	6" x 25'	40.3#
98138123	1-1/2" x 50'	11.6#
98138129	2" x 50'	15.6#
98138136	2-1/2" x 50'	21.7#
98138141	3" x 50'	29.7#
98138147	4" x 50'	41.9#
98138153	6" x 50'	72.2#
98138125	1-1/2" x 100'	22.5#
98138131	2" x 100'	30.5#
98138137	2-1/2" x 100'	42.5#
98138143	3" x 100'	56.5#
98138149	4" x 100'	81.0#
98138155	6" x 100'	135.0#

## CPLD. ALUM C x E CAM &amp; GROOVE w/BAND-IT CLAMPS

**better**

Apache P/N	I.D. x Length	Wt.Ea.
98138119	1-1/2" x 25'	7.0#
98138127	2" x 25'	9.5#
98138134	2-1/2" x 25'	13.0#
98138139	3" x 25'	18.0#
98138145	4" x 25'	25.5#
98138151	6" x 25'	47.0#
98138121	1-1/2" x 50'	12.5#
98138130	2" x 50'	16.5#
98138135	2-1/2" x 50'	23.0#
98138142	3" x 50'	31.0#
98138148	4" x 50'	44.0#
98138154	6" x 50'	78.0#
98138122	1-1/2" x 100'	23.0#
98138132	2" x 100'	30.5#
98138157	2-1/2" x 100'	43.0#
98138158	3" x 100'	57.5#
98138159	4" x 100'	81.5#
98138156	6" x 100'	141.5#

## BULK HOSE

**better**

Apache P/N	I.D. x Length	W.P.	Wt.100'
13030014	1-1/2" x 300'	150#	21.3#
13030022	2" x 300'	150#	28.3#
13030030	2-1/2" x 300'	150#	39.6#
13030049	3" x 300'	150#	52.6#
13030103	4" x 300'	150#	75.0#
13030154	6" x 300'	150#	125.0#
13030175	8" x 300'	115#	188.6#

**Applications:** Discharge hose for water, and pumping service in the construction, rental, agricultural, mining, marine, and irrigation industries.

**Construction:** Tube/cover are PVC, reinforced with 3 ply polyester yarns, 1 longitudinal ply and 2 spiral plies. Both tube/cover are extruded simultaneously to obtain maximum bonding.

**Features:** Strong, lightweight, non water-absorbing, and mildew proof hose that rolls up flat for easy storage. Resistant to oils, grease.

**Temp. Range:** -5°F to 130°F.

**Flame Resistant:** USMSHA IC-150/1 (size 1-1/2", 2", and 2-1/2").

**W.P.:** Applicable @70°F.

**Std. Lengths:** 300' coils.

**Assemblies in Other Lengths and Coupling Combinations Are Available Upon Request.**



## HEAVY DUTY LAY FLAT DISCHARGE

### ASSEMBLIES

#### CPLD. SHORT SHANK w/BAND-IT CLAMPS

**best**

Apache P/N	I.D. x Length	Wt.Ea.
98138376	4" x 50'	68.0#
98138379	6" x 50'	105.0#
98138377	4" x 100'	130.0#
98138380	6" x 100'	199.0#

#### CPLD. ALUM C x E CAM & GROOVE w/BAND-IT CLAMPS

**best**

Apache P/N	I.D. x Length	Wt.Ea.
98138394	4" x 50'	69.0#
98138397	6" x 50'	110.0#
98138400	8" x 50'	149.0#
98138395	4" x 100'	131.0#
98138398	6" x 100'	204.0#
98138401	8" x 100'	276.5#

#### CPLD. BALL & SOCKET w/BAND-IT CLAMPS

**best**

Apache P/N	I.D. x Length	Wt.Ea.
98138403	4" x 50'	75.0#
98138406	6" x 50'	118.0#
98138409	8" x 50'	169.0#
98138404	4" x 100'	137.0#
98138407	6" x 100'	212.0#
98138410	8" x 100'	297.0#

### BULK HOSE

**best**

Apache P/N	I.D. x Length	P.S.I. Test	Wt.Ft.
13030323	4" x 100'	200#	1.24#
13030327	6" x 100'	200#	1.88#
13030330	8" x 100'	150#	2.55#

**Applications:** Designed for the toughest discharge applications in construction, mining, jetting, and agriculture.

**Construction:** Black rubber and PVC compounds with a heavy wall polyester cord reinforcement to provide the ultimate in heavy duty discharge hose.

**Features:** Heavy duty, non water-absorbing and mildew proof hose that rolls up flat for easy storage and movement.





## MEDIUM DUTY RUBBER WATER DISCHARGE HOSE

### ASSEMBLIES

#### CPLD. M x F ALUM SHORT SHANK w/BAND-IT CLAMPS

Apache P/N	I.D. x Length	Wt.Ea.
98138270	1-1/2" x 25'	32.0#
98138272	2" x 25'	38.0#
98138274	3" x 25'	59.0#
98138276	4" x 25'	93.0#
98138280	1-1/2" x 50'	62.5#
98138282	2" x 50'	74.5#
98138284	3" x 50'	113.7#
98138286	4" x 50'	180.0#
98131026	1-1/2" x 100'	123.5#
98131029	2" x 100'	147.5#
98131032	3" x 100'	168.5#
98131035	4" x 100'	354.0#

#### CPLD. ALUM C x E CAM & GROOVE w/BAND-IT CLAMPS

Apache P/N	I.D. x Length	Wt.Ea.
98138355	1-1/2" x 25'	32.5#
98138357	2" x 25'	39.0#
98138359	3" x 25'	60.0#
98138361	4" x 25'	94.0#
98138356	1-1/2" x 50'	63.0#
98138358	2" x 50'	75.5#
98138360	3" x 50'	114.7#
98138362	4" x 50'	181.0#

### BULK HOSE

Apache P/N	I.D. x O.D.	Length	Ply	MBR	W.P.	Wt.100'
13021007	1-1/2" x 1.98"	100'	2	9"	150#	122.0#
13021503	2" x 2.48"	100'	2	12"	120#	146.0#
13022003	2-1/2" x 3.01"	100'	2	15"	100#	170.0#
13023506	3" x 3.50"	100'	2	18"	85#	219.0#
13023606	4" x 4.73"	100'	2	24"	75#	348.0#

**Assemblies:** A general water discharge hose especially designed for the construction, light industrial, and agricultural industries.

**Construction:** Smooth, high quality EPDM tube/cover reinforced with synthetic cord plies.

**Temp. Range:** -40°F to 190°F.

**Max. Length:** 100'.

**WARNING:** For undiluted chemicals, consult Apache for hose recommendations.



## HEAVY DUTY RUBBER WATER DISCHARGE HOSE

### BULK HOSE

Apache P/N	I.D. x O.D.	Length	Ply	MBR	W.P.	Wt.100'
13024008	3" x 3-1/2"	100'	4	18"	200#	146.0#
13024030	3-1/2" x 4"	100'	4	21"	150#	230.0#
13024009	4" x 4-1/2"	100'	4	24"	150#	219.0#
13024011	6" x 6-1/2"	100'	4	36"	150#	389.0#
13024117	8" x 8-1/2"	100'	4	48"	120#	510.0#
13024013	10" x 10-1/2"	50'	4	60"	120#	634.0#

**Applications:** A top grade water hose for general discharge service in the construction, agricultural, mining, marine, and industrial industries.

**Construction:** Good quality rubber tube reinforced with plies of synthetic tire cord and an abrasion and weather resistant cover.

**Temp. Range:** -40°F to 190°F.

**Max. Length:** 100'.

**WARNING:** For undiluted chemicals, consult Apache for hose recommendations.



## MILL WASH DOWN/DISCHARGE HOSE



## ASSEMBLIES

## CPLD. M x F ALUM SHORT SHANK w/BAND-IT CLAMPS

Apache P/N	I.D. x Length	Wt.Ea.
98168078	1-1/2" x 25'	6.0#
98168085	2" x 25'	7.0#
98168095	2-1/2" x 25'	11.0#
98168098	3" x 25'	14.5#
98168108	4" x 25'	26.0#
98168112	6" x 25'	48.0#
98168080	1-1/2" x 50'	11.0#
98168090	2" x 50'	13.0#
98168097	2-1/2" x 50'	19.5#
98168100	3" x 50'	25.0#
98168110	4" x 50'	46.0#
98168114	6" x 50'	86.0#

## CPLD. ALUM C x E CAM &amp; GROOVE w/BAND-IT CLAMPS

Apache P/N	I.D. x Length	Wt.Ea.
98168196	1-1/2" x 25'	7.0#
98168199	2" x 25'	8.0#
98168205	2-1/2" x 25'	12.0#
98168220	3" x 25'	15.0#
98168245	4" x 25'	26.5#
98168260	6" x 25'	53.0#
98168197	1-1/2" x 50'	12.0#
98168200	2" x 50'	14.0#
98168210	2-1/2" x 50'	21.5#
98168225	3" x 50'	25.5#
98168250	4" x 50'	46.5#
98168265	6" x 50'	91.0#

## BULK HOSE

Apache P/N	I.D.	P.S.I.	Wt.Ft.
16000500	1-1/2"	112#	.20#
16000507	2"	112#	.23#
16001007	2-1/2"	112#	.34#
16001503	3"	112#	.42#
16002003	4"	112#	.80#
16002006	6"	112#	1.50#



**Applications:** A lightweight, easy-to-handle general purpose hose for cleanup and wash down in factories and mill yards. An ideal contractors/industrial discharge hose.

**Construction:** Single jacket, 100% polyester construction will not mildew or decay with age. Lining is weather resistant extruded synthetic rubber.

**Assemblies:** Coupled assembly prices include male and female pipe thread short shank couplings with Band-It smooth I.D. clamps.

**Clamps:** 1-1/2" and 2" I.D. assemblies include one clamp on each end, 2-1/2" and 4" I.D. assemblies include two clamps on each end and the 6" I.D. assemblies include three clamps on each end.

**Std. Lengths:** Bulk 50'. 100' available by special order.

## FIRE HOSE



## ASSEMBLIES

## SINGLE JACKET

**good**

Apache P/N	I.D. x Length	P.S.I. Test	Wt.Ea.
16003522	1-1/2" x 50'	300#	10.0#
16004014	2-1/2" x 50'	300#	17.5#

**Applications:** A lightweight hose designed to be stored for long periods of time.

Recommended for use in indoor emergency fire protection applications.

**Construction:** 100% polyester woven jacket with a single ply extruded synthetic rubber lining.

**Assemblies:** Coupled with internally expanded male x female NST thread extruded aluminum rocker lug couplings.

**Features:** This hose will not decay, is impervious to mildew and never needs drying.

**Available with either a white or yellow impregnated cover.**



## DOUBLE JACKET

**better**

Apache P/N	I.D. x Length	P.S.I. Test	Wt.Ea.
16018007	1-1/2" x 50'	600#	15.0#
16018503	2-1/2" x 50'	600#	28.0#

**Applications:** For use in industrial fire protection applications.

**Construction:** Finest high tensile, 100% polyester yarn compactly woven with complete filler yarn coverage in both jackets. Hose is rubber lined.

**Assemblies:** Coupled with internally expanded male x female NST thread extruded aluminum rocker lug couplings.

**Features:** A flexible, strong, and abrasion resistant hose that is manufactured to exacting municipal requirements.

**Available with either a white or yellow impregnated cover.**



## NITRILE RUBBER COVER

**best**

Apache P/N	I.D. x Length	P.S.I. Test	Wt.Ea.
16014050	1-1/2" x 50'	500#	11#
16014052	2-1/2" x 50'	500#	20#

**Applications:** For use in industrial fire protection applications or as a heavy duty washdown hose.

**Construction:** 100% synthetic reinforcement construction which is totally encapsulated in a red nitrile rubber compound utilizing a through the weave extrusion process. Long service life red nitrile cover is abrasion, oil, and heat resistant.

**Assemblies:** Coupled with internally expanded male x female NST thread extruded aluminum rocker lug couplings.

## FOG NOZZLES



## THERMOPLASTIC

Apache P/N	Size – Thread	Wt.Ea.
46045007	3/4" NPSH	.34#
46045008	1" NPSH	.50#
46045505	1-1/2" NPSH	.56#
46045009	1-1/2" NST	.56#

**Construction:** Red polycarbonate with brass stem.

**Applications:** For use up to 100 P.S.I.

**Note:** Adjustable from straight stream to fog, includes a rubber bumper to protect the spray nozzle tip.



## BRASS – INDUSTRIAL

Apache P/N	Size – Thread	Wt.Ea.
46045578	1" NST	1.09#
46045576	1-1/2" NPSH	1.50#
46045579	1-1/2" NST	1.44#
46045580	2-1/2" NST	3.27#

**Applications:** For water use only, up to 100 P.S.I.

**Construction:** Solid Brass

**Note:** Adjusts from shut off, straight stream or fog and comes with a rubber bumper to protect the spray nozzle tip.

## BRASS HYDRANT ADAPTERS



### ADAPTERS

Apache P/N	Description	Wt.Ea.
46038550	2-1/2" FNST x 3/4" MGHT	1.31#
46036018	2-1/2" FNST x 1-1/2" MNST	1.25#
46038509	2-1/2" FNST x 1-1/2" MNPT	1.25#
46041011	2-1/2" FNST x 2" MNPT	1.38#
46039118	2-1/2" FNST x 2-1/2" MNPT	1.61#
46040007	2-1/2" FNST x 3" MNPT	2.58#

**Construction:** Machined from solid brass castings.

Pin lug style in reducer and same size end configurations.

**Other Styles, Sizes, Prices, and Availability Upon Request.**

### HYDRANT WRENCH

Apache P/N	Description	Wt.Ea.
46045715	Heavy Duty Adjustable	2.70#

**Construction:** Plated malleable iron head and 1/2" plated steel handle. For pentagon nuts up to 1-3/4". Built-in spanner for pin or rocker lug couplings. 16-1/4" overall length.

## CONTRACTORS INDUSTRIAL WATER / GARDEN HOSE



### ASSEMBLIES

Apache P/N	I.D. x Length	W.P.	Wt.Ea.
98108797	5/8" x 25'	200#	6.6#
98108798	5/8" x 50'	200#	12.8#
98108799	5/8" x 75'	200#	14.1#
98108800	5/8" x 100'	200#	25.3#
98108802	3/4" x 25'	200#	9.2#
98108804	3/4" x 50'	200#	18.1#
98108806	3/4" x 75'	200#	27.0#
98108809	3/4" x 100'	200#	35.8#

**Construction:** EPDM rubber cover and tube reinforced with polyester yarn.

**Assemblies:** 200# PSI. working pressure, coupled with heavy duty solid brass male x female garden hose thread couplings. Includes one bend restrictor on the female end.

**Benefits:** Resists sunlight, abrasion, kinking, and cracking, flexible in freezing temperatures. Bend restrictor promotes longer service life.

**Temp. Range:** -40°F to 200°F (-40°C to 93°C).

**Assemblies in Other Lengths Available upon Request.**

## PIN-LUG COUPLINGS – ALUMINUM/BRASS



## PIN-LUG COUPLING SETS

Apache P/N	Description	Wt.Ea.
97438100	1-1/2" I.D.	.56#
97438105	2" I.D.	.88#
97438106	2-1/2" I.D.	1.34#
97438107	3" I.D.	2.70#
97438108	4" I.D.	4.42#
97438109	6" I.D.	8.30#

**Applications:** For use with hoses handling water and other liquids. Aluminum shanks with brass pin-lug nut. 3" through 6" male couplings have pin-lugs. Requires clamps to attach to hose.

## FEMALE – ALUM. w/BRASS NUT

Apache P/N	Description	Wt.Ea.
43074504	1-1/2" I.D.	.38#
43076000	2" I.D.	.62#
43076015	2-1/2" I.D.	.75#
43077252	3" I.D.	1.66#
43077279	4" I.D.	2.72#
43077295	6" I.D.	5.26#

**Applications:** For use with hoses handling water and other liquids. Female SIPT threads (require a gasket to seal). Requires clamps to attach to hose.

## SPANNER WRENCHES

Apache P/N	Description	Wt.Ea.
43105507	1-1/2" I.D.	.79#
43106007	2" I.D.	.88#
43106503	2-1/2" I.D.	.95#
43107003	3" I.D.	1.10#
43107518	4" I.D.	1.30#
43107520	6" I.D.	4.50#

**Applications:** Plated malleable iron spanner wrench for use on male/female pin-lug couplings.

## KING NIPPLES – PLATED STEEL

Apache P/N	Description	Wt.Ea.
43050555	1/2" I.D.	.14#
43050560	3/4" I.D.	.20#
43050565	1" I.D.	.32#
43050570	1-1/4" I.D.	.56#
43050575	1-1/2" I.D.	.72#
43050580	2" I.D.	1.10#
43050585	2-1/2" I.D.	1.74#
43050590	3" I.D.	2.14#
43050600	4" I.D.	3.06#
43050610	5" I.D.	4.20#
43050620	6" I.D.	12.24#
43050630	8" I.D.	16.44#

**Applications:** For low pressure suction/discharge use with hoses handling water and other liquids. Male pipe threads are the same size as the hose I.D. Requires clamps to attach to hose.

**Construction:** Plated steel for rust resistance.

## MALE – ALUMINUM

Apache P/N	Description	Wt.Ea.
43074008	1-1/2" I.D.	.18#
43075500	2" I.D.	.26#
43076010	2-1/2" I.D.	.57#
43077007	3" I.D.	1.04#
43077260	4" I.D.	1.70#
43077287	6" I.D.	3.04#

**Applications:** For use with hoses handling water and other liquids. Male SIPT threads. 3" through 6" male couplings have pin-lugs. Requires clamps to attach to hose.

## EPDM GASKETS

Apache P/N	Description	Wt.Ea.
43081284	1-1/2" I.D.	.13#
43081292	2" I.D.	.13#
43081306	2-1/2" I.D.	.13#
43081314	3" I.D.	.13#
43081349	4" I.D.	.13#
43081381	6" I.D.	.13#

**Applications:** Standard EPDM rubber gaskets for female SIPT pin-lug couplings. Also available in other compounds.

## HOSE MENDERS – STEEL

Apache P/N	Description	Wt.Ea.
43039008	1/2" I.D.	.07#
43039504	3/4" I.D.	.13#
43040006	1" I.D.	.27#
43040502	1-1/4" I.D.	.40#
43041002	1-1/2" I.D.	.44#
43041509	2" I.D.	.70#
43042009	2-1/2" I.D.	.95#
43042505	3" I.D.	1.44#
43043005	4" I.D.	4.39#
43043115	5" I.D.	#
43043501	6" I.D.	7.56#
43043609	8" I.D.	14.50#

**Applications:** Repair/splice damaged hose or extend the length. Mender shanks are the same I.D. on both ends. Requires clamps to attach to hose.

**Male End Fitting:** Fully reusable, in a wide range of sizes. Shank of nipple is the same as hose I.D. Long corrugated shanks grip the tube of hose firmly.

**Available In:** Sizes 1-1/2" to 8" and in brass, stainless steel, cast iron, or polypropylene.

**Note:** Not for compressible products such as air, nitrogen, or steam.



## ALUMINUM CAM & GROOVE COUPLINGS



### PART "A" MALE ADAPTERS

Apache P/N	Description	Wt.Ea.
50400000	1-1/2" I.D.	.28#
50400010	2" I.D.	.38#
50400015	2-1/2" I.D.	.58#
50400020	3" I.D.	.70#
50400030	4" I.D.	1.34#
50400035	6" I.D.	2.00#
50005522	8" I.D.	10.90#

### PART "E" MALE ADAPTERS

Apache P/N	Description	Wt.Ea.
50400160	1-1/2" I.D.	.38#
50400170	2" I.D.	.60#
50400175	2-1/2" I.D.	.86#
50400180	3" I.D.	1.32#
50400190	4" I.D.	2.10#
50400195	6" I.D.	6.16#
50111010	8" I.D.	10.00#



### PART "B" FEMALE COUPLERS

Apache P/N	Description	Wt.Ea.
50400040	1-1/2" I.D.	.70#
50400050	2" I.D.	.86#
50400055	2-1/2" I.D.	1.02#
50400060	3" I.D.	1.56#
50400070	4" I.D.	2.42#
50400075	6" I.D.	4.98#
50400074	8" I.D.	19.65#

### PART "F" MALE ADAPTERS

Apache P/N	Description	Wt.Ea.
50400240	1-1/2" I.D.	.46#
50400250	2" I.D.	.68#
50400255	2-1/2" I.D.	.96#
50400260	3" I.D.	1.30#
50400270	4" I.D.	2.32#
50400275	6" I.D.	3.92#
50134600	8" I.D.	7.20#



### PART "C" FEMALE COUPLERS

Apache P/N	Description	Wt.Ea.
50400080	1-1/2" I.D.	.74#
50400090	2" I.D.	.98#
50400095	2-1/2" I.D.	1.28#
50400100	3" I.D.	2.20#
50400110	4" I.D.	3.16#
50400115	6" I.D.	7.70#
50059505	8" I.D.	15.50#

### PART "DC" DUST CAPS

Apache P/N	Description	Wt.Ea.
50400280	1-1/2" I.D.	.64#
50400290	2" I.D.	.80#
50400295	2-1/2" I.D.	.94#
50400300	3" I.D.	1.44#
50400310	4" I.D.	2.34#
50400312	6" I.D.	4.66#
50181505	8" I.D.	9.04#



### PART "D" FEMALE COUPLERS

Apache P/N	Description	Wt.Ea.
50400120	1-1/2" I.D.	.80#
50400130	2" I.D.	.92#
50400135	2-1/2" I.D.	1.18#
50400140	3" I.D.	1.80#
50400150	4" I.D.	2.82#
50400155	6" I.D.	5.11#
50085510	8" I.D.	9.50#

### PART "DP" DUST PLUGS

Apache P/N	Description	Wt.Ea.
50400315	1-1/2" I.D.	.25#
50400320	2" I.D.	.38#
50400325	2-1/2" I.D.	.54#
50400330	3" I.D.	.74#
50400340	4" I.D.	1.22#
50400345	6" I.D.	2.53#
50158501	8" I.D.	5.35#

**Benefits:** Connect hose without threading, tools, lugs, twisting, springs, ball bearings, or snaps!

**Available In:** Aluminum, Bronze, Stainless Steel, Monel, Cast Iron, and Polypropylene with Stainless Steel handles.

**Other Sizes and Styles Available Upon Request.**

## BUNA GASKETS



### Apache P/N Description

50205002	1-1/2" I.D.
50205509	2" I.D.
50206009	2-1/2" I.D.
50206505	3" I.D.
50207005	4" I.D.
50208001	6" I.D.
50208100	8" I.D.

**Applications:** Standard EPDM rubber gaskets for female cam & groove couplings. Also available in other compounds.

## POLY CAM & GROOVE COUPLINGS



### PART "A" MALE ADAPTER

Apache P/N	Description	MFG#	Wt.Ea.
49010425	1-1/2" I.D.	61231	.208#
49010430	2" I.D.	61239	.291#
49010450	3" I.D.	61247	.541#



### PART "B" FEMALE COUPLER

Apache P/N	Description	MFG#	Wt.Ea.
49030515	1-1/2" I.D.	61271	.583#
49030520	2" I.D.	61275	.666#
49030525	3" I.D.	61279	1.125#



### PART "C" FEMALE COUPLER

Apache P/N	Description	MFG#	Wt.Ea.
49030545	1-1/2" I.D.	61272	.583#
49030550	2" I.D.	61276	.708#
49030555	3" I.D.	61280	1.375#



### PART "D" FEMALE COUPLER

Apache P/N	Description	MFG#	Wt.Ea.
49030575	1-1/2" I.D.	61273	.583#
49030580	2" I.D.	61277	.666#
49030585	3" I.D.	61281	1.166#



### PART "E" MALE ADAPTER

Apache P/N	Description	MFG#	Wt.Ea.
49012375	1-1/2" I.D.	61235	.25#
49012380	2" I.D.	61243	.375#
49012400	3" I.D.	61251	.708#



### PART "F" MALE ADAPTER

Apache P/N	Description	MFG#	Wt.Ea.
49013995	1-1/2" I.D.	61236	.208#
49014000	2" I.D.	61244	.333#
49014025	3" I.D.	61252	.666#



### PART "DC" DUST CAP

Apache P/N	Description	MFG#	Wt.Ea.
49030600	1-1/2" I.D.	61274	.583#
49030610	2" I.D.	61278	.666#
49030615	3" I.D.	61282	1.041#



### PART "DP" DUST PLUG

Apache P/N	Description	MFG#	Wt.Ea.
49014745	1-1/2" I.D.	61238	.166#
49014750	2" I.D.	61246	.208#
49014800	3" I.D.	61254	.375#

### EPDM GASKETS

Apache P/N	Description	MFG#
49014910	1-1/2" I.D.	61572
49014915	2" I.D.	61574
49014920	3" I.D.	61575

**Construction:** Glass reinforced polypropylene.

**Benefits:** No threading, tools, lugs, twisting, springs, ball bearings, or snaps! Polypropylene with stainless steel handles.

**WARNING:** Do not open cam arms when liquid in line is under pressure.

## BALL AND SOCKET COUPLINGS



### HOSE SET ASSEMBLY

Apache P/N	Description	MFG#	Wt.Ea.
44103301	2"	275 HSA2	3.0#
44103302	3"	275 HSA3	4.0#
44103303	4"	275 HSA4	12.0#
44103304	5"	275 HSA5	16.0#
44103305	6"	275 HSA6	22.0#
44103306	8"	275 HSA8	36.0#

### HOSE TAIL BALL – MALE

Apache P/N	Description	MFG#	Wt.Ea.
44103307	2"	260 HTM2	1.0#
44103308	3"	260 HTM3	1.5#
44103309	4"	260 HTM4	4.0#
44103310	5"	260 HTM5	5.0#
44103311	6"	260 HTM6	6.0#
44103312	8"	260 HTM8	10.0#

### HOSE TAIL SOCKET – FEMALE

Apache P/N	Description	MFG#	Wt.Ea.
44103313	2"	270 HTFA2	1.0#
44103314	3"	270 HTFA3	2.0#
44103315	4"	270 HTFA4	4.0#
44103316	5"	270 HTFA5	5.0#
44103317	6"	270 HTFA6	7.0#
44103318	8"	270 HTFA8	12.0#

### LEVER LOCKING RING

Apache P/N	Description	MFG#	Wt.Ea.
44103319	2"	273 LR2	1.0#
44103320	3"	273 LR3	2.0#
44103321	4"	273 LR4	5.0#
44103322	5"	273 LR5	6.0#
44103323	6"	273 LR6	9.0#
44103324	8"	273 LR8	14.0#

### O-RING

Apache P/N	Description	MFG#
44103325	2"	280 OR2
44103326	3"	280 OR3
44103327	4"	280 OR4
44103328	5"	280 OR5
44103329	6"	280 OR6
44103330	8"	280 OR8

### DOUBLE HOSE CONNECTION

Apache P/N	Description	MFG#	Wt.Ea.
44103331	2"	278 DHC2	1.0#
44103332	3"	278 DHC3	2.0#
44103333	4"	278 DHC4	4.0#
44103334	6"	278 DHC6	5.0#
44103335	8"	278 DHC8	10.0#

**Applications:** Use for suction/ discharge hose in heavy duty construction/ industrial applications.

**Construction:** Couplings are precision crafted from galvanized steel (Bauer compatible) providing a longer life span.

**Features:** Couplings have a higher working pressure rating than typical cam-lock or other quick action couplings, and have a 30% socket flexibility in all directions. Pump/ hose do not have to be perfectly aligned.

**Benefits:** Quick connections and no threads to clean decrease set up time, and make coupling easy, even in adverse conditions such as snow and mud.

**Additional Styles Available**

## PROGRIP AUTOLOCK SELF-LOCKING COUPLING RETENTION SYSTEM



**Applications:** Industrial hoses - chemicals, petroleum, concrete pumping, hot tar, food processing, and other harsh applications where leaks and spills are most serious.

**Construction:** The ProGrip system features a special crimp ferrule and shank body that lock the coupling to the hose for superior coupling retention. Operates like a regular quick coupling, cam arms lock in place automatically. ProGrip coupling bodies are reusable, and are available in aluminum and stainless steel. Autolock couplings are compatible with other quick couplings.

**Coupling Styles:** Autolock Kamlok, NPT Couplings, Reattachable Fuel Delivery, and Sanitary Couplings.

CONTACT CUSTOMER SERVICE FOR ADDITIONAL INFORMATION AND PRICING.

## BAND-IT CLAMPS & TOOLS



### CENTER PUNCH PREFORMED CLAMPS - CARBON STEEL

Apache P/N	Clamp I.D.	MFG#	Band Width	Qty.Bx.	Wt.Bx.
40029100	13/16"	(CP03)	3/8"	100	3.6#
40029105	1-3/8"	(CP311)	3/8"	100	4.6#
40029120	1-1/2"	(CP06)	5/8"	100	9.7#
40029130	2"	(CP08)	5/8"	100	11.5#
40029145	2-3/4"	(CP11)	5/8"	50	7.3#
40029155	3-1/2"	(CP14)	5/8"	50	8.7#
40029160	4"	(CP16)	5/8"	25	4.9#
40029165	5"	(CP20)	5/8"	25	5.9#
40029175	7"	(CP28)	5/8"	25	7.4#

**Applications:** Use to attach pin-lug couplings, kc nipples, cam and groove couplers, and hose menders to hose.

**Construction:** Heat treated galvanized steel band with stainless steel buckles for maximum locking strength. Use Band-It® T300 or S38 center punch tool to install.

**Available In:** Sizes 13/16" to 8" I.D.

### CENTER PUNCH TOOLS

Apache P/N	Description	Wt.Ea.
40049004	T300 Center Punch Tool for 5/8" Bands	3.15#
40049005	3/8" Adapter for T300 Center Punch Tool	.02#
40049509	Center Punch Hand Tool for 3/8" to 5/8" Bands	1.10#

**Applications:** Ratchet action tensioning tools are used to tighten and then lock center punch clamps by striking the tool punch with a mallet or hammer.

## BAND-IT® JR. SMOOTH I.D. CLAMPS & TOOLS



### CARBON STEEL PREFORMED CLAMPS

Apache P/N	Band I.D.	MFG#	Band Width	Qty.Bx.	Wt.Bx.
40029017	13/16"	JS301	3/8"	100	3.6#
40029084	1-3/8"	JS302	3/8"	100	5.0#
40029024	1-1/2"	JS305	5/8"	100	10.4#
40029030	2"	JS307	5/8"	100	12.2#
40029042	2-3/4"	JS310	3/4"	100	9.2#
40029056	3-1/2"	JS312	3/4"	50	10.8#
40029062	4"	JS313	3/4"	25	6.1#
40029066	5"	JS315	3/4"	25	7.2#
40029070	7"	JS318	3/4"	25	10.2#

**Available In:** Galvanized or stainless steel in sizes 13/16" to 8" I.D.

### BAND-IT® JR. TOOLS

Apache P/N	Description	Wt.Ea.
40047506	J020 POK-It II Tool - for J301 & J302 only	1.10#
40047018	C001 Banding Tool	4.40#
40048502	J001 Band-It® Jr. Adapter - for C001 Tool	1.44#

## BAND-IT BUCKLES & TOOLS



### BANDS – GALVANIZED CARBON STEEL

Apache P/N	Width	MFG#	Roll	Wt.Bx.
40003002	3/8"	(C303)	100'	3.3#
40003509	1/2"	(C304)	100'	5.1#
40004009	5/8"	(C305)	100'	6.4#
40004505	3/4"	(C306)	100'	7.7#

**Applications:** Use for securing signs, cable bundling, pipe insulation, hose couplings, and a variety of other uses which do not require the bands to be of high strength or provide corrosion resistance.

### BUCKLES – GALVANIZED CARBON STEEL

Apache P/N	Width	MFG#	Qty.Bx.	Wt.Bx.
40008004	3/8"	(C353)	100	.8#
40008500	1/2"	(C354)	100	2.1#
40009000	5/8"	(C355)	100	2.4#
40009507	3/4"	(C356)	100	3.7#

**Applications:** For use with galvanized banding. Buckles are designed to accommodate both single and double wraps of banding. Unique teeth and ear design provide maximum clamping strength. Apply with C001 banding tool.

### BANDS – 201 STAINLESS STEEL

Apache P/N	Width	MFG#	Roll	Wt.Bx.
40000518	3/8"	(C203)	100'	3.2#
40001018	1/2"	(C204)	100'	5.1#
40001506	5/8"	(C205)	100'	6.4#
40002006	3/4"	(C206)	100'	7.7#

**Applications:** For use where high strength and corrosion resistant banding is required. Bands have superior yield and tensile strength properties for maximum clamping strength. Imprinting on band eliminates costly waste and complicated measuring by allowing users to quickly and precisely roll out the exact length of banding needed.

### BUCKLES – 201 STAINLESS STEEL

Apache P/N	Width	MFG#	Qty.Bx.	Wt.Bx.
40005501	3/8"	(C253)	100	.8#
40006001	1/2"	(C254)	100	2.1#
40006508	5/8"	(C255)	100	2.4#
40007008	3/4"	(C256)	100	3.7#

**Applications:** For use with bulk stainless steel banding. Buckles are designed to accommodate both single and double wraps of banding. Unique teeth and ear design provide maximum clamping strength. Apply with C001 banding tool.

### BAND-IT® TOOL

Apache P/N	Description	Wt.Ea.
40047018	C001 Banding Tool	4.40#

**Construction:** Drop forged steel Band-It tool has a tensioning capability of over 2,400# and includes a built in band cutter.

**Note:** Band-It® steel hose nipples also available.

**Price and Availability Upon Request.**



**T-BOLT CLAMPS – STAINLESS STEEL BAND & BOLT**

Apache P/N	MFG#	I.D. Min/Max	Nominal I.D.	Qty.Pkg.	Wt.Ea.
43081850	STBC150	1-3/8" – 1-9/16"	1-1/2"	25	.113#
43081852	STBC175	1-5/8" – 1-13/16"	1-3/4"	25	.119#
43081853	STBC188	1-3/4" – 1-15/16"	1-7/8"	25	.125#
43081856	STBC200	1-7/8" – 2-1/16"	2"	25	.125#
43081858	STBC225	2-1/8" – 2-5/16"	2-1/4"	25	.125#
43081860	STBC238	2-1/4" – 2-7/16"	2-3/8"	25	.134#
43081862	STBC250	2-3/8" – 2-9/16"	2-1/2"	25	.136#
43081864	STBC256	2-11/32" – 2-5/8"	2-9/16"	25	.125#
43081866	STBC263	2-13/32" – 2-11/16"	2-5/8"	25	.125#
43081868	STBC275	2-17/32" – 2-13/16"	2-3/4"	25	.125#
43081872	STBC300	2-25/32" – 3-1/16"	3"	25	.188#
43081874	STBC312	2-29/32" – 3-3/16"	3-1/8"	25	.197#
43081876	STBC325	3-1/32" – 3-5/16"	3-1/4"	25	.188#
43081878	STBC350	3-9/32" – 3-9/16"	3-1/2"	25	.188#
43081880	STBC375	3-17/32" – 3-13/16"	3-3/4"	25	.188#
43081882	STBC400	3-25/32" – 4-1/16"	4"	25	.188#
43081886	STBC450	4-9/32" – 4-9/16"	4-1/2"	25	.188#
43081888	STBC475	4-17/32" – 4-13/16"	4-3/4"	25	.188#
43081890	STBC550	5-9/32" – 5-9/16"	5-1/2"	25	.188#
43081896	STBC575	5-17/32" – 5-13/16"	5-3/4"	25	.188#
43081900	STBC650	6-9/32" – 6-9/16"	6-1/2"	25	.203#
43081908	STBC750	7-9/32" – 7-9/16"	7-1/2"	25	.250#

**STYLE STBC:** 3/4" wide 300 series stainless steel band, .025" thick. Opens 1/16" above and tightens 1/8" smaller than nominal I.D. for a total of 3/16" range for clamps STBC150 through STBC250. Opens 1/16" above and tightens 7/32" smaller than nominal I.D. for a total of 9/32" range for clamps STBC256-750. 300 series stainless steel bolt. Torque rating 50 in/lbs.

**DOUBLE BOLT HOSE CLAMP – WITH SADDLES**

Apache P/N	Hose O.D. From-To	MFG#	Wt.Ea.
43095501	3-1/2" – 3-13/16"	400	1.60#
43095503	3-25/32" – 4-1/16"	431	2.00#
43096001	4-1/32" – 4-9/32"	463	1.80#
43096508	4-1/4" – 4-15/16"	525	2.40#
43097008	4-1/2" – 5-1/4"	550	2.60#
43097504	5-1/8" – 5-11/16"	600	2.60#
43097506	5-11/16" – 5-15/16"	639	2.59#
43098004	5-15/16" – 6-1/2"	675	2.65#
43098500	6-1/2" – 7-9/16"	769	3.81#
43098520	7-11/16" – 8-3/16"	818	5.03#
43099507	8-1/4" – 8-7/8"	875	4.72#
43100009	8-15/16" – 9-7/8"	988	5.90#
43100505	9-15/16" – 11-3/8"	1125	7.60#
43101005	11-3/16" – 13"	1275	9.10#
43101007	13-3/16" – 15"	1450	16.77#
43101010	15-1/16" – 17-1/2"	1700	19.50#

**Construction:** A rugged, plated malleable iron 2-bolt clamp with machine bolts and hex nuts. Inner surface has dual gripping ridges. Bolt lugs are reinforced to prevent them from bending out of alignment.

**Note:** Measure hose O.D. accurately before ordering clamps.

## WORM GEAR CLAMPS



### ALL STAINLESS STEEL

Apache P/N	Clamp Min.	Dia.Max.	MFG#	Qty.Bx.	Wt.Bx.
48000509	3/8"	7/8"	620006	10	.50#
48001009	7/16"	1"	620008	10	.50#
48001505	1/2"	1-1/8"	620010	10	.50#
48002005	1/2"	1-1/4"	620012	10	.50#
48002501	3/4"	1-1/2"	620016	10	.50#
48003001	3/4"	1-3/4"	620020	10	.60#
48003508	1"	2"	620024	10	.60#
48004008	1-5/16"	2-1/4"	620028	10	.70#
48004504	1-9/16"	2-1/2"	620032	10	.70#
48005004	7/8"	2-3/4"	620036	10	.70#
48005500	1-1/8"	3"	620040	10	.80#
48006000	1-5/16"	3-1/4"	620044	10	.80#
48006507	1-5/8"	3-1/2"	620048	10	.90#
48007007	1-7/8"	3-3/4"	620052	10	1.00#
48007252	2-1/8"	4"	620056	10	1.00#
48008003	2-5/8"	4-1/2"	620064	10	1.10#
48008518	3-1/8"	5"	620072	10	1.10#
48009018	3-5/8"	5-1/2"	620080	10	1.40#
48009506	4-1/4"	6"	620088	10	1.50#
48010008	4-3/4"	6-1/2"	620096	10	1.50#
48010504	4"	7"	620104	10	1.60#

**Applications:** Especially suited for construction, agricultural, and Industrial applications.

**Clamps Feature:** All stainless steel construction and a full size 9/16" band. The wider band provides 12-1/2% more scaling surface area than conventional 1/2" bands.

**Screw:** 5/16" hex-head. 410 grade stainless steel.

**Band and Housing:** 9/16" wide and 300 grade stainless steel.

**Other Sizes, Styles, Price, and Availability Upon Request.**

## POLYPROPYLENE STRAINERS



### POLY LINE STRAINERS

Apache P/N	Description	Wt.Ea.
70002760	1-1/2" FNPT	.25#
70002780	2" FNPT	.30#
70002800	3" FNPT	.60#

**Applications:** Suction hose strainer, for use when a foot valve is not required. Strainer helps to keep pump damaging solids from entering the pump.

**Construction:** Polypropylene strainer is rust, chemical, and salt water resistant.

## STRAINERS - PLATED STEEL

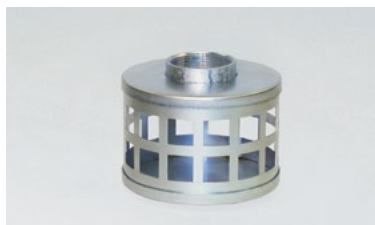


### ROUND HOLE

Apache P/N	Description	Wt.Ea.
70000008	1-1/2" FNPT	1.36#
70000504	2" FNPT	1.78#
70000700	2-1/2" FNPT	2.02#
70001500	3" FNPT	3.08#
70002000	4" FNPT	2.90#
70002507	6" FNPT	6.04#

**Applications:** Suction hose strainer for use when a foot valve is not required. Helps to keep pump damaging solids from entering the pump.

**Construction:** Plated steel for rust and crush resistance.



### SQUARE HOLE

Apache P/N	Description	Wt.Ea.
70009700	1-1/2" FNPT	1.12#
70009702	2" FNPT	1.74#
70009704	2-1/2" FNPT	2.00#
70009706	3" FNPT	2.50#
70009708	4" FNPT	2.52#
70009710	6" FNPT	6.32#

**Applications:** Use as a suction hose strainer for trash pumps. Large strainer openings allow smaller solids to pass through the pump, but keeps the larger pump damaging solids out.

**Construction:** Plated steel for rust and crush resistance.



### LONG NARROW

Apache P/N	Description-Size	Wt.Ea.
70000545	1-1/2"	1.3#
70000550	2"	1.4#
70000555	2-1/2"	1.6#
70000560	3"	3.0#
70000565	4"	4.0#

**Applications:** For suction hose strainer use when a foot valve is not required. Helps to keep pump damaging solids from entering the pump.

**Construction:** Plated steel for rust and crush resistance.



### SKIMMER STRAINERS - PLATED STEEL

#### TOP HOLE

Apache P/N	Description	Wt.Ea.
70009740	1-1/2" FNPT	2.63#
70009732	2" FNPT	3.00#
70009734	3" FNPT	6.18#

#### BOTTOM HOLE

Apache P/N	Description	Wt.Ea.
70009730	1-1/2" FNPT	2.63#
70009742	2" FNPT	3.00#
70009744	3" FNPT	6.18#

**Applications:** Slim design is especially suited for shallow applications where a foot valve is not required. Skimmers eliminate the chance of damaging solids from entering the pump.

**Construction:** Plated steel for rust and crush resistance.



## FOOT VALVES



### CAST IRON w/LEATHER FLAPPER

Apache P/N	Description	Wt.Ea.
70003007	1-1/2" FNPT	2.75#
70003503	2" FNPT	4.50#
70003511	2-1/2" FNPT	6.73#
70004003	3" FNPT	7.54#
70004518	4" FNPT	20.05#
70005018	6" FNPT	50.75#
70005022	8" FNPT	100.00#

**Applications:** For use in irrigation, drainage, and construction projects.

**Construction:** Valve has a leather flapper check to prevent the pump from losing its prime when shut down. Built in strainer helps keep foreign objects from entering the pump during operation. Foot valve has female NPT threads and a replaceable valve leather.

### REPLACEMENT FOOT VALVE LEATHER FLAPPER

Apache P/N	Description	Wt.Ea.
70006027	1-1/2"	.003#
70006028	2"	.004#
70006030	2-1/2"	.006#
70006502	3"	.006#
70007002	4"	.008#
70007509	6"	.008#
70008009	8"	.008#

## PRESSURE / VACUUM GAUGES

GAUGES FOR USE WITH AIR, WATER, HYDRAULIC, AND VACUUM SYSTEMS.

### SILICONE LUBRICATED 1/8" MNPT LOWER MOUNT

Apache P/N	1-1/2" Face	Wt.Ea.
99019276	0-60 P.S.I.	.15#
99019278	0-100 P.S.I.	.15#
99019280	0-200 P.S.I.	.15#

### DRY PRESSURE 1/4" MNPT LOWER MOUNT

Apache P/N	2-1/2" Face	Wt.Ea.
99019005	0-60 P.S.I.	.35#
99019268	0-100 P.S.I.	.35#
99019269	0-160 P.S.I.	.35#
99019270	0-400 P.S.I.	.35#
99019272	0-1000 P.S.I.	.35#
Apache P/N	4-1/2" Face	Wt.Ea.
99019274	0-100 P.S.I.	.85#

### GLYCERINE FILLED 1/4" MNPT LOWER MOUNT

Apache P/N	2-1/2" Face	Wt.Ea.
99019281	0-60 P.S.I.	.45#
99019282	0-100 P.S.I.	.45#
99019284	0-400 P.S.I.	.45#
99019286	0-1000 P.S.I.	.45#
99019288	0-3000 P.S.I.	.45#
99019290	0-5000 P.S.I.	.45#

### DRY VACUUM 1/4" MNPT LOWER MOUNT

Apache P/N	2-1/2" Face	Wt.Ea.
99019266	30" Hg Vac/0/60 P.S.I.	.30#
99019267	30" Hg Vac/0/100 P.S.I.	.30#

**Applications:** For use with air, water, hydraulic, and vacuum systems.

**Available In:** Dry, glycerine filled, and silicone lubricated styles.

**MANHOLE BLOWER HOSE (YELLOW w/BLACK WEAR STRIP)****ASSEMBLIES**

Apache P/N	I.D. x Length	MBR	Wt.Ea.
14010700	8" x 15'	4.6"	9.0#
14010706	8" x 25'	4.6"	15.0#

**Application:** Use for moving large volumes of air, smoke, or fumes in both portable and temporary ventilation and exhaust systems. Ideal for blower applications where a lighter weight, yet rugged ducts is required.

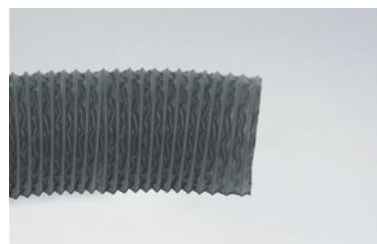
**Construction:** Single-ply polyester reinforced PVC construction with an external vinyl wear strip. Hose is wire reinforced for crush resistance. Cuffs on each end are factory installed.

**Flame retardant to UL 94V-0.**

**Features:** Hose is lightweight and extremely compressible for easy storage and transport.

**Temp. Range:** -20°F to 160°F. **Diameter Range:** 6" to 24" I.D.

**Assemblies in Other Lengths Available Upon Request.**

**CW-GP AIR DUCTING (BLACK)****BULK HOSE**

Apache P/N	I.D.	Wt.Ft.
14001018	1-1/2"	.20#
14002006	2"	.25#
14003002	2-1/2"	.30#
14003509	3"	.35#
14004505	4"	.57#
14005501	5"	.72#
14006508	6"	.95#
14007008	7"	1.02#
14007504	8"	1.09#
14007524	9"	1.20#
14008004	10"	1.36#
14008500	12"	1.60#
14009002	14"	2.50#
14009015	16"	2.90#
14009016	18"	3.30#
14009025	20"	3.60#
14009028	24"	4.30#

**Applications:** General purpose applications. For low pressure air handling, fume control, welding fume ventilation, car wash drying, and dust collection.

**Construction:** Double-ply neoprene polyester construction with spring steel wire reinforcement offers exceptional flexibility and greater durability than 2-ply cotton hoses.

**Flame retardant to UL 94V-0.**

**Features:** Neoprene coating offers excellent flexibility and durability, hose is chemical, abrasion, and weather resistant. Handles both positive and negative pressures.

**Temp. Range:** -40°F to 250°F. **Diameter Range:** 1-1/2" to 24" I.D. **Std. Length:** 25'.

**LAWN AND LEAF VACUUM COLLECTION HOSE**

Quality	Product	Description	Size	Length Std.
Good	R-2 (R-2 Clear)	Plastic	2"-18"	25'
Better	T-7	TPR	2"-18"	25' & 50'
Best	FLX-Thane I	Urethane	2"-18"	50'
Industrial	CWC-W	Rubber	4"-24"	25'

**Application:** Use for municipal leaf collection, gutter cleaning, debris pickup, golf course lawn and leaf collection, and also factory, airport, and parking lot debris vacuum pickup.

**Price and Availability Upon Request.**

**SANDBLAST DUST CONTROL HOSE AND DUCTING**

Quality	Product	Description	Size	Length Std.
Good	CWC-W	Rubber	4"-24"	25'
Better	FSP-II	Plastic	4"-24"	25'
Best	Bridge Hose	Plastic	4"-24"	25'

**Application:** Use for both portable and truck mounted sandblast or shotblast equipment.

Applications include dust collection in bridge and building sandblasting, highway, runaway and concrete shot blasting.

**Price and Availability Upon Request.**



## LIGHTWEIGHT CORRUGATED MATERIAL HANDLING HOSE



### L-18 RUBBER DUCT – BULK HOSE

Apache P/N	I.D. x O.D.	Length	MBR	W.P.	Wt.100'
12026740	2" x 2.37"	100'	4"	35#	49.0#
12026741	3" x 3.48"	100'	6"	30#	91.0#
12026742	4" x 4.55"	100'	9"	25#	145.0#
12026750	5" x 5.65"	100'	10"	25#	208.0#
12026752	6" x 6.78"	100'	12"	25#	286.0#

**Applications:** Designed for lightweight material that can be moved by air, such as rockwool, fiberglass, dust, etc. Suitable for dust control in wood working, grain and cement handling, and as ventilation ducting where dust is a work hazard.

**Construction:** Abrasion resistant rubber compounds to dissipate static with a rigid PVC helix.

**Temp. Range:** -30°F to 140°F. **W.P., & MBR:** Applicable @68°F.

### R-18 RUBBER SUCTION – BULK HOSE

Apache P/N	I.D. x O.D.	Length	MBR	W.P.	Wt.100'
12026791	1-1/2" x 1.88"	100'	3"	50#	38.0#
12026792	2" x 2.41"	100'	4"	40#	54.0#
12026793	2-1/2" x 2.98"	100'	5"	35#	77.0#
12026794	3" x 3.54"	100'	6"	35#	105.0#
12026795	3-1/2" x 4.04"	100'	8"	30#	125.0#
12026796	4" x 4.65"	100'	8"	30#	168.0#
12026798	5" x 5.77"	100'	9"	30#	240.0#
12026800	6" x 6.86"	100'	12"	25#	321.0#
12026802	8" x 9.10"	50'	16"	25#	577.0#

**Applications:** Ideally suited for dry material handling of abrasive products such as grain, iron ore, crushed rock, sand, cement, powders, and gravel.

**Construction:** Abrasion resistant rubber compounds to dissipate static with a rigid PVC helix.

**Features:** Flexible. **Temp. Range:** -30°F to 140°F. **W.P., & MBR:** Applicable @68°F.

## MATERIAL HANDLING HOSE – BULK COMMODITY



### BULK HOSE

Apache P/N	I.D. x O.D.	Length	Vac Rate	MBR	W.P. Max.	Wt.Ft.
12027095	2" x 2-25/32"	100'	30"/HG	16"	60#	1.66#
12027100	3" x 3-13/16"	100'	30"/HG	24"	60#	2.53#
12027105	4" x 4-7/8"	100'	30"/HG	32"	45#	3.22#
12027110	4-1/2" x 5-23/64"	50'	30"/HG	36"	40#	3.57#
12051005	5" x 5-55/64"	50'	30"/HG	40"	40#	3.94#
12051010	6" x 6-55/64"	50'	30"/HG	48"	40#	4.65#

**Applications:** Use for bulk materials via suction, gravity, or pneumatic systems where abrasion resistance is the primary requirement. For use in the dry cement, sand, gravel, feed, seed, and slurry application industries.

**Construction:** Cover is black corrugated with a gray spiral stripe, tube is 3/16" black, static conductive rubber, and hose is reinforced with synthetic, high tensile textile with a steel wire helix.

**Temp. Range:** -40°F to 150°F.

## PURE GUM BOOT/SLEEVE



### BULK HOSE

Apache P/N	I.D. x O.D.	Length Std.	Wt.Ft.
15040555	7" x 7-1/2"	50'	2.40#
15040560	8" x 8-1/2"	50'	2.80#
15040525	9" x 9-1/2"	17'	3.20#
15040570	10" x 10-1/2"	30'	3.50#
15040575	12" x 12-1/2"	30'	4.20#
15040579	16" x 16-1/2"	12'	5.50#
15040580	18" x 18-1/2"	10'	6.20#
15040585	20" x 20-1/2"	12'	7.00#
15040590	22" x 22-1/2"	12'	7.60#
15040595	24" x 24-1/2"	12'	8.30#

**Applications:** Designed for low pressure discharge. Use this lightweight flexible drop hose as a chute to unload or place wet or dry materials.

**Construction:** "Tan" pure gum natural rubber. This material is extremely flexible and non-marking, excellent abrasion and low temperature resistance. It resists most organic salts, ammonia, acids, and alkalis, but is not oil resistant.

**WARNING:** For open end discharge only!

## RUBBER ELEPHANT TRUNK



### BULK HOSE

**Applications:** Designed for low pressure discharge. Use this lightweight flexible drop hose as a chute to unload or place wet or dry materials.

**Construction:** Heavy duty abrasion resistant tube reinforced with nylon fabric that resists cuts, scuffs, and gouges. All purpose SBR cover is ozone resistant.

**Available In:** 6", 8", 10", 12", 14", 16", 18", and 20". **Lengths:** Up to 50'.

**Price and Availability Upon Request.**

**WARNING: For open end discharge only!**

## DREDGE SLEEVE



### BULK HOSE

**Application:** A flexible connector between sections of pipe in dredging operations.

**Construction:** Tube is 3/8" abrasion-resistant rubber reinforced with multiple plies of synthetic polyester fabric. The cover is also abrasion resistant rubber.

**Available In:** Pipe Sizes 4-1/2" to 14" pipe O.D.

**Price, Other Tube Thicknesses, and Availability Upon Request.**

## SAND SUCTION HOSE



### BULK HOSE

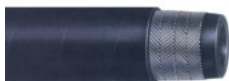
**Application:** A heavy duty suction hose especially designed to withstand the severest service in dredging operations and in sand and gravel pits.

**Construction:** Heavy gauge, abrasion-resistant tube. The reinforcement is a spiral wire helix between multiple plies of synthetic fabric. The cover is a tough, abrasion-resistant rubber compound.

**Available In:** Pipe Sizes 10" to 18". **Fittings:** Built-in steel nipples, plain or enlarged ends.

**Price and Availability Upon Request.**

## PLASTER/GROUT HOSE



### ASSEMBLIES

#### CPLD. STEEL INTERNALLY EXPANDED MALE NPT FITTINGS

Apache P/N	I.D. x Length	W.P.	MBR	Wt.Ea.
13002926	1-1/2" x 50'	800#	10'	63.5#
13002930	2" x 50'	800#	12'	69.0#

#### CPLD. STEEL INTERNALLY EXPANDED VICTAULIC FITTINGS

Apache P/N	I.D. x Length	W.P.	MBR	Wt.Ea.
13002932	1-1/2" x 50'	800#	10'	63.5#
13002934	2" x 50'	800#	12'	69.0#

**Application:** Multi-purpose plaster / grout hose. Excellent kink resistance yet flexible and easy to handle.

**Construction:** Abrasion resistant tube, reinforced with multi-spiral polyester yarn. Cover is abrasion and ozone resistant.

**Temp. Range:** -40°F to 200°F.

**Assemblies:** Factory coupled with internally expanded steel couplings.

**Available In:** 1-1/2" & 2" with lengths up to 100'.

## GUNITE HOSE



### ASSEMBLIES

#### CPLD. STEEL INTERNALLY EXPANDED MALE NPT FITTINGS

Apache P/N	I.D. x Length	W.P.	Wt.Ea.
13002936	1-1/2" x 50'	150#	76.00#
13002937	2" x 50'	150#	96.50#

#### CPLD. STEEL INTERNALLY EXPANDED VICTAULIC FITTINGS

Apache P/N	I.D. x Length	W.P.	Wt.Ea.
13002938	1-1/2" x 50'	150#	76.00#
13002939	2" x 50'	150#	96.50#

**Application:** Easy handling hose for air pumping dry sand/cement mixtures to the water mixing nozzle in Gunite applications. Suitable for use in the transfer of other abrasive materials, wet and dry.

**Construction:** Hose has a high abrasion resistant tube with a non-marking cover and includes a static grounding wire in the hose body.

**Temp. Range:** -40°F to 190°F.

**Assemblies:** Factory coupled with internally expanded steel couplings.

## CONCRETE PUMP HOSE



### BULK HOSE

**Application:** Multi-purpose concrete placement hose. Specially made to be used with wet abrasive material. Excellent kink resistance yet flexible and easy to handle.

**Construction:** Abrasion resistant tube, reinforced with multi-spiral polyester yarn.

Cover is abrasion and ozone resistant.

**Available In:** 2", 2-1/2", 3", 4", & 5", with lengths up to 100'.

**Price and Availability Upon Request.**

## HOT AIR BLOWER HOSE



### BULK HOSE

Apache P/N	I.D. x O.D.	MBR	Wt.100'
12046815	3" x 3-11/16"	15"	2.0#
12046816	4" x 4-11/16"	18"	2.8#

**Application:** Use for the delivery of bulk dry materials in the air supply service.

**Construction:** Tube is reinforced with high tensile cord interwoven with spirals of steel wire and textile. EPDM cover.

**Temp. Range:** Up to 350°F.

**Benefits:** Cover is resistant to heat, weather, and ozone.

**Available In:** 3" & 4" with lengths up to 100'.

**Price and Availability Upon Request.**

## DRY CARGO HOSE



### BULK HOSE

Apache P/N	I.D. x O.D.	MBR	Wt.100'
13002580	4" x 4-1/2"	48"	1.6#
13002530	4-1/2" x 5"	54"	1.8#
13002836	5" x 5-1/2"	60"	2.0#

**Application:** Pneumatic transfer of bulk cement and other dry bulk materials.

**Construction:** Hose features collapsible construction. Tube is reinforced with high tensile synthetic fabric and cover provides excellent abrasion resistance.

**Temp. Range:** -40°F to 150°F.

**Std. Length:** 100'.

**Price and Availability Upon Request.**

## SANDBLAST HOSE



### ASSEMBLIES

Apache P/N	I.D. x Length	W.P.	Wt.Ea.
97113505	3/4" x 25'	150#	19.0#
97113515	1" x 25'	150#	25.0#
97113525	1-1/4" x 25'	150#	31.8#
97113528	1-1/2" x 25'	150#	38.5#
97116250	3/4" x 50'	150#	37.2#
97116260	1" x 50'	150#	49.2#
97116270	1-1/4" x 50'	150#	62.3#
97116230	1-1/2" x 50'	150#	75.0#

### BULK HOSE

Apache P/N	I.D. x O.D.	W.P.	MBR	Wt.Ft.
11028519	1/2" x 1-1/16"	175#	3.0"	.49#
11029000	3/4" x 1-1/2"	175#	4.5"	.73#
11029507	1" x 1-7/8"	150#	6.0"	.97#
11030009	1-1/4" x 2-5/32"	150#	7.5"	1.22#
11030505	1-1/2" x 2-3/8"	150#	9.0"	1.46#

**Applications:** Use in shot and sandblasting operations to clean/polish metal, stone, and glass surfaces.

**Construction:** Abrasion resistant black static conducting tube. Reinforced with 2-spiral plies of synthetic cord. The cover is black SBR.

**Assemblies:** 2-lug hose end on each end or 2-lug hose end on one end and a nozzle holder on the other (please specify).

**Temp. Range:** -40°F to 190°F.

## ALUMINUM SANDBLAST COUPLINGS



## QUICK DISCONNECT END – 2 LUG

Apache P/N	Hose (I.D. x O.D.)	Wt.Ea.
43123009	3/4" x 1-1/2"	.36#
43123505	1" x 1-7/8"	.36#
43124005	1-1/4" x 2-5/32"	.66#
43124501	1-1/2" x 2-3/8"	.88#



## EXTERNAL NOZZLE HOLDER

Apache P/N	Hose (I.D. x O.D.)	Thread	Wt.Ea.
43125506	3/4" x 1-1/2"	1-1/4" FNPS	.30#
43125508	1" x 1-7/8"	1-1/4" FNPS	.36#
43126008	1-1/4" x 2-5/32"	1-1/4" FNPS	.52#
43126010	1-1/2" x 2-3/8"	1-1/4" FNPS	.98#



## FEMALE ADAPTER

Apache P/N	I.D.	Thread	Wt.Ea.
43124035	1-1/4"	FNPT	.34#
43124518	1-1/2"	FNPT	.28#



## NATURAL RUBBER SANDBLAST GASKETS

Apache P/N	Description	Wt.Ea.	Gskt.
43127004	Sold in Bags of 10 Each		.024#

**Assemblies:** Specifically designed for sand blast service, these alloy fittings have collars that fit over the hose, allowing hose sections to virtually butt together in a leak-proof joint. This permits a high speed, straight through flow with a minimum of interference and resulting turbulence.

## GREASE GUN EXTENSION HOSE



### ASSEMBLIES

Apache P/N	Description	W.P.	Wt.Ea.
98398403	3/16" I.D. x 12"	3000#	.11#
98398409	3/16" I.D. x 18"	3000#	.13#
98398412	3/16" I.D. x 24"	3000#	.16#

### BULK HOSE

Apache P/N	I.D. x O.D.	Burst	MBR	W.P.	Wt.Ft.
39001250	3/16" x .415" 100R7	12,000#	3.5"	3000#	.052#

### COUPLING

Apache P/N	Description	Wt.Ea.
39002125	1/8" MNPT	.03#

**Applications:** For use with hand and air powered grease guns.

**Construction:** Two-braids of high-tensile textile reinforcement.

**Assemblies:** Coupled with a 1/8" MNPT on each end.

**Features:** Hose is lightweight and flexible.

**Temp. Range:** -40°F to 200°F (-40°C to 93°C).

**Other Lengths Available Upon Request.**

## HYDRAULIC QUICK DISCONNECTS



**Applications:** Quick release hydraulic adapters are for use in the construction, industrial and agricultural markets on road paving equipment, concrete and asphalt machinery, graders, loaders, tractors, aerial platforms, mining, dock and rail yards, etc.

**A WIDE SELECTION OF POPPET, FLAT FACE AND SPECIALTY STYLES ARE AVAILABLE. CONTACT CUSTOMER SERVICE FOR PRICES AND AVAILABILITY.**

## ADDITIONAL HYDRAULIC PRODUCTS/SERVICES



### HOSE

• Extremely High to Low Pressure • Thermoplastic • Teflon® • Refrigerant • Hot Oil

### COUPLINGS

• Permanent • Reusable • Specialty • O-Ring Flange • Metric • Adapters • Quick Disconnects

### ACCESSORIES

• Gauges • Protective Hose Sleeves • Spring/Hose Guards • Bend Restrictors

• Hose Cut Off Blades • Crimpers

**CALL CUSTOMER SERVICE WITH THE BRAND / MODEL # OF YOUR EQUIPMENT FOR A GATES QUICK-PIK™ AND AIM™ HYDRAULIC RECOMMENDATION.**

## GATES QUICK PICK AND AIM PROGRAMS



### GATES QUICK-PICK

Gates Quick Pick (quick part number interchange) cuts the job of identifying replacement assemblies down to size. This one-of-a-kind computer program interchanges manufacturers part numbers with the Gates replacement. No waiting, no guessing, no hassles. JUST THE RIGHT REPLACEMENT PART.

### OFFERS COMPLETE COVERAGE

With more than 75,000 part numbers, Quick Pic includes parts for manufacturers like Caterpillar, Komatsu, John Deere, J.I. Case, VME, Hitachi, and more. Now you have an alternative to high-priced, hard-to-get original equipment parts.

### REDUCES DOWNTIME

Quick-Pic pin points the replacement assembly in minutes, listing components and assembly instructions according to the manufacturers specifications

### QUALITY AND RELIABILITY

Gates stands for quality and reliability. With one source for all your hose replacement needs, you will always receive the brand you trust.

### GATES AIM®

Gates Aim (accurate inventory manager) eliminates the guess work of what to stock, matching your distributors inventory to your exact needs.

**CONTACT APACHE CUSTOMER SERVICE TO FIND OUT MORE ABOUT THE GATES COMPUTERIZED INVENTORY SUPPORT PROGRAMS AND HOW WE CAN SAVE YOU TIME AND MONEY.**

## GATES HYDRAULIC HOSE



### SAE 100R1AT (G1) - BULK HOSE

Apache P/N	I.D. x O.D.	Burst	MBR	W.P.	Wt.Ft.
38000680	1/4" x .53"	13,100#	4.0"	3,275#	.16#
38000700	3/8" x .69"	10,400#	5.0"	2,600#	.23#
38000710	1/2" x .82"	9,300#	7.0"	2,325#	.29#
38000730	3/4" x 1.10"	6,100#	9.5"	1,525#	.42#
38000740	1" x 1.41"	5,100#	12.0"	1,275#	.62#

**Applications:** Medium pressure hydraulic oil lines. Meets/exceeds SAE 100R1AT requirements.

**Construction:** Tube is black, oil resistant synthetic rubber (nitrile). Cover is black, oil and abrasion resistant synthetic rubber (modified nitrile). No skiving required with "Type T," reusable or Power Crimp® couplings.

**Reinforcement:** One braid of high-tensile steel wire.

**Rec. CPLGS:** MegaCrimp®, reusable "Type T," permanent PC stems & ferrules.

**Temp. Range:** -40°F to 212°F (-40°C to 100°C).



## GATES HYDRAULIC HOSE



## SAE 100R2AT (G2) – BULK HOSE

Apache P/N	I.D. x O.D.	Burst	MBR	W.P.	Wt.Ft.
38000420	1/4" x .58"	23,200#	4.0"	5,800#	.27#
38000430	3/8" x .73"	19,200#	5.0"	4,800#	.37#
38000440	1/2" x .86"	16,000#	7.0"	4,000#	.44#
38000460	3/4" x 1.14"	12,400#	9.5"	3,100#	.63#
38000470	1" x 1.48"	9,600#	12.0"	2,400#	.96#
38000480	1-1/4" x 1.87"	7,300#	16.5"	1,825#	1.50#

**Applications:** High pressure hydraulic oil lines. Meets/exceeds SAE 100R2AT requirements.

**Construction:** Black, oil resistant synthetic rubber (nitrile) tube. Cover is black, oil and abrasion resistant thin synthetic rubber. No skiving required with MegaCrimp®, "Type T," or Power Crimp® couplings. **Reinforcement:** Two braids of high-tensile steel wire.

**Rec. Cplgs:** MegaCrimp®, reusable "Type T", and permanent PC stems/ferrules.

**Temp. Range:** -40°F to 212°F (-40°C to 100°C).



## EXTRA FLEXIBLE 100R17 (M3K) – BULK HOSE

Apache P/N	I.D. x O.D.	Burst	MBR	W.P.	Wt.Ft.
38000648	1/4" x .47"	12,000#	2.0"	3000#	.12#
38000650	3/8" x .62"	12,000#	2.5"	3000#	.21#
38000652	1/2" x .78"	12,000#	3.5"	3000#	.30#
38000654	5/8" x .98"	12,000#	4.0"	3000#	.54#
38000656	3/4" x 1.14"	12,000#	4.8"	3000#	.67#
38000658	1" x 1.48"	12,000#	6.0"	3000#	1.06#

**Applications:** High pressure hydraulic oil lines. Meets SAE 100R17 requirements. M3K hose has smaller exterior dimensions and significantly tighter bend radii than other SAE 100R1/100R2 hoses.

**Construction:** Tube is black, oil resistant synthetic rubber (-4 to -16, nitrile). Cover is black, oil, abrasion, and weather resistant synthetic rubber (-4 to -16, modified nitrile). **Reinforcement:** braided high-tensile steel wire. **Sizes:** -4, -6, & -8 are one-braid, -10, -12, & -16 are two-braid.

**Rec. Cplgs:** MegaCrimp®, permanent PC stems/ferrules, and 16M3k also uses PCS stems/ferrules.

**Temp. Range:** -40°F to 212°F (-40°C to 100°C).



## M4K+ (REELS) – BULK HOSE

Apache P/N	I.D. x O.D.	Burst	MBR	W.P.	Wt.Ft.
38000578	1/4" x .54"	16,000#	2.0"	4000#	.22#
38000579	3/8" x .69"	16,000#	2.5"	4000#	.31#
38000580	1/2" x .86"	16,000#	3.5"	4000#	.47#
38000659	3/4" x 1.14"	16,000#	4.8"	4000#	.67#

**Applications:** For high pressure hydraulic applications. Provides tighter than standard minimum bend radius and greater flexibility for easier plumbing.

**Construction:** Black oil resistant synthetic rubber (nitrile) tube. Cover is black oil, abrasion, and weather resistant synthetic rubber.

**Reinforcement:** Two braids of high tensile steel wire.

**Rec. CPLGS:** MegaCrimp® one piece coupling system.

**Temp. Range:** -40°F to 212°F (-40°C to 100°C).



## SAE 100R4 (GMV) – BULK HOSE

Apache P/N	I.D. x O.D.	Burst	MBR	W.P.	Wt.Ft.
38001536	3/4" x 1.22"	1400#	2.5"	350#	.45#
38001537	1" x 1.45"	1200#	3.0"	300#	.54#
38001539	1-1/4" x 1.76"	1000#	4.0"	250#	.77#
38001541	1-1/2" x 2.01"	650#	5.0"	162#	.91#
38001543	2" x 2.51"	450#	6.0"	112#	1.16#
38001545	2-1/2" x 3.02"	275#	7.0"	68#	1.39#
38001547	3" x 3.51"	250#	9.0"	62#	1.63#
38001549	3-1/2" x 4.01"	225#	10.0"	56#	1.80#

**Applications:** Petroleum and water based hydraulic fluids in suction lines or in low pressure return lines. Meets/exceeds SAE 100R4 requirements. Uses half the bend radius of SAE 100R4.

**Construction:** Black, synthetic nitrile rubber tube specifically designed for resistance to high temps.

**Reinforcement:** Double spiral with helical spiral wire to prevent collapse.

APACHE STOCKS A WIDE VARIETY OF ONE AND TWO PIECE CRIMP ON FITTINGS, REUSABLE COUPLINGS AND HYDRAULIC ADAPTERS.

CONTACT CUSTOMER SERVICE FOR ADDITIONAL INFORMATION.

## STEAM HOSE



## BULK HOSE - BLACK

Apache P/N	I.D. x O.D.	W.P.	Wt.Ft.
11027200	1/2" x 1-1/16"	250#	.38#
11027201	3/4" x 1-9/32"	250#	.52#
11027202	1" x 1-17/32"	250#	.77#
11013588	1-1/4" x 1-7/8"	250#	1.24#
11013609	1-1/2" x 2-3/16"	250#	1.44#
11013692	2" x 2-11/16"	250#	1.88#

**Application:** For high pressure saturated and superheated steam service (up to 250 P.S.I. and 406°F) where cover may come in contact with oil or grease.

**Construction:** Carbon steel wire reinforcement. Black EPDM tube and cover.

**Temp. Range:** Up to 406°F.

**Couplings:** Assembled with permanent hydraulic crimp type or 2 and 4 bolt interlocking clamp and insert type couplings. "Boss" male stems and female ground joint fittings are recommended for steam service.

**Std. Bulk Length:** 50'

**Note:** Add 5% for red cover.

**STEAM HOSE WARNING:** The potential danger from steam in industrial hose applications is due to the great heat and pressures involved. Water changes to steam at higher temperatures when under pressure. The greater the pressure the higher the temperature required. If the steam escapes, tremendous quantities of heat are released very suddenly as the steam changes state (wet saturated, dry saturated, and super heated) and finally changes back to water. This, combined with the high pressure, provides the potential danger to operators. (Refer to RMA Publication Ip-11-1 Steam Hose; Manual for Maintenance, Testing and Inspection).

## RUBBER PRESSURE WASHER HOSE



## 3000# - 3/8" HOSE ASSEMBLIES

Apache P/N	Length	Coupled	Color	Wt.Ft.
98388073	25'	1/4" MPT x 1/4" Male Pipe Swivel	Black	5.4#
98388078	35'	1/4" MPT x 1/4" Male Pipe Swivel	Black	7.2#
98388075	25'	3/8" MPT x 3/8" Male Pipe Swivel	Black	5.4#
98388080	35'	3/8" MPT x 3/8" Male Pipe Swivel	Black	7.2#
98388085	50'	3/8" MPT x 3/8" Male Pipe Swivel	Black	11.9#
98382305	100'	3/8" MPT x 3/8" Male Pipe Swivel	Black	24.0#
98388076	25'	3/8" MPT x 3/8" Male Pipe Swivel	Blue	5.4#
98388081	35'	3/8" MPT x 3/8" Male Pipe Swivel	Blue	7.2#
98388086	50'	3/8" MPT x 3/8" Male Pipe Swivel	Blue	11.9#
98388087	75'	3/8" MPT x 3/8" Male Pipe Swivel	Blue	18.0#

**Applications:** Use as a replacement or extension hose on gas/electric pressure washers rated up to 3000 PSI. Use this hose for hot and cold water applications where heavy-duty, high-pressure cleaning equipment is required.

**Assemblies:** High-tensile steel, one wire braid hose with bend restrictor.

**Features:** Blue hose is non-marking.

**Temp Range:** Laboratory tested for normal service from -4°F to 210°F (-20°C to 99°C).

Other lengths and sizes available upon request.

**WARNING: Not for steam service.**

## 4000# - 3/8" HOSE ASSEMBLIES

Apache P/N	Length	Coupled	Color	Wt.Ft.
10085560	25'	3/8" MPT x 3/8" Male Pipe Swivel	Black	7.25#
10085563	25'	Metric - F x F, w/Male Metric Adapter	Black	7.25#
10085564	25'	Quick Disconnect - 3/8" Socket x 3/8" Plug	Black	7.25#
10085570	50'	3/8" MPT x 3/8" Male Pipe Swivel	Black	12.9#
10085573	50'	Metric - F x F, w/Male Metric Adapter	Black	12.9#
10085574	50'	Quick Disconnect - 3/8" Socket x 3/8" Plug	Black	12.9#

**Applications:** Use as a replacement or extension hose on gas/electric pressure washers rated up to 4000 PSI. Use this hose for hot and cold water applications where heavy-duty, high-pressure cleaning equipment is required.

**Assemblies:** High-tensile steel, two wire braid hose with two bend restrictors.

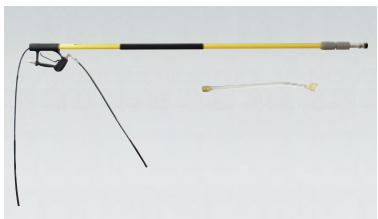
**Male Metric Adapter:** Use to connect two female metric ends together.

**Temp Range:** Laboratory tested for normal service from -4°F to 210°F (-20°C to 99°C).

Other lengths and sizes available upon request.

**WARNING: Not for steam service.**

## THREADED LANCES (WANDS)



### PLATED STEEL (INSULATED GRIP) WAND

Apache P/N	Length	Threads	W.P.	Wt.Ea
99023687	36" w/handle	1/4" MNPT	3600#	1.9#
99023343	59" w/handle	1/4" MNPT	3600#	2.8#

**Applications:** Use 1/4" MNPT zinc plated wand as a replacement or extension for original wand.

Molded grip insulates operator from heat when using hot water, and increases control and comfort when operating a pressure washer for extended periods of time.

**Installation:** Wand threads directly into outlet of gun, quick disconnect couplers can also be used for quick/easy connection of wand and accessories.

**Note:** These wands have a molded insulated grip. Other sizes available, bare or insulated.

**WARNING:** Under no circumstances point spray guns at humans or animals. Serious injury can result from the high pressure discharge produced by pressure washers.

### PLATED STEEL DUAL LANCE

Apache P/N	Inlet	W.P.	Temp.	G.P.M.	Wt.Ea
99023550	1/4" MNPT	3600#	300°F	11.0	2.8#

**Applications:** Allows high-pressure spray and low-pressure soap/chemical application without stopping to change tips. 1/4" MNPT insulated wand connects directly to the gun outlet, lance handle adjusts spray pattern from high to low pressure. Wand outlets are 1/4" FNPT with nozzle protecting bushings. Note: High-pressure screw type stainless steel spray tips not included.

### 18' 4000# TELESCOPING WAND

Apache P/N	Inlet-Outlet	W.P.	Max. Temp.	Wt.Ea
99023768-C	3/8" QD Plug x 1/4" Female Metric	4000#	140°F	15.0#

**Applications:** For use with hot or cold water pressure washers rated up to 4000 PSI. Eliminates the safety and time issues of using ladders. Wand extends from 6' to 18' for fast, easy access to high and hard to reach places from the ground.

**Construction:** The main body is fiberglass with two aluminum telescoping extensions. These easily extend or retract and lock at desired length.

**Installation:** Simply insert any accessory with a male metric fitting into end of wand.

**Includes:** 15" wand (quick disconnect socket x male metric) used for converting wand outlet to 1/4" quick disconnect socket for accepting spray nozzles and accessories.

## ADJUSTABLE LANCE HANDLE



Apache P/N	Description	Wt.Ea
99023341	Handle Grip	.35#

**Applications:** For use on all 1/4" wands. Insulated handle increases comfort and control when using a pressure washer for extended periods of time. Fully adjustable handle can easily be positioned for maximum results.

**Installation:** Place handle over wand, turn insulated grip to tighten. Handle can also be used with the Vented Lance Grip by threading directly into the side of the grip.

## PRESSURE WASHER SPRAY GUNS



### UNIVERSAL "NO WEEP" SPRAY GUN

Apache P/N	Inlet-Outlet	W.P.	Temp.	G.P.M.	Wt.Ea
99032088-C	3/8" x 1/4" FNPT	4000#	300°F	10.0	1.40#
99023462-C	3/8" x 1/4" FNPT	4500#	300°F	8.0	1.25#
99032000-C	3/8" x 1/4" FNPT	5000#	320°F	10.0	1.20#

**Applications:** Use as a replacement for original gun on pressure washers. Gun outlet accepts 1/4" MNPT wands and attachments.

**Installation:** Connect pressure washer hose to inlet on gun. Thread wand into 1/4" FNPT outlet. To remove, turn pressure washer off, pull trigger on gun to release water pressure, then disconnect.

**Features:** Safety lock on trigger reduces chance of accidental discharge.

**Note:** Additional adapter may be required to complete the connection, depending on your configuration. Use Teflon pipe tape on MPT threads to ensure a leak-free connection.

**WARNING:** Under no circumstances point spray guns at humans or animals. Serious injury can result from the high pressure discharge produced by pressure washers.

## SPRAY NOZZLES



### VARIABLE SPRAY NOZZLES

Apache P/N	Inlet	W.P.	Temp.	Orifice	Wt.Ea
99023465-C	1/4" FNPT	3000#	176°F	4.0	.40#
99023466-C	1/4" FNPT	3000#	176°F	4.5	.35#

**Applications:** General-purpose nozzle for most pressure washer situations. The push pull movement changes the spray from low (soap dispensing) to high pressure, turning the nozzle adjusts the spray pattern from a 0° to 80° fan.

**Installation:** Nozzle can be threaded directly onto 1/4" MNPT wand or for a quick/easy connection, use the optional QD socket and plug set.

**Note:** Use Teflon™ pipe tape on MNPT threads to ensure a leak-free connection.



### HARD/SOFT TURBO NOZZLE W/FILTER

Apache P/N	Inlet	PSI	Wt.Ea
99030688-C	1/4" Quick Disconnect Plug	3700#	1.00#

**Applications:** Turbo increases cleaning efficiency up to 200%, and filter extends the service life of the nozzle. Quick disconnects create a quick and easy "tool free" connection for nozzles and accessories.

**Features:** Push/pull movement to change from a soft spray (for cleaning wood) to high pressure. Easy clean filter; unscrew the quick disconnect plug from the turbo nozzle, then unscrew the filter to remove it for cleaning.

**Installation:** Requires a 1/4" quick disconnect socket on wand. Simply pull back on the quick disconnect socket collar to insert or release the hard/soft turbo nozzle. Quick disconnect socket also accepts other tips and accessories.



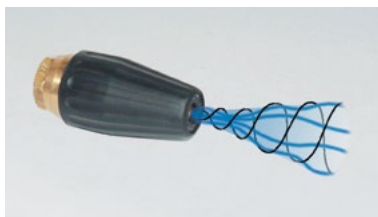
### TURBO NOZZLES

Apache P/N	Description	W.P.	Max. Temp.	Orifice	Wt.Ea
99032013-C	1/4" Female Pipe Thread	4000#	212°F	3.5	1.0#
99023505	1/4" Female Pipe Thread	5000#	212°F	5	1.6#
99023483	1/4" Female Pipe Thread	5000#	212°F	5.5	1.6#
99023489	1/4" Female Pipe Thread	5000#	212°F	6	1.6#
99023575	1/4" Female Pipe Thread	5000#	212°F	4.5	1.6#

**Applications:** Use turbo nozzle to increase the cleaning efficiency (up to 200%) of your pressure washer. This nozzle covers a larger area more quickly than other nozzles, saving cleaning time.

**Installation:** Nozzle can be threaded directly onto 1/4" male pipe thread wand, or for a quick and easy connection, use a quick disconnect plug.

**Note:** Using a turbo filter (#99030576-C) is recommended to prolong the service life of the nozzle. Use pipe tape on male pipe threads to ensure a leak-free connection. Other orifice sizes are available.



## QUICK DISCONNECT SPRAY TIPS



### QD SPRAY TIPS (5 PACK)

Apache P/N	Description	W.P.	Orifice	Wt.Ea
99023696	5 Ea. Color Coded QD Spray Tips	5000#	3.5	.24#
99023695	5 Ea. Color Coded QD Spray Tips	5000#	4.0	.24#

### QD SPRAY TIPS (INDIVIDUAL)

Apache P/N	Description	W.P.	Orifice	Degree	Wt.Ea
99023788	Red	5000#	3.5	0°	.05#
99023789	Yellow	5000#	3.5	15°	.05#
99023790	Green	5000#	3.5	25°	.05#
99023791	White	5000#	3.5	40°	.05#
99023780	Red	5000#	4.0	0°	.05#
99023781	Yellow	5000#	4.0	15°	.05#
99023782	Green	5000#	4.0	25°	.05#
99023783	White	5000#	4.0	40°	.05#

**Applications:** 5000# PSI, high-pressure QD tips allow you to select the specific spray pattern needed for your application. "Color Coded" quick disconnect nozzle 5 pack includes one each: 0° (red), 15° (yellow), 25° (green), and 40° (white) stainless steel high pressure spray tips plus one brass 65° (black) low pressure chemical/soap tip.

**Installation:** Simply pull back on socket collar to insert or release tip, collar moves back into position when connection/disconnect is complete. Tips require 1/4" QD socket on wand to complete connection.

**Warning:** Be sure QD's are in their original locking position to prevent the accidental ejection of parts/accessories. Serious injury can result from the high pressure discharge produced by pressure washers.

### LOW PRESSURE QD CHEMICAL/SOAP TIP

Apache P/N	Description	Degree	Wt.Ea
99023499	Black	65°	.05#

**Applications:** Low pressure 65° (black) tip for application of chemical/soap.

**Installation:** Simply pull back on socket collar to insert or release tip, collar moves back into position when connection/disconnect is complete. Tips require 1/4" QD socket on wand to complete connection.



### NOZZLE CONVERSION KIT

Apache P/N	Description	Wt.Ea
99023509	4.0 Orifice	1.25#

**Applications:** Replacement/conversion kit fits all 1/4" MNPT wands. These tips improve the cleaning efficiency of your pressure washer.

**Kit Includes:** One each of the following "Color Coded" 1/4" quick disconnect nozzles; 0° (red), 15° (yellow), 25° (green), and 40° (white) stainless steel spray tips, one brass 65° (black) low pressure chemical/soap tip, 1/4" QD female socket and male plug, and a turbo nozzle.

**Installation:** Turn off pressure washer, pull trigger on gun to relieve pressure in hose and remove nozzle currently on wand. Thread 1/4" FNPT QD Socket onto wand and tighten with wrench. Install 1/4" MNPT QD plug into Turbo Nozzle and tighten with wrench. To operate, simply pull back on socket collar to insert or release tip, collar moves back into position when connection/disconnect is complete.

**Safety Tip:** Turn off pressure washer and release hose pressure when changing spray tips and nozzles, make sure tip/nozzle is firmly attached before starting machine.

**Note:** Use Teflon pipe tape on MNPT threads to ensure a leak-free connection.

**Warning:** Be sure QD's are in their original locking position to prevent the accidental ejection of parts/accessories. Serious injury can result from the high pressure discharge produced by pressure washers.





## FLOW THRU QUICK DISCONNECT SOCKETS & PLUGS



### BRASS FEMALE SOCKET

Apache P/N	Description	Wt.Ea
44048690	1/4" FNPT	.21#
44048694	3/8" FNPT	.25#

**1/4" FNPT Applications:** Converts 1/4" male pipe thread to QD socket for quick/easy change out of QD nozzle tips. Other accessories can be adapted with 1/4" MNPT QD plug.

**Installation:** Thread socket directly onto wand. Allows for quick/easy change out of various tips, nozzles, brushes, and accessories. Accessories require 1/4" MNPT plug (#44048682).

**3/8" FNPT Applications:** Converts 3/8" male pipe thread to QD socket for quick/easy connection of hose and accessories to pressure washer. Requires 3/8" QD plug to complete connection.

**Installation:** Thread socket directly onto hose or accessory. Allows for quick/easy change out of various parts and accessories.

**Note:** Use Teflon pipe tape on MNPT threads to ensure a leak-free connection.

### FEMALE PLUG PLATED STEEL

Apache P/N	Description	Wt.Ea
44048680	1/4" FNPT	.10#
44048684	3/8" FNPT	.10#

**Applications:** Converts male pipe thread to QD plug for quick/easy connection of hose and accessories. Requires QD socket to complete connection.

**Installation:** Thread plug directly onto hose or accessory. Allows for quick/easy change out of parts and accessories.

### MALE PLUG PLATED STEEL

Apache P/N	Description	Wt.Ea
44048682	1/4" MNPT	.10#
44048686	3/8" MNPT	.10#

**Applications:** Converts female pipe thread to QD plug for quick/easy connection of guns, hoses, machinery, and accessories. Requires QD socket to complete connection.

**Installation:** Thread plug directly into FNPT connection on guns hoses, nozzles, brushes, accessories etc., then attach to the quick disconnect socket.

**Metric style thread-on QD sockets and plugs are also available.**

**WARNING:** Be sure QD's are in their original locking position to prevent the accidental ejection of parts / accessories. Serious injury can result from the high pressure discharge produced by pressure washers.



## PRESSURE WASHER ACCESSORIES



### PRESSURE GAUGE w/QUICK DISCONNECT

Apache P/N	1 1/2" Face	Wt.Ea
44048769	0-5000# PSI Gauge w/Quick Coupler	2.0#

**Applications:** For pressure washer pumps that do not come with a pressure gauge or gauge port on the pump.

**Installation:** Coupler allows quick/easy insertion of gauge between discharge port of pump and pressure washer hose. Pull back on socket collar to attach or remove gauge.

**Note:** QD accepts 1/8" MNPT threaded gauges. Other adapters may be required to connect hose, coupler, and pump, depending on your configuration. Use Teflon pipe tape on MNPT threads to ensure a leak-free connection.

### METAL HOSE REEL

Apache P/N	Description	Wt.Ea
99023586	50' (3/8") 3500 PSI Hose Reel w/out Hose	9.5#
99023587	100' (3/8") 3500 PSI Hose Reel w/out Hose	12.0#

**Applications:** Convenient way to store hose on pressure washer. Reel fits most carts and includes mounting bracket. Rated up to 3500# PSI.

**Construction:** Solid steel construction with durable powder coat paint and full flow brass swivel outlet.

**Installation:** Easy to assemble, versatile mounting brackets bolt to cart handle. Includes: 5' - Female M22 x 3/8" MPT pump to reel connector hose.

**Inlet/Outlet:** 3/8" FNPT



### 20" SURFACE CLEANER - MAX G.P.M. 8.0

Apache P/N	Inlet	W.P.	Wt.Ea
99032015-C	3/8" Female Pipe Thread	4000	24#

**Features:** Heavy-duty ABS body with anodized aluminum metal surfaces, and built-in gun right on the surface cleaner.

**Applications:** The rotary action cleans large areas such as garage floors, driveways, walks, and other hard surfaces with proper drainage.





**PRESSURE WASHER CHEMICALS (CONCENTRATE)****CHEMICALS**

Apache P/N	Description	Wt.Ea
99002100	Degreaser Wash	8.68#
99002102	Deck and Siding Cleaner	8.68#
99002104	Vehicle and Boat Wash/Wax	8.68#

CONTACT CUSTOMER SERVICE FOR SPECIFICATION AND PRICING INFORMATION ON THESE AND OTHER PRESSURE WASHER CHEMICALS.

**MUNICIPAL SEWER CLEANING HOSE****ASSEMBLIES**

Apache P/N	I.D. x O.D.	Color	Burst Min.	M.B.R.Max.	W.P.	Wt.100'
10085660	5/8" x 31/32"	Orange	6250	4.0	2500#	18.0#
10085662	3/4" x 1-3/16"	Orange	6250	5.0	2500#	29.0#
10085664	1" x 1-15/16"	Orange	6250	6.0	2500#	39.2#
10085666	3/4" x 1-3/16"	Blue	7500	5.0	3000#	29.0#
10085668	1" x 1-15/32"	Blue	7500	8.0	3000#	41.0#
10085670	1/2" x 7/8"	Black	12000	3.0	4000#	19.0#

**Applications:** Use to clean clogged or poorly draining sewer and water lines. Hose is constructed from materials specially selected to provide rugged and reliable service under even the most severe and demanding conditions found in high pressure sewer cleaning.

**Construction:** All compounds are bonded together to maximize fitting retention, wear resistance, and provide smaller minimum bend radii.

**Coupled:** Male NPT and pressure tested at the factory.

**Tube:** Polyolefin for maximum hydrolysis resistance.

**Reinforcement:** High Tensile polyester fibre for an exceptionally low volumetric expansion rate, eliminating loss of strength from moisture absorption.

**Cover:** Polyether-urethane, provides exceptional cut, abrasion and fungus resistance.

**Temp Range:** P-40°F to 122°F

**Available In:** 400', 500', and 600' lengths.

**CRUSH PROOF PLASTIC VACUUM CLEANING HOSE (GRAY)****BULK HOSE (NON-REINFORCED)**

Apache P/N	I.D. x Length
12041500	1-1/4" x 50'
12042000	1-1/2" x 50'
12042507	2" x 50'

**MOLDED GRAY CUFFS (SCREW-ON)**

Apache P/N	I.D.
12043503	1-1/4"
12044003	1-1/2"
12045506	2"

**Application:** Use for commercial or industrial vacuum cleaning, swimming pool vacuum cleaning, car wash cleaning installations, and insulation blowing.

**Construction:** Flexible EVA hose; interlocked, non-wire self-supporting construction for crush resistance and durability.

**Temp. Range:** -65°F to 140°F.

**Std. Lengths:** 1-1/4" and 1-1/2" = 50', 2" = 25'.

## LPG HOSE



## STANDARD – ASSEMBLIES

Apache P/N	I.D. x Length	Wt.Ea.
98108582	1/2" x 10'	3.0#
98108583	1/2" x 25'	7.5#
98108584	1/2" x 50'	15.0#
98108585	1/2" x 100'	30.0#
11037020	1" x 100'	60.0#
11037025	1" x 125'	75.0#
11037030	1" x 150'	87.0#

## STANDARD – BULK HOSE

Apache P/N	I.D. x O.D.	Spirals	MBR	W.P.	Wt.100'
10080500	1/4" x 37/64"	2	N/A	350#	13.0#
10081009	3/8" x 3/4"	4	N/A	350#	21.0#
10081505	1/2" x 15/16"	4	N/A	350#	30.0#
10082005	3/4" x 1-1/4"	4	N/A	350#	43.0#
10082501	1" x 1-1/2"	4	N/A	350#	58.0#
11036007	1-1/4" x 1-13/16"	4	8"	350#	92.0#
11036503	1-1/2" x 2-1/8"	4	9"	350#	103.0#
11037003	2" x 2-3/4"	4	12"	350#	167.0#

## POLAR-FLEX / LOW TEMP – ASSEMBLIES

Apache P/N	I.D. x Length	Wt.Ea.
11037031	1" x 100'	60.0#
11037033	1" x 125'	75.0#
11037035	1" x 150'	87.0#

## POLAR-FLEX / LOW TEMP – BULK HOSE

Apache P/N	I.D. x O.D.	Spirals	W.P.	Wt.100'
10082450	1" x 1-1/2"	4	350#	58.0#

**Applications:** A flexible, heavy duty, high pressure hose for handling LPG gas. 1/4" and 3/8" used on portable heaters, weed burners, etc. Intermediate sizes used in home delivery service, filling tanks, bottles, and cylinders. Sizes 1-1/2" and larger used for unloading and transporting LPG between tank trucks, storage tanks and delivery trucks. Meets requirements of N.F.P.A. Code 58 and is listed by Underwriters' Laboratories, Inc.

**Construction:** Smooth, permeation resistant nitrile tube. Braid is synthetic cord reinforcement with neoprene cover.

**Assemblies:** 1/2" hoses are coupled with M x MNPT plated steel fittings and the 1" hoses are coupled with male x male brass "Pro-Sur" fittings.

**Min. Burst:** 1,750 lbs. Continuous indented brand on all hose.

**Std. Length:** As required.

**Note:** Polar-Flex remains flexible in sub-zero temperatures (-50° to 180°). "Pro-Sur" fittings are non-sparking, brass, one-piece fittings that are designed to virtually eliminate any possibility of gas leaking behind the hex nut.

**WARNING:** LP gas has volatile characteristics that require special hose construction. The rubber compounds must be designed to handle LP gas, and the cover must be pin-pricked to prevent gas buildup among the various layers of the hose. Using the wrong hose may lead to early/sudden failure. Do not use reusable couplings with this product.

## TWIN LINE WELDING HOSE



### ASSEMBLIES

Apache P/N	I.D. x Length	Wt.Ea.
10066840	3/16" x 12.5'	2.0#
10066850	3/16" x 25'	4.0#
10066855	3/16" x 50'	7.0#
10066865	1/4" x 12.5'	3.0#
10066875	1/4" x 25'	6.0#
10066880	1/4" x 50'	11.0#

**Applications:** For oxy-acetylene service in steel, metal working, industrial, construction, and agricultural industries.

**Construction:** Tube especially compounded for oxy-acetylene service. Vertically braided rayon cord reinforcement. Smooth cover, red and green line bonded securely together for easy handling. Bands are recommended to prevent separation at the ends. Meets RMA-IAA Spec. Grade R.

**Other Lengths Available Upon Request.**

## AIRLESS PAINT SPRAY HOSE



### ASSEMBLIES

Apache P/N	I.D. x Length	Wt.Ea.
10076096	1/4" x 25'	2.2#
10076097	1/4" x 50'	3.8#

**Applications:** Light weight, flexible, high pressure, and static conductive hose for airless paint spraying.

**Construction:** Tube is a chemical and solvent resistant nylon. Cover is abrasion resistant polyurethane

**Assemblies:** Dissipates static charge and is coupled female IPT with spring guards on each end.

**Other Lengths Available Upon Request.**

## FUEL TRANSFER HOSE – W / STATIC WIRE



### ASSEMBLIES

Apache P/N	I.D. x Length	Wt.Ea.
98108450	3/4" x 10'	3.1#
98108455	3/4" x 12'	3.7#
98108460	3/4" x 14'	4.2#
98108465	3/4" x 15'	4.5#
98108475	1" x 10'	5.6#
98108480	1" x 12'	6.6#
98108485	1" x 14'	7.6#
98108495	1" x 20'	10.6#

**Applications:** Required for use with 12 or 110 volt "Electric" pumps. Recommended for dispensing all gasoline, diesel fuel, kerosene, and oil. Where UL approval is not required.

**Construction:** Oil resistant tube and cover. Spiral reinforced with synthetic yarn. Includes static wire built into the hose wall.

**Assemblies:** Coupled male x male with a built in "static wire" to dissipate static electricity associated with electric pumps, plus 8" internal "spring guards" on each end to prevent the hose from kinking off at the coupling, extending the life of the hose three to four times.

**WARNING: Not for Commercial Pump Use.**

## MANUAL (GRAVITY FLOW) FUEL NOZZLES



### MANUAL NOZZLE

Apache P/N	Description
99000230	13/16" Spout, 3/4" Inlet
99000231	13/16" Spout, 3/4" Inlet

**Application:** Designed for fueling off-road and farm equipment from a gravity flow tank. For use with gasoline, kerosene, diesel, and most petroleum based products.

**Construction:** Female NPT inlet includes a female reducer adapter. Light weight aluminum body, full flow nozzle shuts-off with minimal line shock.

## CURB PUMP HOSE



## SOFT WALL CPLD MxM - ASSEMBLIES

Apache P/N	I.D. x Length	W.P.	Wt.Ea.
98108610	3/4" x 10'	200#	4.0#
98108620	3/4" x 12'	200#	4.6#
98108635	3/4" x 15'	200#	5.6#
98108638	3/4" x 16'	200#	6.0#
98108643	3/4" x 18'	200#	6.5#
98108646	1" x 10'	150#	7.2#
98108648	1" x 12'	150#	7.5#
98108650	1" x 15'	150#	10.3#
98108652	1" x 16'	150#	10.9#
98108656	1" x 18'	150#	12.2#

**Application:** Designed for curb pump self serve stations and highly sensitive electronic fuel pumps.

**Construction:** Tube is NBR reinforced with a spiral polyester cord. Cover is oil and weather resistant.

**Assemblies:** Coupled with male MPT internally expanded fittings that are capped to protect the threads. All assemblies are tested for static conductivity.

## HARD WALL CPLD MxM - ASSEMBLIES

Apache P/N	I.D. x Length	W.P.	Wt.Ea.
98108675	3/4" x 10'	250#	5.2#
98108685	3/4" x 12'	250#	6.0#
98108695	3/4" x 15'	250#	7.4#
98108703	3/4" x 16'	250#	7.8#
98108710	3/4" x 18'	250#	8.7#
98108711	1" x 10'	150#	7.9#
98108712	1" x 12'	150#	9.3#
98108713	1" x 15'	150#	11.4#
98108715	1" x 16'	150#	12.1#
98108718	1" x 18'	150#	13.4#

**Application:** Designed for curb pump self serve stations and highly sensitive electronic fuel pumps.

**Construction:** Tube is NBR reinforced with one-wire braid. Cover is oil and weather resistant.

**Assemblies:** Coupled with male MPT internally expanded fittings that are capped to protect the threads. All assemblies are tested for static conductivity.

## TAR AND ASPHALT PATCHING HOSE (BLACK)



### BULK HOSE

Apache P/N	I.D. x O.D.	W.P.	Wt.Ft.
12049990	1" x 1.53"	250#	.89#

**Application:** For use in applying hot asphalt with pressures up to 250 P.S.I. at 350°F constant, and up to 400°F intermittent.

**Construction:** Tube is made of high temperature polymers that are resistant to swelling and embrittlement in hot asphalt service. Reinforcement has 2 braids of high tensile steel wire. Cover is heat, oil, abrasion, and weather resistant black neoprene. Hose is lightweight for easy handling.

**Temp. Range:** -40°F to 350°F.

#### Fitting Options:

1" MNPT Plated Steel KC Nipple with Two Bands

1" MNPT Crimp on Hydraulic Coupling

1" MNPT Plated Steel Tri-Lok Hose Nipples with Two Bands

**Max. Length:** 50'

## HOT TAR AND ASPHALT HOSE – RUBBER



### BULK HOSE – LOW TEMP

Apache P/N	I.D. x O.D.	MBR	W.P.	Wt.Ft.
12050003	2" x 2-5/8"	8"	150#	1.7#
12051506	3" x 3-1/2"	14"	150#	2.8#
12049998	4" x 4-3/4"	18"	150#	3.8#

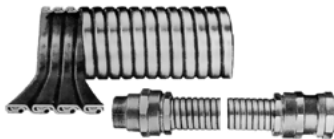
**Application:** Transfer of hot asphaltic materials between trucks, rail transport cars, storage tanks, and disposing units. Also suitable for other high temperature petroleum based products.

**Construction:** Specially compounded neoprene tube reinforced with synthetic cord and a spiral helix wire inserted. Neoprene cover.

**Temp. Range:** Up to 350°F.

**Fittings:** Quick-acting, reattachable or permanent.

## HOT TAR AND ASPHALT HOSE – METAL



A rugged heavy duty interlocking asbestos packed hose. Made from galvanized steel for temperatures over 250°F. Male and female malleable iron fittings are available and attached at the factory. All hoses are hydrostatically tested to insure against leaks. This hose is lightweight and offers maximum flexibility.

**Price and Availability Upon Request.**

## BRAIDED METAL HOSE



### 1 BRAID – ASSEMBLIES

I.D.	Overall Length	Wt. Ea. Additional Inch	Wt. Ea. Min. Length Assembly
3/8"	10" Min. Length/Clpld.	.02#	.75#
1/2"	10" Min. Length/Clpld.	.02#	.85#
3/4"	10" Min. Length/Clpld.	.03#	1.00#
1"	10" Min. Length/Clpld.	.04#	1.25#
1-1/4"	11" Min. Length/Clpld.	.05#	1.50#
1-1/2"	12" Min. Length/Clpld.	.07#	2.25#
2"	14" Min. Length/Clpld.	.09#	3.15#
2-1/2"	14" Min. Length/Clpld.	.14#	3.90#
3"	14" Min. Length/Clpld.	.17#	5.25#

**Applications:** Use when rigid connections, temperature extremes, corrosive media, or permeation precludes the use of rubber, PTFE, or plastic hose. Typical industrial applications include; hot oil, hot air transfer, flexible connection on compressors, construction, and manufacturing, petroleum refining, and food processing.

**Construction:** Annular corrugated stainless steel hose with a single or double 304 stainless steel braided cover.

**Assemblies:** Overall lengths are coupled with M x M (schedule 40) carbon steel weld-on couplings. 1 braid assemblies can be made in as little as 1" increments, although the minimum length is 10".

**Temp. Range:** Constant up to 1100°F., intermittent from 1100°F to 1500°F.

## Additional Products In Stock

- Ventilation Ducting
- Sand Blast Hose & Fittings
- Twin-Line Welding Hose
- LP Gas Hose
- Hydraulic Hose, Fittings, Adapters, & Quick Couplers
- Material Handling Hose
- Clamps & Tools
- Fire/Washdown Hose & Nozzles







## **Terms**

1/2% - 10 Days; Net 30 Days

## **Product Ordering Info**

When ordering please specify the Apache part number, quantity, description, and cost, this will insure the correct items will be shipped to you promptly.

## **Freight**

Unless otherwise indicated, all shipments of \$3,500 or more (one order to one destination) will be prepaid within the continental U.S.A., except Alaska or Hawaii. (EXCEPTION: DUROWALL - F.O.B. CEDAR RAPIDS, IA)

## **Warranty**

All merchandise manufactured, or assembled by Apache is warranted at the time of shipment to be free from defects in material, and manufacturing (provided such merchandise is properly installed and used only for the intended purpose and under normal service conditions). Liability with respect to any such merchandise proven defective, is limited to buyer's net purchase price or (at Apache's discretion) to the repair or replacement thereof upon its return to Apache, freight prepaid. In no event shall Apache be liable to supply or pay for labor, downtime, or any loss or damage, either direct, incidental or consequential. All merchandise supplied by Apache but designed, manufactured and assembled by others shall be accepted by Buyer with only those warranties made by such vendors or manufactures and in lieu of any additional warranties on the part of Apache. This warranty is expressly made in lieu of any and all other warranties, including the warranty of merchantability and fitness for a particular purpose.

## **Return Materials**

Any customer seeking to return material(s), for any reason, must first secure permission from an authorized customer service representative. A Return Material(s) Authorization number (RMA) will be issued. This number must appear on the material, packing list, and bill of lading so the Receiving Clerk can verify authorization for return. Absence of an RMA number shall constitute the right to refuse shipment.

**Due to continual product improvement, Apache reserves the right to alter specs and prices without prior notice.**



Our expert customer service personnel are available toll free to help recommend belt, belt fabrications, hose, and hose assemblies for your particular requirements. Whether it be belting or hose, we represent a wide variety of vendors who specialize in manufacturing quality goods.

**Call us and let us work for you.**



**[www.apache-inc.com](http://www.apache-inc.com)**

#### **CORPORATE HEADQUARTERS**

**CEDAR RAPIDS, IA**

Phone: 319-365-0471  
Toll Free: 866-757-7816  
Fax: 319-365-2522

**INDUSTRIAL SALES GROUP**

Phone: 319-365-0471  
Toll Free: 800-553-5455  
Fax: 319-365-2522

#### **ISO 9001:2008 CERTIFIED**

**CONSUMER PRODUCTS DIVISION**

Phone: 319-365-0471  
Toll Free: 800-459-8423  
Fax: 319-365-6714

*100% EMPLOYEE OWNED*



**PROUD MEMBER OF:**



**99002328 / AP5 / rev071713**

