

For new or existing construction. Metallic, recessed combo boxes for power and/or low voltage for class 2 wiring of satellite or cable TV, speakers, etc.

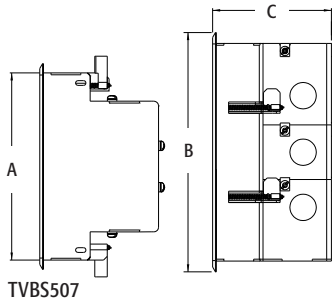
### FEATURES AND BENEFITS

- Steel box with non-metallic paintable white or black trim plate
- Easy to install, secure installation
- Mounting wings on two- and three-gang styles hold boxes securely against the wall in retrofit projects
- Boxes screw-mount to stud in new construction
- Optional covers for unused boxes

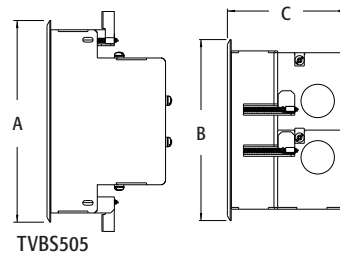
CATALOG NUMBER	UPC/DCI/NAED MFG #018997	DESCRIPTION	UNIT PKG	STD PKG	DIM A	DIM B	DIM C
TVBS505*	37955	2-Gang steel box w/ white non-metallic trim plate	1	4	6.698	6.012	3.937
TVBS505BL	20740	2-Gang steel box w/ black non-metallic trim plate	1	4	6.698	6.012	3.937
TVBS507*	37956	3-Gang steel box w/ white non-metallic trim plate	1	4	6.205	7.930	3.937
TVBS613	09633	4-Gang steel box with white non-metallic trim plate	1	1	7.000	17.000	3.848
TVBS613BL	09660	4-Gang steel box with black non-metallic trim plate	1	1	7.000	17.000	3.848
TVB613C	09631	4-Gang white cover	5	5	7.000	17.000	.127



\*Optional box covers available on page Q-3.  
**PATENTED.**



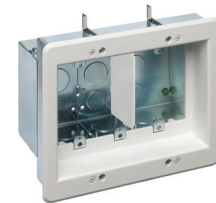
TVBS507



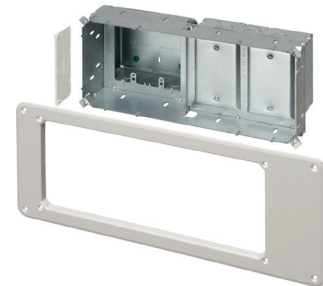
TVBS505



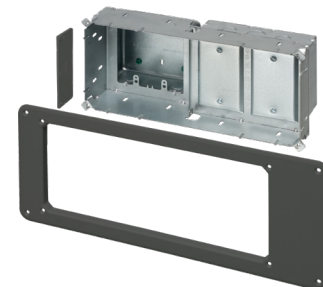
TVBS505



TVBS507



TVBS613



TVBS613BL

Scan For Video



### INSTALLATION INSTRUCTIONS



New Work

Attach box to stud using #6 screws. Pull wires.



After drywall is installed, add trim plate, then install enclosure assembly to wall with outer screws.



Retrofit

Cut a hole using enclosure without trim plate, as template. Mounting wings hold box in wall.



Finished install shot.