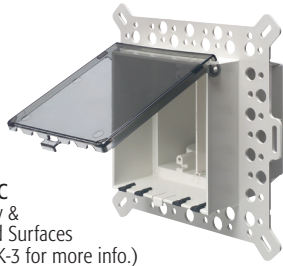


## Two-Gang, Low Profile IN BOX™



**DBVM2C**  
Masonry &  
Textured Surfaces  
(See p. K-3 for more info.)



**DBVR2W**  
Flat Surfaces  
(See p. K-7 for more info.)



**DBVS2C**  
Vinyl Siding  
(See p. K-2 for more info.)

Two-gang, recessed electrical box with weatherproof-in-use extra-duty cover for flat surfaces, masonry, retrofit, and siding construction (see below for product use). Non-metallic cover and base. Installs two outlets or combo devices. Box and white cover are textured/ paintable. UV rated plastic for long outdoor life.

### FEATURES AND BENEFITS

- IN BOX's one-piece assembly replaces the installation of an electrical box and bubble cover assembly
- Installs in the wall, so less of it shows outside
- No gaskets required
- For flat surfaces, vinyl siding, stucco over masonry or wood (with or without lath), and retrofit
- Install an outlet and a switch, or two switches in one location
- Includes 1/2" and 3/4" NM cable connectors and a two-gang rectangular device plate

| CATALOG NUMBER | UPC/DCI/NAED MFG #018997 | DESCRIPTION/COVER COLOR | UNIT | STD PKG | DIM A | DIM B | DIM C | DIM D | DIM E |
|----------------|--------------------------|-------------------------|------|---------|-------|-------|-------|-------|-------|
| DBVM2C         | 03962                    | 2-Gang, Vertical/Clear  | 1    | 4       | 9.058 | 8.992 | 5.142 | 1.919 | 3.223 |
| DBVM2W         | 03963                    | 2-Gang, Vertical/White  | 1    | 4       | 9.058 | 8.992 | 5.142 | 1.919 | 3.223 |
| DBVR2C         | 03964                    | 2-Gang, Vertical/Clear  | 1    | 4       | 7.159 | 6.888 | 5.142 | 1.295 | 3.847 |
| DBVR2W         | 03965                    | 2-Gang, Vertical/White  | 1    | 4       | 7.159 | 6.888 | 5.142 | 1.295 | 3.847 |
| DBVS2C         | 03960                    | 2-Gang, Vertical/Clear  | 1    | 4       | 9.058 | 8.992 | 5.142 | 2.263 | 2.879 |
| DBVS2W         | 03961                    | 2-Gang, Vertical/White  | 1    | 4       | 9.058 | 8.992 | 5.142 | 2.263 | 2.879 |

Add suffix "GC" to Catalog # when ordering in Canada, for example DBVM2CGC.

2-Gang, replacement covers available on page K-17.

**PATENTED. ADDITIONAL PATENTS PENDING.**

Note: Meets 2015 CEC (Rule 26-702), NEMA 3R, NEC 406.9 (b); Where a weatherproof-in-use cover is required for 15 or 20 AMP receptacles installed outdoors.

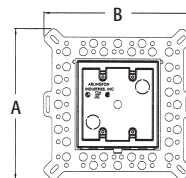


**WEATHERPROOF-IN-USE**  
**EXTRA-DUTY**

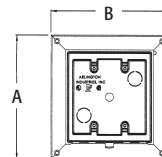
### Two-Gang In Box includes...

Box with weatherproof-in-use extra-duty cover; installed bug plugs; (1) decorator wall plate; and (2) NM cable connectors. DBVM2 also includes a block bushing with washer; and an in-place, disposable mud cover. DBVR2 also includes (1) set installation screws; and (1) roll of caulk. DBVS2 also includes (1) set installation screws.

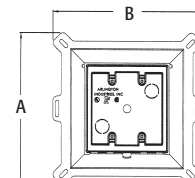
Scan For Video



**DBVM2**  
34.0 cu. in.



**DBVR2**  
34.0 cu. in.



**DBVS2**  
34.0 cu. in.



Bug Plugs ship installed in all IN BOX styles to seal unused cord hole openings.



Completed installation, DBVS2C shown.