

## Flush-to-Floor Round Cut-In Floor Box Kits with Threaded Plugs

3.5" round, UL Listed non-metallic floor box for existing wood or concrete floor.\*

### FEATURES AND BENEFITS

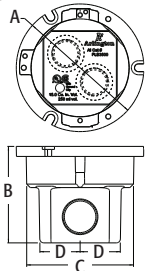
- Easy to install in existing wood or concrete\* floor
- Hide mis-cut flooring, cover edges of cut carpet, and get a neater finish with an oversized ring or carpet rings

CATALOG NUMBER	UPC/DCI/NAED MFG #018997	DESCRIPTION	UNIT PKG	STD PKG	DIM A	DIM B	DIM C	DIM D
FLB3500	00733	Non-metallic round cut-in box for existing wood or concrete floor	4	4	3.968	3.000	3.318	1.250
<b>FLOOR BOX KITS W/ METAL COVERS</b>								
FLB3520MB	00734	Round cut-in box, Brass cover w/ threaded plugs	1	1	3.995	3.000	2.500	.169
FLB3520NL	00735	Round cut-in box, Nickel-plated brass cover w/ threaded plugs	1	1	3.995	3.000	2.500	.169
<b>CARPET RINGS</b>								
FLB3550MB	00738	Brass	1	1	5.137	3.110	4.291	.374
FLB3550NL	00739	Nickel-plated brass	1	1	5.137	3.110	4.291	.374
<b>OVERSIZED TRIM RINGS</b>								
FLB3570MB	00740	Brass	1	1	7.141	3.109	4.143	.450
FLB3570NL	00741	Nickel-plated brass	1	1	7.141	3.109	4.143	.450
<b>TRIM KITS WITH METAL COVERS</b>								
FLB3520MBTK	00736	4" Round, Brass	1	1	3.995	3.000	2.500	.169
FLB3520NLTK	00737	4" Round, Nickel-plated brass	1	1	3.995	3.000	2.500	.169

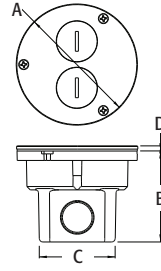


\*Electrical conduit must be accessible from underneath floor if installing in concrete.  
**PATENTS PENDING.**

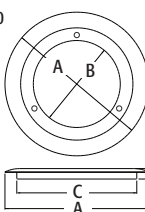
FLB3500



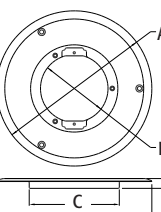
FLB3520



FLB3550

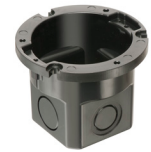


FLB3570

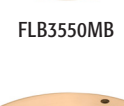


### FLB3520MB & FLB3520NL FLOOR BOX KITS INCLUDE...

UL listed non-metallic floor box, round metal cover in brass or nickel-plated brass, non-metallic gasket support plate, gasket, UL listed 15 amp TR duplex receptacle, NM942 cable connector, (3) #8 x 1/2" flat head screws, and (1) #6 x 1/2" screw



FLB3500



FLB3520MB

FLB3520NL

FLB3550MB

FLB3550NL

FLB3570MB

FLB3520MBTK

FLB3520NLTK

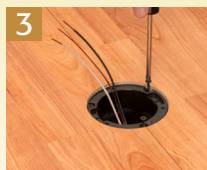
### INSTALLATION INSTRUCTIONS



Using a 4" diameter hole saw, cut opening in floor approximately 1/2" deep, taking care to avoid structural framing members.



Next, use a 3-1/2" hole saw to cut through the remaining flooring/subfloor, creating a shelf at the desired depth of the box. Remove material that remains between the saw cuts.



Pull cable. Install in box with supplied cable connector. Attach box to floor with (3) #6 x 1-1/4" wood screws (not supplied) through the U-shaped cut outs in the box flange.



Wire receptacle. Install box.



Attach plastic gasket support plate to receptacle with #6 x 1/2" screw. Install gasket.



Attach cover to box with (3) #8 x 1/2" flat head machine screws.