

Steel Fan & Fixture Pan Box with Adjustable Mounting Bracket for Wood I-Joists in Existing Construction

Heavy-duty, plated steel fan/fixture box with fully adjustable mounting bracket. For retrofit installations on wood I-beams or rafters set 16 to 24 inches on-center for FBR407R; 12 to 16 inches on-center for FBR40712R.

FEATURES AND BENEFITS

- No parts to lose—installation and adjustment screws ship parked in place
- Installs quickly and securely on wood I-beams
- Position the box anywhere along the bracket to center the fan/fixture in the room
- Fan/fixture installation screws are parked...ready for easy fan/fixture bracket installation!
- UL rated: 35 lb fan, 50 lb fixture; CSA rated: 50 lb fan/fixture

CATALOG NUMBER	UPC/DCI/NAED MFG #018997	DESCRIPTION / CU. IN.	UNIT	STD PKG	DIM A	DIM B	DIM C
FBR407R	72248	Adjustable steel bracket, 16 - 24" o.c., For 1/2" or 5/8" drywall ceiling/8.0 cu. in.	1	10	3.620	2.098	13.25
FBR40712R	72247	Adjustable steel bracket, 12 - 16" o.c., For 1/2" or 5/8" drywall ceiling/8.0 cu. in.	1	10	3.620	2.098	9.25



Note: Install fan or fixture (not included) in accordance with manufacturer's instructions and all local applicable electrical codes, using the parked screws provided. Refer to chart on page R-23 for load ratings and number of single conductors.

PATENTED.



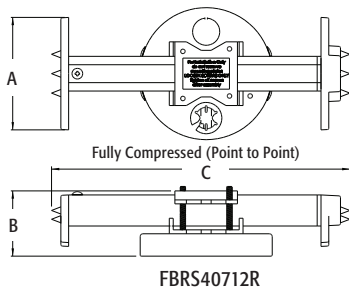
FBR407R



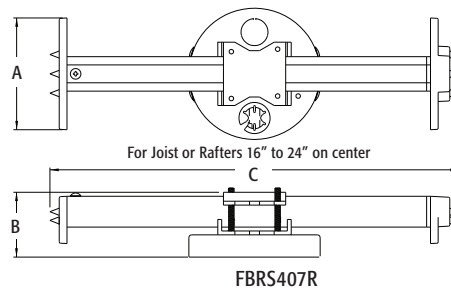
FBR40712R

FBR407R INCLUDES...

Box/bracket, screws to adjust box position, installed NM cable connector, multiple KOs, and two screws for fan/fixture bracket installation (screwed in place until removed by installer).

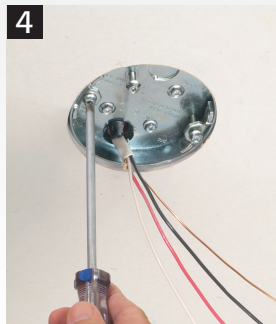
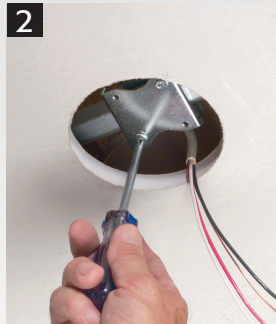
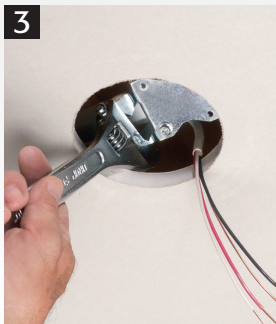
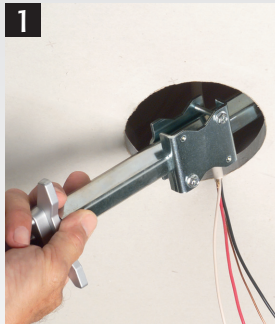


FBR40712R

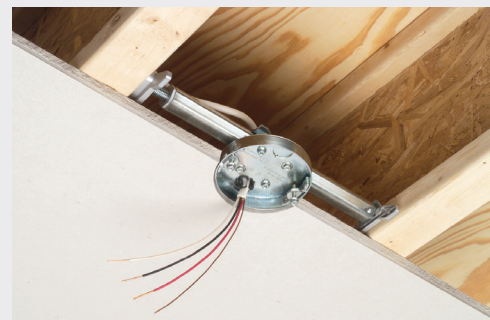


FBR407R

INSTALLATION INSTRUCTIONS



1. Cut a 4-3/8" diameter hole in ceiling. Remove pan box from sled and fit mounting bracket into hole, positioning between wood I-joists with feet resting on ceiling.
2. Loosen sled screws and slide over to access hex bar. (Note: no need to remove sled.)
3. Tighten hex bar with a wrench to embed points and secure between I-joists.
4. Tighten sled to hex in center of hole. Pull cable through NM cable connector and remount box. Attach fan/fixture bracket with supplied screws.



Cut away showing FBR407R installed between wood I-beams