

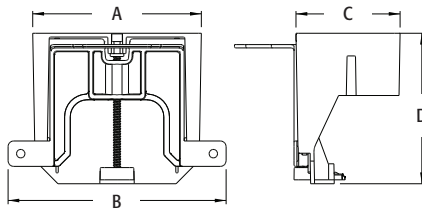
Adjustable IN/OUT BOX™

Non-metallic adjustable mounting brackets for class 2 low voltage installations.

FEATURES AND BENEFITS

- Easy to install, great looking installation
- Set for a 1/2" thick wall finish, and adjusts up to 1-1/2" for when wall thickness is unknown
- Support tabs deliver extra-secure mounting of bracket to wood or steel studs in new construction
- Depth adjustment screw is always accessible for adjustments to final wall finish thickness...before or after the wall is done

CATALOG NUMBER	UPC/DCI/NAED MFG #018997	DESCRIPTION	UNIT PKG	STD PKG	DIM A	DIM B	DIM C	DIM D
LVA1	09750	Single-gang, Adjustable depth	25	25	3.720	4.811	2.299	3.320
LVA2	09751	2-Gang, Adjustable depth	10	10	3.720	4.811	4.111	3.320



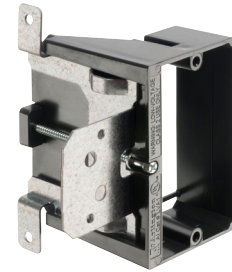
PATENTED.



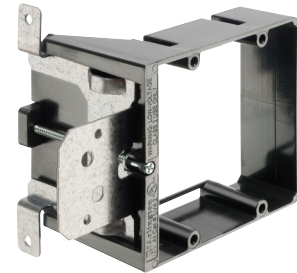
LVA1
on metal stud



LVA2
on wood stud



LVA1



LVA2