

Fig. 52

Concrete Rod Attachment Plate

**Size Range:** 3⁄8" through 1 1⁄4"

**Material:** Carbon steel

**Finish:** ☐ Plain or ☐ Hot-Dip Galvanized

**Service:** Structural attachment to concrete ceiling where vertical adjustment is desired. Normally used with threaded rod and nut and anchors of sufficient strength to hold the desired load.

**Ordering:** Specify rod size, figure number, name and finish.

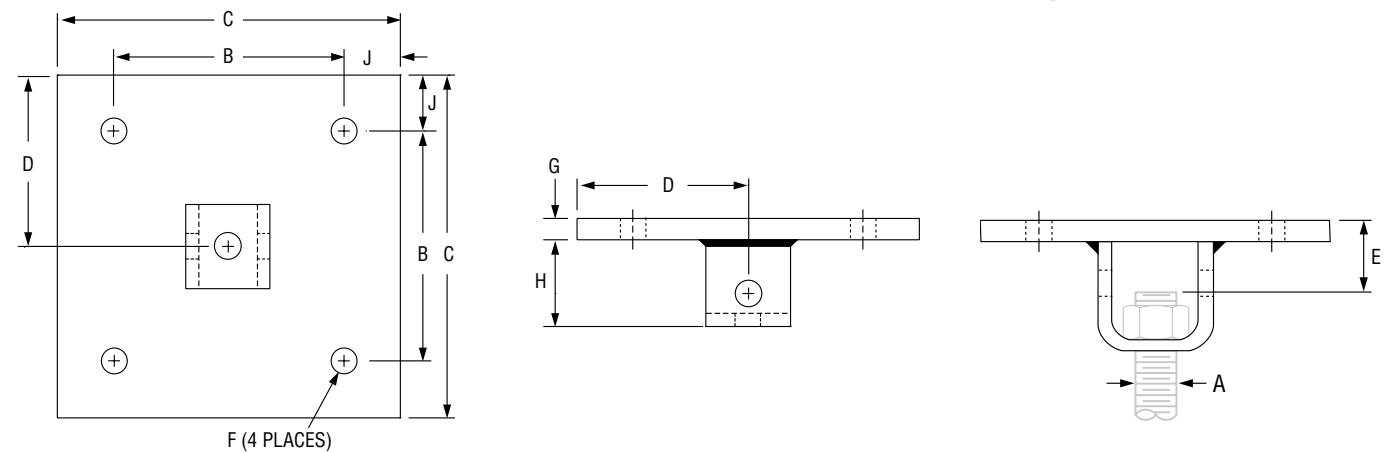


FIG. 52: DIMENSIONS (IN) • LOAD (LBS) • WEIGHT (LBS)										
Rod Size A	Max Load ■	Weight	J	B	C	D	E	F	H	G
3⁄8	730	11.6	1	8	10	5	2 1⁄4	9⁄16	2 7⁄8	3⁄8
1⁄2	1,350	11.6					2 1⁄8			
5⁄8	2,160	15.1					2 1⁄4			
3⁄4	3,230	16.1					3 3⁄8	1 1⁄16	3 1⁄8	1⁄2
7⁄8	4,480	16.7					3 3⁄8		4 1⁄4	
1	5,900	34.9	2		12	6	3 1⁄2	13⁄16	4 1⁄2	3⁄4
1 1⁄4	9,500	40.9					3 5⁄8	15⁄16	5	

■ Based on the rod diameter only. Rating is subject to the conditions that the concrete and anchors used are of sufficient strength to hold the load.

PROJECT INFORMATION		APPROVAL STAMP			
Project:		<input type="checkbox"/> Approved			
Address:		<input type="checkbox"/> Approved as noted			
Contractor:		<input type="checkbox"/> Not approved			
Engineer:		Remarks:			
Submittal Date:					
Notes 1:					
Notes 2:					