

Fig. 49

Concrete Clevis Plate

Size Range: 3/8" through 1 3/4"

Material: Carbon steel

Finish: ☐ Plain or ☐ Hot-Dip Galvanized with Zinc Plated Fasteners

Service: Structural attachment to concrete ceiling where flexibility is desired. Concrete clevis plate is normally used in conjunction with Fig. 290 weldless eye nut, or Fig. 278 welded eye rod and anchors of sufficient strength to hold the desired load.

Ordering: Specify rod size, figure number, name and finish.

Note: Sizes 3/8" through 1" are supplied with bolt and nut. Larger sizes are supplied with pin and cotters.

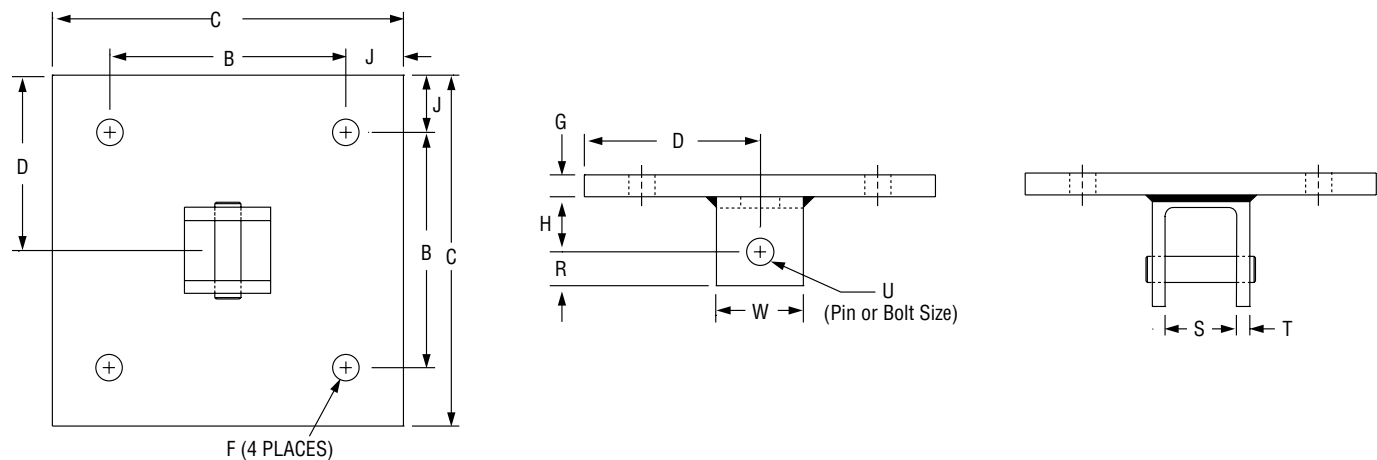


FIG. 49: DIMENSIONS (IN) • LOAD (LBS) • WEIGHT (LBS)														
Rod Size A	Max Load ■	Weight	J	B	C	D	F	G	H	R	S	T	U	W
3⁄8	730	11.8	1	8	10	5	9⁄₁₆	3⁄8	2	7⁄8	1¼	¼	1⁄₂	2
1⁄₂	1,350	11.9											5⁄₈	
5⁄₈	2,160	15.7											¾	
¾	3,230	16.9					1¹⁄₁₆	½	3	1¹⁄₈	1⁷⁄₈	¾	7⁄₈	2½
7⁄₈	4,480	18.1								1¼	2		1	
1	5,900	36.9	2	10	12	6	13⁄₁₆	¾	3	1½	2½	½	1¹⁄₈	3
1¼	9,500	40.9					15⁄₁₆			2		5⁄₈	1³⁄₈	4
1½	13,800	59.8					1¹⁄₈	1	4	2½	3	¾	1⁵⁄₈	5
1¾	18,600	93.6					1³⁄₈	1¼	5	2¾	3½	½	1⁷⁄₈	

■ Based on the rod diameter only. Rating is subject to the conditions that the concrete and anchors used are of sufficient strength to hold the load.

PROJECT INFORMATION		APPROVAL STAMP
Project:		<input type="checkbox"/> Approved
Address:		<input type="checkbox"/> Approved as noted
Contractor:		<input type="checkbox"/> Not approved
Engineer:		Remarks:
Submittal Date:		
Notes 1:		
Notes 2:		