

Fig. 192

Adjustable Pipe Saddle

Size Range: 2" through 12"
Material: Carbon steel
Finish: ☐ Plain or ☐ Zinc Plated (Hot-Dip Galvanized optional)
Service: Stanchion type support for **stationary** pipe where vertical adjustment is required.
Approvals: Complies with Federal Specification A-A-1192A (Type 38), ANSI/MSS SP-69 and MSS SP-58 (Type 38).
Ordering: Specify pipe size to be supported, figure number, name and finish.

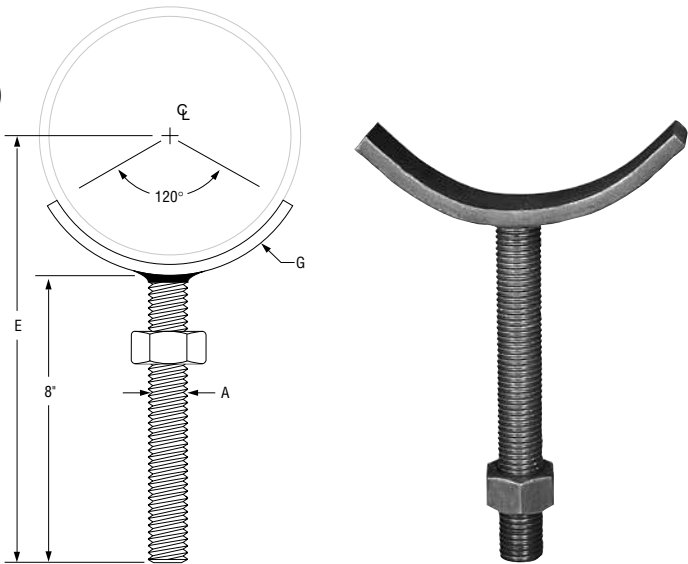


FIG. 192: DIMENSIONS (IN) • WEIGHTS (LBS)				
Pipe Size	Rod Size A	E	G	Weight
2	5/8	9 7/16	1/4 x 1	1.0
2 1/2		9 11/16		1.4
3		10		1.6
3 1/2		10 1/4		2.6
4	7/8	10 1/2	1/4 x 1 1/4	3.0
5		11		3.2
6	1	11 11/16	3/8 x 1 1/2	4.9
8		12 11/16		6.2
10	1 1/4	13 7/8	1/2 x 2	10.5
12		14 7/8		11.8

PROJECT INFORMATION		APPROVAL STAMP			
Project:		<input type="checkbox"/> Approved			
Address:		<input type="checkbox"/> Approved as noted			
Contractor:		<input type="checkbox"/> Not approved			
Engineer:		Remarks:			
Submittal Date:					
Notes 1:					
Notes 2:					