

Fig. 177

Adjustable Pipe Roll Support

Size Range: 1" through 30"

Material: Cast iron roll and sockets; steel roll rod, continuous thread rods and hex nuts

Finish: ☐ Plain, ☐ Zinc Plated (Hot-Dip Galvanized optional) or ☐ Resilient Coated

Service: For support of pipe where longitudinal movement due to expansion and contraction will occur and where vertical adjustment up to 6" may be necessary.

Maximum Temperature: 400° F at roller, 300° F at Resilient coated roller.

Approvals: Complies with Federal Specification A-A-1192A (Type 41), WW-H-171-E (Type 42), ANSI/MSS SP-69 and MSS SP-58 (Type 41).

Installation: Normally used directly above steel beams, brackets angles, etc.

Features: Advantages of pipe rollers with a protective resilient coated covering.

- Non conductive pipe rollers - prevent the passing of current from pipeline to structure.
- Corrosion resistant - for protection against severe weather conditions, moderate corrosive conditions such as marine atmospheres and weather resistant to ultra-violet radiation.
- Low coefficient of friction between pipe and resilient coated pipe roller.

How to size:

- (1) If roll is to support bare pipe, select the size directly from nominal pipe size (see below).
- (2) If used with pipe covering protection saddle, see Figure 160 to Figure 166A for size of pipe roll.
- (3) If roll is to support covered pipe, the O.D. of the covering should not be greater than the O.D. of the pipe for which the roll was designed.

Ordering: Specify size of roll, figure number and name. Be certain to order oversized rolls when insulation and protection saddles makes this necessary.

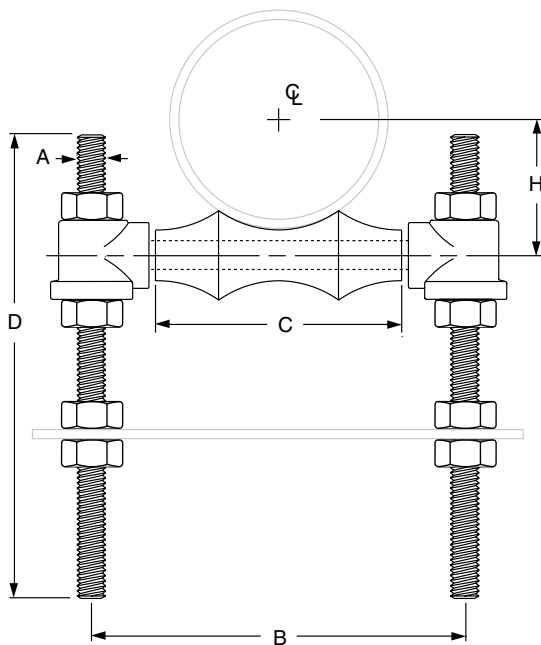
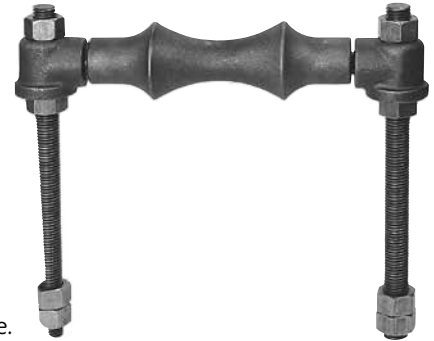


FIG. 177: DIMENSIONS (IN) • WEIGHT (LBS)

Pipe Size	Weight	A	B	C	D	H
1	1.1	3/8	3	1 1/2	12	1 1/16
1 1/4	1.2		3 3/8	1 7/8		1 1/4
1 1/2	1.2		3 5/8	2 1/8		1 3/8
2	1.3	1/2	4 1/8	2 5/8		1 5/8
2 1/2	2.3		4 7/8	3 1/8		1 15/16
3	2.4		5 1/2	3 3/4		2 1/4
3 1/2	2.7	5/8	6 1/8	4 1/4		2 9/16
4	3.8		6 7/8	4 3/4		2 13/16
5	4.7		8 1/16	5 13/16		3 1/16
6	7.6	3/4	9 9/16	6 7/8		4
8	11.0		11 15/16	8 7/8		5 1/8
10	13.7		14 1/16	11		6 3/8
12	19.4	7/8	15 13/16	12 1/2		7 7/16
14	31.2		17 3/4	14 1/4		8 3/8
16	42.5		19 3/4	16 1/4		9 7/16
18	46.6	1	21 7/8	18 1/4	18	10 1/2
20	66.2		24 1/4	20 1/4		11 5/8
24	102.5		28 7/8	24 1/4		14
30	186.8	1 1/2	35 1/2	30 1/4	24	17 7/16

DI/CI ROLL SIZING

DI/CI Pipe Size	Fig. 177 Roller Size
3	4
4	5
6	6
8	8
10	10
12	14
14	16
16	18
18	20
20	24
24	30
30	No Recom.

PROJECT INFORMATION

Project:	<input type="checkbox"/> Approved <input type="checkbox"/> Approved as noted <input type="checkbox"/> Not approved Remarks:
Address:	
Contractor:	
Engineer:	
Submittal Date:	
Notes 1:	
Notes 2:	

APPROVAL STAMP