

Fig. 104

Adjustable Swivel Ring, Split Ring Type

**Size Range:** 3/4" through 8"  
**Material:** Malleable iron, carbon steel  
**Finish:** ☐ Plain or ☐ Zinc Plated (Hot-Dip Galvanized optional)  
**Service:** Recommended for suspension of non-insulated **stationary** pipe lines.  
**Maximum Temperature:** 450° F  
**Approvals:** Complies with Federal Specification A-A-1192A (Type 6) WW-H-171-E (Type 6), ANSI/MSS SP-69 and MSS SP-58 (Type 16).

- Features:**
- Labor-saving features in installation completely outweigh slight additional cost.
  - Hanger may be installed prior to suspension of pipe.
  - Off-center hinge provides seating for pipe during installation.
  - Wedge-type locking pin is inseparably cast into hinged section, sizes 2 1/2" and larger.
  - Adjustable swivel ring is self-locking; prevents loosening due to vibration; maintains proper pitch of pipe.
  - Wire retaining ring prevents separation of swivel shank from pipe ring before installation.

**Ordering:** Specify pipe size, figure number, name and finish.

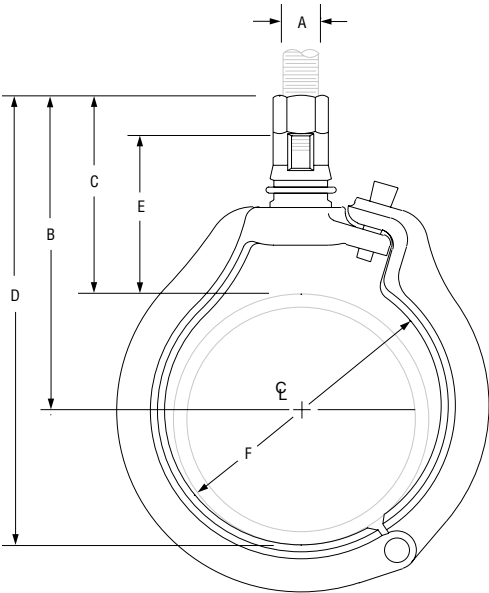


FIG. 104: DIMENSIONS (IN) • LOADS (LBS) • WEIGHT (LBS)								
Pipe Size	Max Load	Weight	Rod Size A	B	C	D	E	Inside Dia. of Ring – F
3/4	300	0.31	3/8	27/8	23/8	37/16	115/16	13/16
1		0.32			21/4	39/16	13/4	17/16
1 1/4		0.34		3	23/16	37/8	111/16	113/16
1 1/2		0.41		3 1/8		41/8		21/16
2		0.48		3 1/2	25/16	411/16	113/16	21/2
2 1/2	500	0.58	1/2	315/16	21/2	53/8	17/8	3
3		1.00		43/8	25/8	61/8	2	33/4
4		1.70		513/16	39/16	81/16	27/8	413/16
6		3.80		75/8	45/16	1015/16	31/2	71/16
8	1,800	6.10	7/8	91/8	47/8	131/2	37/8	91/16

PROJECT INFORMATION		APPROVAL STAMP	
Project:		<input type="checkbox"/> Approved	
Address:		<input type="checkbox"/> Approved as noted	
Contractor:		<input type="checkbox"/> Not approved	
Engineer:		Remarks:	
Submittal Date:			
Notes 1:			
Notes 2:			