

## Fig. 60 (Formerly Afcon Fig. 962)

### Steel Washer Plate

**Size Range:**  $\frac{3}{8}$ " through  $3\frac{3}{4}$ "

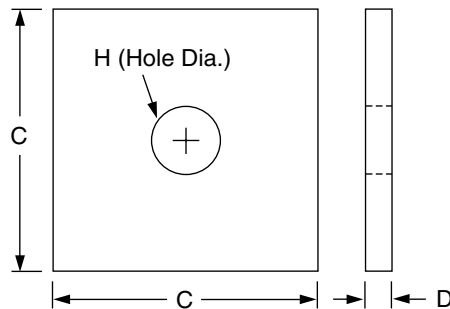
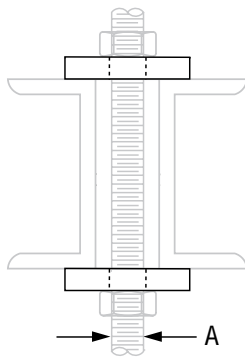
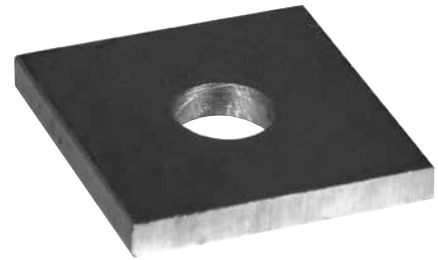
**Material:** Carbon steel

**Finish:** ☐ Plain or ☐ Hot-Dip Galvanized

**Service:** A heavy duty washer plate used on top of channels or angles for supporting pipe with rods or U-bolts.

**Maximum Temperature:** Plain 750° F, Galvanized 450° F

**Ordering:** Specify rod size, figure number, name and finish.



**FIG. 60: DIMENSIONS (IN) • WEIGHT (LBS)**

Rod Size A	Weight	Max Load		C x C x D Size of Stock	Hole Dia. H
		650° F	750° F		
$\frac{3}{8}$	0.6	730	572	3 x 3 x $\frac{1}{4}$	$\frac{1}{2}$
$\frac{1}{2}$	0.6	1,350	1,057		$\frac{5}{8}$
$\frac{5}{8}$	0.9	2,160	1,692	3 x 3 x $\frac{3}{8}$	$\frac{3}{4}$
$\frac{3}{4}$	1.6	3,230	2,530	4 x 4 x $\frac{3}{8}$	$\frac{7}{8}$
$\frac{7}{8}$	2.2	4,480	3,508	4 x 4 x $\frac{1}{2}$	1
1	2.1	5,900	4,620		$1\frac{1}{4}$
$1\frac{1}{4}$	3.3	9,500	7,440	5 x 5 x $\frac{1}{2}$	$1\frac{1}{2}$
$1\frac{1}{2}$	4.8	13,800	10,807	5 x 5 x $\frac{3}{4}$	$1\frac{3}{4}$
$1\frac{3}{4}$	4.7	18,600	14,566		2
2	4.5	24,600	19,265	6 x 6 x $\frac{3}{4}$	$2\frac{1}{4}$
$2\frac{1}{4}$	6.6	32,300	25,295		$2\frac{1}{2}$
$2\frac{1}{2}$	6.4	39,800	31,169		$2\frac{3}{4}$
$2\frac{3}{4}$	6.2	49,400	38,687		3
3	5.9	60,100	47,066		$3\frac{1}{4}$
$3\frac{1}{4}$	5.6	71,900	56,307	7 x 7 x $\frac{3}{4}$	$3\frac{1}{2}$
$3\frac{1}{2}$	8.1	84,700	66,331		$3\frac{3}{4}$
$3\frac{3}{4}$	7.8	98,500	77,139		4

#### PROJECT INFORMATION

#### APPROVAL STAMP

Project:	<input type="checkbox"/> Approved
Address:	<input type="checkbox"/> Approved as noted
Contractor:	<input type="checkbox"/> Not approved
Engineer:	Remarks:
Submittal Date:	
Notes 1:	
Notes 2:	