

## Fig. 590

### Adjustable Clevis for Ductile or Cast Iron Pipe

**Size Range:** 3" through 24" ductile or cast iron pipe

**Material:** Carbon steel

**Finish:** ☐ Plain or ☐ Hot-Dip Galvanized with Zinc Plated Bolts & Nuts

**Service:** Recommended for the suspension of **stationary** ductile iron or cast iron pipe.

**Maximum Temperature:** Plain 650° F, Galvanized 450° F

**Approvals:** Complies with Federal Specification A-A-1192A (Type 1)

WW-H-171-E (Type 1), ANSI/MSS SP-69 and MSS SP-58 (Type 1).

**Installation:** Hanger rod nut above clevis must be tightened securely to assure proper hanger performance.

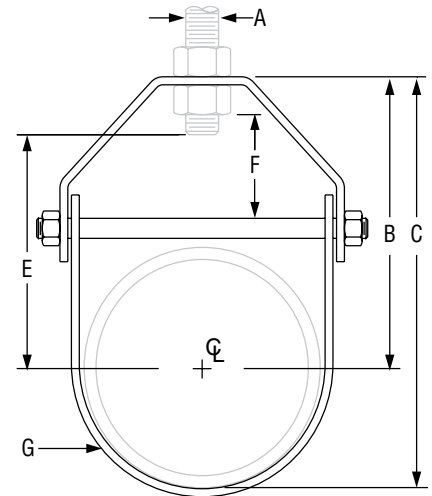
**Adjustment:** Vertical adjustment without removing pipe may be made from 1 <sup>15</sup>/<sub>16</sub>" through 3 <sup>3</sup>/<sub>16</sub>", varying with the size of the clevis. Tighten upper nut after adjustment.

**Ordering:** Specify pipe size, figure number, name and finish.

**Note:** Figure 590 sizes 12" and below typically feature a Figure 260 Top Component.



FIG. 590: DIMENSIONS (IN) • LOADS (LBS) • WEIGHT (LBS)									
D.I./C.I. Pipe Size	Max Load	Weight	D.I./C.I. Pipe O.D.	Rod Size A	B	C	E	F	G Width Lower
3	1,350	1.10	3.96	1/2	5 1/16	7 1/16	4 3/16	1 13/16	1 1/4
4	1,430	1.64	4.80	5/8	5 3/4	8 3/16	4 3/4	1 15/16	1 1/2
6	1,940	4.26	6.90	3/4	7 1/8	10 9/16	5 15/16	2 1/4	1 3/4
8	2,000	6.70	9.05	7/8	8 5/8	13 3/16	7 1/2	2 5/16	2
10	3,600	9.73	11.10	1	10 1/8	15 11/16	8 3/4	2 7/8	2 1/2
12	3,800	13.64	13.20	1 1/4	12 1/16	18 11/16	10 11/16	3 13/16	3
14	4,200	16.04	15.30	1 1/2	13 1/4	20 7/8	11 5/16	3 1/2	
16	4,600	24.52	17.40	1 3/4	14 1/4	22 15/16	12 9/16	3 7/8	
18	4,800	27.45	19.50	2	16 7/8	26 5/8	15 3/16	4 1/8	
20	4,800	46.24	21.60	2 1/4	18 1/4	29 1/16	16 3/8	4 3/4	
24	4,800	57.10	25.80	3	20 5/16	33 1/4	18 3/8	5 1/4	



PROJECT INFORMATION		APPROVAL STAMP	
Project:		<input type="checkbox"/> Approved	
Address:		<input type="checkbox"/> Approved as noted	
Contractor:		<input type="checkbox"/> Not approved	
Engineer:		Remarks:	
Submittal Date:			
Notes 1:			
Notes 2:			