

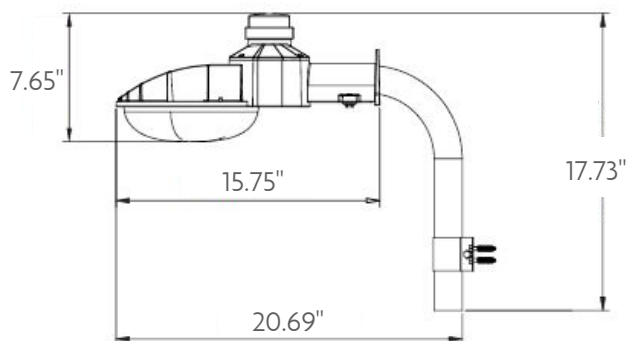


# LED Outdoor Lighting

## F-D2D-45WLED KIT

### Dusk-to-Dawn

- Die-Cast housing with UV resistant powder coat finish
- THD: <20%; Power Factor: >.9
- UL listed for wet locations
- Includes mounting pole and hardware
- 120-277V photocell included



Item #	F-D2D-45WLED KIT-80
Product Code	73461
UPC Code	751338001466
Input Power Watts	45
Input Current	520 mAmps
Volts	120-277V
Initial Lumens	5,000
Color Temp	5000K
CRI	>70
Average Rated Life	50,000 Hours (L70)
Operating Temperature	-25°C to 40°C
IES Type Distribution	VS
Equivalent Wattage	Up to 175W MH
Warranty	5 years

Specifications are subject to change without prior notice.



[www.topaz-usa.com](http://www.topaz-usa.com)

NY Office: 925 Waverly Ave • Holtsville, NY 11742 • 800-666-2852 • Fax: 631-758-8026

CA Office: 225 Parkside Drive, San Fernando, CA 91340 • 888-551-2852 or 818-838-3123 • Fax: 888-690-2852 or 818-838-3102

FL Office: 2020 West 26th Street, Jacksonville, FL 32209 • 800-338-2852 • Fax: 772-778-5386