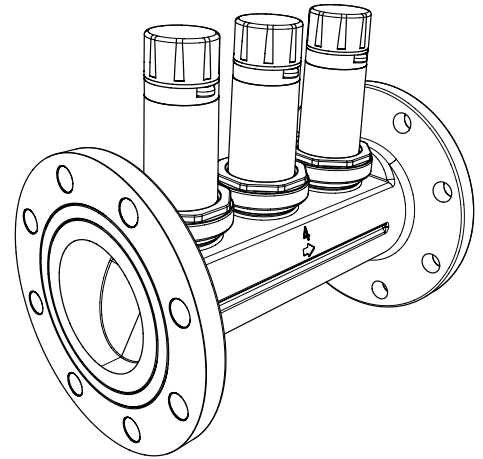


# SoloSet® Multi-Cartridge EB-25 Pressure Regulator

## DESCRIPTION

The Multi-Cartridge SoloSet® EB-25 from Cash Acme brings state-of-the-art water control technology to pressure regulators. The accurate flow control and pressure regulation of the Multi-Cartridge SoloSet® eliminates the need for costly two valve installations like the parallel and series reduction PRV configuration. The Multi-Cartridge design has a convenient orange pressure adjustment twist-cap and numerical indicator that allows for quick adjustment of water pressure. The state-of-the-art single piece cartridge design makes servicing the valve fast and easy.

The Multi-Cartridge SoloSet® is designed to service commercial and institutional (domestic) water installations that experience wide variation in water demand. Multi-Cartridge SoloSet® EB-25 is available in 2-½" to 4" sizes. The 2-½" and 3" valves are available with threaded and ASME B16.24 CL150 flanged inlet and outlet. The 4" valve is available with ASME B16.24 CL150 flanged inlet and outlet. The valves are factory set - Cartridge 1: 55 psi; Cartridge 2: 50 psi; and Cartridge 3: 45 psi.



# **SoloSet®**

## FEATURES AND BENEFITS

### Multi-Cartridge Design:

*Eliminates the need for costly two valve installations like the parallel and series reduction PRV configuration.*

Convenient orange twist-cap eliminates need for wrench adjustment, numerical indicator shows the pressure without the need for a gauge:

*Easy to adjust pressure set!*

Single piece cartridges can be removed with valve body remaining in place:

*You can service all the parts from one place, quicker and easier!*

Integral backpass check with the cartridge:

*Allows water to flow back through the regulator in case of thermal expansion caused by hot water heating devices.*

Cutting-edge design and production incorporates "micro-fingers" that dissipate noise due to water flow across the seat:

*Meets the latest stringent international standards, quieter installation.*

Every valve is tested for performance prior to shipping:

*Specify and install with confidence.*

Automatically reduces a high pressure to a lower delivery pressure:

*Excellent for installation with fluctuation in water pressure and wide variation of reduced pressures.*

Regulates pressure at various levels of water demand:

*Accurate flow control.*

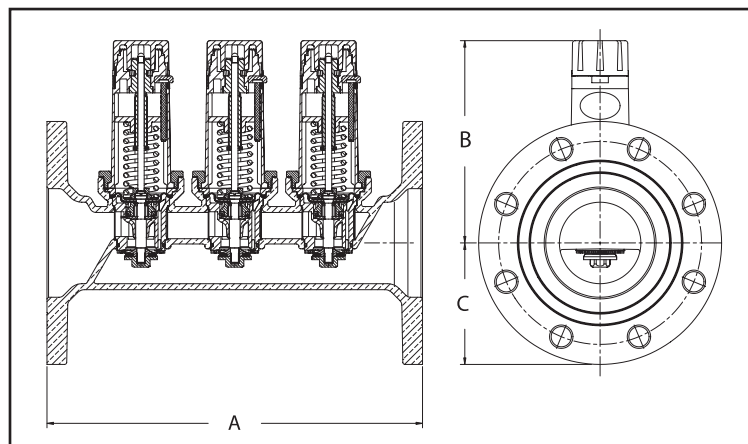
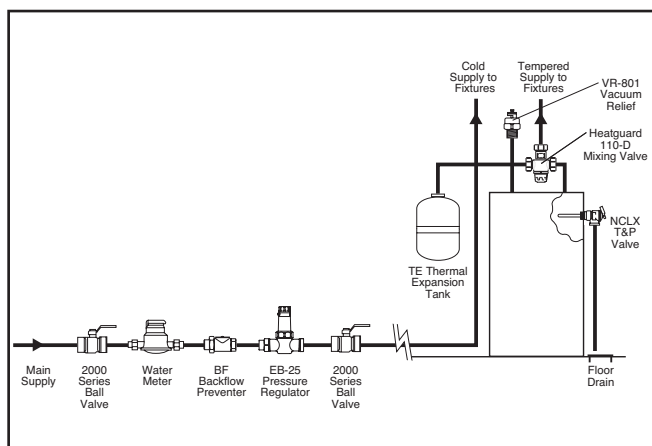
## SPECIFICATION

A pressure regulator valve shall be installed to reduce high supplies of incoming water pressure. The valve shall be three cartridges with a pre-set numerical indicator and micro-fingers for noise dissipation. The valve shall be a Cash Acme Multi-Cartridge SoloSet® EB-25 Pressure Regulator.

# SoloSet® Multi-Cartridge EB-25 Pressure Regulator

## TYPICAL INSTALLATION

The Cash Acme SoloSet® Multi-Cartridge EB-25 Pressure Regulator comes supplied with a pre-adjusted pressure set at the factory. Any adjustment to this pressure is easily accomplished by lifting the orange adjustment cap and twisting. The orange adjustment cap can be rotated counter clockwise to decrease pressure and clockwise to increase the pressure. The changes in pressure setting will be visible on the numeric indicator. All pressure adjustments can be made before or after the installation with great ease. Cash Acme is always pleased to assist with valve selection or installation requirements.



## SPECIFICATION DATA

### Performance:

Outlet pressure range . . . . . 20-90 psi

Maximum working pressure . . . 250 psi

Maximum temperature . . . . . 180°F

Service . . . . . Water

### Materials:

Body . . . . . Bronze

Spring Chamber . . . . . Nylon

Spring . . . . . Steel (zinc plated)

Pressure Plate . . . . . Steel (zinc plated)

Diaphragm . . . . . EPDM

Body Seat . . . . . Polysulphone

Seat Disc . . . . . EPDM

Piston . . . . . Stainless/brass

Strainer Screen . . . . . Stainless steel

## CONNECTIONS

Threaded (FIP) . . . . . 2-1/2" and 3"

ANSI CL 150 Flanged . . . . . 2-1/2" and 3" and 4"

Dimensions	A	B	C
2-1/2" FIP	13.37"	7.50"	2.19"
2-1/2" Flanged	12.97"	7.50"	3.50"
3" FIP	15.37"	7.50"	2.56"
3" Flanged	13.08"	7.50"	3.75"
4" Flanged	13.88"	7.50"	4.50"

Water Capacity (gpm)					
Size	P <sub>2</sub> Variation (PSI)	Differential Pressure (P <sub>1</sub> -P <sub>2</sub> ) PSI			
		10	20	50	100+
2-1/2"	5	3.0	5.0	7.5	16.6
	10	30.2	36.6	49.8	57.2
	15	83.6	89.7	107.0	135.0
	20	140.5	168.1	191.8	225.4
3"	5	4.1	6.5	12.6	22.7
	10	39.7	45.4	57.7	68.7
	15	95.2	111.3	129.1	146.8
	20	147.0	175.9	207.0	236.8
4"	5	6.0	9.5	20.6	33.9
	10	56.1	62.1	75.7	92.2
	15	114.8	142.2	162.0	170.9
	20	153.4	183.7	222.2	248.2