

BRACKETING SYSTEM

525-WLB series

Strong Arm with
Shower WallNut Lock Block™

Item # Submitted	_____
Job Name	_____
Location	_____
Engineer	_____
Contractor	_____
PO#	_____ TAG _____

SPECIFICATION

Sioux Chief 525 series Strong Arm with Shower WallNut Lock Block pre-assembled bracketing system shall be used where necessary for securing CTS water supply stub outs when penetrating a wall. Bracket shall be corrosion resistant with twisted ends to mount to the surface either a wood or metal stud wall. System shall include approved hardware for fastening brackets to stud wall. System shall include slideable, plastic block device to position and secure shower riser at any desired location. Each block shall include four screws for tightening. When screws on blocks are tightened, compression of blocks prevents lateral movement on brackets and simultaneously compresses on tube to prevent stub out movement. System shall be approved for use with copper tube.



525-16WLB

MATERIALS

brackets: 16 gauge galvanized steel

blocks: ABS

screw: #6 × 1" coarse thread, zinc-plated

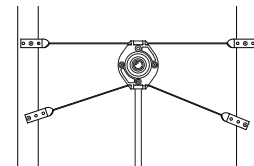
SAFE WORKING LOAD*

25 lbs. at 140°F

*safe working load = ½ failure

INSTALLATION

Determine stub out height. Secure top bracket to face of stud bay at desired position for shower arm stub out. Slide Lock Block across bracket. Insert copper shower riser ell into Lock Block. Install screws into all four screw holes and tighten. Block will compress around copper and on brackets to prevent lateral movement. As close as possible to each side of block, bend the bottom bracket downward. Bending the bottom bracket provides the most rigid installation. Secure ends of bottom bracket to studs. If desired, ends of top bracket may also be bent similar to bottom bracket for added strength.



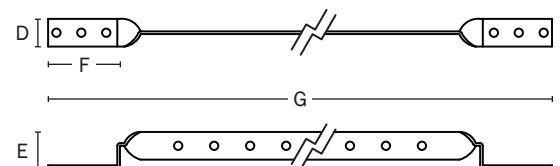
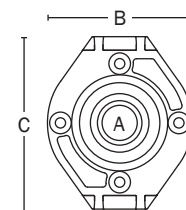
DIMENSIONS

Lock Block

A: Diameter	1/2"
B: Width	2 9/16"
C: Height	3"

Strong Arm

	16" stud bay	24" stud bay
D: Depth	5/8"	5/8"
E: Offset	1/2"	1/2"
F: Mounting tab	1 1/2"	1 1/2"
G: Overall length	17 1/4"	25 1/4"



Create Item Number

525-A WLB

e.g. 525-16WLB = 16" stud bay Strong Arm bracket with one Shower WallNut Lock Block

A LENGTH

- ☐ 16 16" stud bay
- ☐ 24 24" stud bay