

Fig. 157

Extension piece

**Size Range:** 3/8" through 7/8"

**Material:** Malleable iron

**Finish:** ☐ Plain or ☐ Galvanized

**Maximum Temperature:** 450° F

**Service:** For attaching hanger rod to various types of building attachments.

**Approvals:** UL Listed (3/8" - 7/8" rod size) and FM Approved (3/8" & 1/2" rod size).

**Installation:** May be used to form an integral part of malleable iron beam clamps Fig. 218, see page 64.

**Ordering:** Specify rod size, figure number, name and finish.

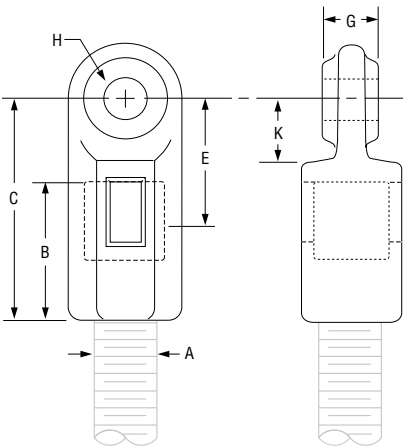


FIG. 157: LOADS (LBS) • WEIGHTS (LBS) • DIMENSIONS (IN)								
Rod Size A	Max Load	Weight	B	C	Rod Take-Out E	G	H	K
3⁄8	730	0.20	1¼	2¹⁄₁₆	1¼	½	½	9⁄₁₆
½	1,350	0.40	1⅜	2⁵⁄₁₆	1⅜	⅝		1¹⁄₁₆
⅝	1,550	0.44	1½	2⁷⁄₁₆	1⁷⁄₁₆			¾
¾	2,100	0.65	1¾	2⁷⁄₈	1¹¹⁄₁₆			⅞
⅞	2,350	0.78	1⁷⁄₈	2	1¾	¾	9⁄₁₆	

PROJECT INFORMATION		APPROVAL STAMP	
Project:		<input type="checkbox"/> Approved	
Address:		<input type="checkbox"/> Approved as noted	
Contractor:		<input type="checkbox"/> Not approved	
Engineer:		Remarks:	
Submittal Date:			
Notes 1:			
Notes 2:			