

Fig. 202

Iron Side Beam Bracket

**Size Range:** 3/8" through 5/8"  
**Material:** Malleable iron  
**Finish:** ☐ Plain or ☐ Galvanized  
**Service:** Recommended for attachment to steel or wooden beams, etc.  
**Approvals:** Complies with Federal Specification A-A-1192A (Type 34) WW-H-171-E (Type 35), ANSI/MSS SP-69 and MSS SP-58 (Type 34). UL, ULC Listed and FM Approved (Sizes 3/8" for use on wooden and steel beams and 1/2" for use on steel beams).  
**Features:** An economical, practical and adjustable means of securing hangers to beams, etc.  
**Ordering:** Specify rod size, figure number, name and finish.

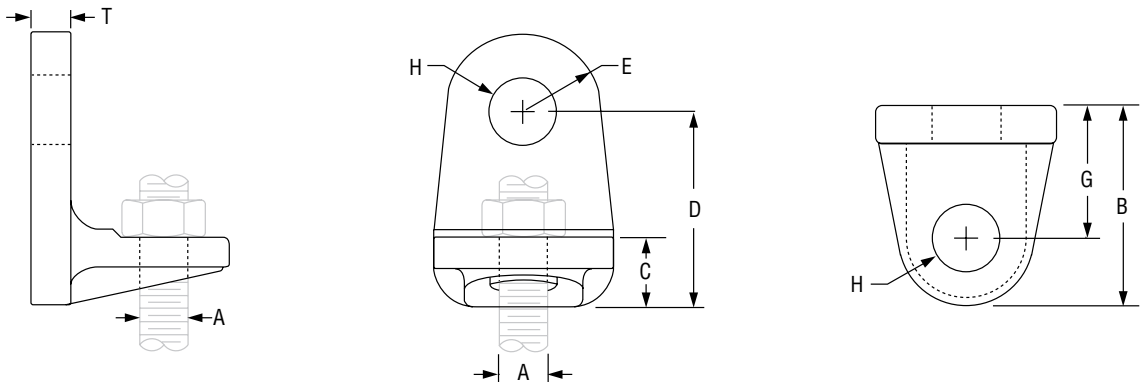


FIG. 202: LOAD (LBS) • WEIGHT (LBS) • DIMENSIONS (IN)										
Rod Size A	Max Load ■		Weight	B	C	D	E	Hole Dia. H	G	T
	With Lag Screw	With Bolt to Steel								
3/8	390	730	0.26	1 3/8	5/8	1 7/16	1 7/32	7/16	7/8	1/4
1/2	640	1,350	0.54	1 13/16	3/4	1 7/8	2 1/32	9/16	1 3/16	1 1/32
5/8	760	2,160	0.94	2 3/16	7/8	2 1/8	7/8	3/4	1 7/16	7/16

■ Maximum temperature of 450° F.

PROJECT INFORMATION		APPROVAL STAMP			
Project:		<input type="checkbox"/> Approved			
Address:		<input type="checkbox"/> Approved as noted			
Contractor:		<input type="checkbox"/> Not approved			
Engineer:		Remarks:			
Submittal Date:					
Notes 1:					
Notes 2:					