

## Fig. 60

### Steel Washer Plate

**Size Range:**  $\frac{3}{8}$ " to  $3\frac{3}{4}$ "

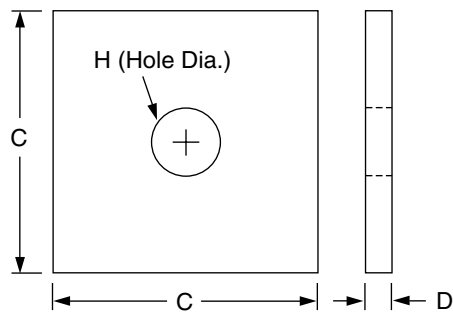
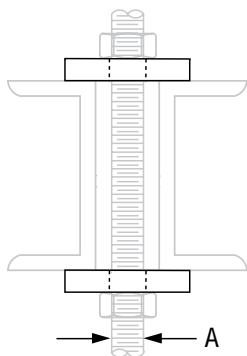
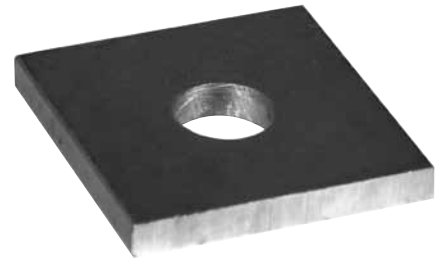
**Material:** Carbon steel

**Finish:** ☐ Plain or ☐ Galvanized

**Service:** A heavy duty washer plate used on top of channels or angles for supporting pipe with rods or U-bolts.

**Maximum Temperature:** Plain 750° F, Galvanized 450° F

**Ordering:** Specify rod size, figure number, name and finish.



**FIG. 60: WEIGHT (LBS) • DIMENSIONS (IN)**

Rod Size A	Weight	Max Load		C x C x D Size of Stock	Hole Dia. H
		650° F	750° F		
$\frac{3}{8}$	0.6	730	572	3 x 3 x $\frac{1}{4}$	$\frac{1}{2}$
$\frac{1}{2}$	0.6	1,350	1,057		$\frac{5}{8}$
$\frac{5}{8}$	0.9	2,160	1,692	3 x 3 x $\frac{3}{8}$	$\frac{3}{4}$
$\frac{3}{4}$	1.6	3,230	2,530	4 x 4 x $\frac{3}{8}$	$\frac{7}{8}$
$\frac{7}{8}$	2.2	4,480	3,508	4 x 4 x $\frac{1}{2}$	1
1	2.1	5,900	4,620		$1\frac{1}{4}$
$1\frac{1}{4}$	3.3	9,500	7,440	5 x 5 x $\frac{1}{2}$	$1\frac{1}{2}$
$1\frac{1}{2}$	4.8	13,800	10,807	5 x 5 x $\frac{3}{4}$	$1\frac{3}{4}$
$1\frac{3}{4}$	4.7	18,600	14,566		2
2	4.5	24,600	19,265		$2\frac{1}{4}$
$2\frac{1}{4}$	6.6	32,300	25,295	6 x 6 x $\frac{3}{4}$	$2\frac{1}{2}$
$2\frac{1}{2}$	6.4	39,800	31,169		$2\frac{3}{4}$
$2\frac{3}{4}$	6.2	49,400	38,687		3
3	5.9	60,100	47,066		$3\frac{1}{4}$
$3\frac{1}{4}$	5.6	71,900	56,307	7 x 7 x $\frac{3}{4}$	$3\frac{1}{2}$
$3\frac{1}{2}$	8.1	84,700	66,331		$3\frac{3}{4}$
$3\frac{3}{4}$	7.8	98,500	77,139		4

PROJECT INFORMATION		APPROVAL STAMP	
Project:		<input type="checkbox"/> Approved	
Address:		<input type="checkbox"/> Approved as noted	
Contractor:		<input type="checkbox"/> Not approved	
Engineer:		Remarks:	
Submittal Date:			
Notes 1:			
Notes 2:			